

KANSAS CORPORATION COMMISSION
OIL & GAS CONSERVATION DIVISION

TEMPORARY ABANDONMENT WELL APPLICATION

OPERATOR: License#
Name:
Address 1:
Address 2:
City: State: Zip:
Contact Person:
Phone:
Contact Person Email:
Field Contact Person:
Field Contact Person Phone:

API No. 15-
Spot Description:
Sec. Twp. S. R.
GPS Location: Lat, Long
Datum: NAD27, NAD83, WGS84
County: Elevation:
Lease Name: Well #:
Well Type: Oil, Gas, OG, WSW, Other
SWD Permit #: ENHR Permit #:
Gas Storage Permit #:
Spud Date: Date Shut-In:

Table with 7 columns: Conductor, Surface, Production, Intermediate, Liner, Tubing. Rows include Size, Setting Depth, Amount of Cement, Top of Cement, Bottom of Cement.

Casing Fluid Level from Surface: How Determined? Date:
Casing Squeeze(s): to w / sacks of cement, to w / sacks of cement. Date:
Do you have a valid Oil & Gas Lease? Yes No
Depth and Type: Junk in Hole at Tools in Hole at Casing Leaks: Yes No Depth of casing leak(s):
Type Completion: ALT. I ALT. II Depth of: DV Tool: w / sacks of cement Port Collar: w / sack of cement
Packer Type: Size: Inch Set at: Feet
Total Depth: Plug Back Depth: Plug Back Method:

Geological Date:

Table with 4 columns: Formation Name, Formation Top, Formation Base, Completion Information. Rows 1 and 2.

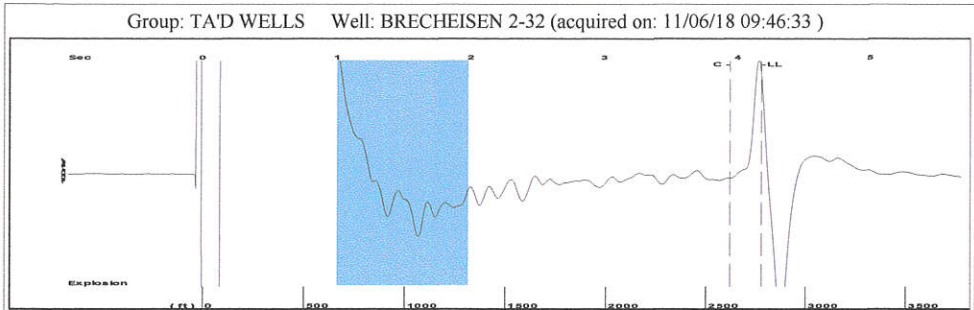
UNDER PENALTY OF PERJURY I HEREBY ATTEST THAT THE INFORMATION CONTAINED HEREIN IS TRUE AND CORRECT TO THE BEST OF MY KNOWLEDGE

Submitted Electronically

Do NOT Write in This Space - KCC USE ONLY
Date Tested: Results: Date Plugged: Date Repaired: Date Put Back in Service:
Review Completed by: Comments:
TA Approved: Yes Denied Date:

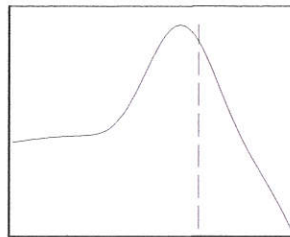
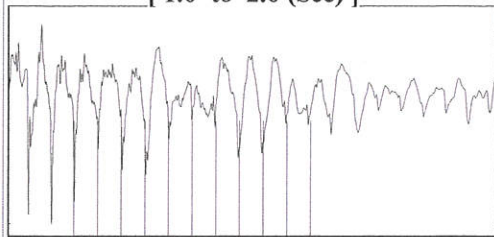
Mail to the Appropriate KCC Conservation Office:

Table with 3 columns: District Office #, Address, Phone. Rows 1-4.

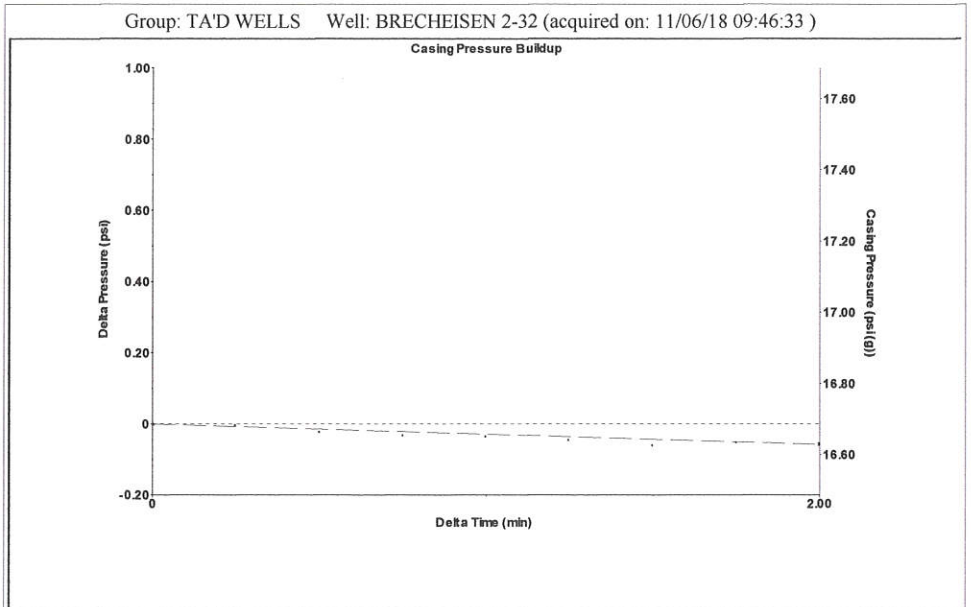


Filter Type High Pass Automatic Collar Count Yes Time 4.181 sec
 Manual Acoustic Velo 1309.92 ft/s Manual JTS/sec 20.6612 Joints 87.5843
 Depth 2776.42 ft

[1.0 to 2.0 (Sec)]

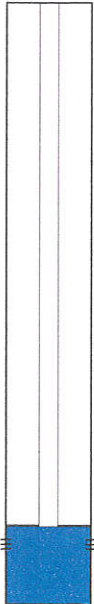


Analysis Method: Automatic



Change in Pressure -0.06 psi PT11249
 Change in Time 2.00 min Range 0 - ? psi

Group: TA'D WELLS Well: BRECHEISEN 2-32 (acquired on: 11/06/18 09:46:33)

Production	Potential	Casing Pressure		Producing
Oil - * -	- * - BBL/D	16.7 psi (g)		Annular Gas Flow 0 Mscf/D
Water - * -	- * - BBL/D	Casing Pressure Buildup -0.1 psi		% Liquid 100 %
Gas - * -	- * - Mscf/D	2.00 min		
IPR Method Vogel		Gas/Liquid Interface Pressure 18.7 psi (g)		
PBHP/SBHP - * -		Liquid Level Depth 2776.42 ft		
Production Efficiency 0.0		Pump Intake Depth 2786.00 ft		
Oil 40 deg.API		Formation Depth 2890.00 ft		
Water 1.05 Sp.Gr.H2O				
Gas 0.68 Sp.Gr.AIR				
Acoustic Velocity 1328.11 ft/s				
Formation Submergence				Pump Intake 22.0 psi (g)
Total Gaseous Liquid Column HT (TVD) 10 ft				Producing BHP 69.2 psi (g)
Equivalent Gas Free Liquid HT (TVD) 10 ft				Static BHP - * - psi (g)
Acoustic Test				

Group: TA'D WELLS Well: BRECHEISEN 2-32 (acquired on: 11/06/18 09:46:33)

Acoustic Velocity 1328.11 ft/s	Joints counted 76
Joints Per Second 20.9482 jts/sec	Joints to liquid level 87.5843
Depth to liquid level 2776.42 ft	Filter Width 18.6612 22.6612
Automatic Collar Count Yes	Time to 1st Collar 0.316 3.944

STATE OF KANSAS

CORPORATION COMMISSION
CONSERVATION DIVISION
DISTRICT No. 1
210 E. FRONTVIEW, SUITE A
DODGE CITY, KS 67801



PHONE: 620-682-7933
<http://kcc.ks.gov/>

GOVERNOR JEFF COLYER, M.D.

SHARI FEIST ALBRECHT, CHAIR | JAY SCOTT EMLER, COMMISSIONER | DWIGHT D. KEEN, COMMISSIONER

November 08, 2018

Katherine McClurkan
Merit Energy Company, LLC
13727 Noel Road, Suite 1200
Dallas, TX 75240

Re: Temporary Abandonment
API 15-189-21628-00-00
Breckeisen 2-32
SE/4 Sec.32-34S-38W
Stevens County, Kansas

Dear Katherine McClurkan:

"Your temporary abandonment (TA) application for the well listed above has been approved. In accordance with K.A.R. 82-3-111 the TA status of this well will expire 11/08/2019.

- * If you return this well to service or plug it, please notify the District Office.
- * If you sell this well you are required to file a Transfer of Operator form, T-1.
- * If the well will remain temporarily abandoned, you must submit a new TA application, CP-111, before 11/08/2019.

You may contact me at the number above if you have questions.

Very truly yours,

Michael Maier"