

KANSAS CORPORATION COMMISSION
OIL & GAS CONSERVATION DIVISION

TEMPORARY ABANDONMENT WELL APPLICATION

OPERATOR: License#
Name:
Address 1:
Address 2:
City: State: Zip:
Contact Person:
Phone:
Contact Person Email:
Field Contact Person:
Field Contact Person Phone:

API No. 15-
Spot Description:
Sec. Twp. S. R.
GPS Location: Lat: Long:
Datum: NAD27 NAD83 WGS84
County: Elevation:
Lease Name: Well #:
Well Type: Oil Gas OG WSW Other:
SWD Permit #: ENHR Permit #:
Gas Storage Permit #:
Spud Date: Date Shut-In:

Table with 7 columns: Conductor, Surface, Production, Intermediate, Liner, Tubing. Rows include Size, Setting Depth, Amount of Cement, Top of Cement, Bottom of Cement.

Casing Fluid Level from Surface: How Determined? Date:
Casing Squeeze(s): to w / sacks of cement, to w / sacks of cement. Date:
Do you have a valid Oil & Gas Lease? Yes No
Depth and Type: Junk in Hole at Tools in Hole at Casing Leaks: Yes No Depth of casing leak(s):
Type Completion: ALT. I ALT. II Depth of: DV Tool: w / sacks of cement Port Collar: w / sack of cement
Packer Type: Size: Inch Set at: Feet
Total Depth: Plug Back Depth: Plug Back Method:

Geological Data:

Table with 4 columns: Formation Name, Formation Top, Formation Base, Completion Information. Rows 1 and 2.

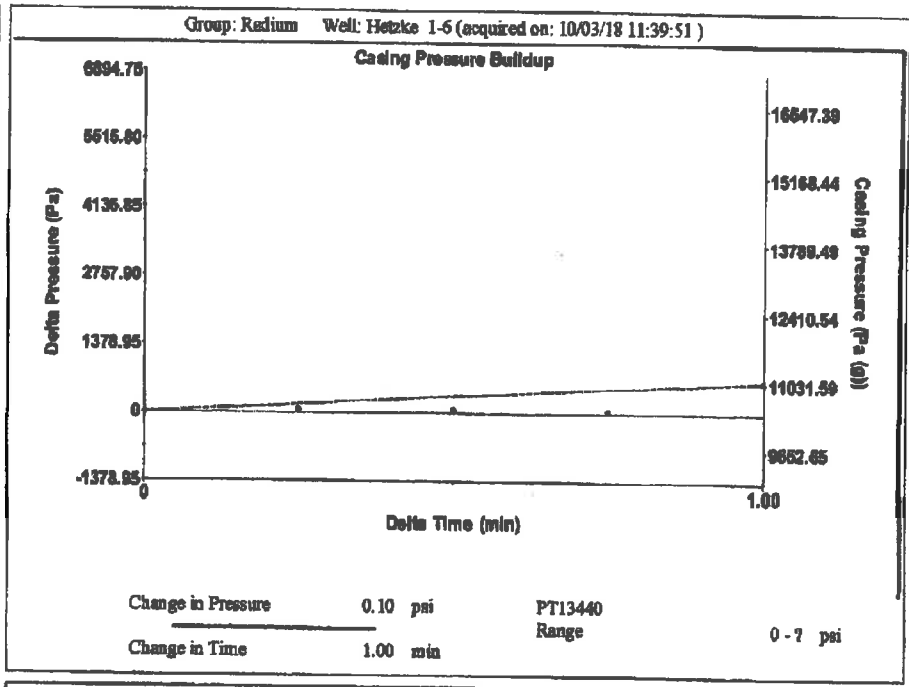
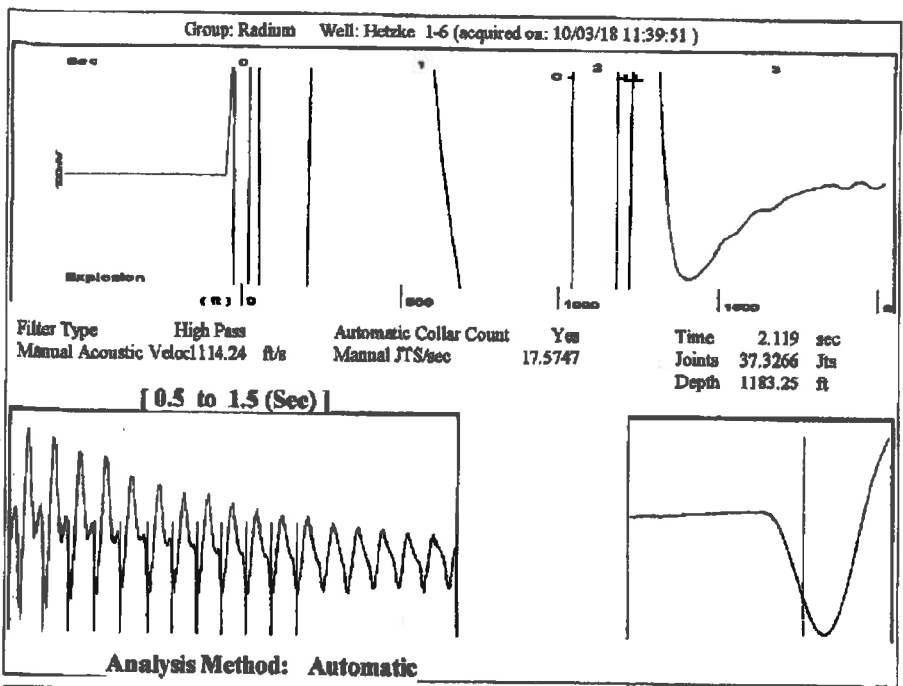
UNDER PENALTY OF PERJURY I HEREBY ATTEST THAT THE INFORMATION CONTAINED HEREIN IS TRUE AND CORRECT TO THE BEST OF MY KNOWLEDGE

Submitted Electronically

Do NOT Write in This Space - KCC USE ONLY
Date Tested: Results: Date Plugged: Date Repaired: Date Put Back in Service:
Review Completed by: Comments:
TA Approved: Yes Denied Date:

Mail to the Appropriate KCC Conservation Office:

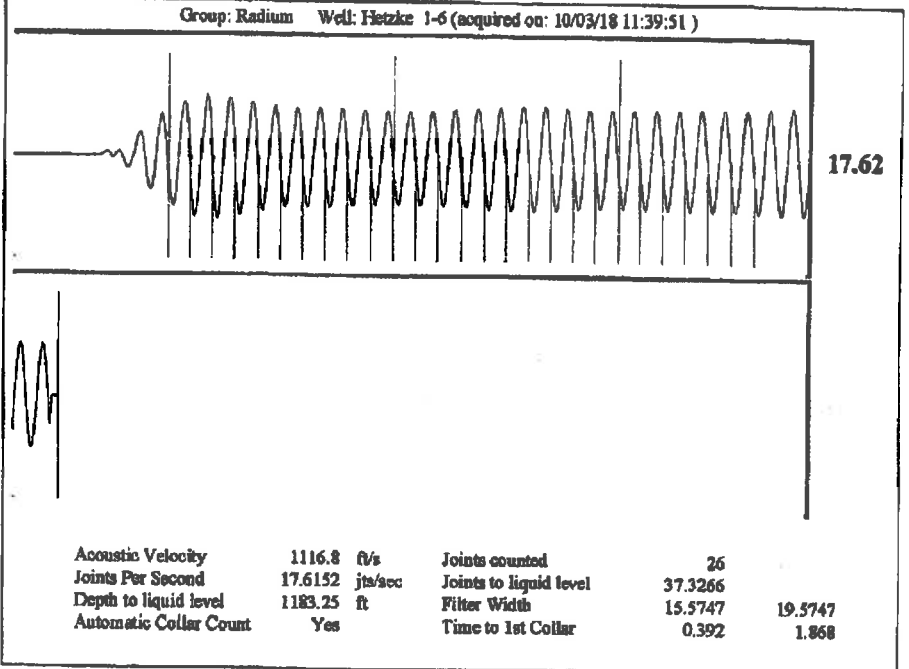
Table with 3 columns: District Office #, Address, Phone. Rows 1-4.



Group: Radium Well: Hetzke 1-6 (acquired on: 10/03/18 11:39:51)

|  |                  |   |                           |
|--|------------------|---|---------------------------|
| <b>Production</b>                            | <b>Potential</b> | <b>Casing Pressure</b>                      | <b>Producing</b>          |
| Oil -*-                                      | -*- BBL/D        | 10394.7 Pa (g)                              | Annular Gas Flow 0 Macf/D |
| Water -*-                                    | -*- BBL/D        | Casing Pressure Buildup 0.095 psi           | % Liquid 100 %            |
| Gas -*-                                      | -*- Macf/D       | 1.00 min                                    |                           |
| IPR Method Vogel                             |                  | Gas/Liquid Interface Pressure 5637.8 Pa (g) |                           |
| PBHP/SBHP -*-                                |                  | Liquid Level Depth 1183.25 ft               |                           |
| Production Efficiency 0.0                    |                  | Pump Intake Depth 3865.00 ft                |                           |
| Oil 40 deg.API                               |                  | Formation Depth 3696.00 ft                  |                           |
| Water 1.05 Sp.Gr.H2O                         |                  |   |                           |
| Gas 0.86 Sp.Gr.AIR                           |                  |   |                           |
| Acoustic Velocity 1116.8 ft/s                |                  |   |                           |
| Formation Submergence                        |                  |   |                           |
| Total Gaseous Liquid Column HT (TVD) 2682 ft |                  |   |                           |
| Equivalent Gas Free Liquid HT (TVD) 2682 ft  |                  |   |                           |
| Acoustic Test                                |                  |   |                           |

Pump Intake 6118977.3 Pa (g)  
 Producing BHP 5754917.6 Pa (g)  
 Static BHP -\*- Pa (g)



# STATE OF KANSAS

CORPORATION COMMISSION  
CONSERVATION DIVISION  
DISTRICT OFFICE No. 4  
2301 E. 13TH STREET  
HAYS, KS 67601-2651



PHONE: 785-261-6250  
FAX: 785-625-0564  
<http://kcc.ks.gov/>

GOVERNOR JEFF COLYER, M.D.

SHARI FEIST ALBRECHT, CHAIR | JAY SCOTT EMLER, COMMISSIONER | DWIGHT D. KEEN, COMMISSIONER

October 17, 2018

Loveness Mpanje  
F. G. Holl Company L.L.C.  
9431 E CENTRAL STE 100  
WICHITA, KS 67206-2563

Re: Temporary Abandonment  
API 15-009-25429-00-00  
HETZKE/DIRKS 1-6  
NW/4 Sec.06-20S-15W  
Barton County, Kansas

Dear Loveness Mpanje:

"Your temporary abandonment (TA) application for the well listed above has been approved. In accordance with K.A.R. 82-3-111 the TA status of this well will expire 10/17/2019.

- \* If you return this well to service or plug it, please notify the District Office.
- \* If you sell this well you are required to file a Transfer of Operator form, T-1.
- \* If the well will remain temporarily abandoned, you must submit a new TA application, CP-111, before 10/17/2019.

You may contact me at the number above if you have questions.

Very truly yours,

RICHARD WILLIAMS "