

KANSAS CORPORATION COMMISSION
OIL & GAS CONSERVATION DIVISION

TEMPORARY ABANDONMENT WELL APPLICATION

OPERATOR: License#
Name:
Address 1:
Address 2:
City: State: Zip:
Contact Person:
Phone:
Contact Person Email:
Field Contact Person:
Field Contact Person Phone:

API No. 15-
Spot Description:
Sec. Twp. S. R.
feet from N / S Line of Section
feet from E / W Line of Section
GPS Location: Lat: , Long:
Datum: NAD27 NAD83 WGS84
County: Elevation: GL KB
Lease Name: Well #:
Well Type: (check one) Oil Gas OG WSW Other:
SWD Permit #: ENHR Permit #:
Gas Storage Permit #:
Spud Date: Date Shut-In:

Table with 7 columns: Conductor, Surface, Production, Intermediate, Liner, Tubing. Rows include Size, Setting Depth, Amount of Cement, Top of Cement, Bottom of Cement.

Casing Fluid Level from Surface: How Determined? Date:
Casing Squeeze(s): to w / sacks of cement, to w / sacks of cement. Date:
Do you have a valid Oil & Gas Lease? Yes No
Depth and Type: Junk in Hole at Tools in Hole at Casing Leaks: Yes No Depth of casing leak(s):
Type Completion: ALT. I ALT. II Depth of: DV Tool: w / sacks of cement Port Collar: w / sack of cement
Packer Type: Size: Inch Set at: Feet
Total Depth: Plug Back Depth: Plug Back Method:

Geological Data:

Table with 4 columns: Formation Name, Formation Top, Formation Base, Completion Information. Rows 1 and 2.

UNDER PENALTY OF PERJURY I HEREBY ATTEST THAT THE INFORMATION CONTAINED HEREIN IS TRUE AND CORRECT TO THE BEST OF MY KNOWLEDGE

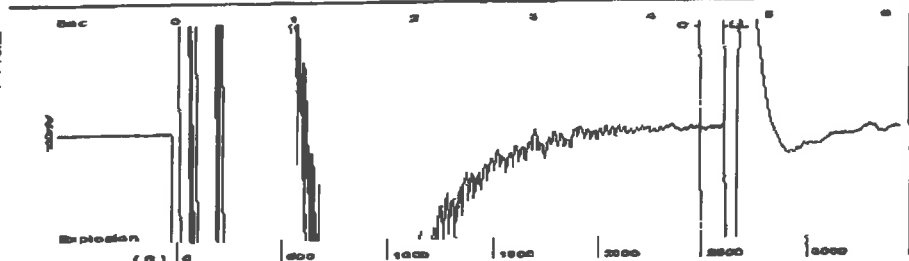
Submitted Electronically

Do NOT Write in This Space - KCC USE ONLY
Date Tested: Results: Date Plugged: Date Repaired: Date Put Back in Service:
Review Completed by: Comments:
TA Approved: Yes Denied Date:

Mail to the Appropriate KCC Conservation Office:

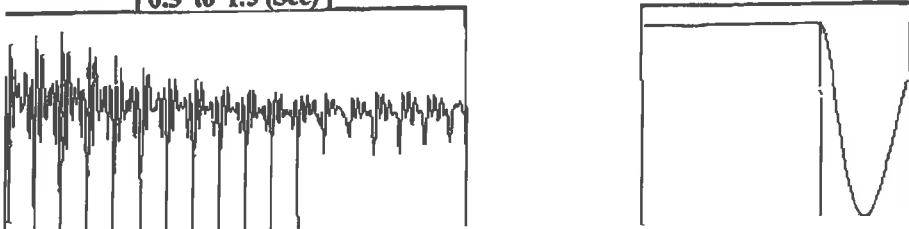
Table with 3 columns: District Office #, Address, Phone. Rows 1-4.

Group: Belpre Well: Hammeke 4-3 (acquired on: 10/23/18 15:13:29)



Filter Type High Pass Automatic Collar Count Yes Time 4.612 sec
 Manual Acoustic Velocity 1073.04 ft/s Manual JTS/sec 17.3913 Joints 84.5014 Jts
 Depth 2606.87 ft

[0.5 to 1.5 (Sec)]



Analysis Method: Automatic

Group: Belpre Well: Hammeke 4-3 (acquired on: 10/23/18 15:13:29)

Production
 Current Potential
 Oil -.- BBL/D
 Water -.- BBL/D
 Gas -.- Mcf/D

IPR Method Vogel
 PBHP/SBHP -.-
 Production Efficiency 0.0

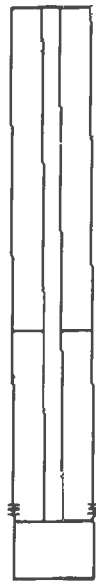
Oil 40 deg API
 Water 1.05 Sp.Gr.H2O
 Gas 0.85 Sp.Gr.AIR

Acoustic Velocity 1130.47 ft/s

Formation Submergence
 Total Gasless Liquid Column HT (TVD) 1836 ft
 Equivalent Gas Free Liquid HT (TVD) 1836 ft

Acoustic Test

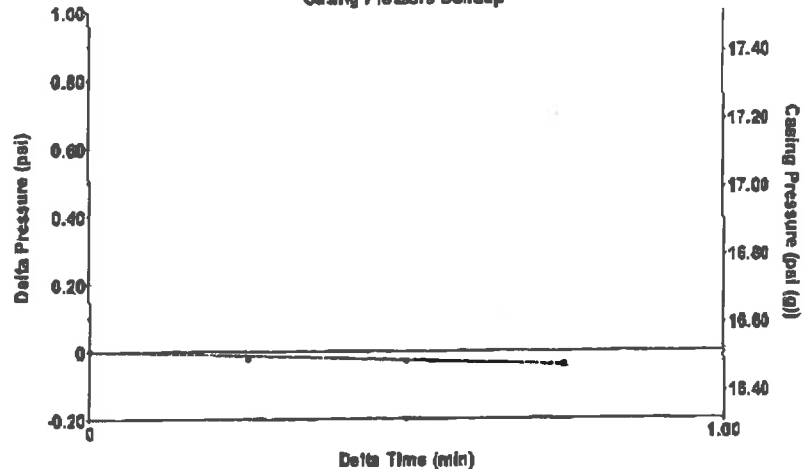
Casing Pressure 16.5 psi (g)
 Casing Pressure Buildup -0.040 psi
 Gas/Liquid Interface Pressure 19.0 psi (g)
 Liquid Level Depth 2606.87 ft
 Pump Intake Depth 4443.00 ft
 Formation Depth 4323.00 ft



Producing
 Annular Gas Flow 0 Mscf/D
 % Liquid 100 %
 Pump Intake 631.8 psi (g)
 Producing BHP 593.2 psi (g)
 Static BHP -.- psi (g)

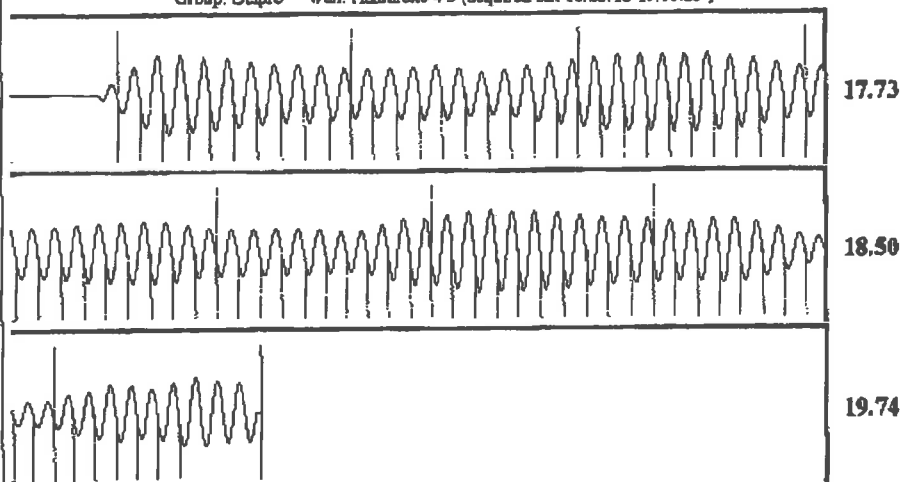
Group: Belpre Well: Hammeke 4-3 (acquired on: 10/23/18 15:13:29)

Casing Pressure Buildup



Change in Pressure -0.04 psi PT13440
 Change in Time 0.75 min Range 0 - ? psi

Group: Belpre Well: Hammeke 4-3 (acquired on: 10/23/18 15:13:29)



Acoustic Velocity 1130.47 ft/s Joints counted 76
 Joints Per Second 18.3221 jts/sec Joints to liquid level 84.5014
 Depth to liquid level 2606.87 ft Filter Width 15.3913 19.3913
 Automatic Collar Count Yes Time to 1st Collar 0.264 4.412

STATE OF KANSAS

CORPORATION COMMISSION
CONSERVATION DIVISION
DISTRICT No. 1
210 E. FRONTVIEW, SUITE A
DODGE CITY, KS 67801



PHONE: 620-682-7933
<http://kcc.ks.gov/>

GOVERNOR JEFF COLYER, M.D.

SHARI FEIST ALBRECHT, CHAIR | JAY SCOTT EMLER, COMMISSIONER | DWIGHT D. KEEN, COMMISSIONER

October 30, 2018

Loveness Mpanje
F. G. Holl Company L.L.C.
9431 E CENTRAL STE 100
WICHITA, KS 67206-2563

Re: Temporary Abandonment
API 15-047-21238-00-00
HAMMEKE 4-3
SW/4 Sec.03-24S-17W
Edwards County, Kansas

Dear Loveness Mpanje:

"Your temporary abandonment (TA) application for the well listed above has been approved. In accordance with K.A.R. 82-3-111 the TA status of this well will expire 10/30/2019.

- * If you return this well to service or plug it, please notify the District Office.
- * If you sell this well you are required to file a Transfer of Operator form, T-1.
- * If the well will remain temporarily abandoned, you must submit a new TA application, CP-111, before 10/30/2019.

You may contact me at the number above if you have questions.

Very truly yours,

Michael Maier"