



TRILOBITE TESTING, INC.

DRILL STEM TEST REPORT

Berexco, LLC
 2020 N. Bramblewood
 Wichita, KS 67206
 ATTN: Bryan Bynog

17/2s/37w Cheyenne KS
Ardene #2-17
 Job Ticket: 63709 **DST#: 2**
 Test Start: 2018.05.25 @ 21:50:00

GENERAL INFORMATION:

Formation: **LKC "A"**
 Deviated: No Whipstock: ft (KB)
 Time Tool Opened: 00:11:15
 Time Test Ended: 05:03:00
 Interval: **4160.00 ft (KB) To 4260.00 ft (KB) (TVD)**
 Total Depth: 4260.00 ft (KB) (TVD)
 Hole Diameter: 7.88 inches Hole Condition: Fair
 Test Type: Conventional Bottom Hole (Reset)
 Tester: James Winder
 Unit No: 83
 Reference Elevations: 3287.00 ft (KB)
 3279.00 ft (CF)
 KB to GR/CF: 8.00 ft

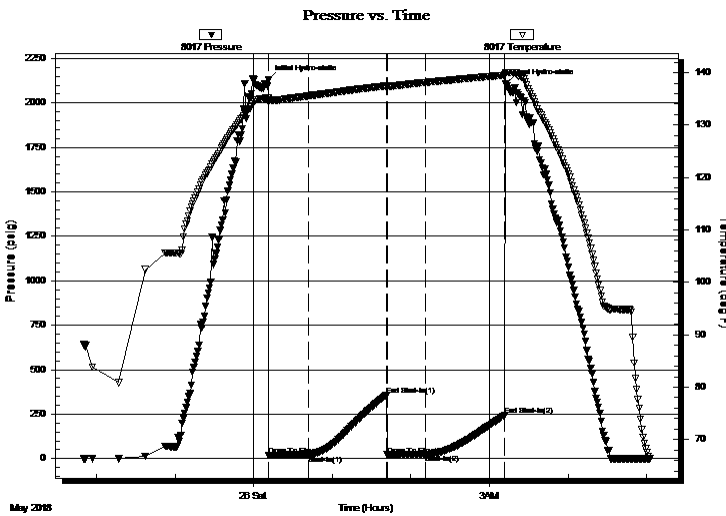
Serial #: 8017

Outside

Press@RunDepth: 22.46 psig @ 4161.00 ft (KB) Capacity: 8000.00 psig
 Start Date: 2018.05.25 End Date: 2018.05.26 Last Calib.: 2018.05.26
 Start Time: 21:50:05 End Time: 05:02:59 Time On Btm: 2018.05.26 @ 00:11:00
 Time Off Btm: 2018.05.26 @ 03:12:30

TEST COMMENT: 30 - IF: 1/4" Blow at open, died back, dead at 14 min.
 60 - IS: No blow
 30 - FF: No blow
 60 - FS: No blow

PRESSURE SUMMARY



Time (Min.)	Pressure (psig)	Temp (deg F)	Annotation
0	2128.46	135.15	Initial Hydro-static
1	18.29	134.53	Open To Flow (1)
31	20.57	135.56	Shut-In(1)
90	356.48	137.47	End Shut-In(1)
91	20.93	137.38	Open To Flow (2)
120	22.46	138.13	Shut-In(2)
181	242.50	139.51	End Shut-In(2)
182	2109.33	140.00	Final Hydro-static

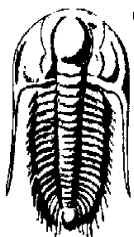
Recovery

Length (ft)	Description	Volume (bbl)
5.00	Mud w/oil spots 99%m, 1%o	0.02

* Recovery from multiple tests

Gas Rates

Choke (inches)	Pressure (psig)	Gas Rate (Mcf/d)



TRILOBITE TESTING, INC.

DRILL STEM TEST REPORT

Berexco, LLC
 2020 N. Bramblewood
 Wichita, KS 67206
 ATTN: Bryan Bynog

17/2s/37w Cheyenne KS

Ardene #2-17

Job Ticket: 63709

DST#: 2

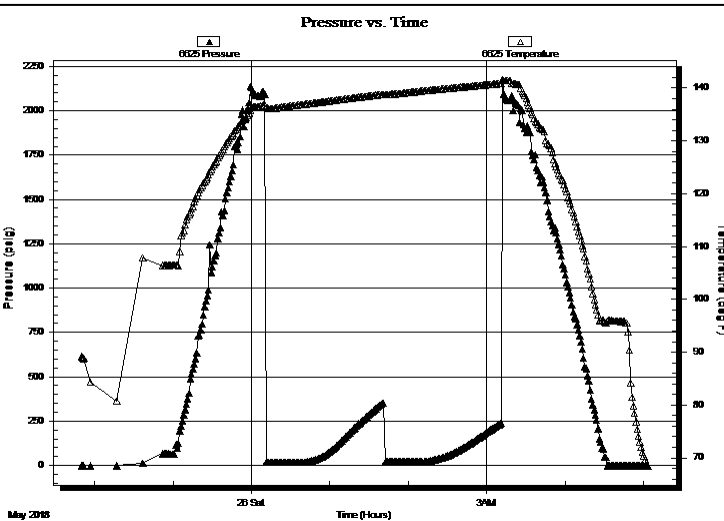
Test Start: 2018.05.25 @ 21:50:00

GENERAL INFORMATION:

Formation: **LKC "A"**
 Deviated: No Whipstock: ft (KB)
 Test Type: Conventional Bottom Hole (Reset)
 Time Tool Opened: 00:11:15
 Tester: James Winder
 Time Test Ended: 05:03:00
 Unit No: 83
 Interval: **4160.00 ft (KB) To 4260.00 ft (KB) (TVD)**
 Reference Elevations: 3287.00 ft (KB)
 Total Depth: 4260.00 ft (KB) (TVD)
 3279.00 ft (CF)
 Hole Diameter: 7.88 inches Hole Condition: Fair
 KB to GR/CF: 8.00 ft

Serial #: 6625 **Inside**
 Press@RunDepth: psig @ 4161.00 ft (KB) Capacity: 8000.00 psig
 Start Date: 2018.05.25 End Date: 2018.05.26 Last Calib.: 2018.05.26
 Start Time: 21:50:05 End Time: 05:03:29 Time On Btm:
 Time Off Btm:

TEST COMMENT: 30 - IF: 1/4" Blow at open, died back, dead at 14 min.
 60 - IS: No blow
 30 - FF: No blow
 60 - FS: No blow



PRESSURE SUMMARY

Time (Min.)	Pressure (psig)	Temp (deg F)	Annotation

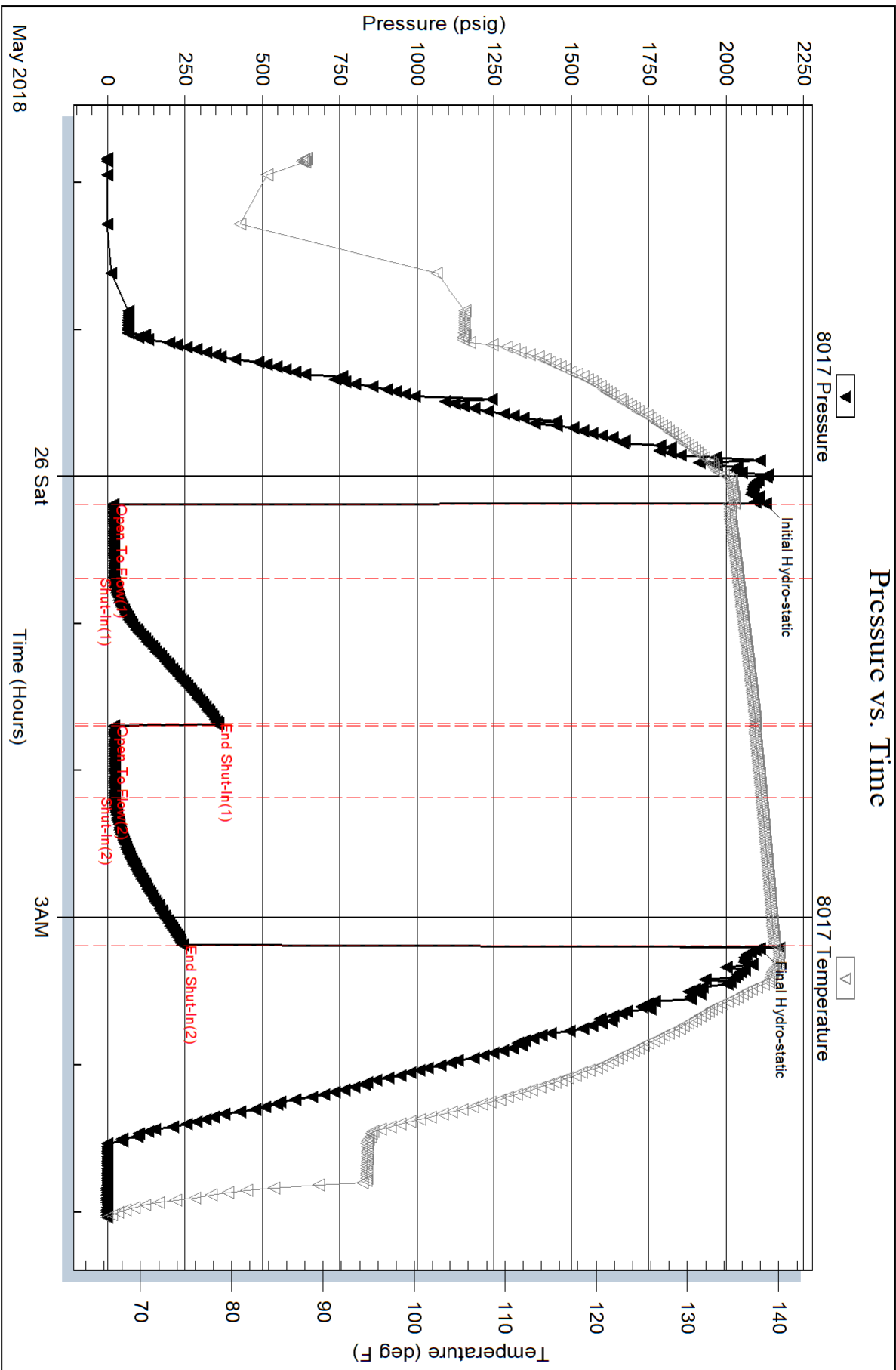
Recovery

Length (ft)	Description	Volume (bbl)
5.00	Mud w/oil spots 99%m, 1%o	0.02

Gas Rates

Choke (inches)	Pressure (psig)	Gas Rate (Mcf/d)

* Recovery from multiple tests



Serial #: 6625

Inside

Berexco, LLC

Ardene #2-17

DST Test Number: 2

