



**TRILOBITE  
TESTING, INC.**

# DRILL STEM TEST REPORT

Berexco, LLC

**17/2s/37w Cheyenne KS**

2020 N. Bramblewood  
Wichita, KS 67206

**Ardene #2-17**

Job Ticket: 63714

**DST#: 7**

ATTN: Bryan Bynog

Test Start: 2018.05.30 @ 15:55:00

## GENERAL INFORMATION:

Formation: **Pawnee**

Deviated: No Whipstock: ft (KB)

Time Tool Opened: 18:03:45

Time Test Ended: 23:20:45

Test Type: Conventional Bottom Hole (Reset)

Tester: James Winder

Unit No: 83

Interval: **4605.00 ft (KB) To 4643.00 ft (KB) (TVD)**

Reference Elevations: 3287.00 ft (KB)

Total Depth: 4643.00 ft (KB) (TVD)

3279.00 ft (CF)

Hole Diameter: 7.88 inches Hole Condition: Fair

KB to GR/CF: 8.00 ft

**Serial #: 8017 Outside**

Press@RunDepth: 21.46 psig @ 4606.00 ft (KB)

Capacity: 8000.00 psig

Start Date: 2018.05.30 End Date: 2018.05.30

Last Calib.: 2018.05.30

Start Time: 15:55:05 End Time: 23:20:44

Time On Btm: 2018.05.30 @ 18:03:15

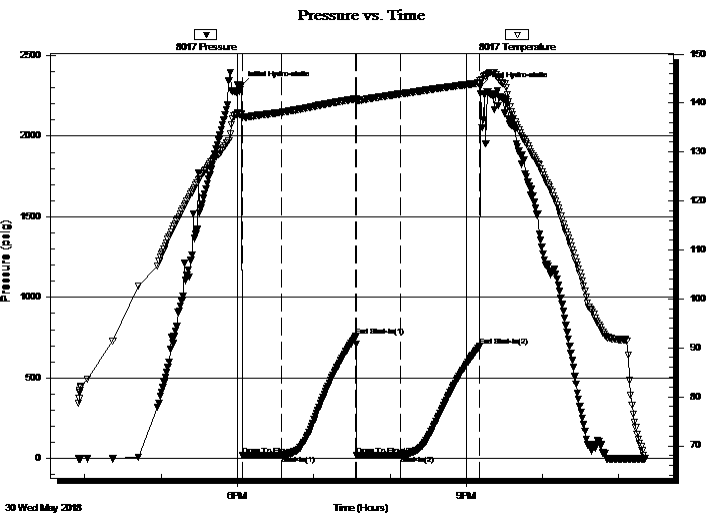
Time Off Btm: 2018.05.30 @ 21:10:45

TEST COMMENT: 30 - IF: 1/8" Blow at open, died back, dead at 11 min.

60 - IS: No blow

30 - FF: No blow

60 - FS: No blow



## PRESSURE SUMMARY

Time (Min.)	Pressure (psig)	Temp (deg F)	Annotation
0	2315.55	137.70	Initial Hydro-static
1	18.68	136.98	Open To Flow (1)
31	20.12	138.10	Shut-In(1)
90	756.87	140.85	End Shut-In(1)
91	20.54	140.56	Open To Flow (2)
125	21.46	141.85	Shut-In(2)
187	694.77	144.07	End Shut-In(2)
188	2306.72	144.53	Final Hydro-static

## Recovery

Length (ft)	Description	Volume (bbl)
5.00	Mud 100%	0.02

\* Recovery from multiple tests

## Gas Rates

Choke (inches)	Pressure (psig)	Gas Rate (Mcf/d)



**TRILOBITE TESTING, INC.**

**DRILL STEM TEST REPORT**

Berexco, LLC

**17/2s/37w Cheyenne KS**

2020 N. Bramblewood  
Wichita, KS 67206

**Ardene #2-17**

Job Ticket: 63714

**DST#: 7**

ATTN: Bryan Bynog

Test Start: 2018.05.30 @ 15:55:00

**GENERAL INFORMATION:**

Formation: **Pawnee**

Deviated: No Whipstock: ft (KB)

Time Tool Opened: 18:03:45

Time Test Ended: 23:20:45

Test Type: Conventional Bottom Hole (Reset)

Tester: James Winder

Unit No: 83

**Interval: 4605.00 ft (KB) To 4643.00 ft (KB) (TVD)**

Total Depth: 4643.00 ft (KB) (TVD)

Hole Diameter: 7.88 inches Hole Condition: Fair

Reference Elevations: 3287.00 ft (KB)

3279.00 ft (CF)

KB to GR/CF: 8.00 ft

**Serial #: 6625 Inside**

Press@RunDepth: psig @ 4606.00 ft (KB)

Start Date: 2018.05.30 End Date: 2018.05.30

Start Time: 15:55:05 End Time: 23:21:29

Capacity: 8000.00 psig

Last Calib.: 2018.05.30

Time On Btm:

Time Off Btm:

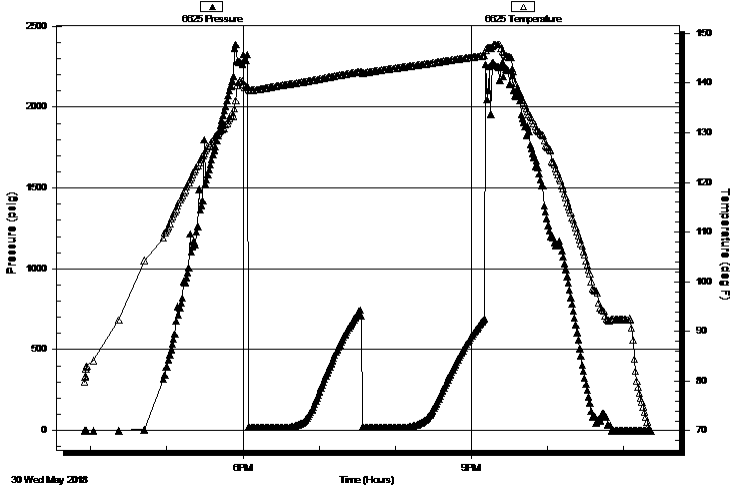
**TEST COMMENT:** 30 - IF: 1/8" Blow at open, died back, dead at 11 min.

60 - IS: No blow

30 - FF: No blow

60 - FS: No blow

**Pressure vs. Time**



**PRESSURE SUMMARY**

Time (Min.)	Pressure (psig)	Temp (deg F)	Annotation

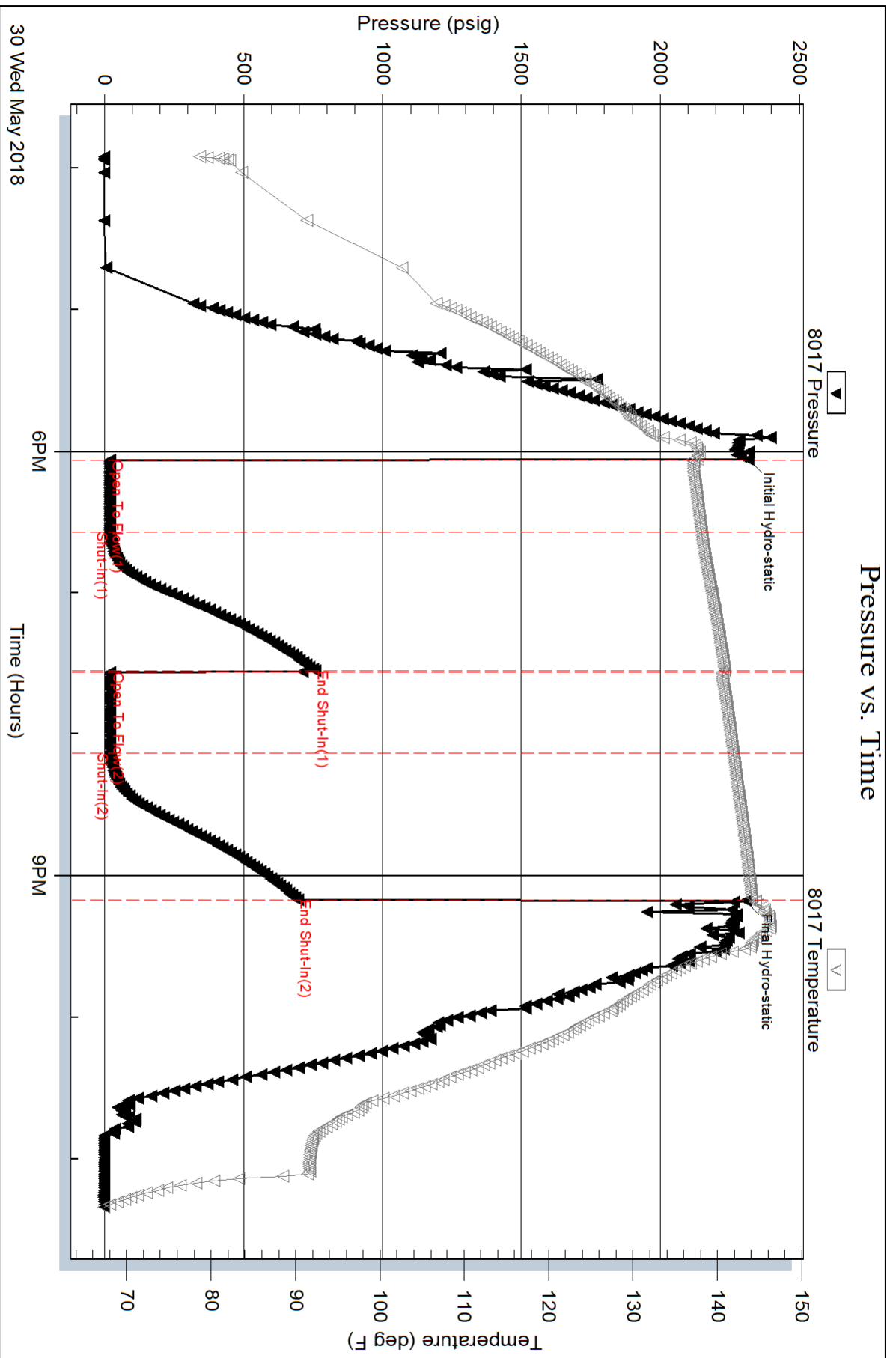
**Recovery**

Length (ft)	Description	Volume (bbl)
5.00	Mud 100%	0.02

**Gas Rates**

Choke (inches)	Pressure (psig)	Gas Rate (Mcf/d)

\* Recovery from multiple tests



Serial #: 6625

Inside

Berexco, LLC

Ardene #2-17

DST Test Number: 7

