



Fall & Associates
State and Elevation Service
P.O. Box 222
Pretty Prairie, KS. 67570
785-243-7506

Date 10-2-18

Invoice Number 0928181

MURFIN DRILLING

8

Nichol A

Operator

Number

Farm Name

Phillips-KS

33

5s

20w

2310'FSL 330'FWL

County-State

S

T

R

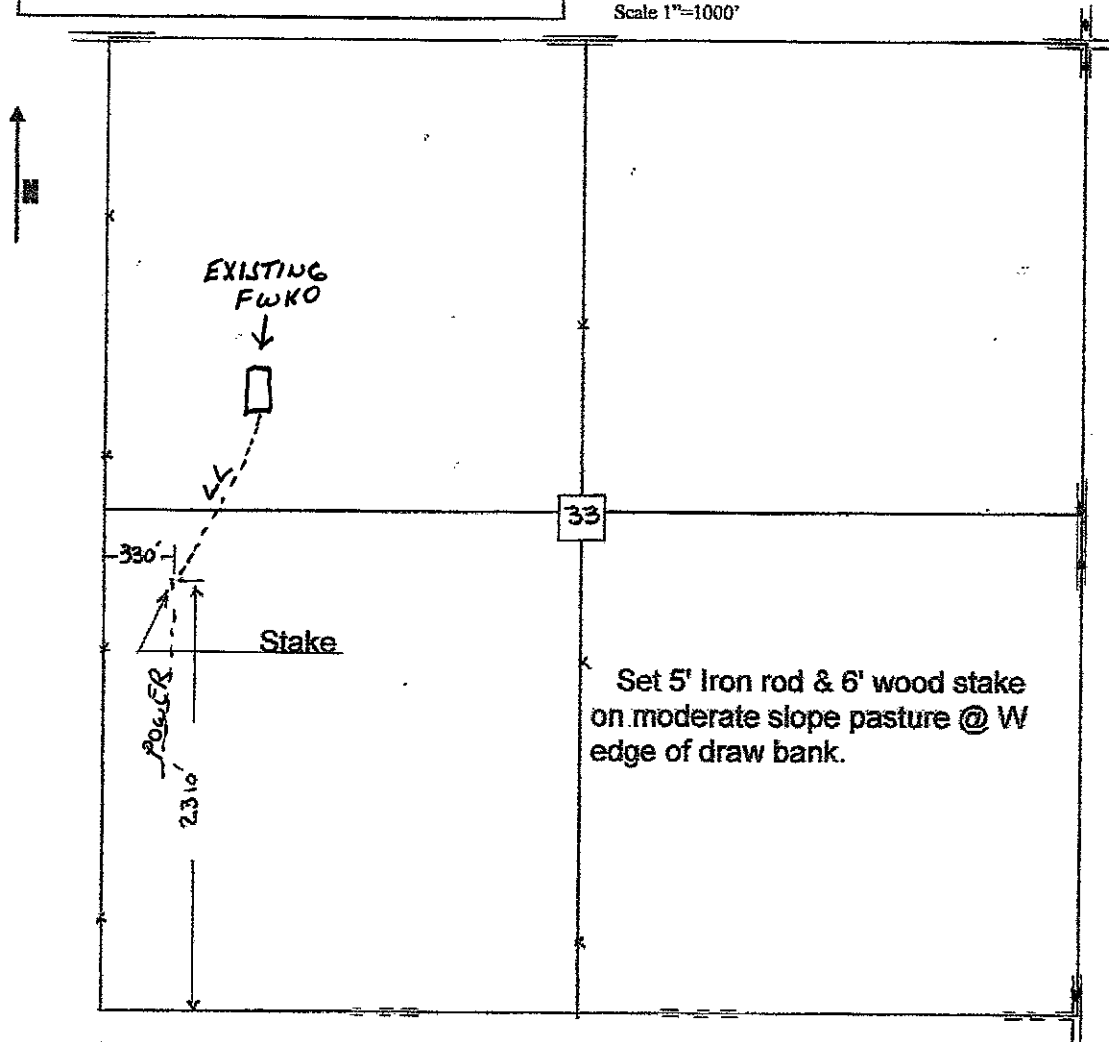
Location

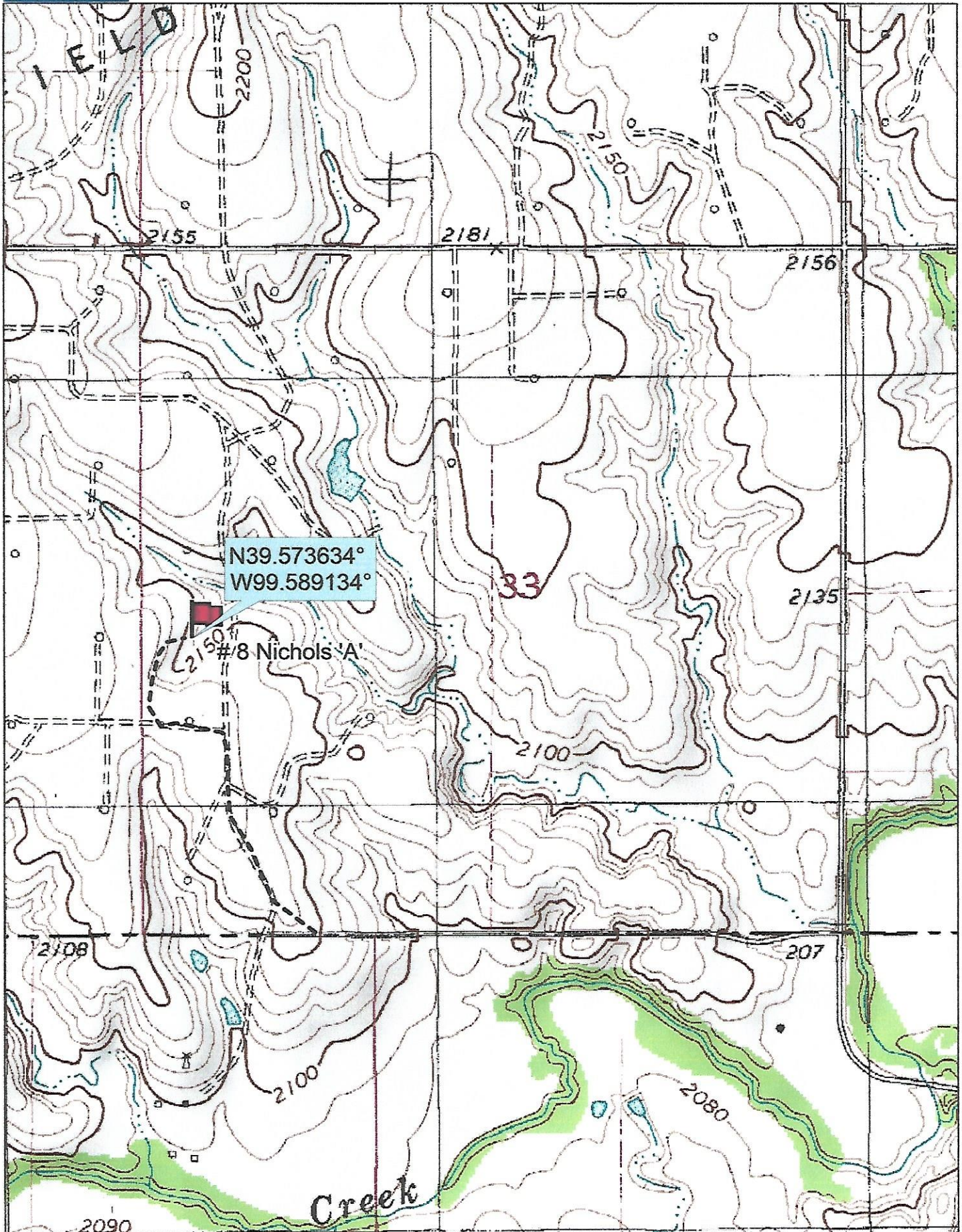
Murfin Drilling
250 N Water
Suite 300
Wichita, KS. 67202

Elevation 2146 Gr. Gr.

Ordered By: Shauna

Scale 1"=1000'





N39.573634°
W99.589134°

#8 Nichols 'A'

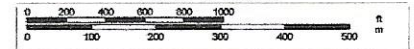
Data use subject to license.

© DeLorme. Topo North America™ 9.

www.delorme.com



Scale 1 : 12,000



1" = 1,000.0 ft

Data Zoom 13-1