



Fall & Associates

State and Elevation Service

P.O. Box 222

Pretty Prairie, KS. 67570

785-243-7506

Date 8-16-18

Invoice Number #0815181

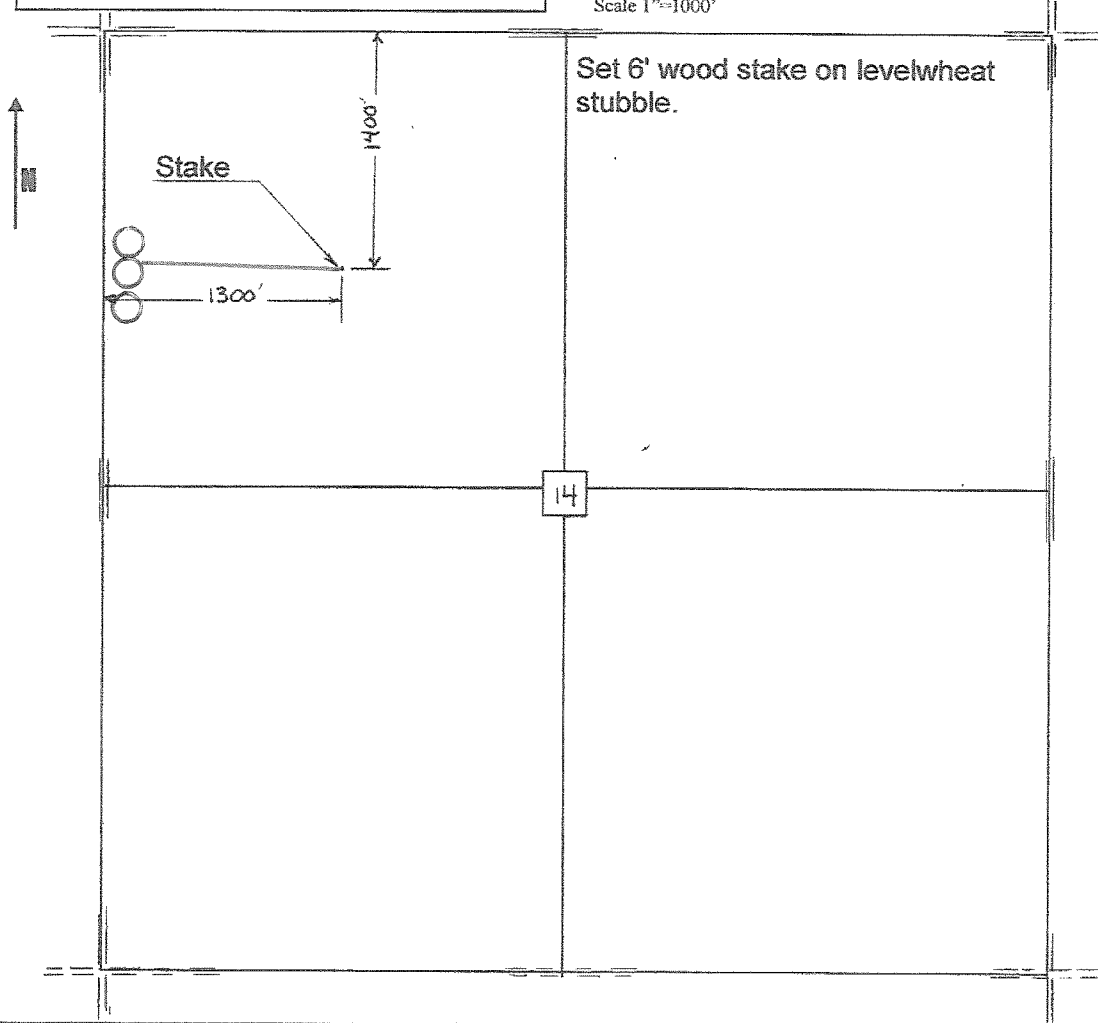
<u>MURFIN DRILLING</u>	<u>1-14</u>			<u>Banister</u>
Operator	Number			Farm Name
<u>Cheyenne-KS</u>	<u>14</u>	<u>2s</u>	<u>37w</u>	<u>1400'FNL 1300'FWL</u>
County-State	S	T	R	Location

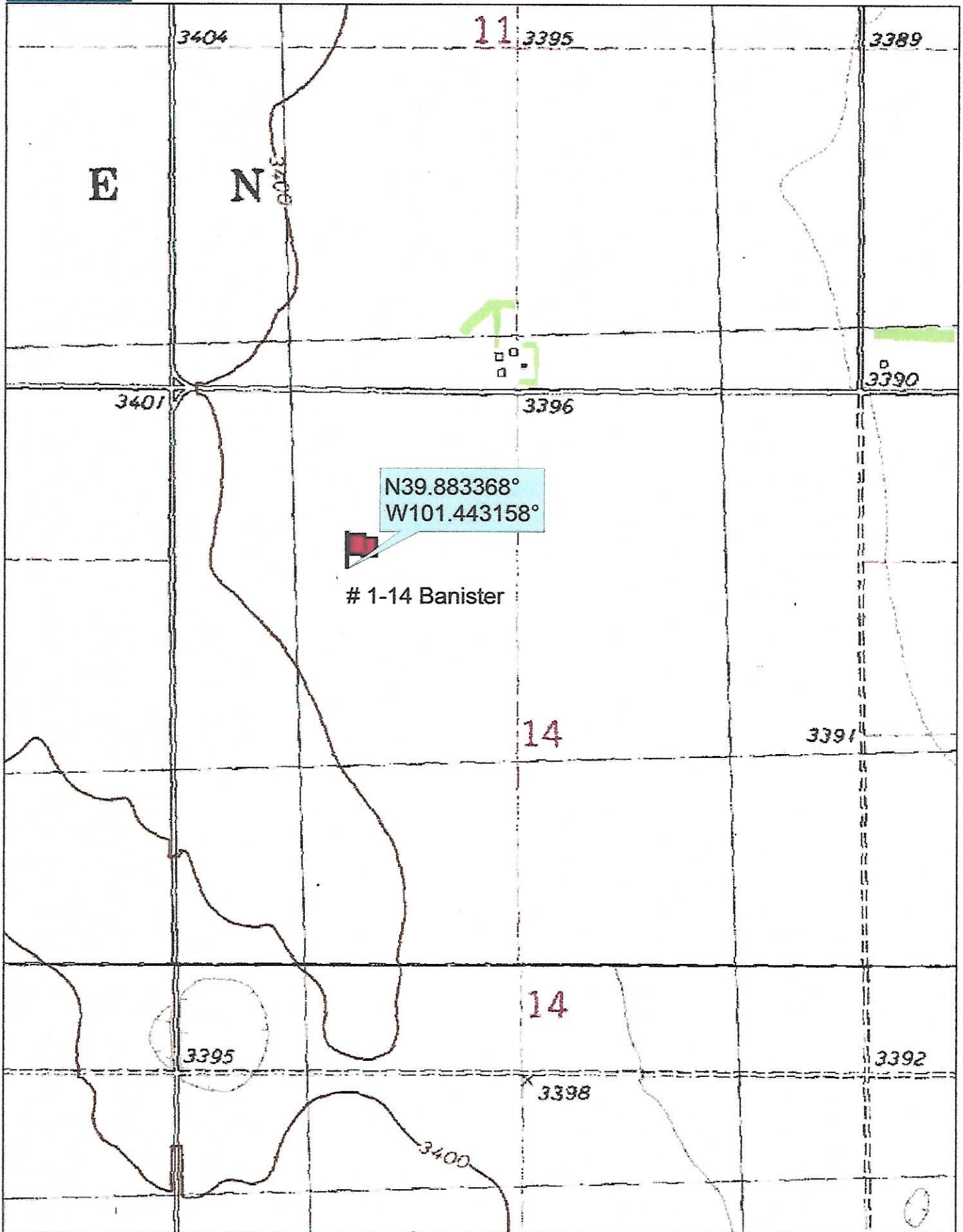
Murfin Drilling
 250 N. Water
 Suite 300
 Wichita, KS 67202

Elevation 3396 Gr.

Ordered By: Shauna

Scale 1"=1000'





Data use subject to license.

© DeLorme. Topo North America™ 9.

www.delorme.com

