

LITHOLOGY STRIP LOG

WellSight Systems

Scale 1:240 (5"=100') Imperial
Measured Depth Log

Well Name: States #1
 Well Id:
 Location: 1100' FSL & 1320' FWL Sec 10 T22S-R20W
 License Number:
 Spud Date: 6/13/2018
 Surface Coordinates:
 Region:
 Drilling Completed:
 Bottom Hole Coordinates:
 Ground Elevation (ft): 2167
 Logged Interval (ft): 2120 To: K.B. Elevation (ft): 2173
 Formation:
 Type of Drilling Fluid: Total Depth (ft):

Printed by WellSight Log Viewer from WellSight Systems 1-800-447-1534 www.WellSight.com

OPERATOR

Company: Bear Petroleum
 Address:

GEOLOGIST

Name: Rod Andersen
 Company: Kansas Petroleum Resources LLC
 Address:

ROCK TYPES

 Anhy	 Coal	 Lmst	 Shcol
 Bent	 Congl	 Meta	 Shgy
 Brec	 Dol	 Mrlst	 Sltst
 Cht	 Gyp	 Salt	 Ss
 Clyst	 Igne	 Shale	 Till

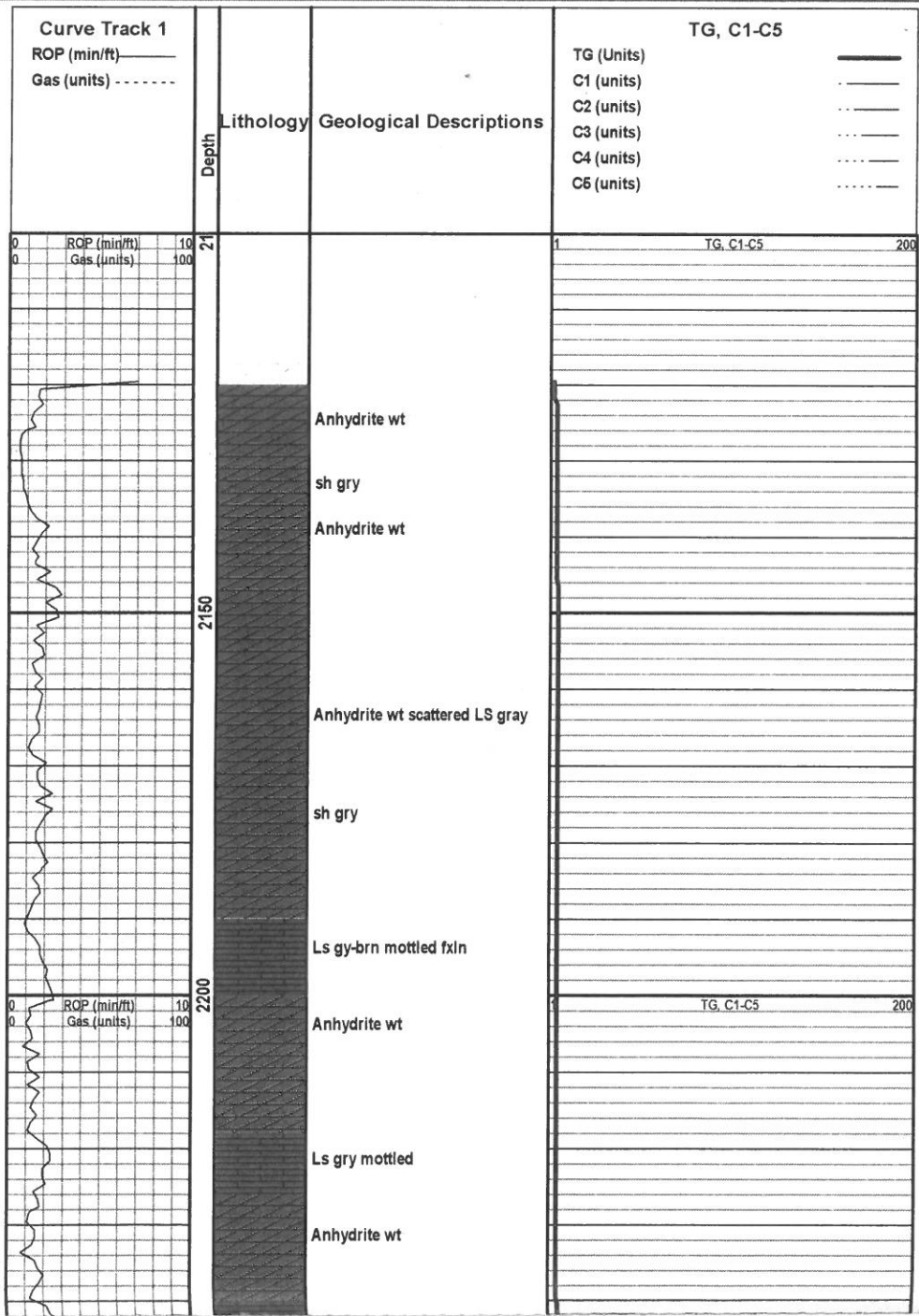
ACCESSORIES

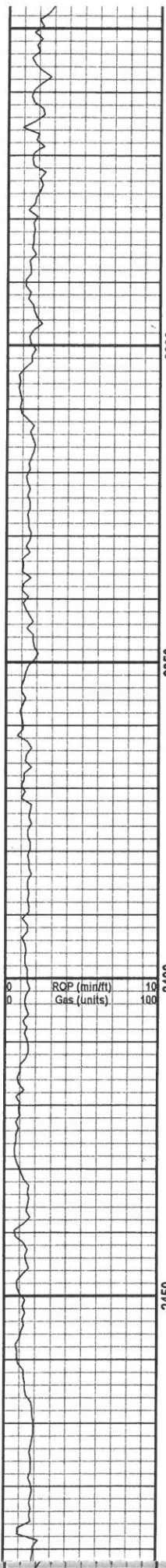
MINERAL	 Minxl	 Crin	 Gyp
 Anhy	 Nodule	 Echin	 Ls
 Arggrn	 Phos	 Fish	 Mrst
 Arg	 Pyr	 Foram	 Sltstrg
 Bent	 Salt	 Fossil	 Ssstrg
 Bit	 Sandy	 Gastro	
 Brecfrag	 Silt	 Oolite	TEXTURE
 Calc	 Sil	 Ostra	 Boundst
 Carb	 Sulphur	 Pelec	 Chalky
 Chtdk	 Tuff	 Pellet	 Cryxln

<ul style="list-style-type: none"> □ D01 □ Feldspar □ Ferrpel □ Ferr □ Glau □ Gyp □ Hvymin □ Kaol □ Marl 	<ul style="list-style-type: none"> □ Fossil □ Algae □ Amph □ Belm □ Bioclst □ Brach □ Bryozoa □ Cephal □ Coral 	<ul style="list-style-type: none"> □ Plant □ Strom 	<ul style="list-style-type: none"> □ Finexin □ Grainst □ Lithogr □ Microxln □ Mudst □ Packst □ Wackest
STRINGER			
<ul style="list-style-type: none"> ▬ Anhy ▬ Arg ▬ Bent ▬ Coal ▬ Dol 			

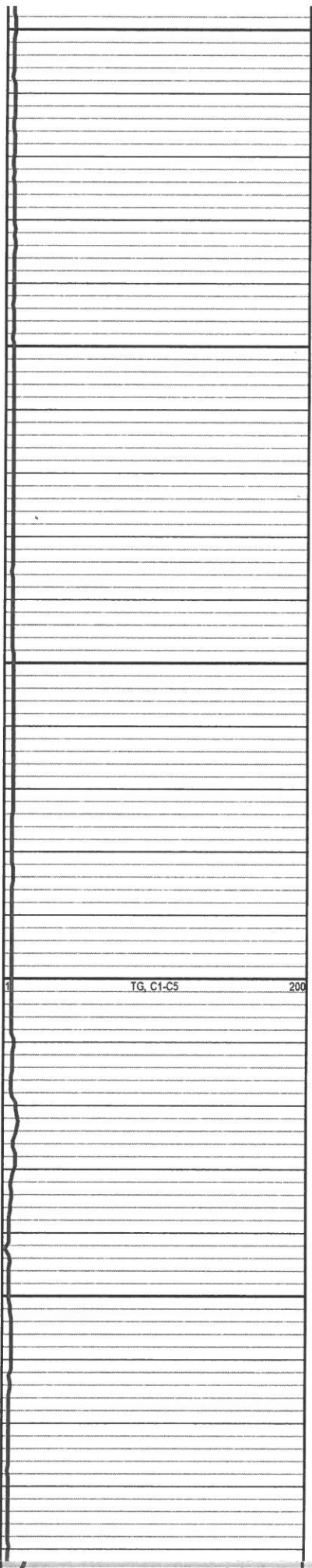
OTHER SYMBOLS

POROSITY <ul style="list-style-type: none"> □ Earthy □ Fenest □ Fracture □ Inter □ Moldic □ Organic □ Pinpoint □ Vuggy 	SORTING <ul style="list-style-type: none"> □ Well □ Moderate □ Poor 	<ul style="list-style-type: none"> □ Angular 	INTERVAL <ul style="list-style-type: none"> □ Core □ Dst
ROUNDING <ul style="list-style-type: none"> □ Rounded □ Subrnd □ Subang 	OIL SHOW <ul style="list-style-type: none"> □ Even □ Spotted □ Ques □ Dead 	EVENT <ul style="list-style-type: none"> □ Rft □ Sidewall 	

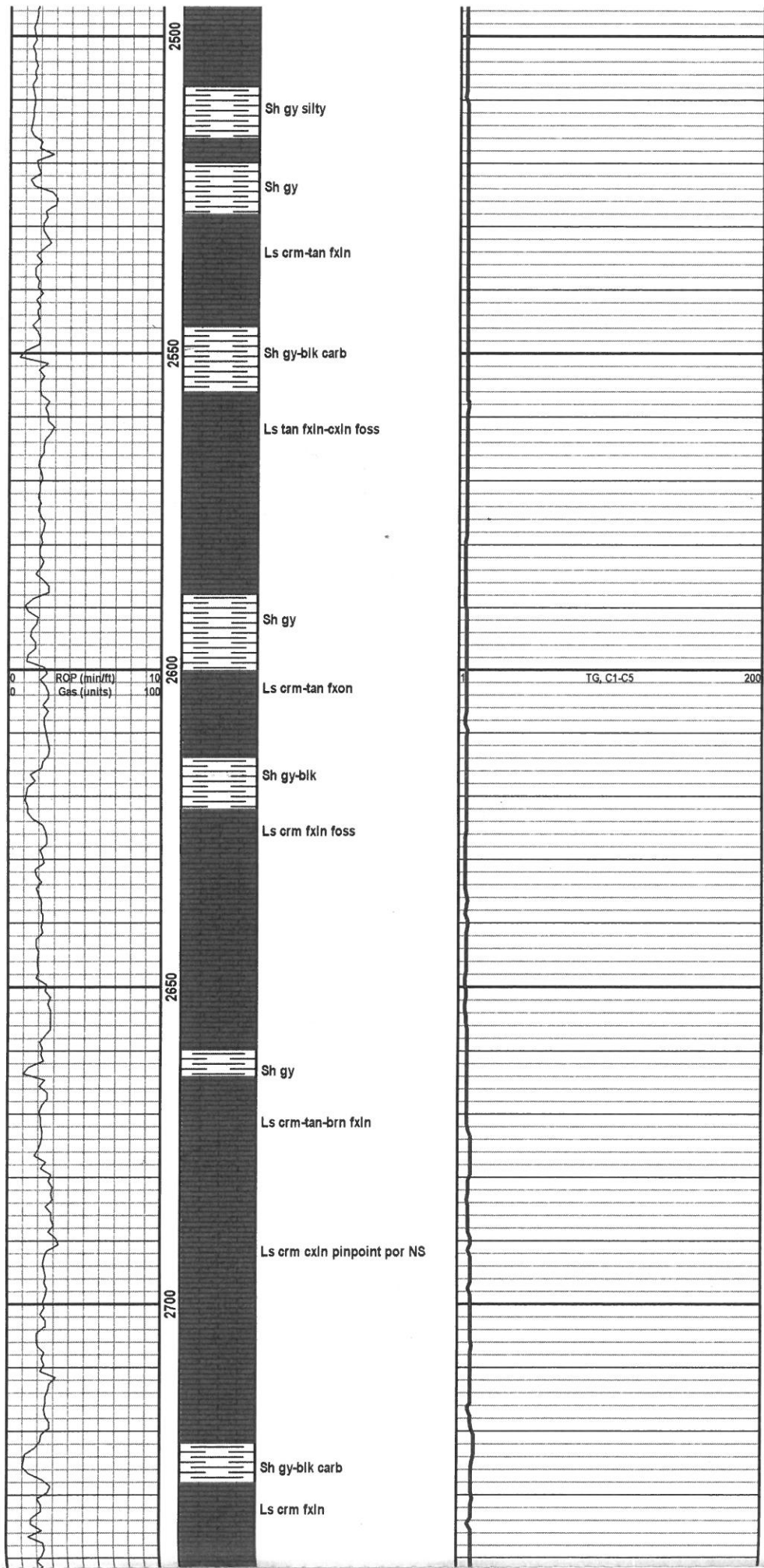


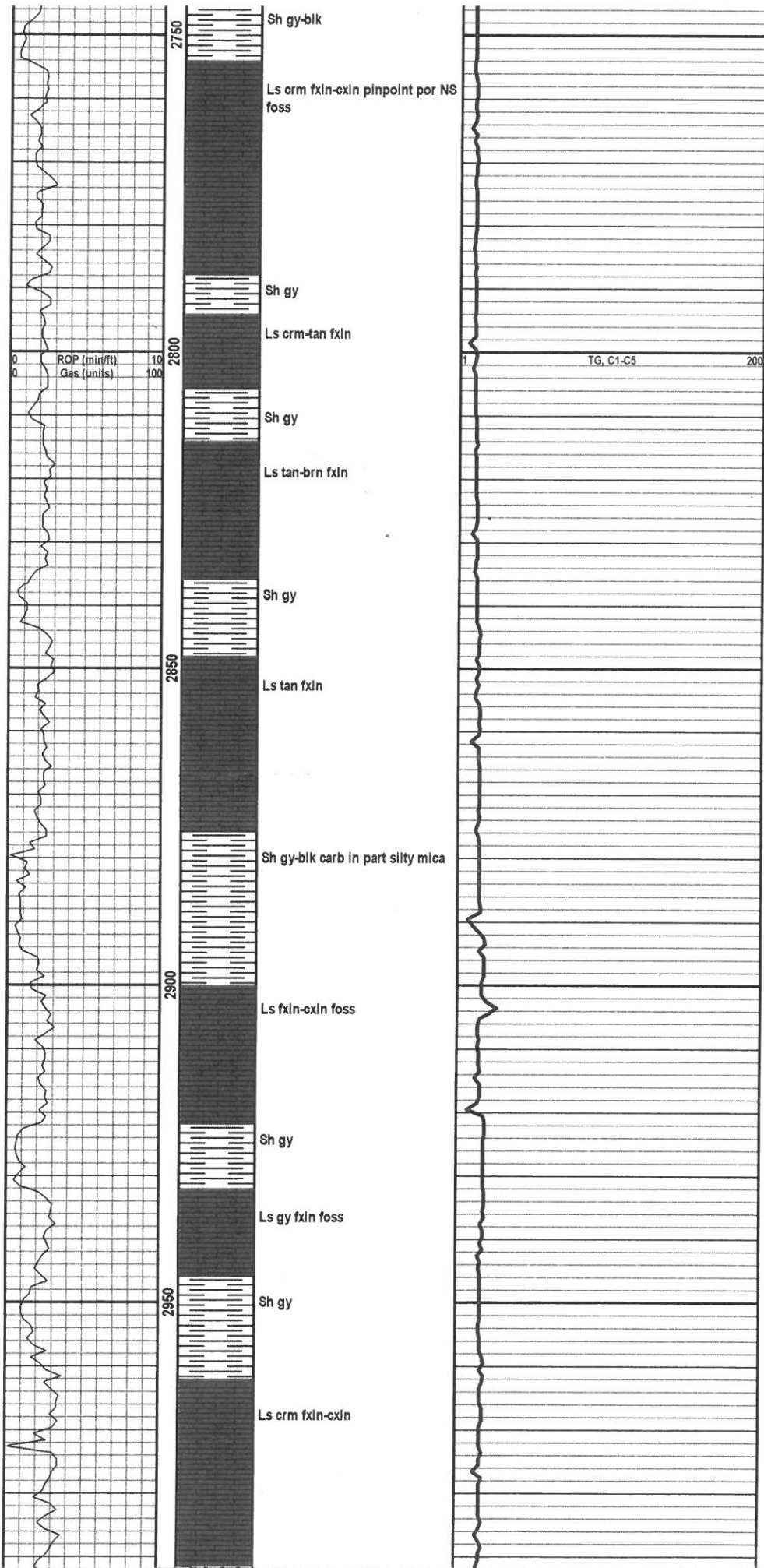


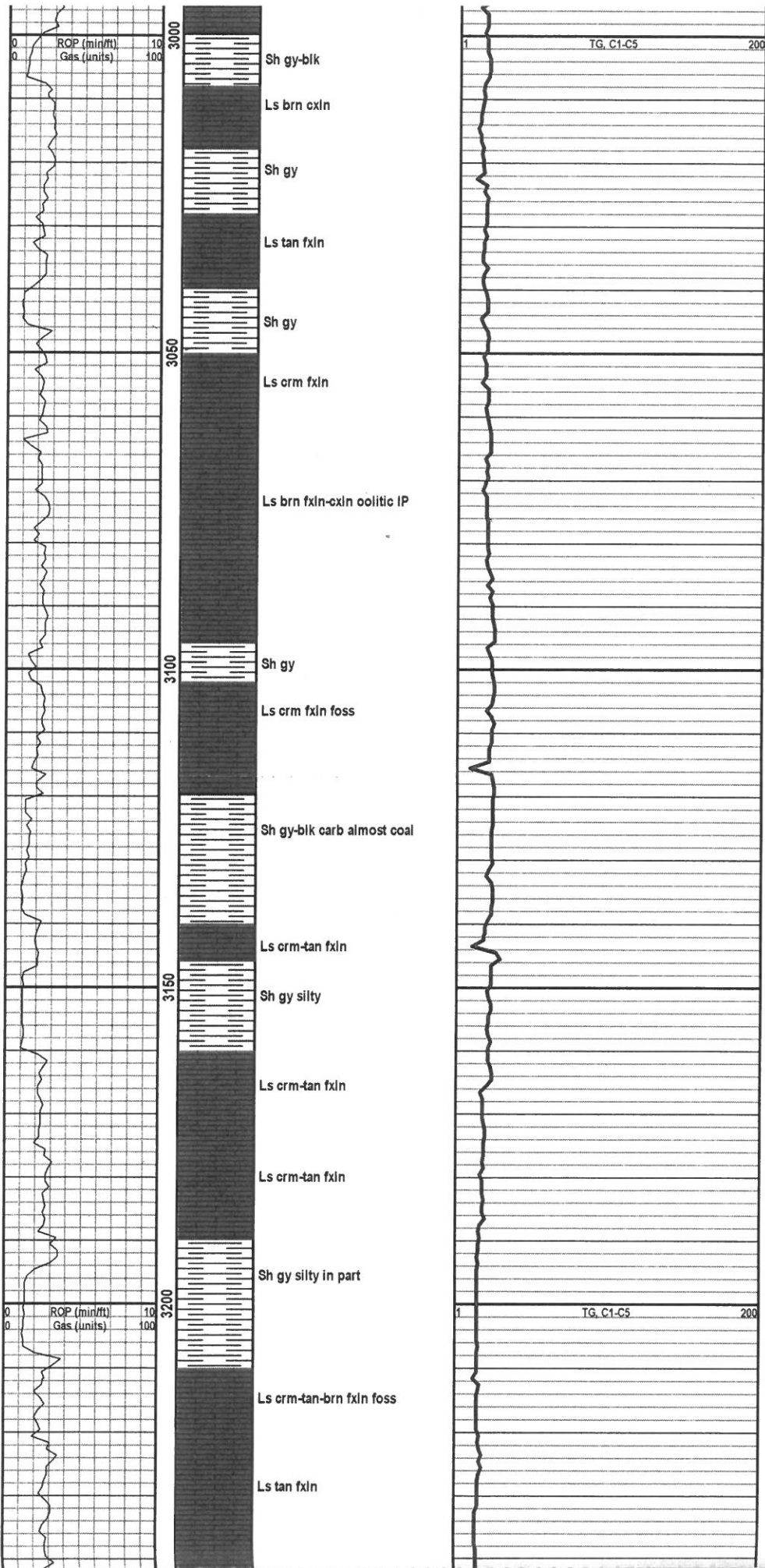
2250
 Ls gy fxln
 Anhydrite wt
Herrington 2276 -103
 Dol brn sucrosic NS slight gas kick
 2300
 Sh gy fissle
 Sh gy
Winfield 2334 -161
 Dol brn-gy sucrosic NS
 2350
 Dol brn suc. limy
 Dol brn suc
 Sh gy scattered
 2400
Towanda 2402 -229
 Dol gy sucricic limy NS 5 unit gas kick at 2420
 Sh gy
 2450
Ft. Riley 2448 -275
 Ls erm cxln pinpoint porosity slight gas kick
 Ls erm-tan cxln-fxln NS
 Ls erm-tan fxln NS

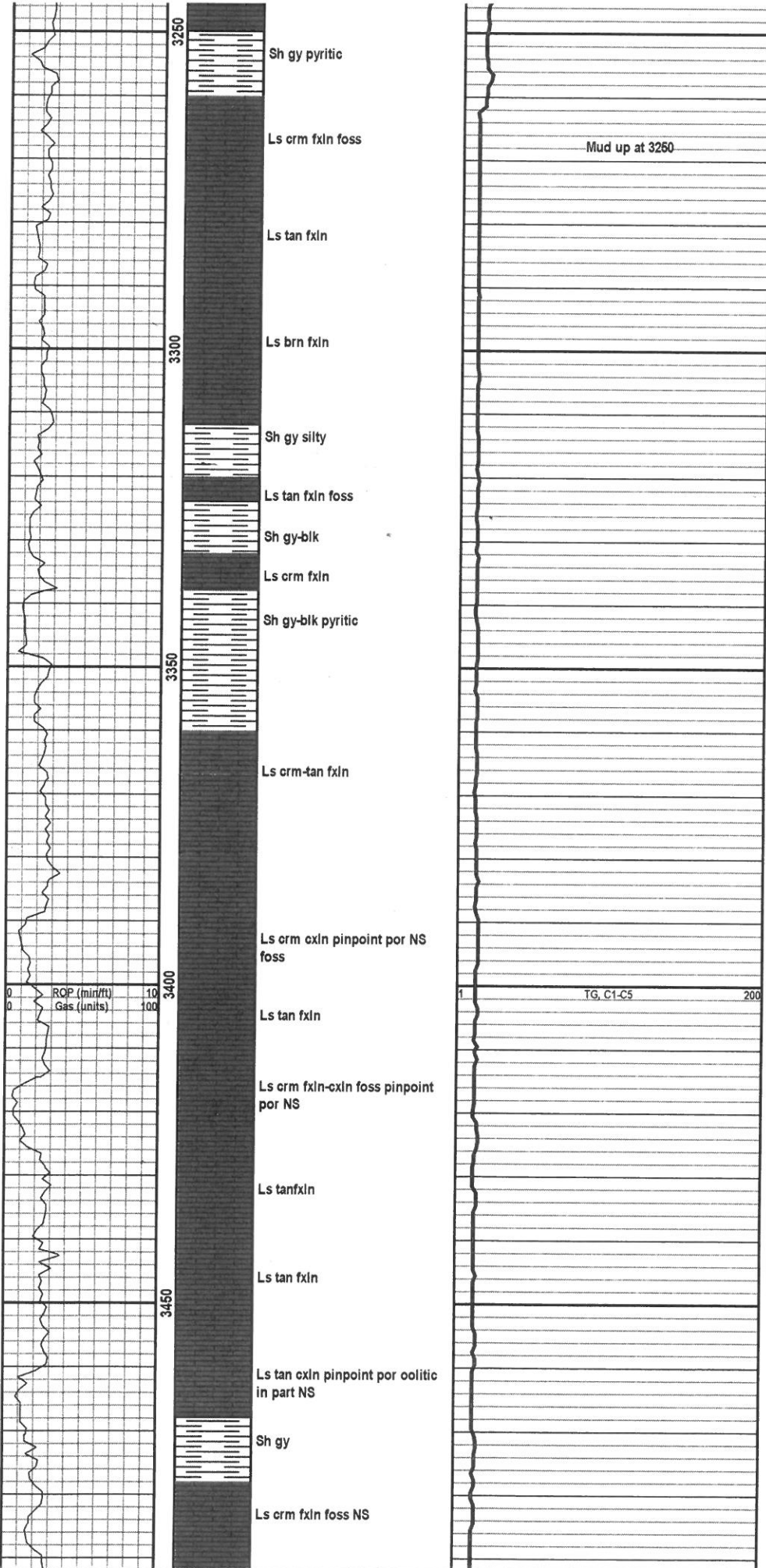


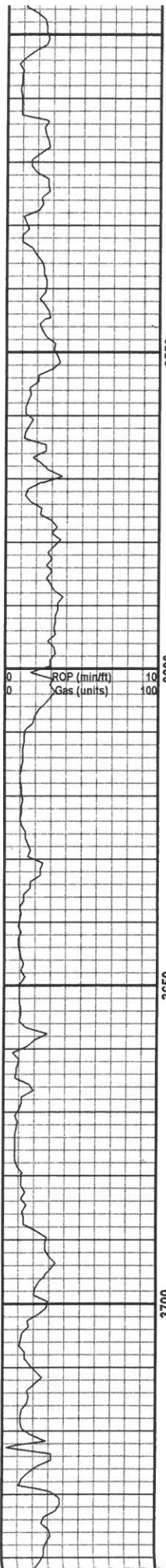
TG, C1-C5 200











3500
Ls crm cxln pinpoint por oolitic
in part slight blk stain NFO

Sh blk carb

Ls tan fxln pinpoint por NS

Ls tan fxln

3650
Ls crm cxln pinpoint to vuggy
por NS

Ls brn cxln pinpoint por NS

Sh gy silty

3600
Sh blk carb

Ls crm cxln pinpoint por NS

Ls tan cxln foss NS

3650
Ls crm cxln pinpoint por NS

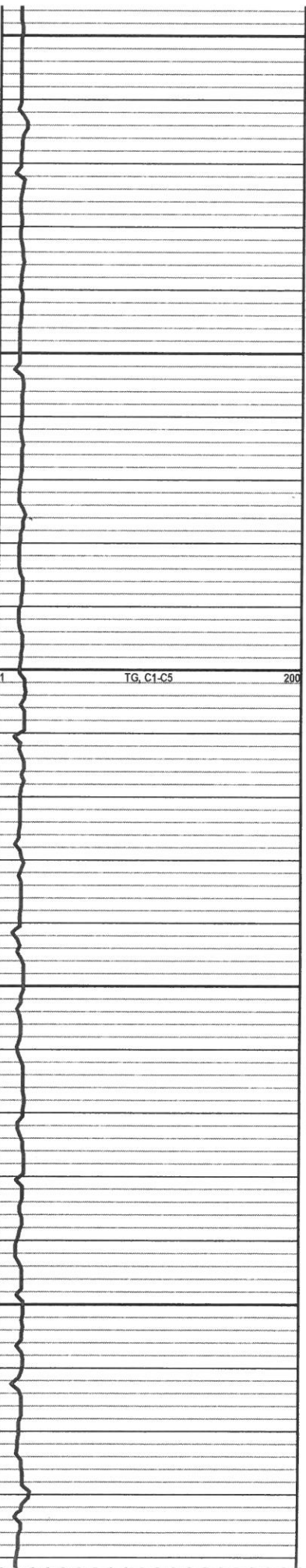
Ls tan cxln pinpoint por NS

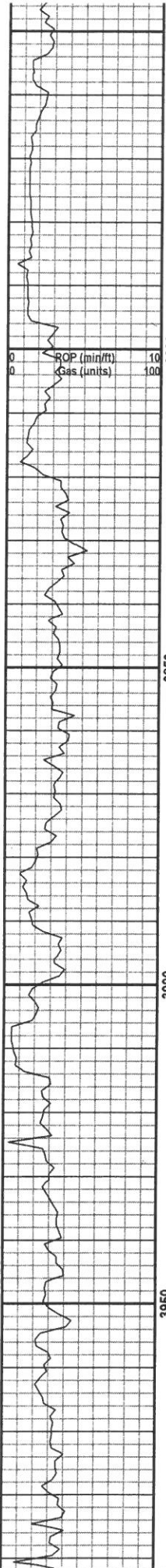
Ls crm fxln

3700

Heebner 3726-1553

Ls crm-tan fxln foss





Ls brn fxln

Sh gy silth

Ls crm-tan fxln foss

Lansing 3812 -1639

Ls crm fxln foss

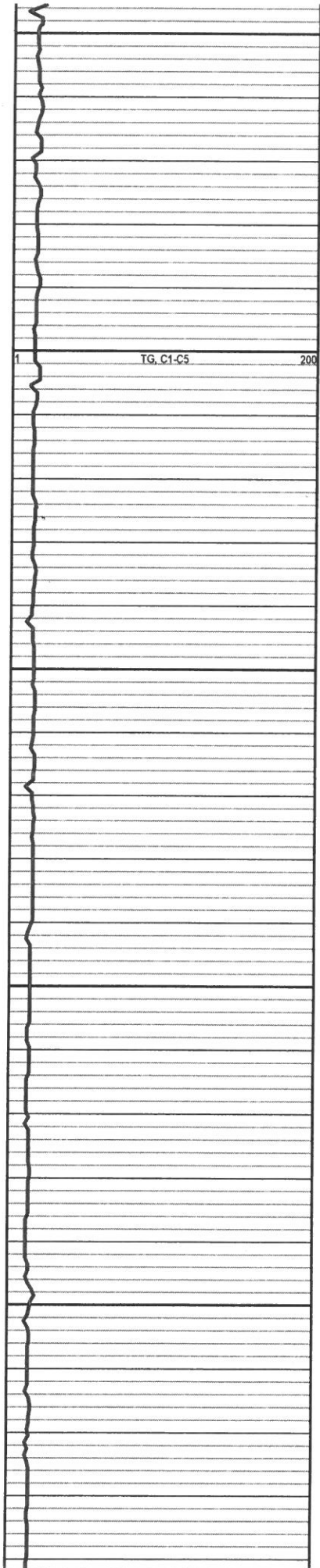
Ls fxln wt-gy foss

Ls wt-orm fxln foss

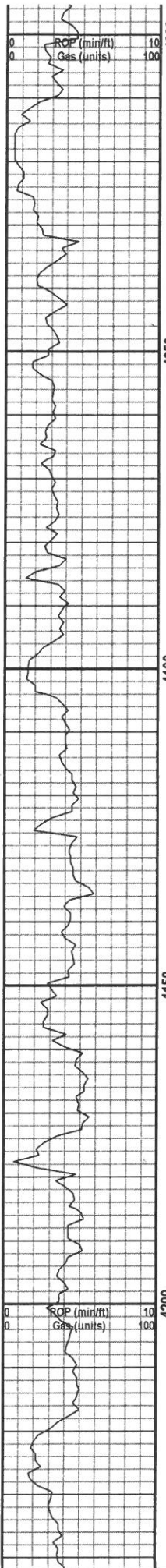
sh gry

Ls crm cxln oolitic

Sh gy silty



TG, C1-C5



Ls crm cxln oolitic

Sh gry blk carb IP

Ls crm fxon

Sh gry - blk carb IP

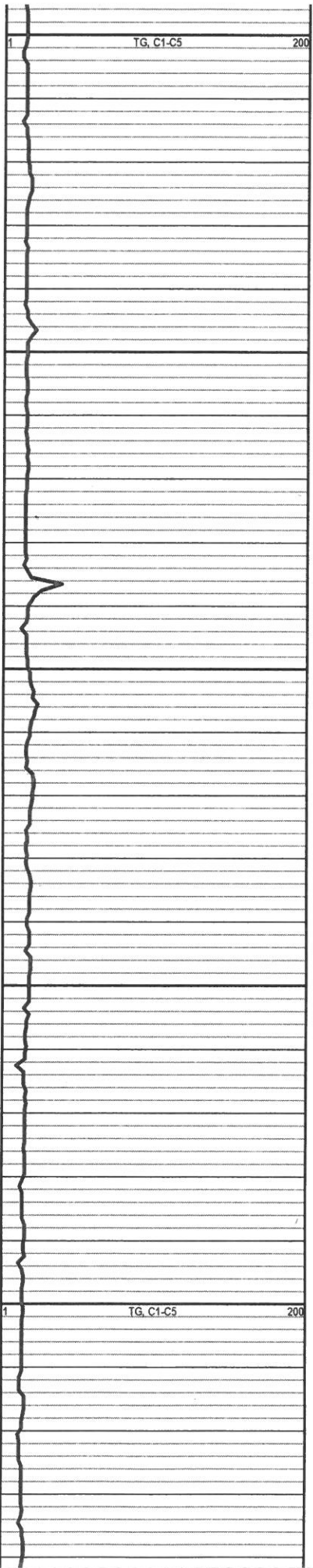
Ls crm fxln

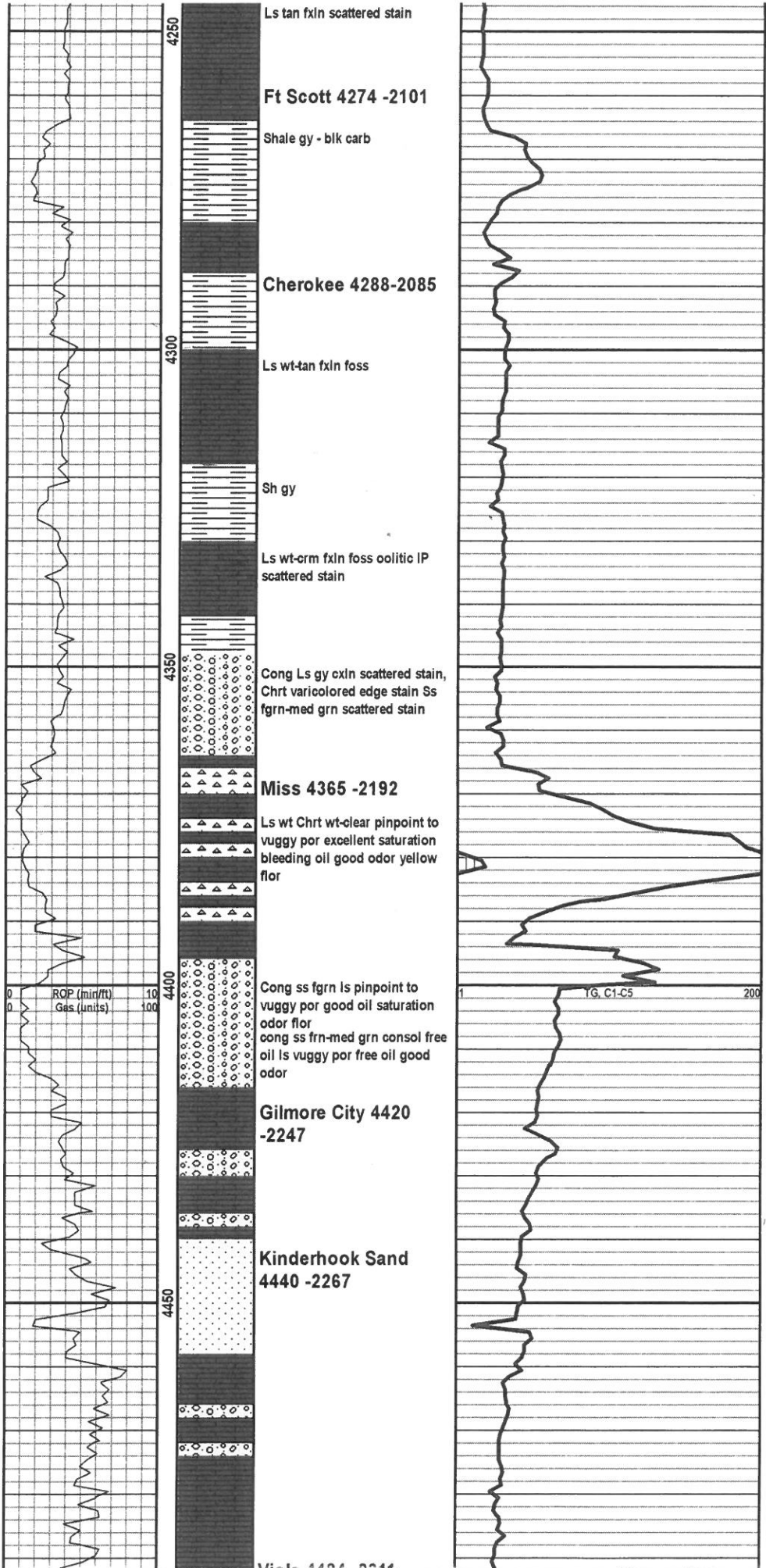
Ls tan fxln foss

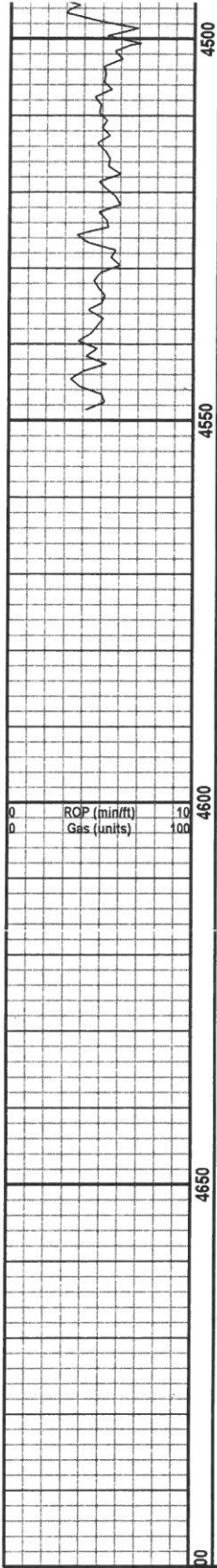
Ls crm fxln foss

Sh gy

Pawnee 4228 -2055
Ls tan fxln-cxln foss







Ls crm-wt fxln few foss
 Ls crm fxln Dol IP tan fxln
 Ls wt fxln
 Ls wt fxln
 Ls wt fxln

TD 4550'
 DST 4390-4403 REC: 15 OSM 63'
 mcw 252' wtr 1406-1404

