

Sean Deenihan

Petroleum Geologist

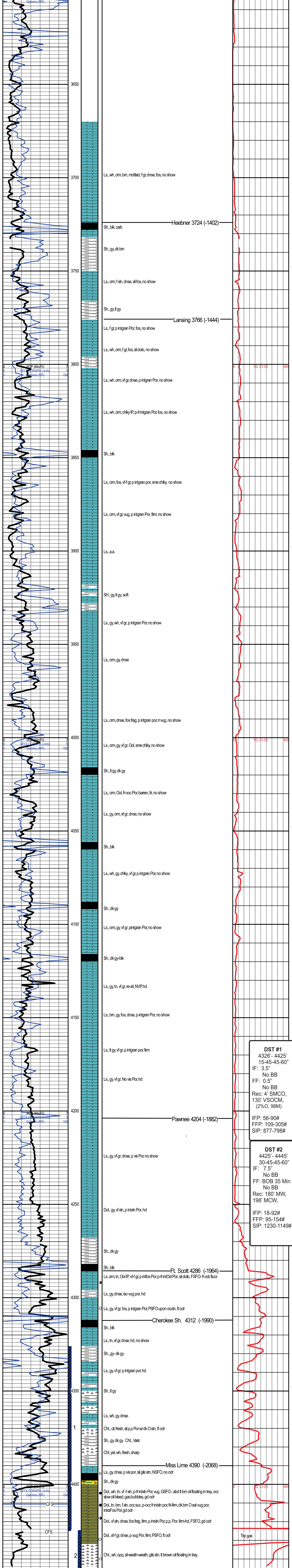
GEOLOGIST'S REPORT

DRILLING TIME AND SAMPLE LOG

COMPANY	Triple Crown Operating, LLC	ELEVATIONS	
LEASE	Lane Trust #2-3	KB	2322'
FIELD	Wildcat	DF	
LOCATION	732' FNL & 965' FWL	GL	2317'
SEC	3 TWSP 20 S RGE 24 W	Measurements Are All From Kelly Bushing	
COUNTY	Ness STATE Kansas	CASING	
CONTRACTOR	W.W. Drilling Rig #8	CONDUCTOR SURFACE	8-5/8" at 218'
SPUD	5/22/18 COMP 6/1/18	PRODUCTION	
RTD	4445' LTD 4444'	ELECTRICAL SURVEYS	
MUD UP	TYPE MUD Chemical	REFERENCE WELL	CND/DIL, MIC
SAMPLES SAVED FROM	3600' TO RTD		
DRILLING TIME KEPT FROM	3600' TO RTD		
SAMPLES EXAMINED FROM	3600' TO RTD		
GEOLOGICAL SUPERVISION FROM	3650'		
REFERENCE WELL			

REMARKS Based on sample, log, and DST analysis, the Lane Trust #2-3 was plugged and abandoned.

Respectfully Submitted,
Sean P. Deenihan



RTD: 4445'
LTD: 4444'

Triple Crown Operating, LLC
Lane Trust #2-3
3- 20S - 24W
Ness Co., KS

KB: 2322'