

# AUSTIN B. KLAUS

Cell 785.650.3629  
Work 785.483.3145  
Ext 225

PO BOX 352  
Russell, KS 67665  
austin.klaus@johnofarmer.com

Scale 1:240 (5"=100') Imperial  
Measured Depth Log

Well Name: McFarland #2  
Location: Graham County  
License Number: API #15-065-24149-00-00  
Spud Date: 5/1/2018  
Surface Coordinates: Section 18, Township 9 South, Range 21 West  
990' FNL & 430' FEL  
Bottom Hole Coordinates: Vertical well w/ minimal deviation, same as above  
Ground Elevation (ft): 2,272  
Logged Interval (ft): 3,200 To: RTD  
Formation: LKC-Arbuckle  
Type of Drilling Fluid: Chemical (Andy's)

Region: Kansas

Drilling Completed: 5/5/2018

K.B. Elevation (ft): 2,277

Total Depth (ft): 3,860

Printed by STRIP.LOG from WellSight Systems 1-800-447-1534 www.WellSight.com

## OPERATOR

Company: American Oil, LLC  
Address: 1200 Main, Suite 410  
Hays, KS 67601

## GEOLOGIST

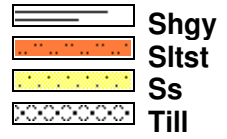
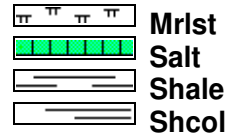
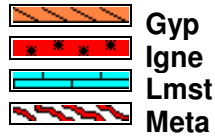
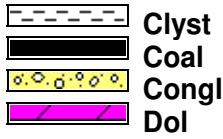
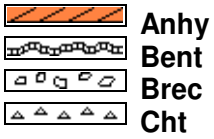
Name: Austin Klaus  
Company: John O. Farmer, Inc.  
Address: 370 W. Wichita Ave.  
Russell, KS 67665

## Comments

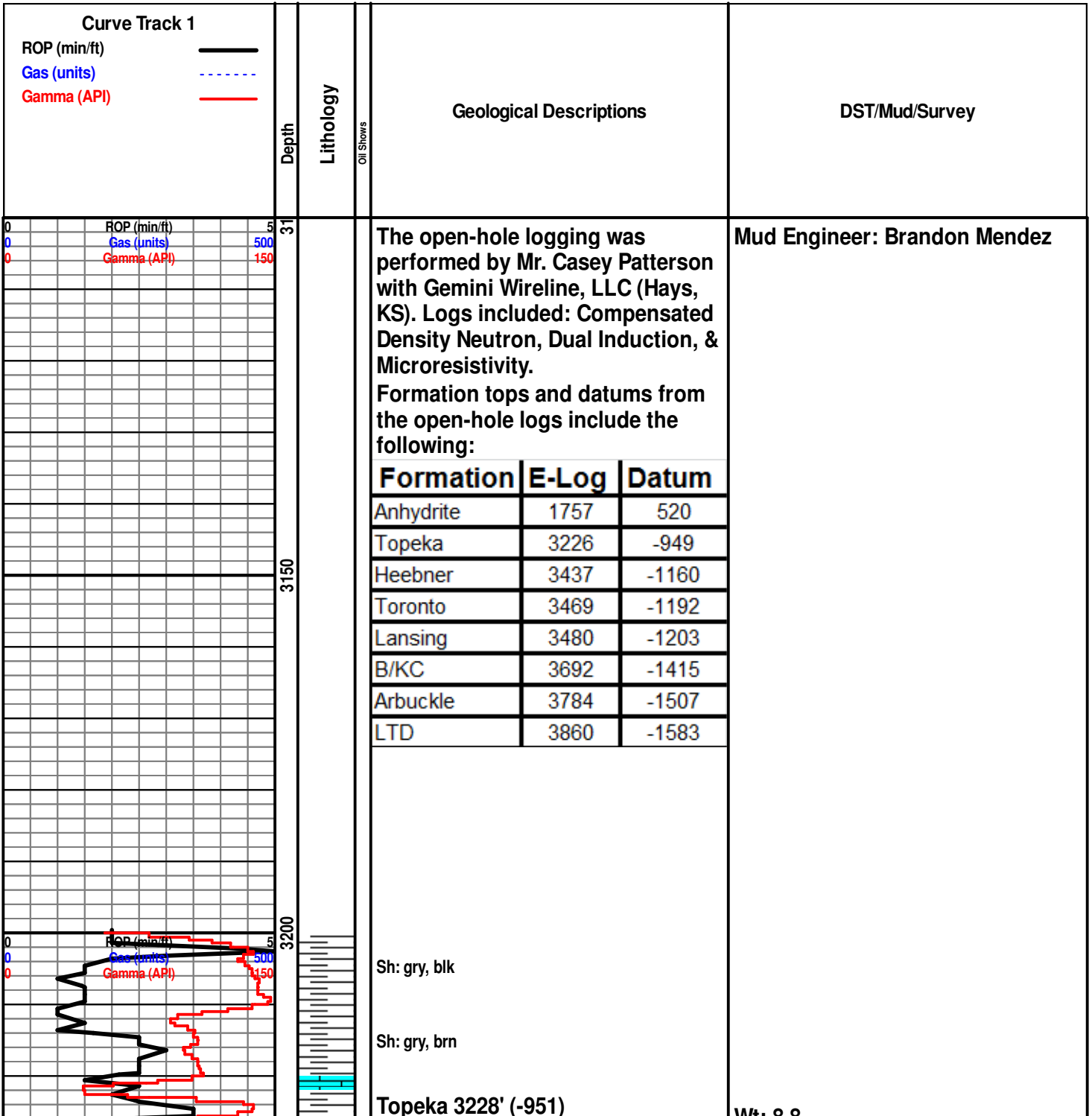
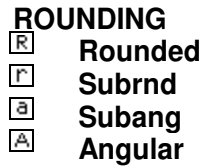
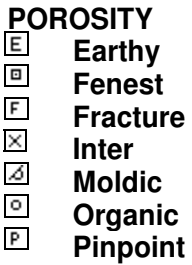
The McFarland #2 well was drilled by Murfin Drilling Rig #24.

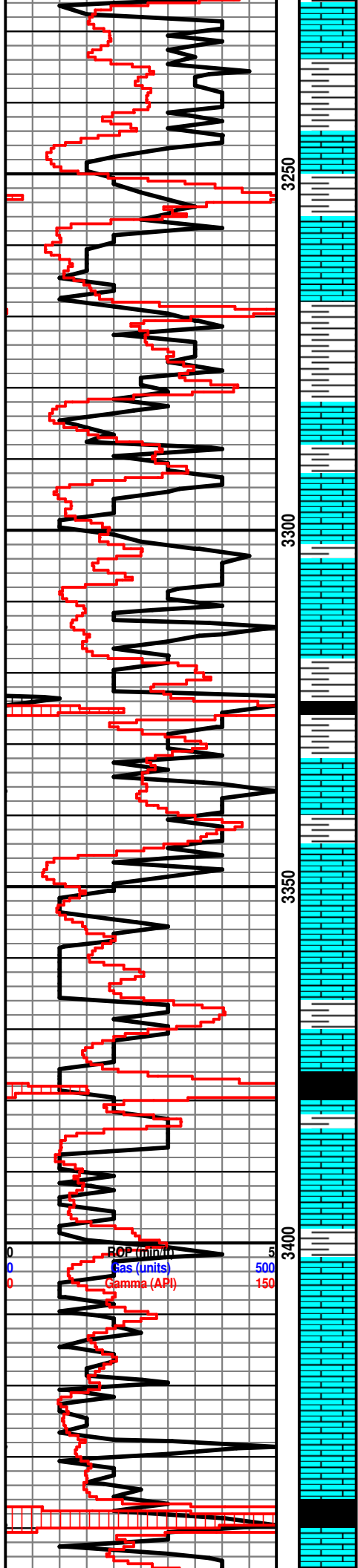
The McFarland #2 was drilled as production offset. Rock samples were gathered and evaluated from 3,200'-3,860'. Oil shows were encountered in the LKC C, F, J, K and Arbuckle. Structurally, the Lansing top was picked flat to the comparison well, 100' to the southeast (Seefeld #5 - 1950'). Structure remained consistent through the LKC and below, which resulted in an Arbuckle picked flat to the comparison well. After evaluation of all oil shows and electric logs, it was decided that 5 1/2" production casing be set to further evaluate the McFarland #2 on 5/6/18.

**ROCK TYPES**



**OTHER SYMBOLS**





Ls: off wh-gry, fn xln, scat foss, scat chalk

Sh: gry-brn

Ls: off wh, fn xln, poor int part & scat pp vuggy porosity, NSFO, scat chalk

Sh: gry

Ls: buff, fn xln, ool, scat pyrite

Ls: ala

Sh: drk gry-blk

Slst: brn

Ls: off wh-buff, fn xln, NSFO, scat chalk

Sh: drk gry-blk

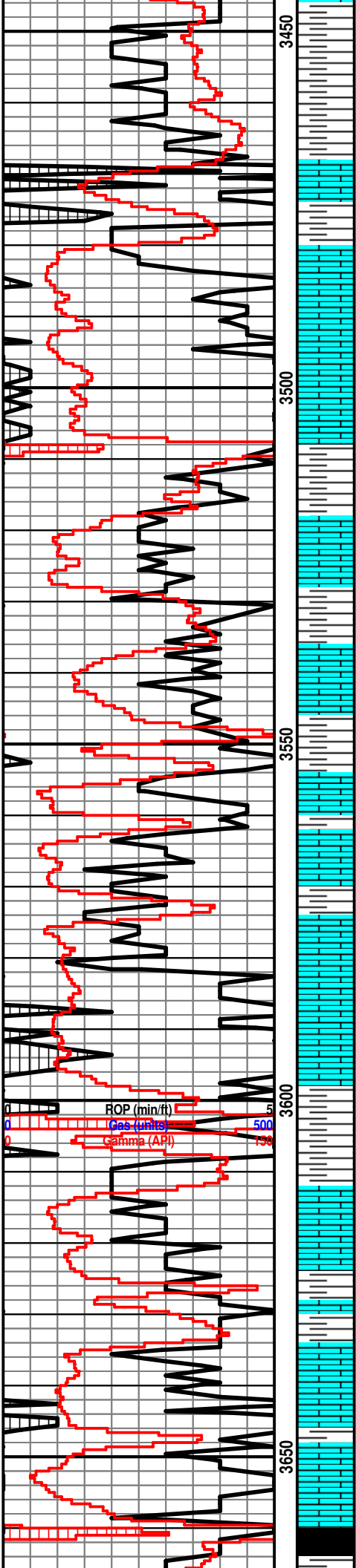
Ls: off wh, fn xln, chalky

Ls: buff, fn xln, poor-fair int part porosity, NSFO, scat chert

Ls: ala

**Heebner 3440' (-1163)**

Sh: blk, carb, fissile



Sh: drk gry-brn, soft

**Toronto 3466' (-1189)**

Ls: buff, fn xln, no visible porosity, NSFO

Sh: drk gry-brn

**Lansing 3481' (-1204)**

Ls: buff, fn xln, poor int part porosity, mostly DNS, NSFO

Ls: off wh-buff, fn xln, no visible porosity, scat chert-off wh

Sh: drk gry-brn

Ls: off wh, fn xln, ool, poor-fair int part porosity, scat oil stn, VSSFO, fnt odor, scat chert-off wh

Sh: drk gry-brn

Ls: off wh, fn xln, poor int xln porosity, vry lt oil stn, fnt odor, scat chert-off wh

Sh: drk gry-brn

Ls: off wh, fn xln, scat foss, poor int part & scat int foss porosity, scat oil stn, NSFO

Ls: off wh, fn xln, foss, poor-fair int part porosity, fair oil stn, VSSFO, fnt odor, chalky

Ls: off wh-buff, fn xln, chalky, NSFO

Ls: ala

Sh: drk gry

Ls: tan-gry, fn xln, DNS, NSFO, scat chert

Sh: drk gry

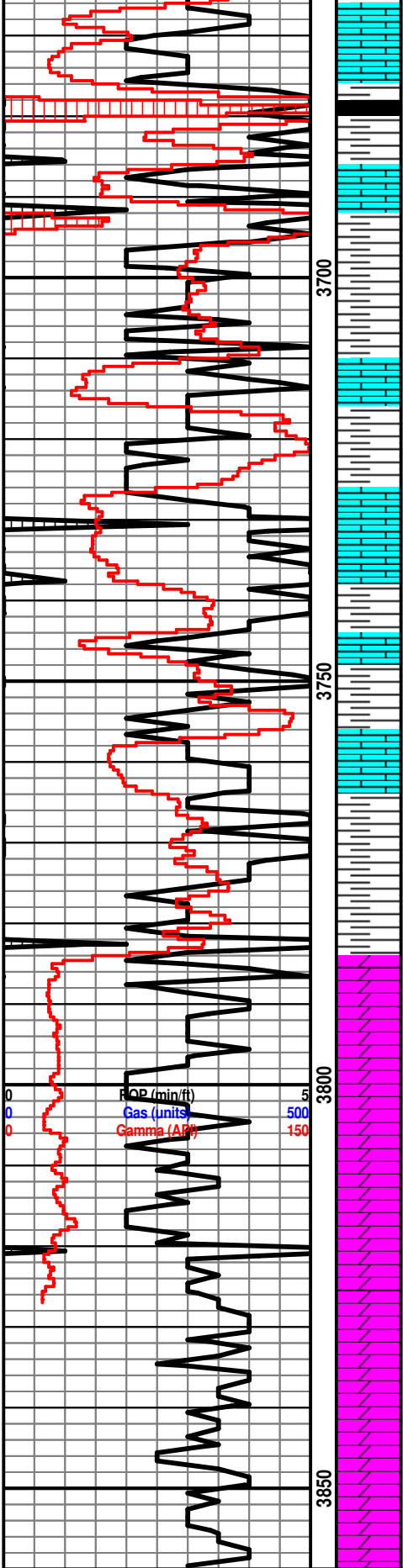
Ls: buff, fn xln, NSFO, chalky

Sh: drk gry

Ls: off wh, fn xln, foss, poor-fair int part & scat int foss porosity, fair oil stn, VSSFO, fnt odor

Sh: blk, carb

Wt: 9.5  
Vis: 62



Ls: off wh, fn xln, foss, poor int part porosity, sl-fair oil stn, VSSFO, fnt odor, scat chert-off wh

Sh: drk gry-blk

Ls: buff, fn xln, scat chert

**B/KC 3694' (-1417)**

Sh: drk gry-brn

Ls: buff, fn xln, chalky, scat chert-off wh

Sh: drk gry-brn

Ls: off wh, fn xln, ool, scat int part porosity, scat oil stn, VSSFO, fnt odor

Sh: drk gry-brn, soft

Sh: drk gry-brn, scat chert

Ls: buff, fn xln, scat foss, chert

Sh: gry-grn

**Arbuckle 3785' (-1508)**

Dolo: off wh-tan, fn-md xln, fair int xln porosity, scat-fair oil stn in porosity, FSFO, good odor

Dolo: off wh-tan, fn-md xln, fair-good int xln porosity, fair-good oil sat, FSFO, good odor, scat sh

Dolo: buff-tan, fn-md xln, poor int xln porosity, fair oil stn in porosity, S-FSFO, fair-good odor

Dolo: buff, fn-md xln, poor-fair int xln & scat int part porosity, scat oil stn, mostly barren, fair odor

Dolo: off wh-buff, fn-md xln, poor int xln porosity, barren

Dolo: ala

Dolo: off wh-tan, fn-md xln, poor int xln porosity, NSFO