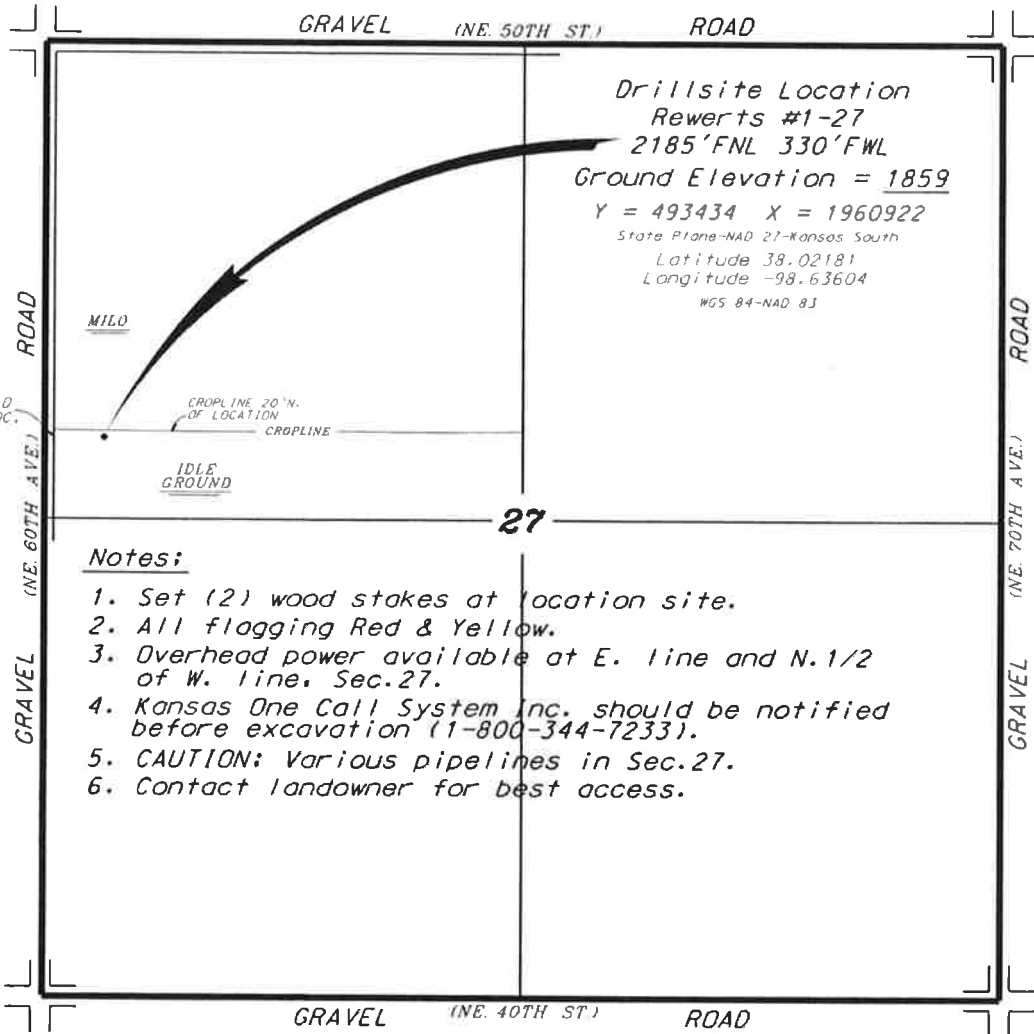


RAMA OPERATING COMPANY, INC.  
 REWERTS LEASE  
 NW. 1/4, SECTION 27, T23S, R12W  
 STAFFORD COUNTY, KANSAS

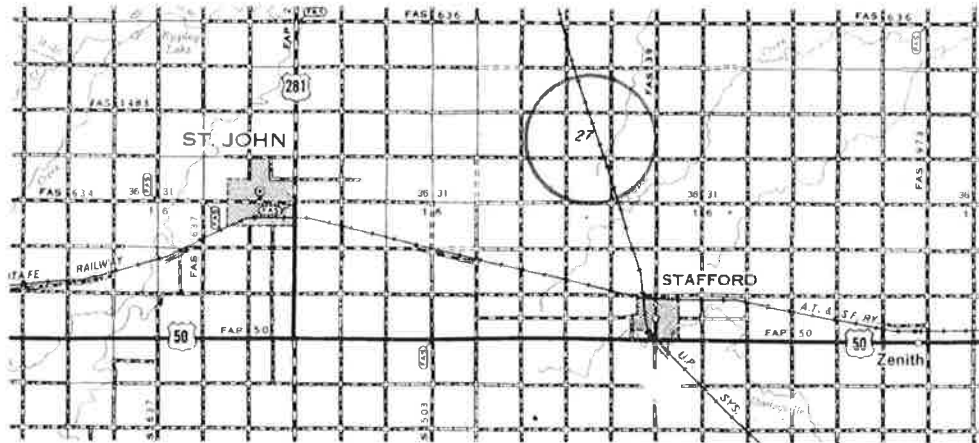


Drillsite Location  
 Rewerts #1-27  
 2185'FNL 330'FWL  
 Ground Elevation = 1859  
 Y = 493434 X = 1960922  
 State Plane-NAD 27-Kansas South  
 Latitude 38.02181  
 Longitude -98.63604  
 WGS 84-NAD 83

**Notes:**

1. Set (2) wood stakes at location site.
2. All flagging Red & Yellow.
3. Overhead power available at E. line and N. 1/2 of W. line, Sec. 27.
4. Kansas One Call System Inc. should be notified before excavation (1-800-344-7233).
5. CAUTION: Various pipelines in Sec. 27.
6. Contact landowner for best access.

\* Ingress and egress to location as shown on this plot is per usage only and may not be legally opened for public use. Contact landowner, tenant and county road department for access.



Controlling data is based upon the best maps and photographs available to us and upon a regular section of land containing 640 acres.  
 Appropriate section lines were determined using the normal standard of care of oilfield surveyors practicing in the state of Kansas. The section corners, which establish the precise section lines, were not necessarily located, and the exact location of the drillsite location in the section is not guaranteed. Therefore, the operator securing this service and accepting this plot and all other parties relying thereon agree to hold Central Kansas Oilfield Services, Inc., its officers and employees harmless from all losses, costs and expenses and said liabilities released from any liability from incidental or consequential damages.  
 Elevations derived from National Geodetic Vertical Datum.

Date October 23, 2018