

**STRATAKAN EXPLORATION, LLC
MORROW LEASE
IN SECTIONS 27 & 34, T33S, R8W
HARPER COUNTY, KANSAS**

Y = 176883
X = 2092086

Y = 176880
X = 2094722

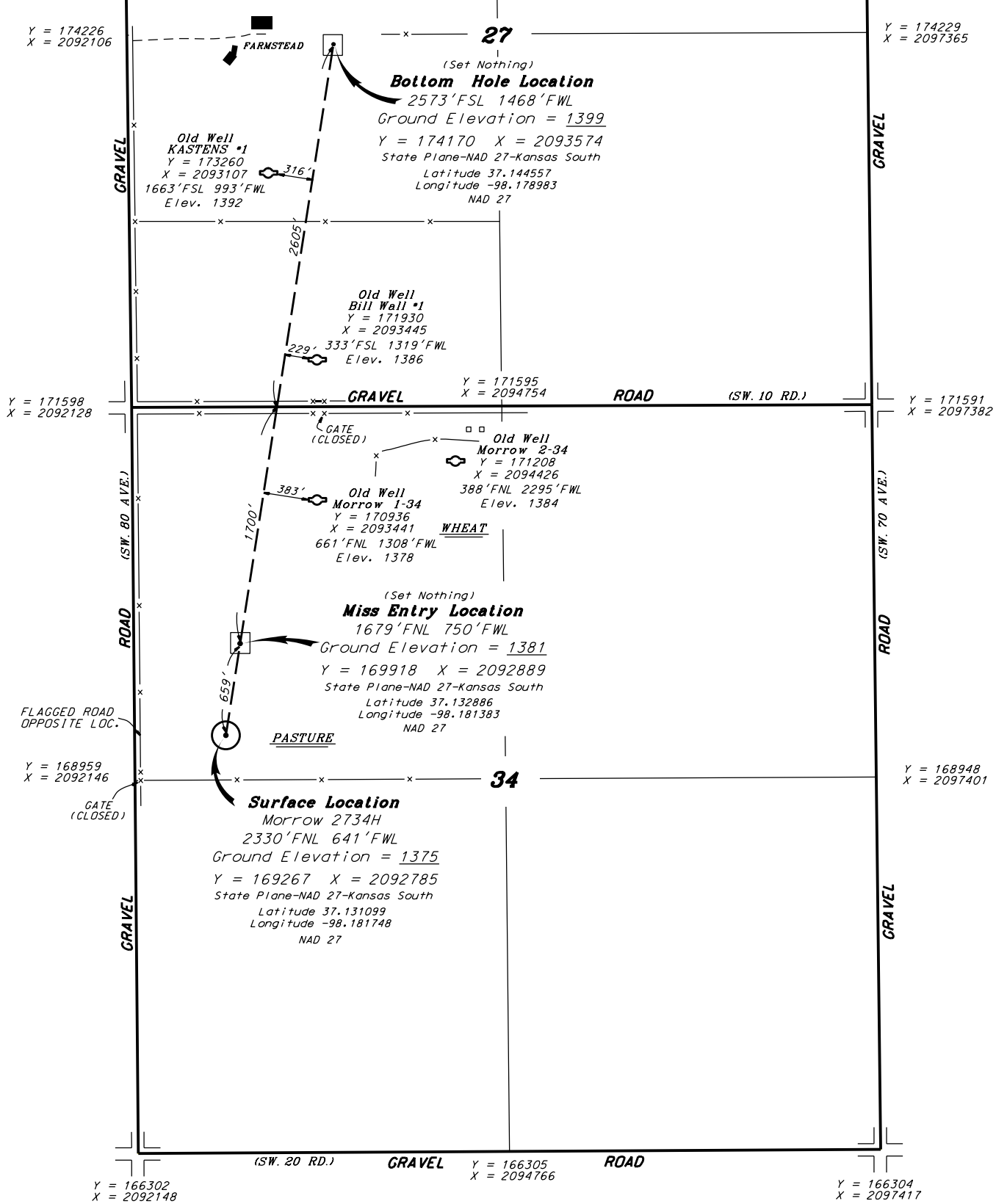
Y = 176876
X = 2097346

HIGHWAY 2-14

Notes:

1. Set iron rod at surface location.
2. All flagging Red & Yellow.
3. Overhead power available at N. & W. lines, Sec. 34.
4. Kansas One Call System Inc. should be notified before excavation (1-800-344-7233).
5. CAUTION: Various pipelines in Sec. 27
6. Found old wells per magnetic response.
7. Contact landowner for best access.
8. All coordinate's shown on plat are in State Plane NAD 27 Kansas South.

SCALE 1" = 1000'



* Controlling data is based upon the best maps and photographs available to us and upon a regular section of land containing 640 acres.

* Approximate section lines were determined using the normal standard of care of oilfield surveyors practicing in the state of Kansas. The section corners, which establish the precise section lines, were not necessarily located, and the exact location of the drillsite location in the section is not guaranteed. Therefore, the operator securing this service and accepting this plat and all other parties relying thereon agree to hold Central Kansas Oilfield Services, Inc., its officers and employees harmless from all losses, costs and expenses and said entities released from any liability from incidental or consequential damages.

* Elevations derived from National Geodetic Vertical Datum.

Date October 18, 2018

CENTRAL KANSAS OILFIELD SERVICES, INC. (620)792-1977