

KANSAS CORPORATION COMMISSION
OIL & GAS CONSERVATION DIVISION

Form must be Typed
Form must be signed

TEMPORARY ABANDONMENT WELL APPLICATION

All blanks must be complete

OPERATOR: License#
Name:
Address 1:
Address 2:
City: State: Zip:
Contact Person:
Phone:
Contact Person Email:
Field Contact Person:
Field Contact Person Phone:

API No. 15-
Spot Description:
Sec. Twp. S. R.
feet from N / S Line of Section
feet from E / W Line of Section
GPS Location: Lat: , Long:
Datum: NAD27 NAD83 WGS84
County: Elevation: GL KB
Lease Name: Well #:
Well Type: (check one) Oil Gas OG WSW Other:
SWD Permit #: ENHR Permit #:
Gas Storage Permit #:
Spud Date: Date Shut-In:

Table with 7 columns: Conductor, Surface, Production, Intermediate, Liner, Tubing. Rows include Size, Setting Depth, Amount of Cement, Top of Cement, Bottom of Cement.

Casing Fluid Level from Surface: How Determined? Date:
Casing Squeeze(s): to w / sacks of cement, to w / sacks of cement. Date:
Do you have a valid Oil & Gas Lease? Yes No
Depth and Type: Junk in Hole at Tools in Hole at Casing Leaks: Yes No Depth of casing leak(s):
Type Completion: ALT. I ALT. II Depth of: DV Tool: w / sacks of cement Port Collar: w / sack of cement
Packer Type: Size: Inch Set at: Feet
Total Depth: Plug Back Depth: Plug Back Method:

Geological Data:

Table with 4 columns: Formation Name, Formation Top, Formation Base, Completion Information. Rows 1 and 2.

UNDER PENALTY OF PERJURY I HEREBY ATTEST THAT THE INFORMATION CONTAINED HEREIN IS TRUE AND CORRECT TO THE BEST OF MY KNOWLEDGE

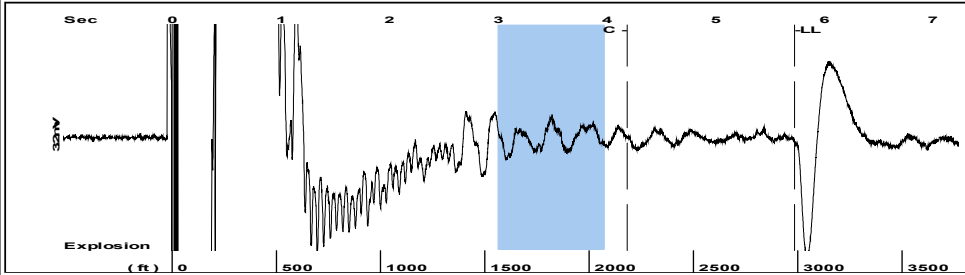
Submitted Electronically

Do NOT Write in This Space - KCC USE ONLY
Date Tested: Results: Date Plugged: Date Repaired: Date Put Back in Service:
Review Completed by: Comments:
TA Approved: Yes Denied Date:

Mail to the Appropriate KCC Conservation Office:

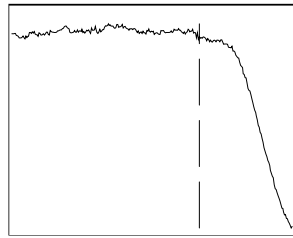
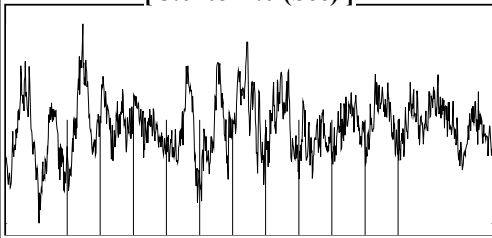
Table with 3 columns: District Office #, Address, Phone. Rows 1-4.

Group: MyWells Well: Huck A #13 (acquired on: 11/02/18 12:25:43)



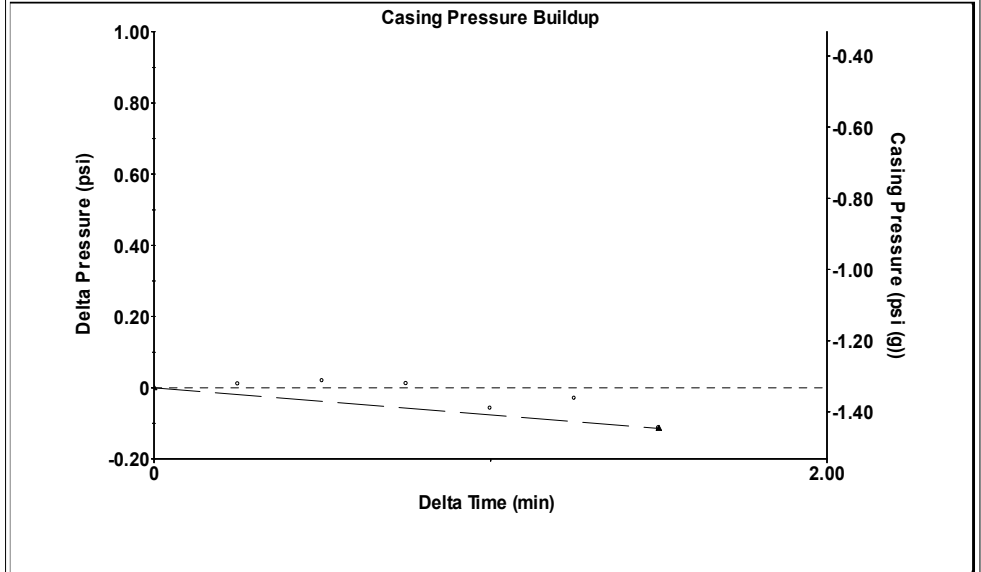
Filter Type High Pass Automatic Collar Count Yes Time 5.727 sec
 Manual Acoustic Veloc 920.588 ft/s Manual JTS/sec 14.7059 Joints 95.3522 Jts
 Depth 2984.52 ft

[3.0 to 4.0 (Sec)]



Analysis Method: Automatic

Group: MyWells Well: Huck A #13 (acquired on: 11/02/18 12:25:43)

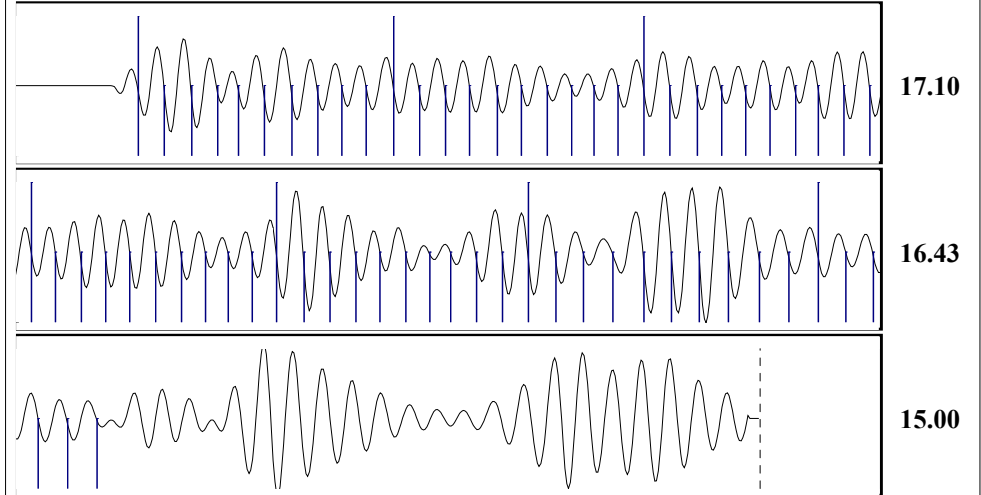


Change in Pressure -0.11 psi PT12830
 Change in Time 1.50 min Range 0 - ? psi

Group: MyWells Well: Huck A #13 (acquired on: 11/02/18 12:25:43)

Production Current	Potential	Casing Pressure	Static
Oil - *-	- *- BBL/D	-1.3 psi (g)	
Water - *-	- *- BBL/D	Casing Pressure Buildup	Oil Column Height
Gas - *-	- *- Mscf/D	-0.1 psi	MD - *- ft
		1.50 min	
IPR Method	Vogel	Gas/Liquid Interface Pressure	Water Column Height
PBHP/SBHP	- *-	- *- psi (g)	MD - *- ft
Production Efficiency	0.0		
Oil 40 deg.API		Liquid Level Depth	
Water 1.05 Sp.Gr.H2O		2984.52 ft	
Gas 0.94 Sp.Gr.AIR		Pump Intake Depth	
		- *- ft	
Acoustic Velocity	1042.26 ft/s	Formation Depth	
		3842.00 ft	
Acoustic Test			Static BHP
			- *- psi (g)

Group: MyWells Well: Huck A #13 (acquired on: 11/02/18 12:25:43)



Acoustic Velocity 1042.26 ft/s Joints counted 65
 Joints Per Second 16.6496 jts/sec Joints to liquid level 95.3522
 Depth to liquid level 2984.52 ft Filter Width 12.7059 16.7059
 Automatic Collar Count Yes Time to 1st Collar 0.284 4.188

STATE OF KANSAS

CORPORATION COMMISSION
CONSERVATION DIVISION
DISTRICT OFFICE No. 4
2301 E. 13TH STREET
HAYS, KS 67601-2651



PHONE: 785-261-6250
FAX: 785-625-0564
<http://kcc.ks.gov/>

GOVERNOR JEFF COLYER, M.D.

SHARI FEIST ALBRECHT, CHAIR | JAY SCOTT EMLER, COMMISSIONER | DWIGHT D. KEEN, COMMISSIONER

November 05, 2018

Jim Farthing
Empire Energy E&P, LLC
345 RIVERVIEW ST., STE 540
WICHITA, KS 67203-4262

Re: Temporary Abandonment
API 15-051-24601-00-00
HUCK A 13
NW/4 Sec.31-11S-20W
Ellis County, Kansas

Dear Jim Farthing:

"Your temporary abandonment (TA) application for the well listed above has been approved. In accordance with K.A.R. 82-3-111 the TA status of this well will expire 11/05/2019.

- * If you return this well to service or plug it, please notify the District Office.
- * If you sell this well you are required to file a Transfer of Operator form, T-1.
- * If the well will remain temporarily abandoned, you must submit a new TA application, CP-111, before 11/05/2019.

You may contact me at the number above if you have questions.

Very truly yours,

RICHARD WILLIAMS"