

KANSAS CORPORATION COMMISSION
OIL & GAS CONSERVATION DIVISION

TEMPORARY ABANDONMENT WELL APPLICATION

OPERATOR: License#
Name:
Address 1:
Address 2:
City: State: Zip:
Contact Person:
Phone:
Contact Person Email:
Field Contact Person:
Field Contact Person Phone:

API No. 15-
Spot Description:
Sec. Twp. S. R.
feet from N / S Line of Section
feet from E / W Line of Section
GPS Location: Lat: , Long:
Datum: NAD27 NAD83 WGS84
County: Elevation: GL KB
Lease Name: Well #:
Well Type: Oil Gas OG WSW Other:
SWD Permit #: ENHR Permit #:
Gas Storage Permit #:
Spud Date: Date Shut-In:

Table with 7 columns: Conductor, Surface, Production, Intermediate, Liner, Tubing. Rows include Size, Setting Depth, Amount of Cement, Top of Cement, Bottom of Cement.

Casing Fluid Level from Surface: How Determined? Date:
Casing Squeeze(s): to w / sacks of cement, to w / sacks of cement. Date:
Do you have a valid Oil & Gas Lease? Yes No
Depth and Type: Junk in Hole at Tools in Hole at Casing Leaks: Yes No Depth of casing leak(s):
Type Completion: ALT. I ALT. II Depth of: DV Tool: w / sacks of cement Port Collar: w / sack of cement
Packer Type: Size: Inch Set at: Feet
Total Depth: Plug Back Depth: Plug Back Method:

Geological Date:

Table with 4 columns: Formation Name, Formation Top, Formation Base, Completion Information. Rows 1 and 2.

UNDER PENALTY OF PERJURY I HEREBY ATTEST THAT THE INFORMATION CONTAINED HEREIN IS TRUE AND CORRECT TO THE BEST OF MY KNOWLEDGE

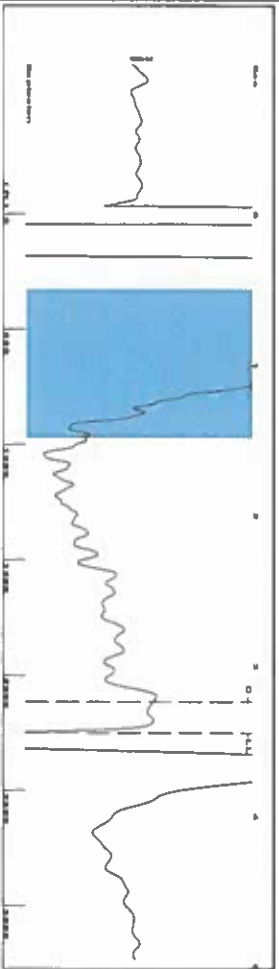
Submitted Electronically

Do NOT Write in This Space - KCC USE ONLY
Date Tested: Results: Date Plugged: Date Repaired: Date Put Back in Service:
Review Completed by: Comments:
TA Approved: Yes Denied Date:

Mail to the Appropriate KCC Conservation Office:

Table with 3 columns: District Office, Address, Phone. Rows for District Office #1, #2, #3, #4.

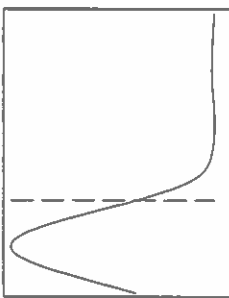
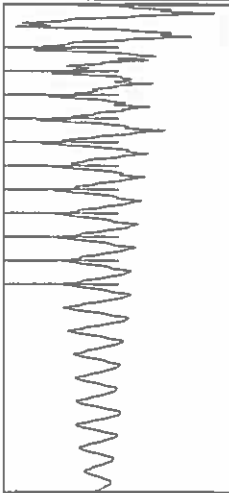
Group: SUBLETTE Well: Myers A-2 (acquired on: 12/10/18 13:53:57)



Filter Type High Pass
Manual Acoustic Velo 1297.33 ft/s
Automatic Collar Count Yes
Manual JTS/sec 20.5339

Time 3.446 sec
Joints 71.208 J/s
Depth 2249.46 ft

[0.5 to 1.5 (Sec)]



Analysis Method: Automatic

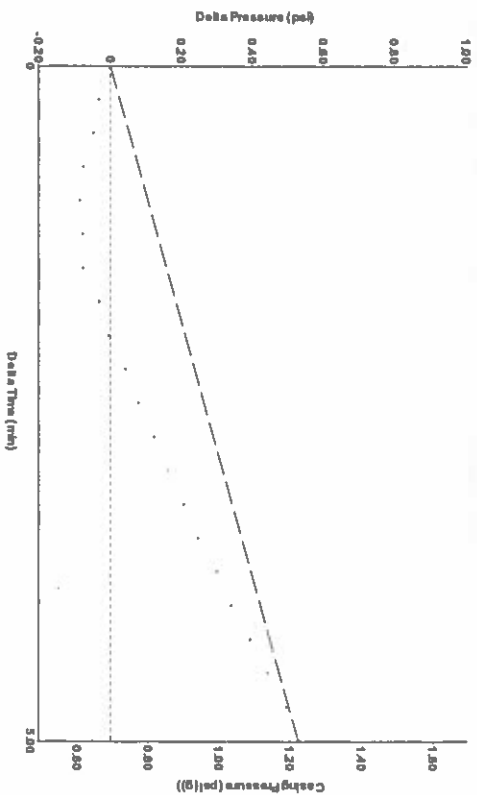
Group: SUBLETTE Well: Myers A-2 (acquired on: 12/10/18 13:53:57)

Production	Potential	Casing Pressure	Producing
Oil - - *	BBL/D - - *	0.7 psi (g)	Annular Gas Flow 13 Mscf/D
Water - - *	BBL/D - - *	Casing Pressure Buildup 0.5 psi	% Liquid 65 %
Gas - - *	Mscf/D - - *	5.00 min	
JPR Method PBHP/SBHP	Vogel - - *	Gas/Liquid Interface Pressure 1.5 psi (g)	
Production Efficiency 0.0		Liquid Level Depth 2249.46 ft	
Oil 40 deg API		Pump Intake Depth 2654.00 ft	
Water 1.05 Sp.Gr. 1120		Formation Depth 2653.00 ft	
Gas 0.70 Sp.Gr. AIR			
Acoustic Velocity 1305.55 ft/s			
Formation Submergence			
Total Gaseous Liquid Column HIT (TVVD) 405 ft			
Equivalent Gas Free Liquid HIT (TVVD) 264 ft			
Acoustic Test			



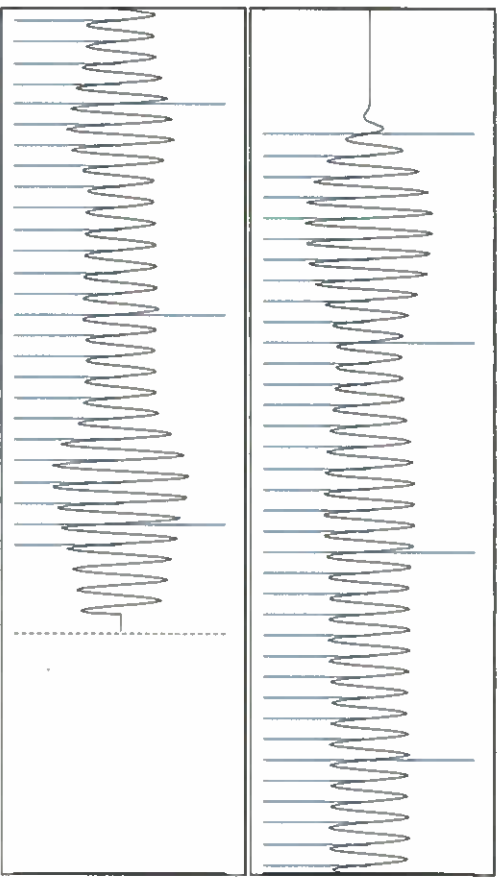
Pump Intake 90.8 psi (g)
Producing BHP 90.4 psi (g)
Static BHP - - * psi (g)

Group: SUBLETTE Well: Myers A-2 (acquired on: 12/10/18 13:53:57)



Change in Pressure 0.53 psi
Change in Time 5.00 min
PTT 14679
Range 0 - ? psi

Group: SUBLETTE Well: Myers A-2 (acquired on: 12/10/18 13:53:57)



Acoustic Velocity 1305.55 ft/s
Joints Per Second 20.664 JTS/sec
Depth to liquid level 2249.46 ft
Automatic Collar Count Yes

Joints counted 61
Joints to liquid level 71.208
Filler Width 18.5339
Time to 1st Collar 0.288

STATE OF KANSAS

CORPORATION COMMISSION
CONSERVATION DIVISION
DISTRICT No. 1
210 E. FRONTVIEW, SUITE A
DODGE CITY, KS 67801



PHONE: 620-682-7933
<http://kcc.ks.gov/>

GOVERNOR JEFF COLYER, M.D.

SHARI FEIST ALBRECHT, CHAIR | JAY SCOTT EMLER, COMMISSIONER | DWIGHT D. KEEN, COMMISSIONER

December 18, 2018

Katherine McClurkan
Merit Energy Company, LLC
13727 oel Road, Suite 1200
Dallas, TX 75240

Re: Temporary Abandonment
API 15-081-21091-00-00
Myers A 2
SW/4 Sec.35-30S-32W
Haskell County, Kansas

Dear Katherine McClurkan:

"Your temporary abandonment (TA) application for the well listed above has been approved. In accordance with K.A.R. 82-3-111 the TA status of this well will expire 12/18/2019.

- * If you return this well to service or plug it, please notify the District Office.
- * If you sell this well you are required to file a Transfer of Operator form, T-1.
- * If the well will remain temporarily abandoned, you must submit a new TA application, CP-111, before 12/18/2019.

You may contact me at the number above if you have questions.

Very truly yours,

Michael Maier"