

KANSAS CORPORATION COMMISSION
OIL & GAS CONSERVATION DIVISION

TEMPORARY ABANDONMENT WELL APPLICATION

OPERATOR: License#
Name:
Address 1:
Address 2:
City: State: Zip:
Contact Person:
Phone:
Contact Person Email:
Field Contact Person:
Field Contact Person Phone:

API No. 15-
Spot Description:
Sec. Twp. S. R.
GPS Location: Lat: Long:
Datum: NAD27 NAD83 WGS84
County: Elevation:
Lease Name: Well #:
Well Type: Oil Gas OG WSW Other:
SWD Permit #: ENHR Permit #:
Gas Storage Permit #:
Spud Date: Date Shut-In:

Table with 7 columns: Conductor, Surface, Production, Intermediate, Liner, Tubing. Rows include Size, Setting Depth, Amount of Cement, Top of Cement, Bottom of Cement.

Casing Fluid Level from Surface: How Determined? Date:
Casing Squeeze(s): to w / sacks of cement, to w / sacks of cement. Date:
Do you have a valid Oil & Gas Lease? Yes No
Depth and Type: Junk in Hole at Tools in Hole at Casing Leaks: Yes No Depth of casing leak(s):
Type Completion: ALT. I ALT. II Depth of: DV Tool: w / sacks of cement Port Collar: w / sack of cement
Packer Type: Size: Inch Set at: Feet
Total Depth: Plug Back Depth: Plug Back Method:

Geological Data:

Table with 4 columns: Formation Name, Formation Top, Formation Base, Completion Information. Rows 1 and 2.

UNDER PENALTY OF PERJURY I HEREBY ATTEST THAT THE INFORMATION CONTAINED HEREIN IS TRUE AND CORRECT TO THE BEST OF MY KNOWLEDGE

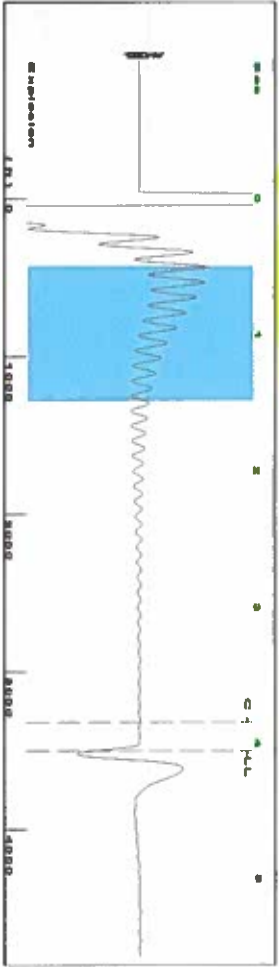
Submitted Electronically

Do NOT Write in This Space - KCC USE ONLY
Date Tested: Results: Date Plugged: Date Repaired: Date Put Back in Service:
Review Completed by: Comments:
TA Approved: Yes Denied Date:

Mail to the Appropriate KCC Conservation Office:

Table with 3 columns: District Office #, Address, Phone. Rows 1-4.

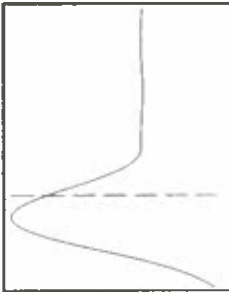
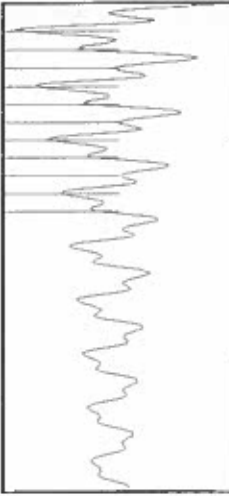
Group: Wiggins Well: Wiggins 12-12 (acquired on: 11/05/18 14:18:38)



Filter Type High Pass Automatic Collar Count Yes  
 Manual Acoustic Velot 1727.52 ft/s Manual JTS/sec 27.248

Time 4.054 sec  
 Joints 110.482 J/s  
 Depth 3502.27 ft

0.5 to 1.5 (Sec)



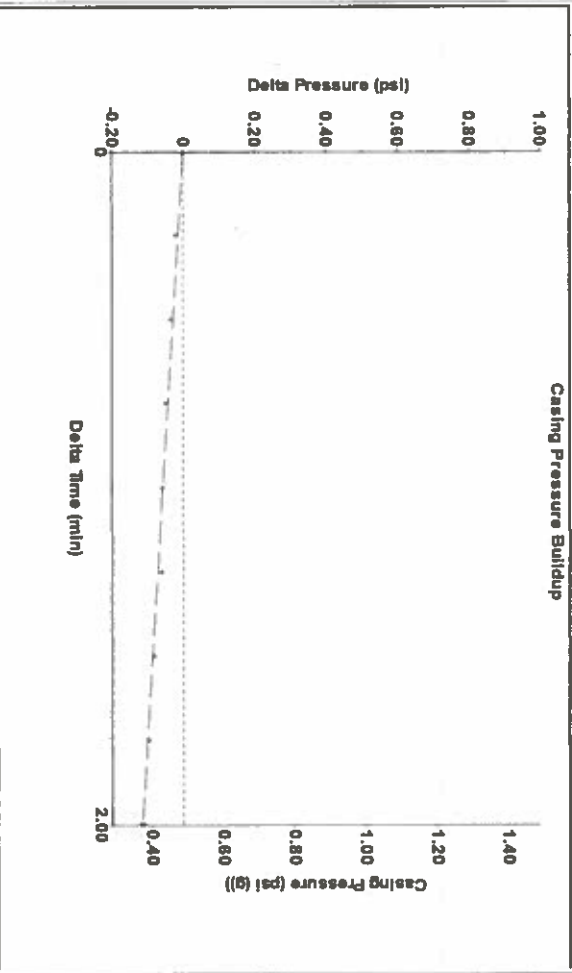
Analysis Method: Automatic

Group: Wiggins Well: Wiggins 12-12 (acquired on: 11/05/18 14:18:38)

Production Current	Potential	Casing Pressure	Static
Oil - -	- -	0.5 psi (g)	Oil Column Height
Water - -	- -	Casing Pressure Buildup -0.1 psi	MD 0 ft
Gas - -	- -	2.00 min	
IPR Method PBHP/SBHP	Vogel - -	Gas/Liquid Interface Pressure 1.5 psi (g)	
Production Efficiency	0.0		
Oil 40 deg API		Liquid Level Depth 3502.27 ft	Water Column Height MD 3362 ft
Water 1.05 Sp Gr H2O		Tubing Intake Depth 6864.00 ft	
Gas 0.55 Sp Gr AIR		Formation Depth 6864.00 ft	
Acoustic Velocity	1727.81 ft/s		Static BHP 1529.9 psi (g)

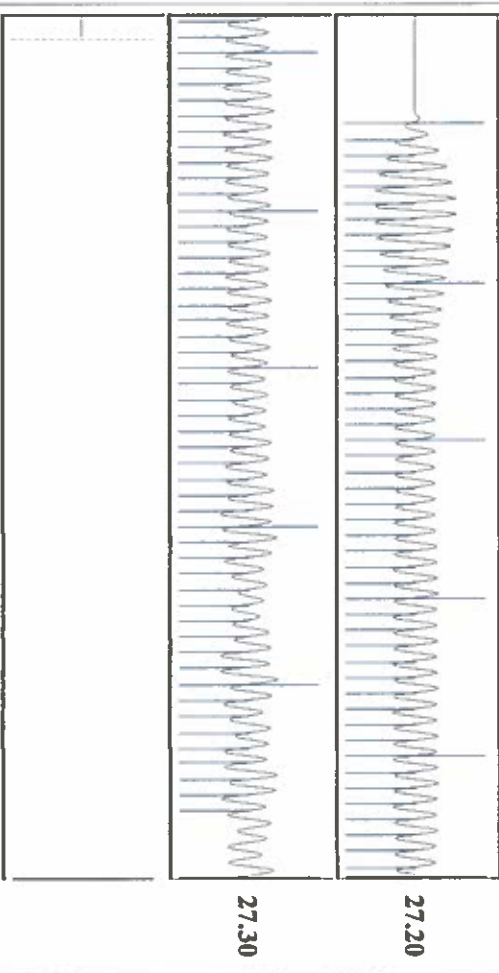


Group: Wiggins Well: Wiggins 12-12 (acquired on: 11/05/18 14:18:38)



Change in Pressure -0.12 psi PT11249 Range  
 Change in Time 2.00 min 0 - 2 psi

Group: Wiggins Well: Wiggins 12-12 (acquired on: 11/05/18 14:18:38)



Acoustic Velocity	1727.81 ft/s	Joints counted	98
Joints Per Second	27.2525 Jts/sec	Joints to liquid level	110.482
Depth to liquid level	3502.27 ft	Filter Width	25.248
Automatic Collar Count	Yes	Time to 1st Collar	3.844

*Spot @ 300ft SR.*

# STATE OF KANSAS

CORPORATION COMMISSION  
CONSERVATION DIVISION  
DISTRICT No. 1  
210 E. FRONTVIEW, SUITE A  
DODGE CITY, KS 67801



PHONE: 620-682-7933  
<http://kcc.ks.gov/>

GOVERNOR JEFF COLYER, M.D.

SHARI FEIST ALBRECHT, CHAIR | JAY SCOTT EMLER, COMMISSIONER | DWIGHT D. KEEN, COMMISSIONER

December 07, 2018

Katherine McClurkan  
Merit Energy Company, LLC  
13727 Noel Road, Suite 1200  
Dallas, TX 75240

Re: Temporary Abandonment  
API 15-189-22802-00-00  
Wiggains 12 12  
SE/4 Sec.12-35S-36W  
Stevens County, Kansas

Dear Katherine McClurkan:

"Your temporary abandonment (TA) application for the well listed above has been approved. In accordance with K.A.R. 82-3-111 the TA status of this well will expire 12/07/2019.

- \* If you return this well to service or plug it, please notify the District Office.
- \* If you sell this well you are required to file a Transfer of Operator form, T-1.
- \* If the well will remain temporarily abandoned, you must submit a new TA application, CP-111, before 12/07/2019.

You may contact me at the number above if you have questions.

Very truly yours,

Michael Maier"