

KANSAS CORPORATION COMMISSION
OIL & GAS CONSERVATION DIVISION

TEMPORARY ABANDONMENT WELL APPLICATION

OPERATOR: License# \_\_\_\_\_
Name: \_\_\_\_\_
Address 1: \_\_\_\_\_
Address 2: \_\_\_\_\_
City: \_\_\_\_\_ State: \_\_\_\_\_ Zip: \_\_\_\_\_ + \_\_\_\_\_
Contact Person: \_\_\_\_\_
Phone:( \_\_\_\_\_ ) \_\_\_\_\_
Contact Person Email: \_\_\_\_\_
Field Contact Person: \_\_\_\_\_
Field Contact Person Phone: ( \_\_\_\_\_ ) \_\_\_\_\_

API No. 15- \_\_\_\_\_
Spot Description: \_\_\_\_\_
- - - - - Sec. \_\_\_\_\_ Twp. \_\_\_\_\_ S. R. \_\_\_\_\_  E  W
\_\_\_\_\_ feet from  N /  S Line of Section
\_\_\_\_\_ feet from  E /  W Line of Section
GPS Location: Lat: \_\_\_\_\_, Long: \_\_\_\_\_
Datum:  NAD27  NAD83  WGS84
County: \_\_\_\_\_ Elevation: \_\_\_\_\_  GL  KB
Lease Name: \_\_\_\_\_ Well #: \_\_\_\_\_
Well Type: (check one)  Oil  Gas  OG  WSW  Other: \_\_\_\_\_
 SWD Permit #: \_\_\_\_\_  ENHR Permit #: \_\_\_\_\_
 Gas Storage Permit #: \_\_\_\_\_
Spud Date: \_\_\_\_\_ Date Shut-In: \_\_\_\_\_

Table with 7 columns: Conductor, Surface, Production, Intermediate, Liner, Tubing. Rows include Size, Setting Depth, Amount of Cement, Top of Cement, Bottom of Cement.

Casing Fluid Level from Surface: \_\_\_\_\_ How Determined? \_\_\_\_\_ Date: \_\_\_\_\_
Casing Squeeze(s): \_\_\_\_\_ to \_\_\_\_\_ w / \_\_\_\_\_ sacks of cement, \_\_\_\_\_ to \_\_\_\_\_ w / \_\_\_\_\_ sacks of cement. Date: \_\_\_\_\_
Do you have a valid Oil & Gas Lease?  Yes  No
Depth and Type:  Junk in Hole at \_\_\_\_\_  Tools in Hole at \_\_\_\_\_ Casing Leaks:  Yes  No Depth of casing leak(s): \_\_\_\_\_
Type Completion:  ALT. I  ALT. II Depth of:  DV Tool: \_\_\_\_\_ w / \_\_\_\_\_ sacks of cement  Port Collar: \_\_\_\_\_ w / \_\_\_\_\_ sack of cement
Packer Type: \_\_\_\_\_ Size: \_\_\_\_\_ Inch Set at: \_\_\_\_\_ Feet
Total Depth: \_\_\_\_\_ Plug Back Depth: \_\_\_\_\_ Plug Back Method: \_\_\_\_\_

Geological Date:

Table with 2 columns: Formation Name, Completion Information. Rows 1 and 2 for formation details.

UNDER PENALTY OF PERJURY I HEREBY ATTEST THAT THE INFORMATION CONTAINED HEREIN IS TRUE AND CORRECT TO THE BEST OF MY KNOWLEDGE

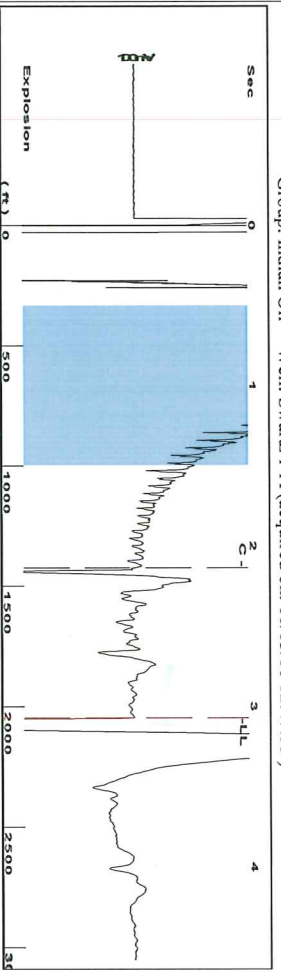
Submitted Electronically

Do NOT Write in This Space - KCC USE ONLY
Date Tested: \_\_\_\_\_ Results: \_\_\_\_\_ Date Plugged: \_\_\_\_\_ Date Repaired: \_\_\_\_\_ Date Put Back in Service: \_\_\_\_\_
Review Completed by: \_\_\_\_\_ Comments: \_\_\_\_\_
TA Approved:  Yes  Denied Date: \_\_\_\_\_

Mail to the Appropriate KCC Conservation Office:

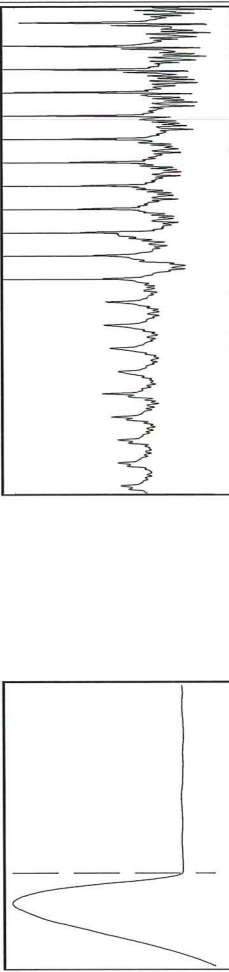
Table with 2 columns: Office Address, Phone. Rows for KCC District Office #1 through #4.

Group: Indian Oil Well: Swartz 1-A (acquired on: 11/13/18 12:47:53)



Filter Type High Pass Automatic Collar Count Yes  
Manual Acoustic Vel 1323.59 ft/s Manual JTS/sec 20.8768  
Time 3.073 sec  
Joints 64.5727 Jts  
Depth 2046.96 ft

[ 0.5 to 1.5 (Sec) ]



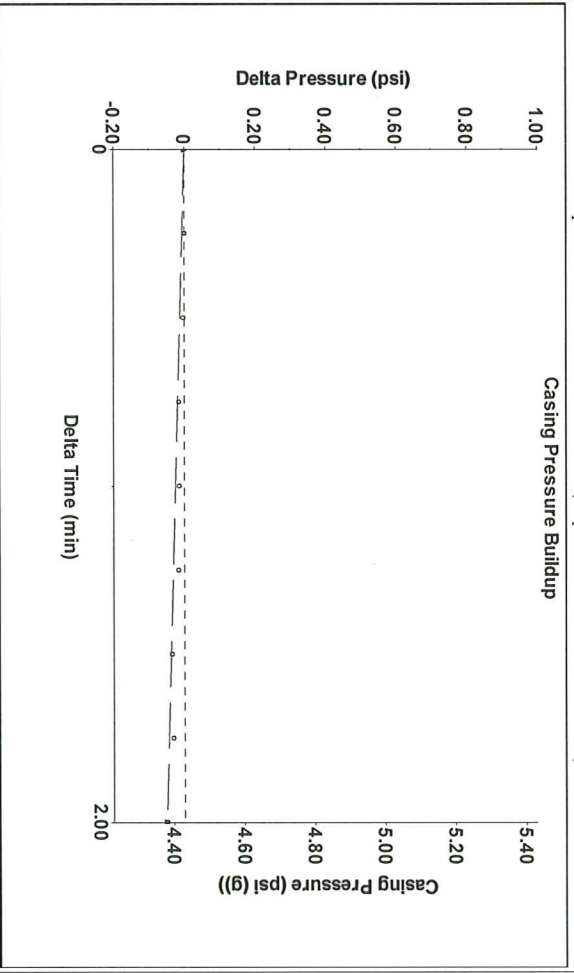
Analysis Method: Automatic

Group: Indian Oil Well: Swartz 1-A (acquired on: 11/13/18 12:47:53)

Production Current	Potential	Casing Pressure	Producing
Oil 0	-*- BBL/D	4.4 psi (g)	Pump Intake 669.1 psi (g)
Water 30	-*- BBL/D	Casing Pressure Buildup -0.050 psi	Producing BHP 668.7 psi (g)
Gas 5.0	-*- Mscf/D	2.00 min	Static BHP -*- psi (g)
IPR Method PBHP/SBHP	Vogel -*-	Gas/Liquid Interface Pressure 5.3 psi (g)	% Liquid 100 %
Production Efficiency	0.0	Liquid Level Depth 2046.96 ft	
Oil 40 deg API		Pump Intake Depth 3507.00 ft	
Water 1.05 Sp.Gr: H2O		Formation Depth 3506.00 ft	
Gas 0.67 Sp.Gr: AIR			
Acoustic Velocity 1332.22 ft/s			
Formation Submergence			
Total Gaseous Liquid Column HT (TVD) 1460 ft			
Equivalent Gas Free Liquid HT (TVD) 1460 ft			
Acoustic Test 11-12-18			

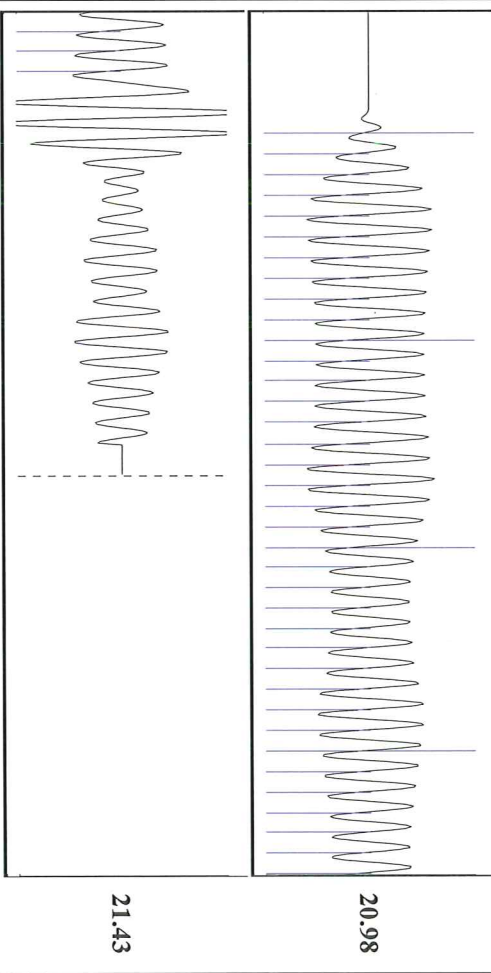


Group: Indian Oil Well: Swartz 1-A (acquired on: 11/13/18 12:47:53)



Change in Pressure -0.05 psi PT 15565  
Change in Time 2.00 min Range 0 - ? psi

Group: Indian Oil Well: Swartz 1-A (acquired on: 11/13/18 12:47:53)



Acoustic Velocity 1332.22 ft/s Joints counted 39  
Joints Per Second 21.0129 jts/sec Joints to liquid level 64.5727  
Depth to liquid level 2046.96 ft Filter Width 18.8768  
Automatic Collar Count Yes Time to 1st Collar 2.136

# STATE OF KANSAS

CORPORATION COMMISSION  
CONSERVATION DIVISION  
DISTRICT No. 1  
210 E. FRONTVIEW, SUITE A  
DODGE CITY, KS 67801



PHONE: 620-682-7933  
<http://kcc.ks.gov/>

GOVERNOR JEFF COLYER, M.D.

SHARI FEIST ALBRECHT, CHAIR | JAY SCOTT EMLER, COMMISSIONER | DWIGHT D. KEEN, COMMISSIONER

November 13, 2018

Anthony Farrar  
Indian Oil Co., Inc.  
2507 SE US HWY 160  
PO BOX 209  
MEDICINE LODGE, KS 67104-0209

Re: Temporary Abandonment  
API 15-007-21148-00-01  
SWARTZ 1  
NE/4 Sec.31-31S-11W  
Barber County, Kansas

Dear Anthony Farrar:

"Your temporary abandonment (TA) application for the well listed above has been approved. In accordance with K.A.R. 82-3-111 the TA status of this well will expire 11/13/2019.

- \* If you return this well to service or plug it, please notify the District Office.
- \* If you sell this well you are required to file a Transfer of Operator form, T-1.
- \* If the well will remain temporarily abandoned, you must submit a new TA application, CP-111, before 11/13/2019.

You may contact me at the number above if you have questions.

Very truly yours,

Michael Maier"