

KANSAS CORPORATION COMMISSION  
OIL & GAS CONSERVATION DIVISION

TEMPORARY ABANDONMENT WELL APPLICATION

All blanks must be complete

OPERATOR: License# \_\_\_\_\_  
 Name: \_\_\_\_\_  
 Address 1: \_\_\_\_\_  
 Address 2: \_\_\_\_\_  
 City: \_\_\_\_\_ State: \_\_\_\_\_ Zip: \_\_\_\_\_ + \_\_\_\_\_  
 Contact Person: \_\_\_\_\_  
 Phone: ( \_\_\_\_\_ ) \_\_\_\_\_  
 Contact Person Email: \_\_\_\_\_  
 Field Contact Person: \_\_\_\_\_  
 Field Contact Person Phone: ( \_\_\_\_\_ ) \_\_\_\_\_

API No. 15- \_\_\_\_\_  
 Spot Description: \_\_\_\_\_  
 \_\_\_\_\_ - \_\_\_\_\_ - \_\_\_\_\_ - \_\_\_\_\_ Sec. \_\_\_\_\_ Twp. \_\_\_\_\_ S. R. \_\_\_\_\_  E  W  
 \_\_\_\_\_ feet from  N /  S Line of Section  
 \_\_\_\_\_ feet from  E /  W Line of Section  
 GPS Location: Lat: \_\_\_\_\_, Long: \_\_\_\_\_  
(e.g. xx.xxxxx) (e.g. -xxx.xxxxx)  
 Datum:  NAD27  NAD83  WGS84  
 County: \_\_\_\_\_ Elevation: \_\_\_\_\_  GL  KB  
 Lease Name: \_\_\_\_\_ Well #: \_\_\_\_\_  
 Well Type: (check one)  Oil  Gas  OG  WSW  Other: \_\_\_\_\_  
 SWD Permit #: \_\_\_\_\_  ENHR Permit #: \_\_\_\_\_  
 Gas Storage Permit #: \_\_\_\_\_  
 Spud Date: \_\_\_\_\_ Date Shut-In: \_\_\_\_\_

|                  | Conductor | Surface | Production | Intermediate | Liner | Tubing |
|------------------|-----------|---------|------------|--------------|-------|--------|
| Size             |           |         |            |              |       |        |
| Setting Depth    |           |         |            |              |       |        |
| Amount of Cement |           |         |            |              |       |        |
| Top of Cement    |           |         |            |              |       |        |
| Bottom of Cement |           |         |            |              |       |        |

Casing Fluid Level from Surface: \_\_\_\_\_ How Determined? \_\_\_\_\_ Date: \_\_\_\_\_  
 Casing Squeeze(s): \_\_\_\_\_ to \_\_\_\_\_ w / \_\_\_\_\_ sacks of cement, \_\_\_\_\_ to \_\_\_\_\_ w / \_\_\_\_\_ sacks of cement. Date: \_\_\_\_\_  
(top) (bottom) (top) (bottom)  
 Do you have a valid Oil & Gas Lease?  Yes  No  
 Depth and Type:  Junk in Hole at \_\_\_\_\_  Tools in Hole at \_\_\_\_\_ Casing Leaks:  Yes  No Depth of casing leak(s): \_\_\_\_\_  
(depth) (depth)  
 Type Completion:  ALT. I  ALT. II Depth of:  DV Tool: \_\_\_\_\_ w / \_\_\_\_\_ sacks of cement  Port Collar: \_\_\_\_\_ w / \_\_\_\_\_ sack of cement  
(depth) (depth)  
 Packer Type: \_\_\_\_\_ Size: \_\_\_\_\_ Inch Set at: \_\_\_\_\_ Feet  
 Total Depth: \_\_\_\_\_ Plug Back Depth: \_\_\_\_\_ Plug Back Method: \_\_\_\_\_

**Geological Data:**

| Formation Name | Formation Top | Formation Base | Completion Information   |
|----------------|---------------|----------------|--|
| 1. _____       | At: _____     | to _____ Feet  | Perforation Interval _____ to _____ Feet or Open Hole Interval _____ to _____ Feet |
| 2. _____       | At: _____     | to _____ Feet  | Perforation Interval _____ to _____ Feet or Open Hole Interval _____ to _____ Feet |

UNDER PENALTY OF PERJURY I HEREBY ATTEST THAT THE INFORMATION CONTAINED HEREIN IS TRUE AND CORRECT TO THE BEST OF MY KNOWLEDGE

Submitted Electronically

|   |  |                |                     |                      |                                 |
|---|--|----------------|---------------------|----------------------|---------------------------------|
| <b>Do NOT Write in This Space - KCC USE ONLY</b>                                      | Date Tested: _____                         | Results: _____ | Date Plugged: _____ | Date Repaired: _____ | Date Put Back in Service: _____ |
|   | Review Completed by: _____ Comments: _____ |                |                     |                      |                                 |
| TA Approved: <input type="checkbox"/> Yes <input type="checkbox"/> Denied Date: _____ |  |                |                     |                      |                                 |

Mail to the Appropriate KCC Conservation Office:

|  |  |                    |
|--|--|--------------------|
|  | KCC District Office #1 - 210 E. Frontview, Suite A, Dodge City, KS 67801               | Phone 620.682.7933 |
|  | KCC District Office #2 - 3450 N. Rock Road, Building 600, Suite 601, Wichita, KS 67226 | Phone 316.337.7400 |
|  | KCC District Office #3 - 137 E. 21st St., Chanute, KS 66720                            | Phone 620.902.6450 |
|  | KCC District Office #4 - 2301 E. 13th Street, Hays, KS 67601-2651                      | Phone 785.261.6250 |

### General

Well ID 127471  
 Well Theis W 4-8  
 Company Sandridge  
 Operator - \* -  
 Lease Name Theis W 4-8  
 Elevation 2083.00 ft  
 Production Method Other  
 Dataset Description

Comment

### Surface Unit

Manufacturer - \* -  
 Unit Class Conventional  
 Unit API Number - \* -  
 Measured Stroke Length 100.000 in  
 Rotation CW  
 Counter Balance Effect (Weights Level) - \* - Klb  
 Weight Of Counter Weights 2000 lb

### Prime Mover

Motor Type Electric  
 Rated HP - \* - HP  
 Run Time 24 hr/day  
 MFG/Comment - \* -

### Electric Motor Parameters

Rated Full Load AMPS - \* -  
 Rated Full Load RPM - \* -  
 Synchronous RPM 1200  
 Voltage - \* -  
 Hertz 60  
 Phase 3  
 Power Consumption 5  
 Power Demand 8 \$/KW

### Tubulars

Tubing OD 2.375 in  
 Casing OD 4.500 in  
 Average Joint Length 31.700 ft  
 Anchor Depth - \* - ft  
 Kelly Bushing 10.00 ft

### Pump

Plunger Diameter - \* - in  
 Pump Intake Depth 5937.00 ft  
 \*\*Total Rod Length < Pump Depth

### Polished Rod

Polished Rod Diameter - \* - in

### Rod String

|              | Top Taper | Taper 2 | Taper 3 | Taper 4 | Taper 5 | Taper 6  |
|--------------|-----------|---------|---------|---------|---------|----------|
| Rod Type     | - * -     | - * -   | - * -   | - * -   | - * -   | - * -    |
| Rod Length   | - * -     | - * -   | - * -   | - * -   | - * -   | - * - ft |
| Rod Diameter | - * -     | - * -   | - * -   | - * -   | - * -   | - * - in |
| Rod Weight   | 0.0       | 0.0     | 0.0     | 0.0     | 0.0     | 0.0 lb   |

Total Rod Length 0  
 Total Rod Weight 0.00

Damp Up 0.05  
 Damp Down 0.05

### Conditions

#### Pressure

Static BHP 416.4 psi (g)  
 Static BHP Method Acoustic  
 Static BHP Date 10/30/2018

Producing BHP 356.7 psi (g)  
 Producing BHP Method Acoustic  
 Producing BHP Date 11/04/2016  
 Formation Depth 6200.00 ft

#### Surface Producing Pressures

Tubing Pressure - \* - psi (g)  
 Casing Pressure 340.4 psi (g)

#### Casing Pressure Buildup

Change in Pressure 0.4 psi  
 Over Change in Time 0.75 min

#### Production

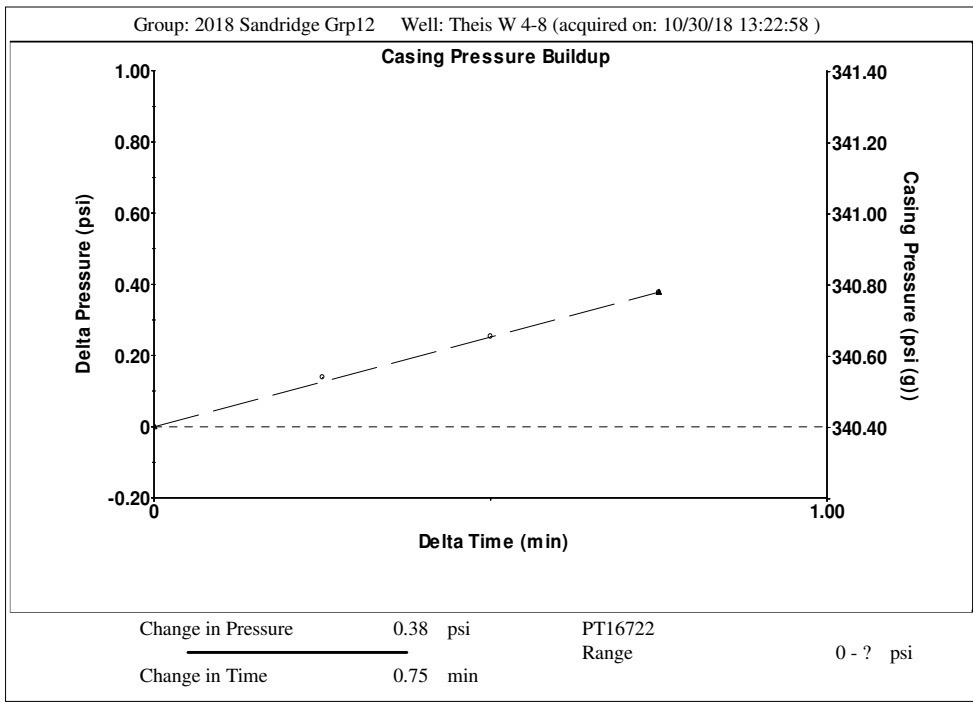
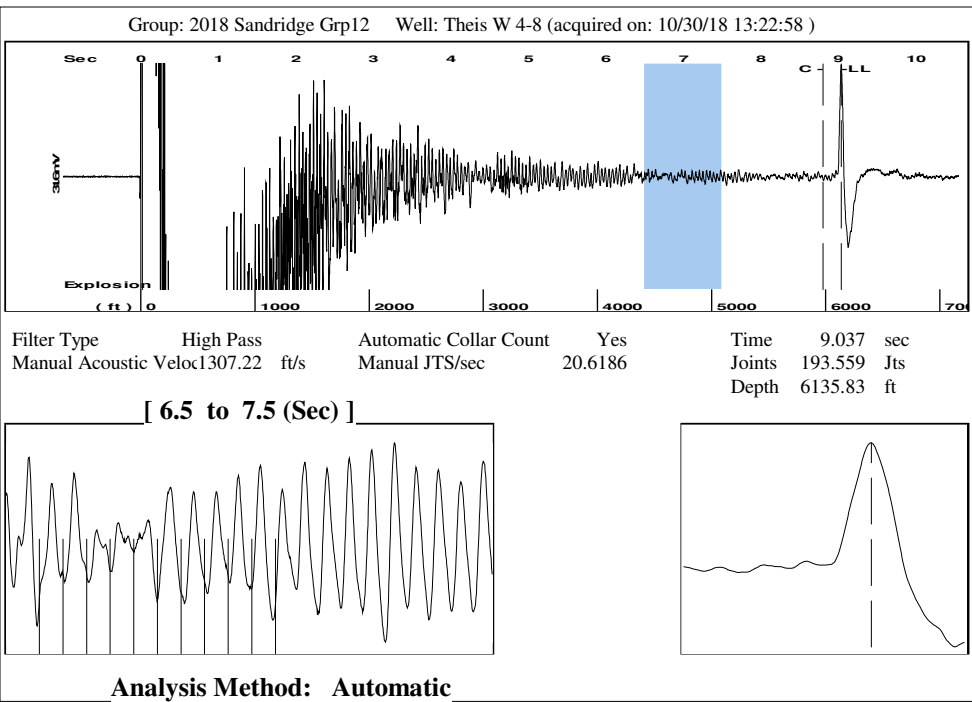
Oil Production 0 BBL/D  
 Water Production 1 BBL/D  
 Gas Production - \* - Mscf/D  
 Production Date 10/31/2016

#### Temperatures

Surface Temperature 70 deg F  
 Bottomhole Temperature 150 deg F

#### Fluid Properties

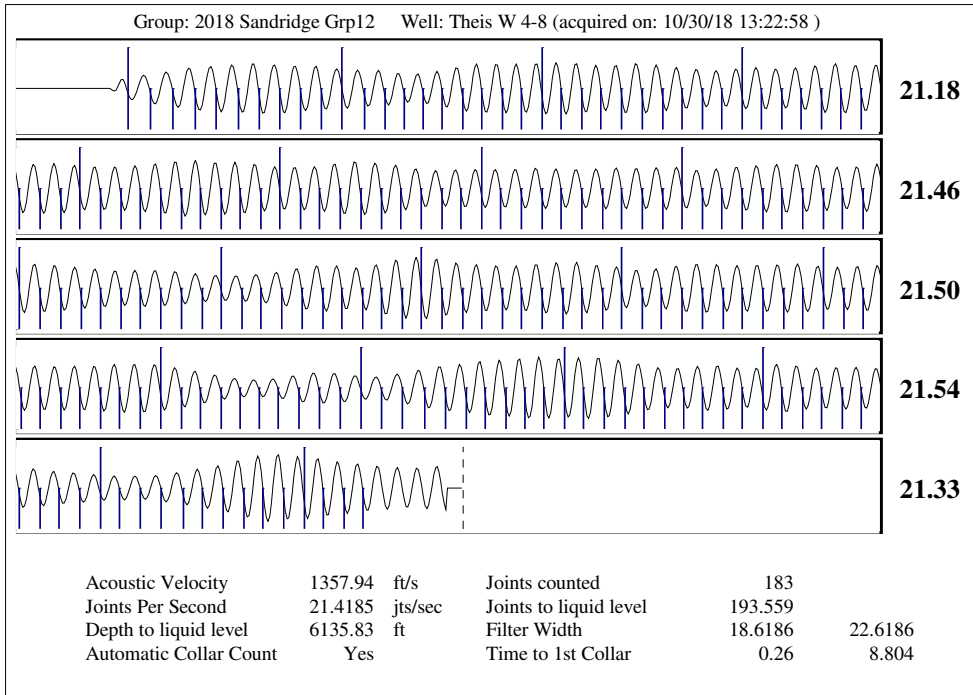
Oil API 40 deg.API  
 Water Specific Gravity 1.05 Sp.Gr.H2O



Group: 2018 Sandridge Grp12 Well: Theis W 4-8 (acquired on: 10/30/18 13:22:58)

|                       |                  |                               |                            |
|-----------------------|------------------|-------------------------------|----------------------------|
| <b>Production</b>     | <b>Potential</b> | <b>Casing Pressure</b>        |                            |
| Current               | - * - BBL/D      | 340.4 psi (g)                 |                            |
| Oil 0                 | - * - BBL/D      | Casing Pressure Buildup       |                            |
| Water 1               | - * - Mscf/D     | 0.4 psi                       |                            |
| Gas - * -             |                  | 0.75 min                      | <b>Oil Column Height</b>   |
|                       |                  | Gas/Liquid Interface Pressure | MD 0 ft                    |
| IPR Method            | Vogel            | 391.8 psi (g)                 | <b>Water Column Height</b> |
| PBHP/SBHP             | - * -            | Liquid Level Depth            | MD 54 ft                   |
| Production Efficiency | 0.0              | 6135.83 ft                    | <b>Static BHP</b>          |
|                       |                  | Tubing Intake Depth           | 416.4 psi (g)              |
| Oil 40 deg.API        |                  | 5937.00 ft                    |                            |
| Water 1.05 Sp.Gr.H2O  |                  | Formation Depth               |                            |
| Gas 0.63 Sp.Gr.AIR    |                  | 6200.00 ft                    |                            |
| Acoustic Velocity     | 1357.94 ft/s     |                               |                            |

Theis W 4-8



# STATE OF KANSAS

CORPORATION COMMISSION  
CONSERVATION DIVISION  
DISTRICT No. 1  
210 E. FRONTVIEW, SUITE A  
DODGE CITY, KS 67801



PHONE: 620-682-7933  
<http://kcc.ks.gov/>

GOVERNOR JEFF COLYER, M.D.

SHARI FEIST ALBRECHT, CHAIR | JAY SCOTT EMLER, COMMISSIONER | DWIGHT D. KEEN, COMMISSIONER

December 07, 2018

Laci Bevans  
SandRidge Exploration and Production LLC  
123 ROBERT S. KERR AVE  
OKLAHOMA CITY, OK 73102-6406

Re: Temporary Abandonment  
API 15-025-21188-00-00  
THEIS W. 4-8  
SW/4 Sec.08-35S-25W  
Clark County, Kansas

Dear Laci Bevans:

"Your temporary abandonment (TA) application for the well listed above has been approved. In accordance with K.A.R. 82-3-111 the TA status of this well will expire 12/07/2019.

- \* If you return this well to service or plug it, please notify the District Office.
- \* If you sell this well you are required to file a Transfer of Operator form, T-1.
- \* If the well will remain temporarily abandoned, you must submit a new TA application, CP-111, before 12/07/2019.

You may contact me at the number above if you have questions.

Very truly yours,

Michael Maier"