

**Fall & Associates**  
 Stake and Elevation Service  
 P.O. Box 222  
 Pretty Prairie, KS. 67570  
 785-243-7506

Date 10-2-18

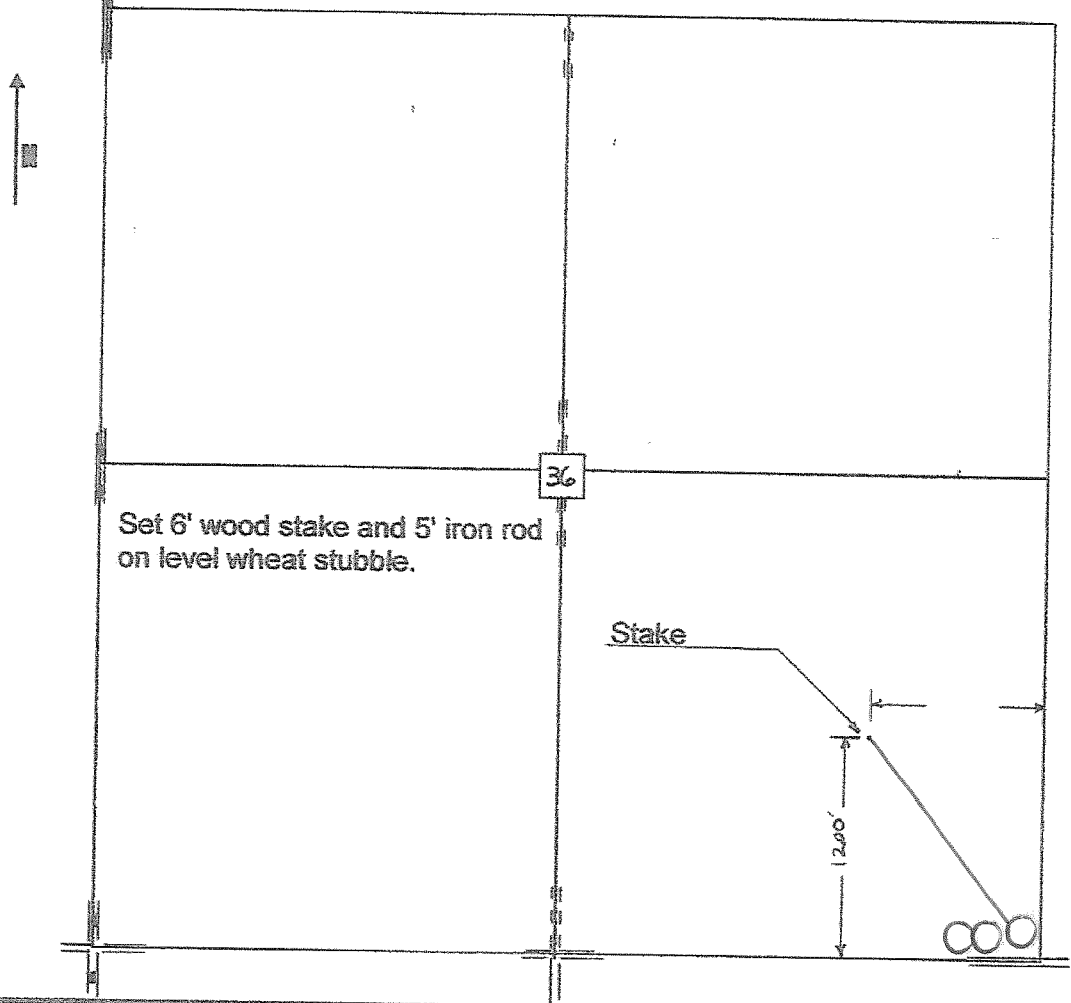
Invoice Number 0928181

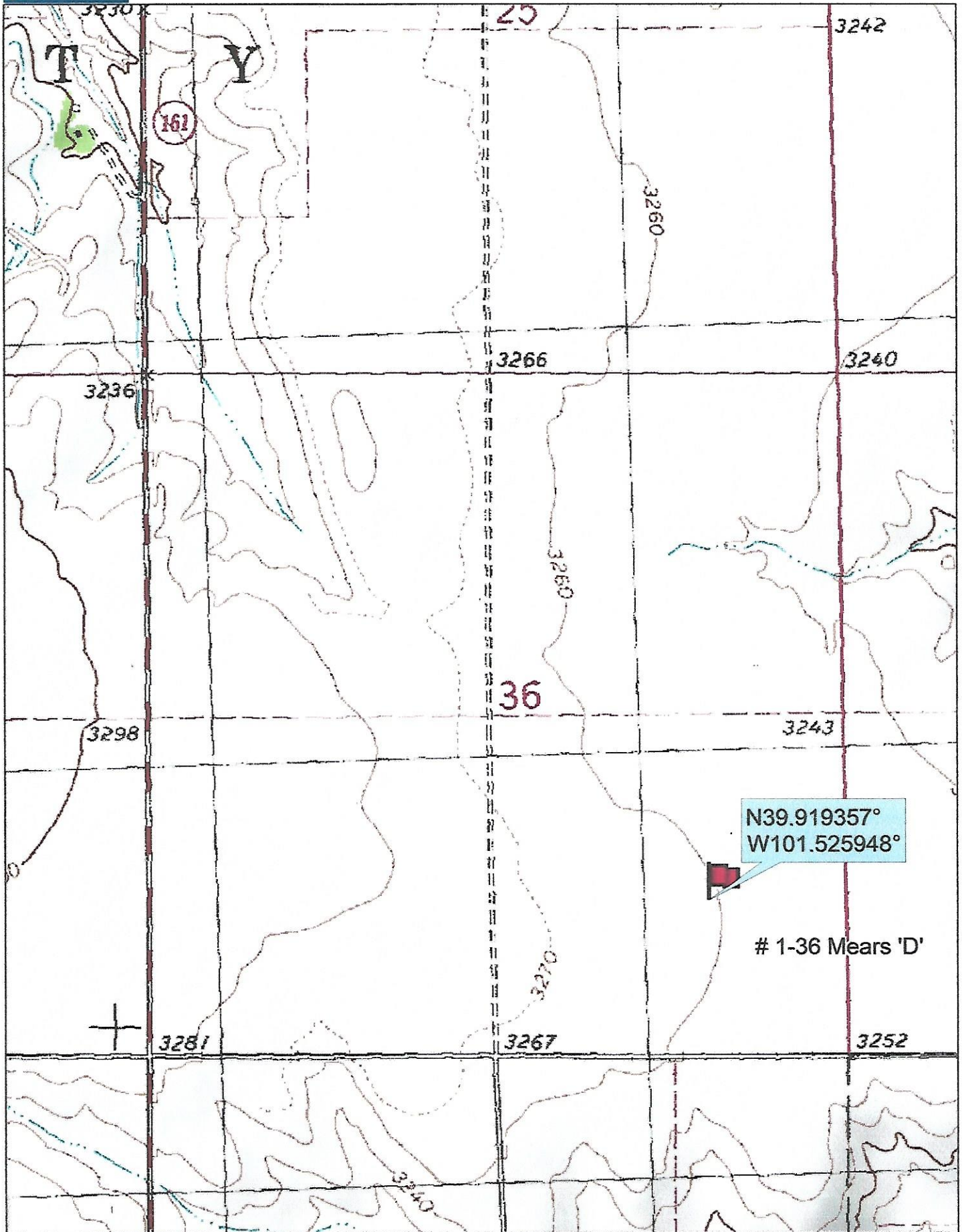
MURFIN DRILLING	1-36			Mears 'D'
Operator	Number			Farm Name
Cheyenne-KS	36	1s	38w	1200' FSL 990' FEL
County-State	S	T	R	Location

Murfin Drilling  
 250 N Water  
 Suite 300  
 Wichita, KS. 67202

Elevation 3259 Gr.  
 Ordered By: Shauna

Scale 1"=1000'





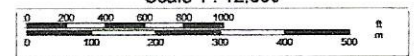
Data use subject to license.

© DeLorme. Topo North America™ 9.

www.delorme.com



Scale 1 : 12,000



1" = 1,000.0 ft

Data Zoom 13-1