

Ryan Davis

GEOLOGIST'S REPORT DRILLING TIME AND SAMPLE LOG

COMPANY Siroky Oil Management

LEASE Green Group 1-24

FIELD Wildcat

LOCATION 926' FSL & 569' FWL

SEC 24 TWSP 27S RGE 12 W

COUNTY Pratt STATE Kansas

CONTRACTOR Fossil Drilling Rig # 3

SPUD 6/4/18 COMP 6/13/18

RTD 4525' LTD 4526'

MUD UP 3400' TYPE MUD Chemical

SAMPLES SAVED FROM 2550' TO RTD

DRILLING TIME KEPT FROM 2550' TO RTD

SAMPLES EXAMINED FROM 3300' TO RTD

GEOLOGICAL SUPERVISION FROM 3300'

GEOLOGIST Ryan Davis

ELEVATIONS

KB 1809'

DF _____

GL 1797'

Measurements Are All
From Kelly Bushing

CASING

CONDUCTOR _____

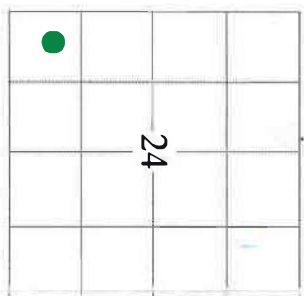
SURFACE 10-3/4" @ 325'

PRODUCTION 5.5" @ 4496'

ELECTRICAL SURVEYS

ELL
DIL, CND, MIC, SON

Formation	Sample Tops	E-log Tops	Struct. Pos.
Indian Caye	2605 (-796)	2604 (-795)	
topeka	3101 (-1292)	3095 (-1286)	
Lansing	3648 (-1839)	3644 (-1835)	
Stark	3908 (-2099)	3905 (-2096)	
BKC.	4007 (-2198)	4006 (-2197)	
Miss	4097 (-2288)	4090 (-2281)	
Viola	4303 (-2494)	4302 (-2493)	
Simp Sh	4375 (-2566)	4371 (-2562)	
Arbuckle	4471 (-2662)	4472 (-2663)	

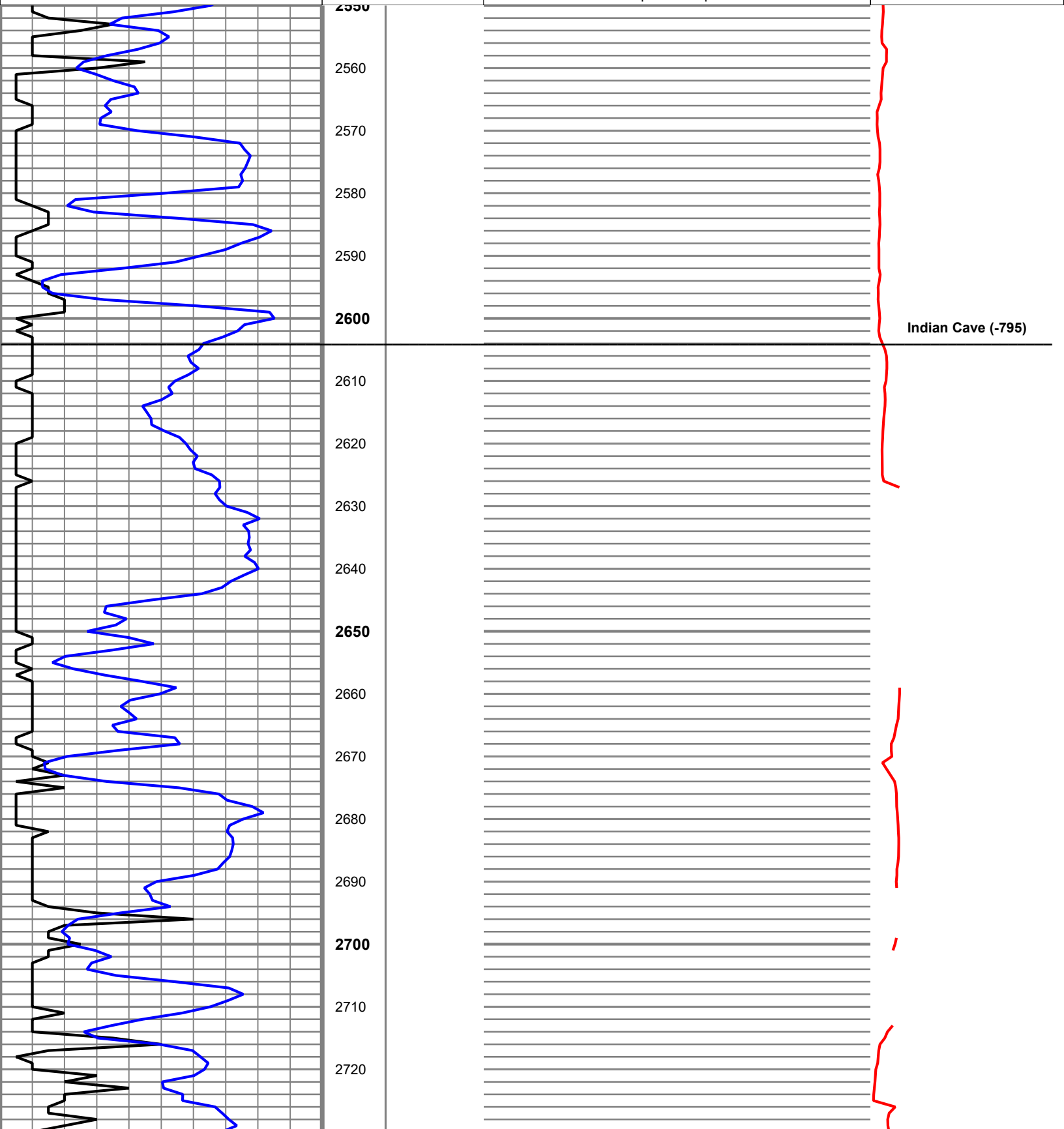
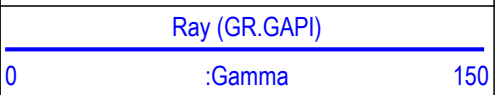
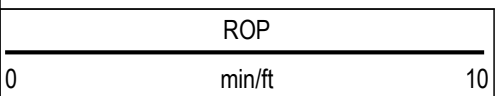


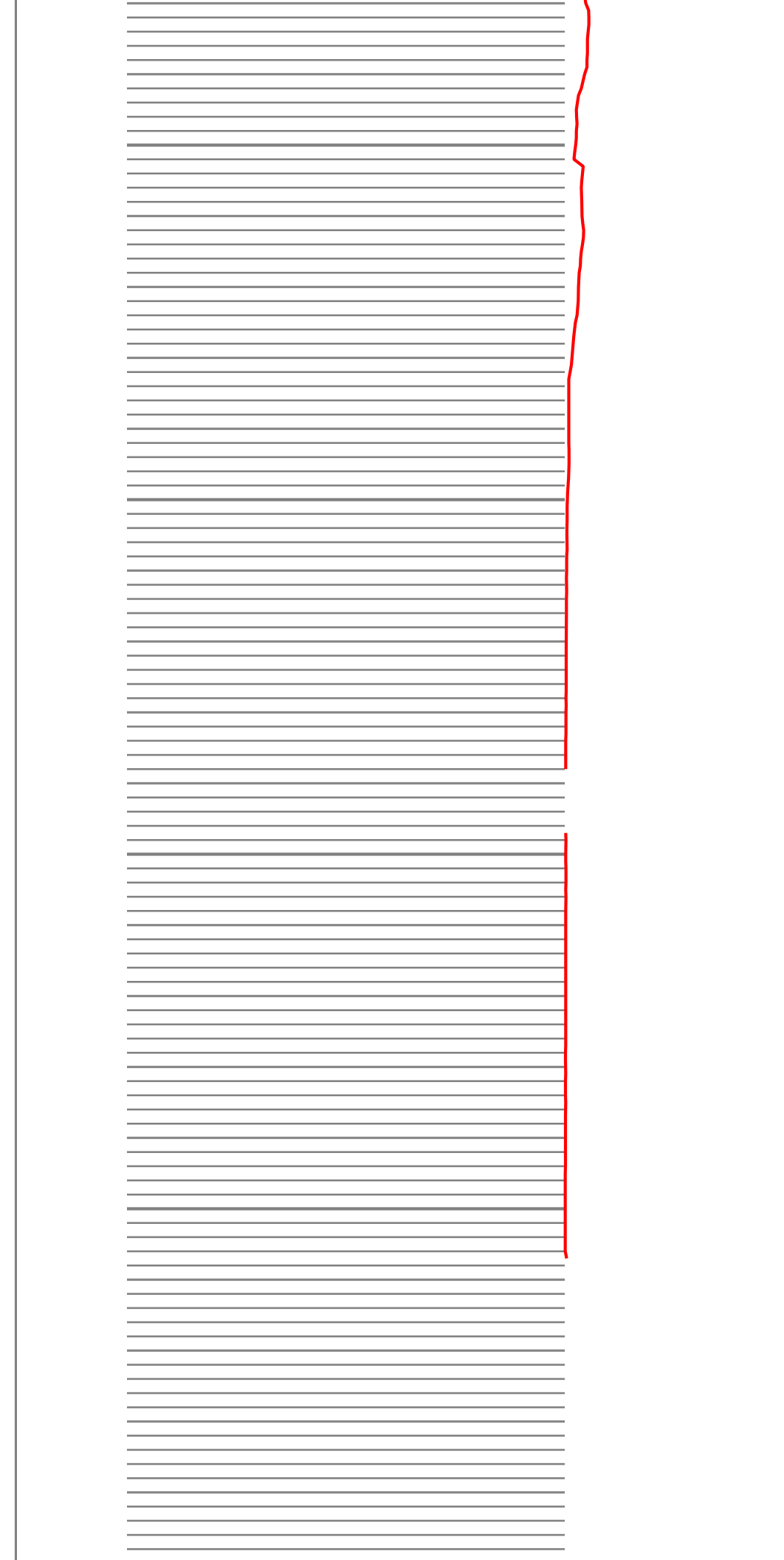
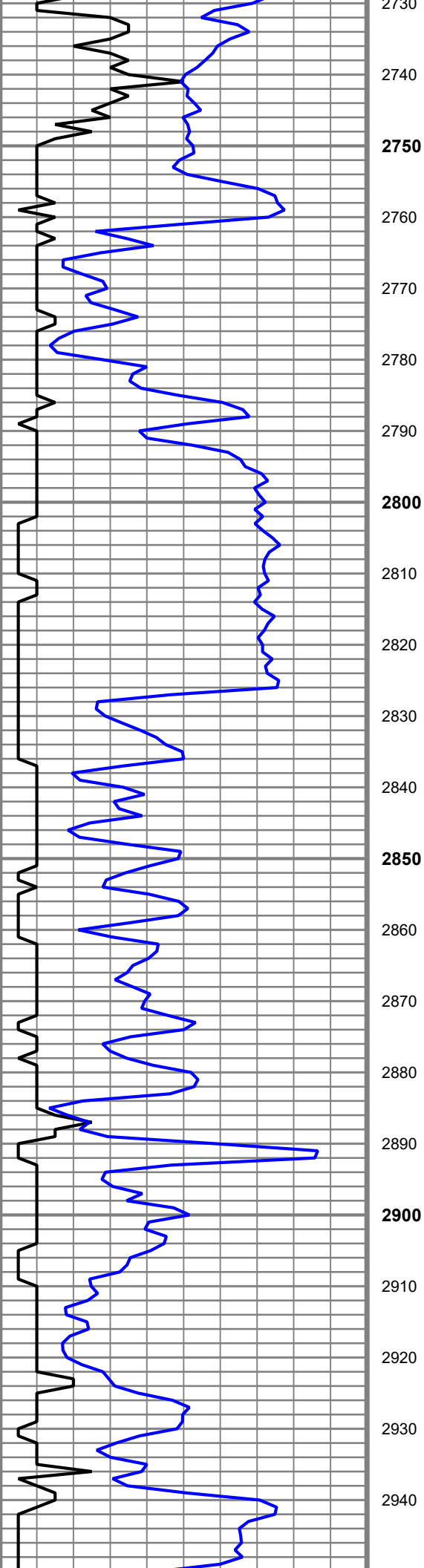
REMARKS The GG #1-24 will be further evaluated through 5.5" production casing.

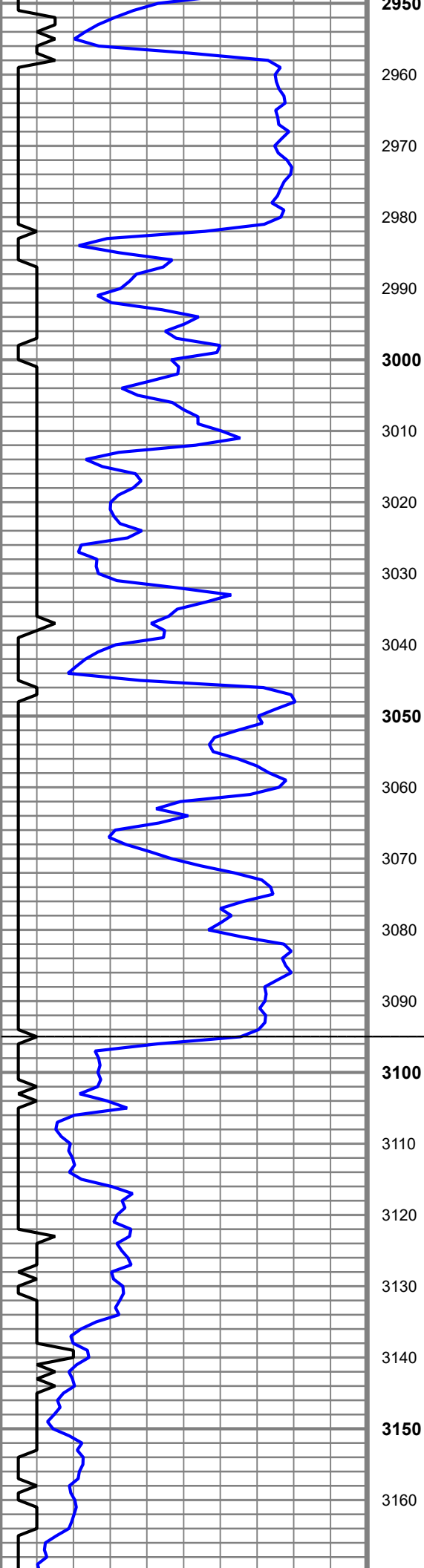
Respectfully Submitted,

Ryan Davis

ROP
 GAS
 GR.GAPI



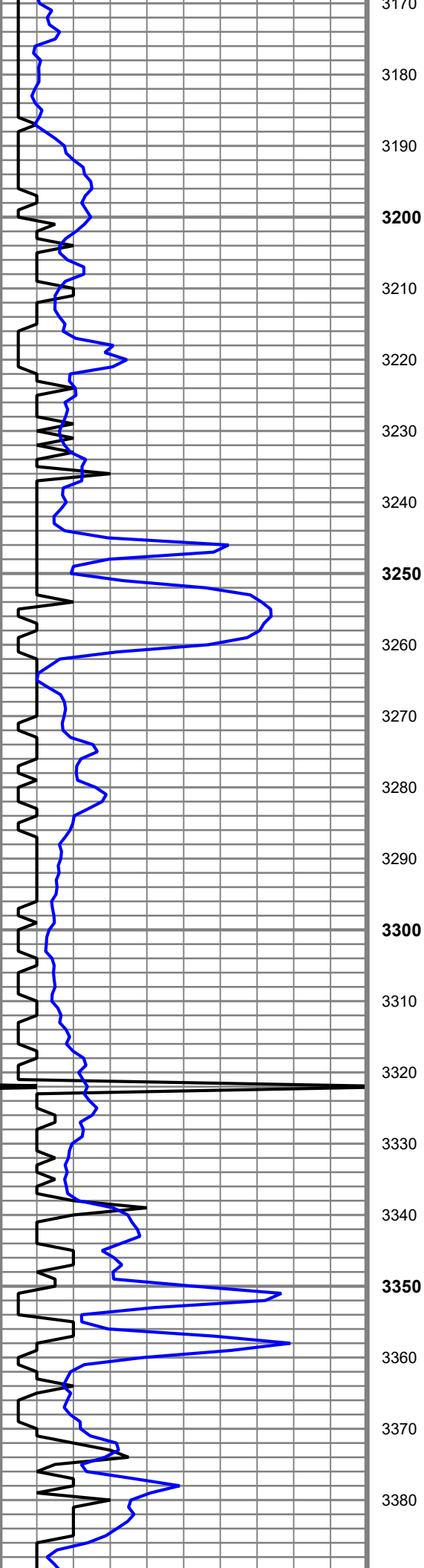




2950
2960
2970
2980
2990
3000
3010
3020
3030
3040
3050
3060
3070
3080
3090
3100
3110
3120
3130
3140
3150
3160

Topeka (-1286)





3170
3180
3190
3200
3210
3220
3230
3240
3250
3260
3270
3280
3290
3300
3310
3320
3330
3340
3350
3360
3370
3380

Ls., wh-crm, vf xln, fair p.p. Por, sli chlky, foss, sct vugs.

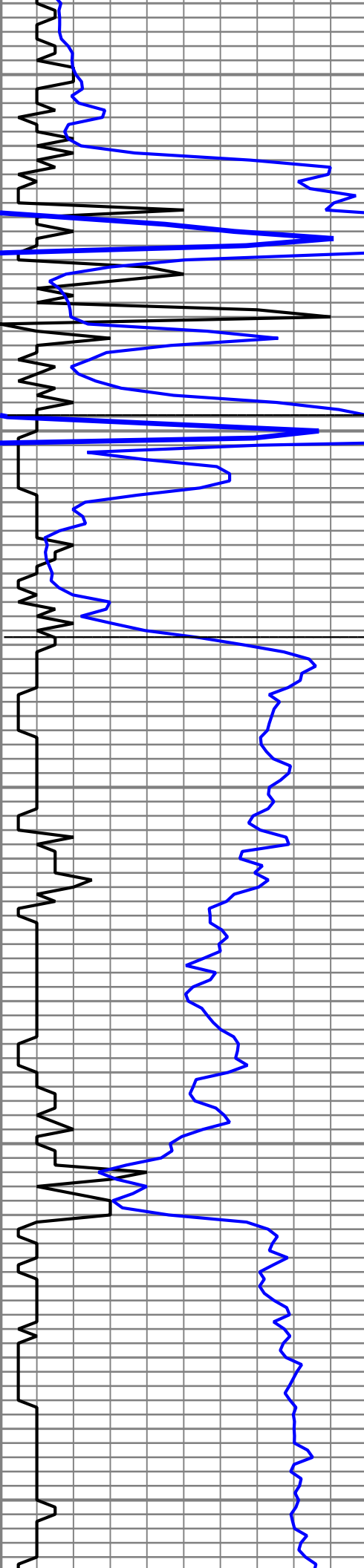
Shly Ls.

Ls, wh-crm, vf gr, sme p.p. Por, sli chlky, sme suc xln.

As above.

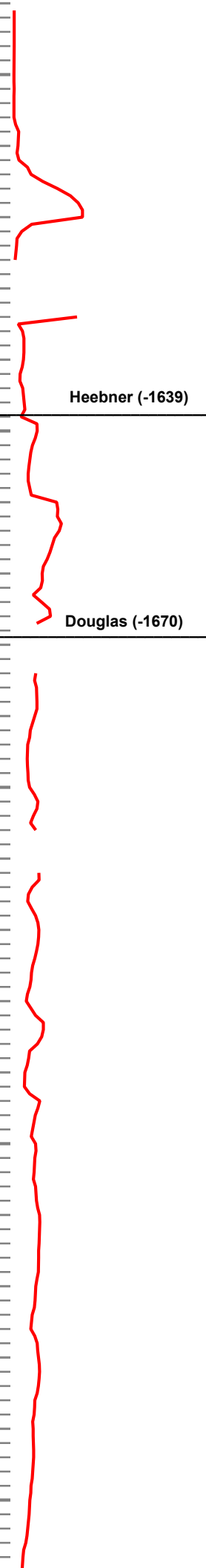
As above.





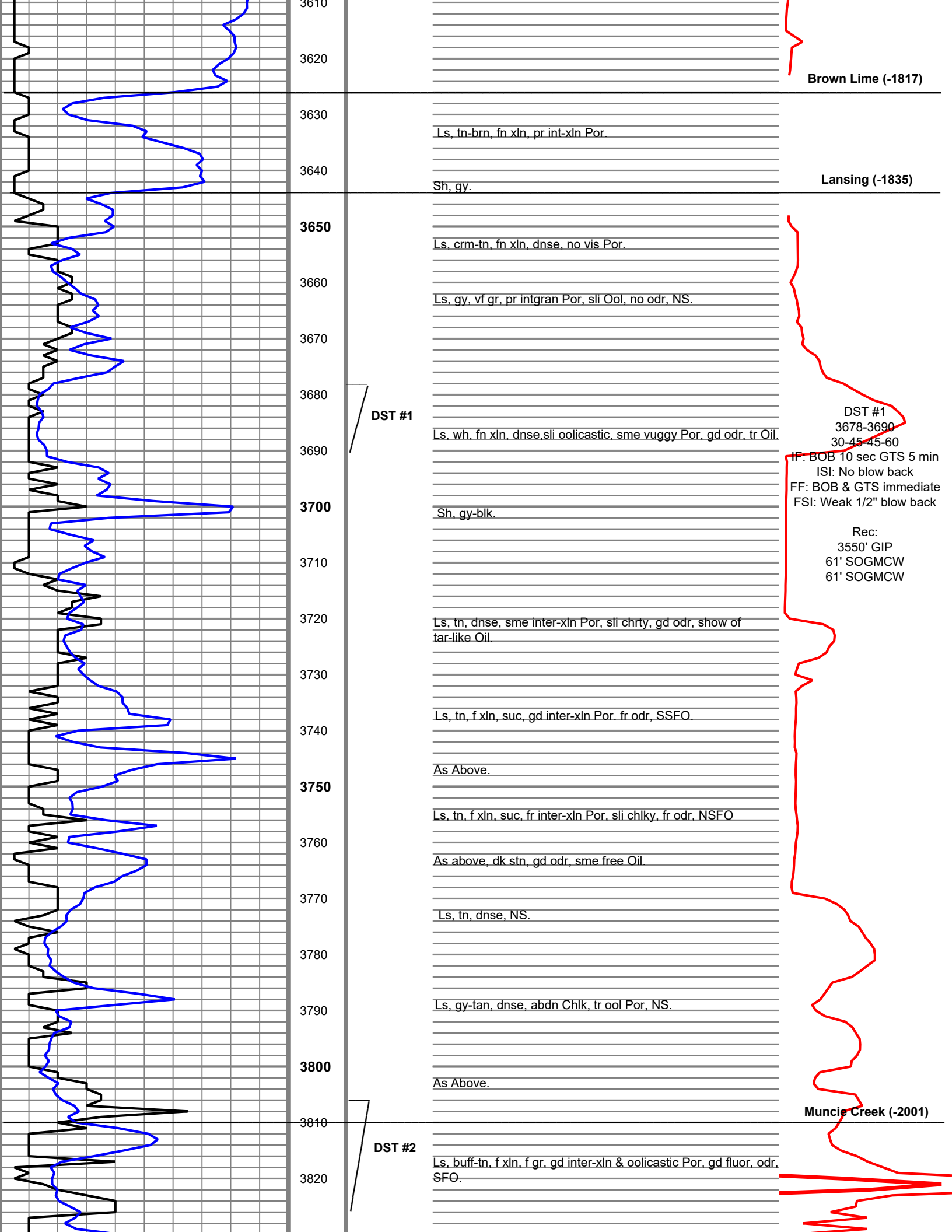
3390
3400
3410
3420
3430
3440
3450
3460
3470
3480
3490
3500
3510
3520
3530
3540
3550
3560
3570
3580
3590
3600

Ls, buff, fn xln, sme vugs, NS.
Ls, buff, fn gr, foss, sme succ w/ vuggy Por, NS.
Sh, gy - blk.
low pump #
displacement Ls, crm-buff, dnse-fn xln, foss, sli vuggy, sme chrt.
Sh, blk-gr, sme red, sli chlky Ls.
Ls, gy-buff, fr p.p. Por, foss, smwt chrt.
Sh, gy-blk.
Sh, gy-blk, sme grn, tr silt.
Shly Ss, tr sdy Ls.
Ss, gy-brn, fn gr clus, tite Por, fri, NS.
Sdy Ls.
Sh, gy-blk-grn.
Sh, gy.
As above.



Heebner (-1639)

Douglas (-1670)



Brown Lime (-1817)

Lansing (-1835)

Muncie Creek (-2001)

DST #1

DST #1
3678-3690
30-45-45-60

IF: BOB 10 sec GTS 5 min
ISI: No blow back
FF: BOB & GTS immediate
FSI: Weak 1/2" blow back

Rec:
3550' GIP
61' SOGMCW
61' SOGMCW

DST #2

Ls, tn-brn, fn xln, pr int-xln Por.

Sh, gy.

Ls, crm-tn, fn xln, dnse, no vis Por.

Ls, gy, vf gr, pr intgran Por, sli Ool, no odr, NS.

Ls, wh, fn xln, dnse, sli oolastic, sme vuggy Por, gd odr, tr Oil.

Sh, gy-blk.

Ls, tn, dnse, sme inter-xln Por, sli chrty, gd odr, show of tar-like Oil.

Ls, tn, f xln, suc, gd inter-xln Por, fr odr, SSFO.

As Above.

Ls, tn, f xln, suc, fr inter-xln Por, sli chlky, fr odr, NSFO

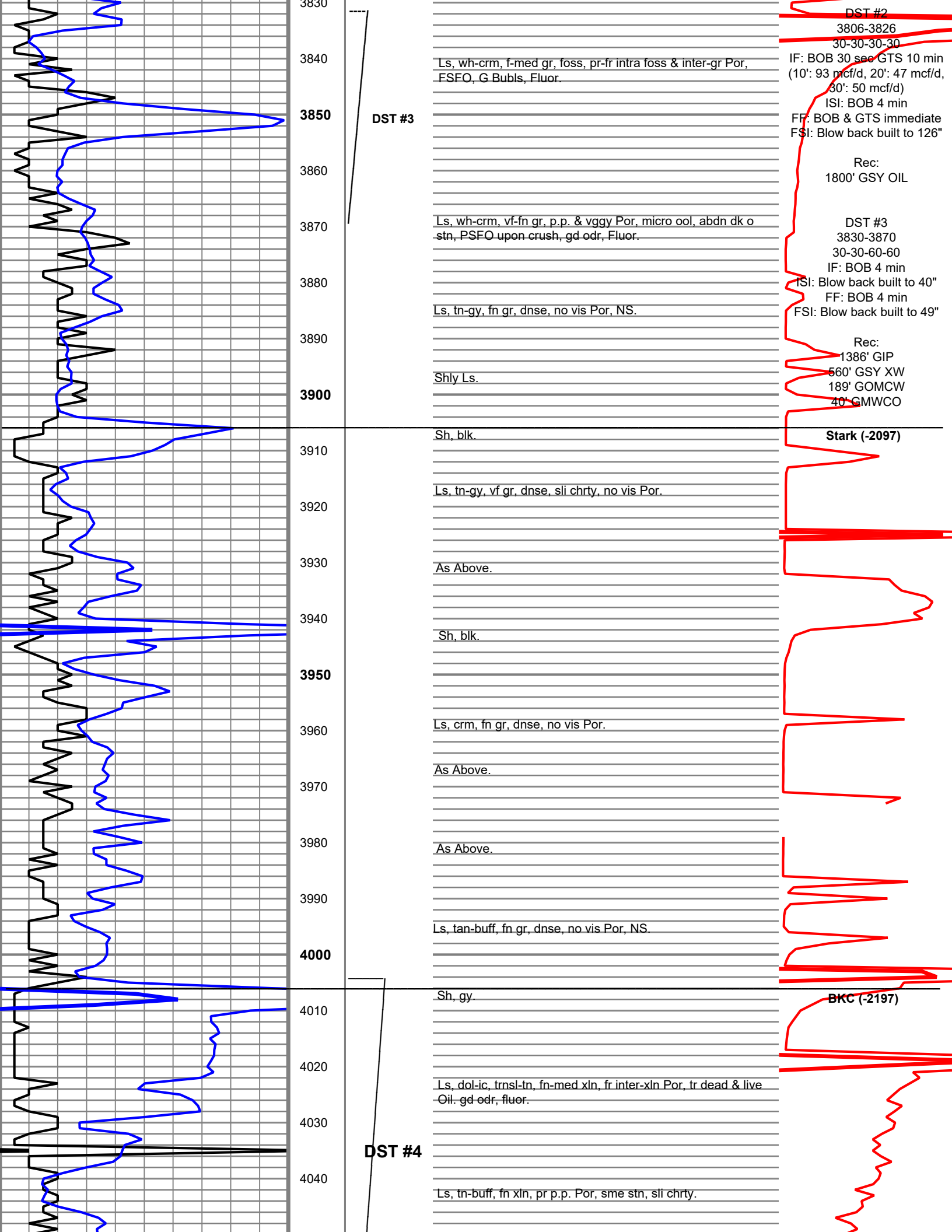
As above, dk stn, gd odr, sme free Oil.

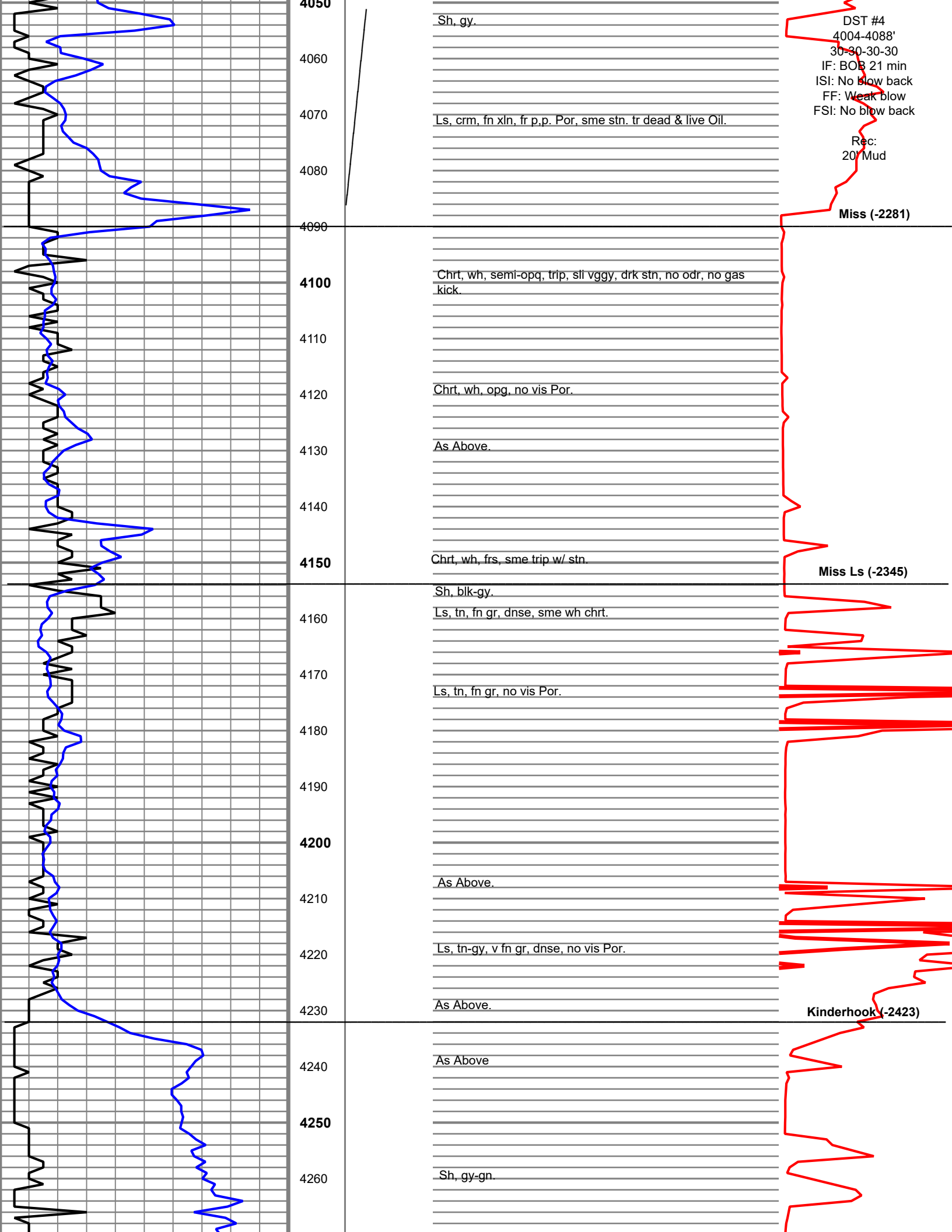
Ls, tn, dnse, NS.

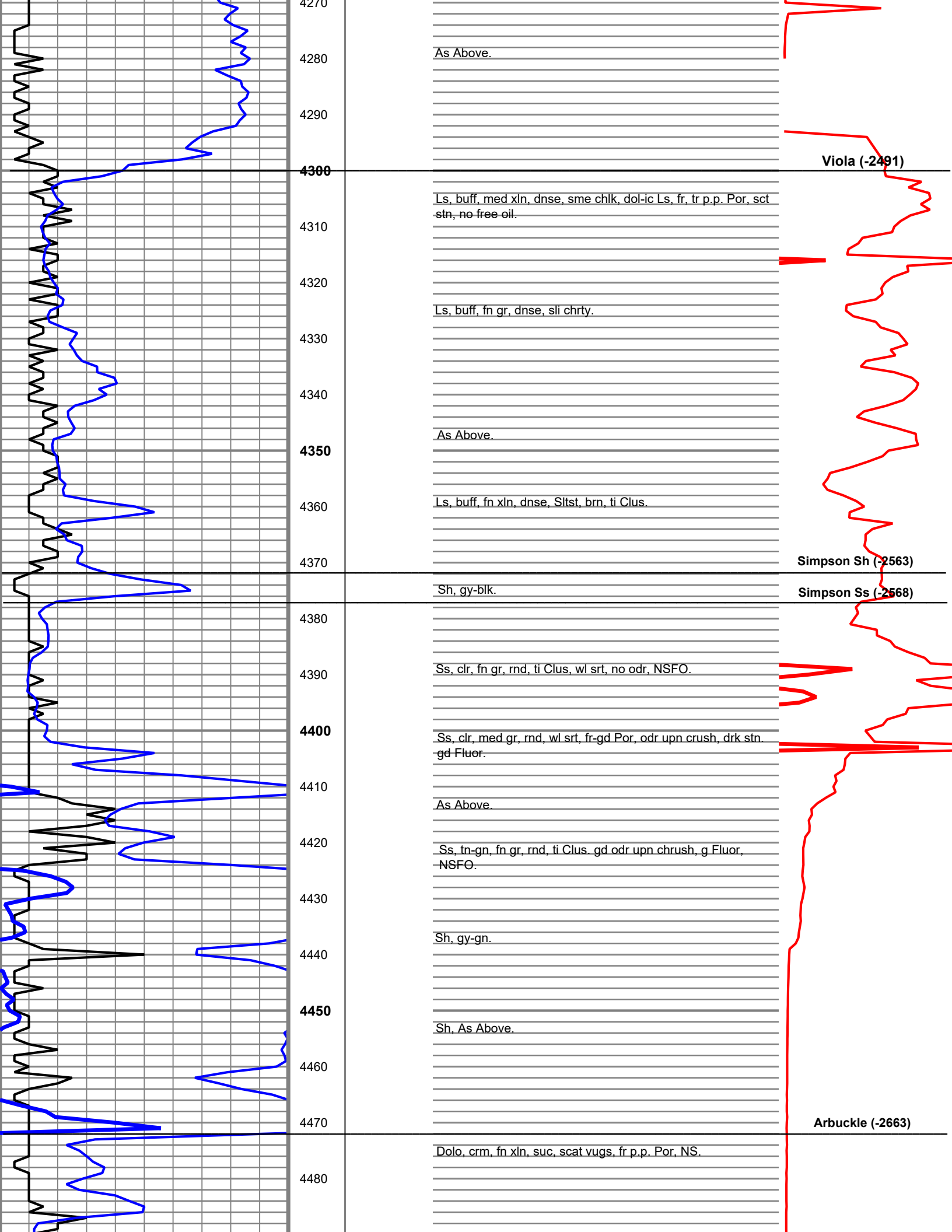
Ls, gy-tan, dnse, abdn Chlk, tr ool Por, NS.

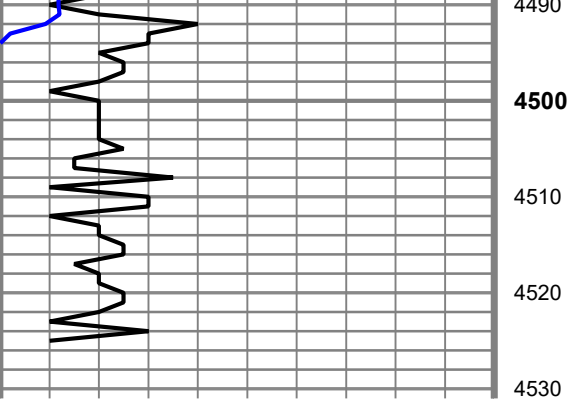
As Above.

Ls, buff-tn, f xln, f gr, gd inter-xln & oolastic Por, gd fluor, odr, SFO.



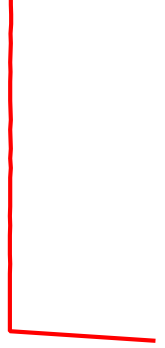






4490
4500
4510
4520
4530

As Above.
Dol-ic Ls, crm-tn, fn -med xln, suc, Foss scat vug Por, NS.
RTD: 4525' LTD:4526'



Siroky Oil Management
Green Group #1-24
24- 27S- 12W
Pratt Co., KS