



Dual Compensated
Porosity Log

DIGITAL LOG (785) 625-3858

15-113-21316

Company Te-Pe Oil & Gas
Well Bandy Trust #1
Field RitZ-Canton
County McPherson State Kansas
Location SW SW NW
Other Services DIL

Sec: 34 Twp: 19S Rge: 1W

Permanent Datum Ground Level Elevation 1575
Log Measured From Kelly Bushing 8 Ft. Above Perm. Datum
Drilling Measured From Kelly Bushing
Date 12/15/2006
Run Number One
Type Log CNL / CDL
Depth Driller 3025
Depth Logger 3026
Bottom Logged Interval 3022
Top Logged Interval Surface Csg.
Type Fluid In Hole Chemical
Salinity, PPM Cl 1,300
Density 9.5
Level Full
Max. Rec. Temp. F 108
Operating Rig Time 3 Hours
Equipment -- Location 10 Hays
Recorded By C. McLaughlin
Witnessed By Tom Blair

Elevation
K.B. 1583
D.F. 1575
G.L. 1575

Run No | Bit | From | To | Size | Wgt. | From | To

Borehole Record				Casing Record			
Run No	Bit	From	To	Size	Wgt.	From	To
One	12.25	0	222	8.625	24#	0	212
Two	7.875	222	TD				

<<< Fold Here >>>

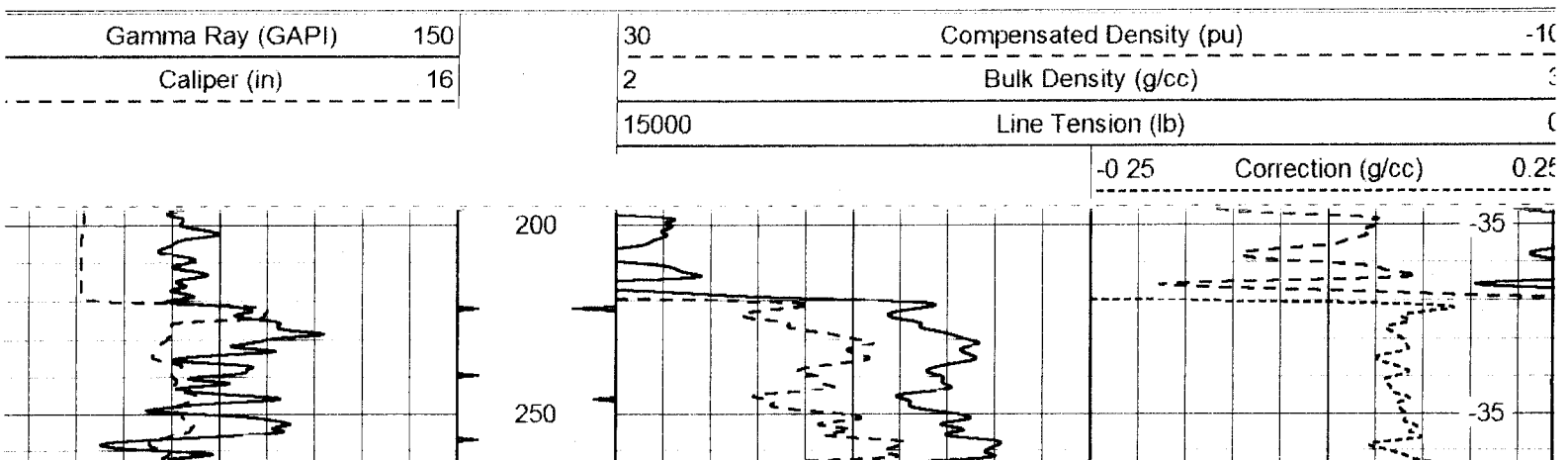
All interpretations are opinions based on inferences from electrical or other measurements and we cannot and do not guarantee the accuracy or correctness of any interpretation, and we shall not, except in the case of gross or willful negligence on our part, be liable or responsible for any loss, costs, damages, or expenses incurred or sustained by anyone resulting from any interpretation made by any of our officers, agents or employees. These interpretations are also subject to our general terms and conditions set out in our current Price Schedule.

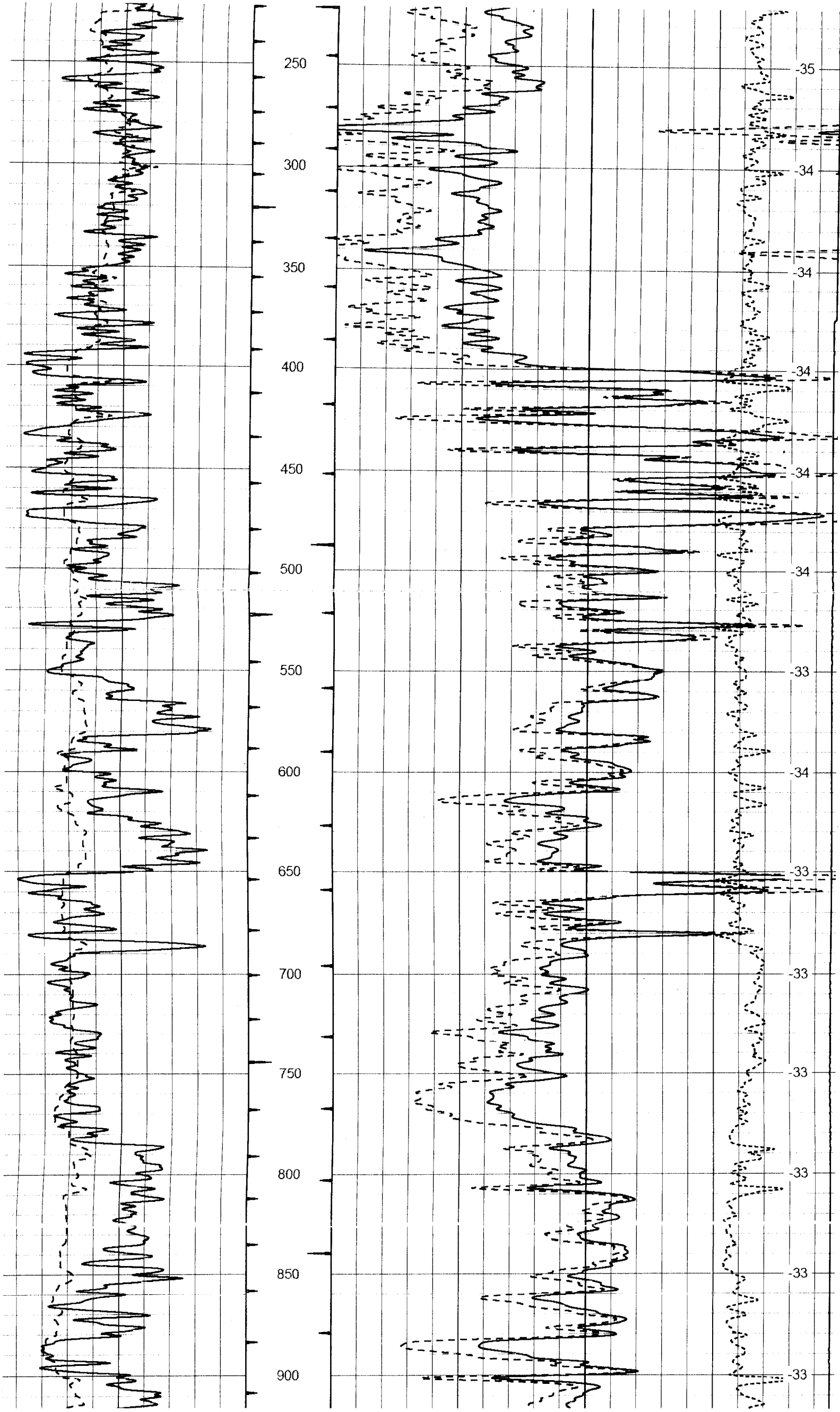
Comments

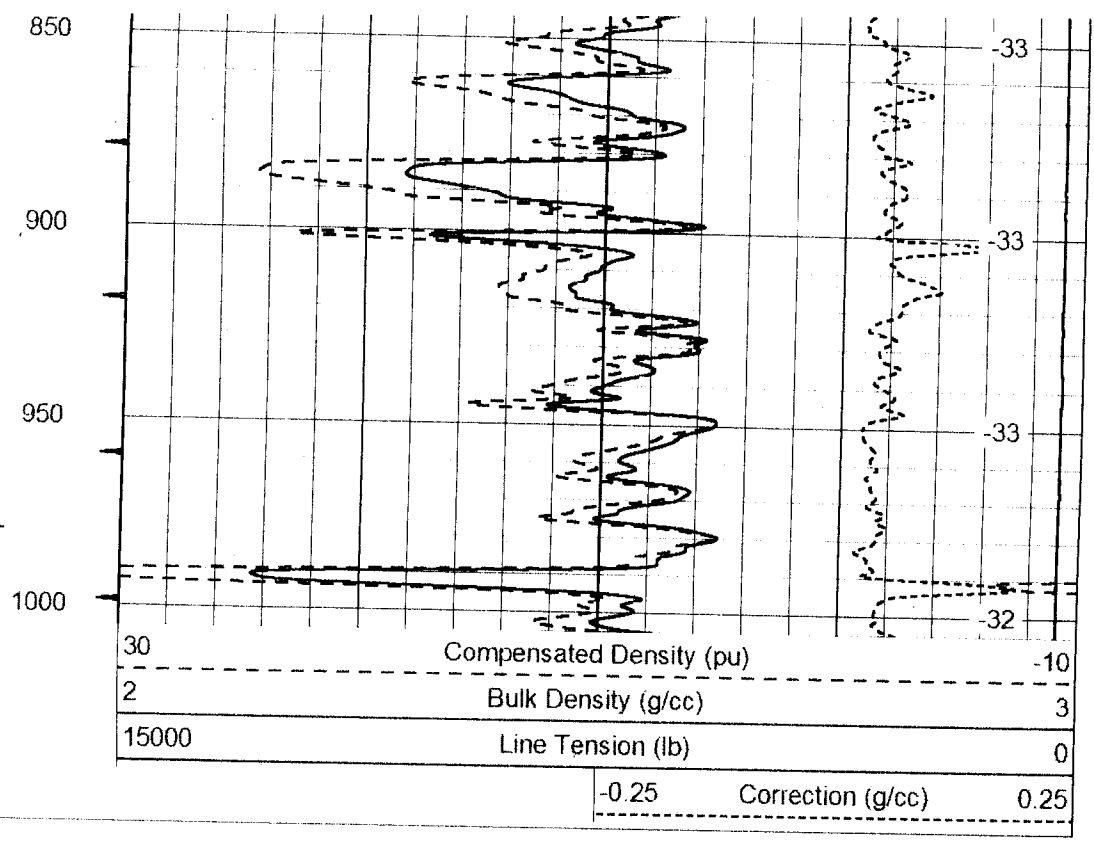
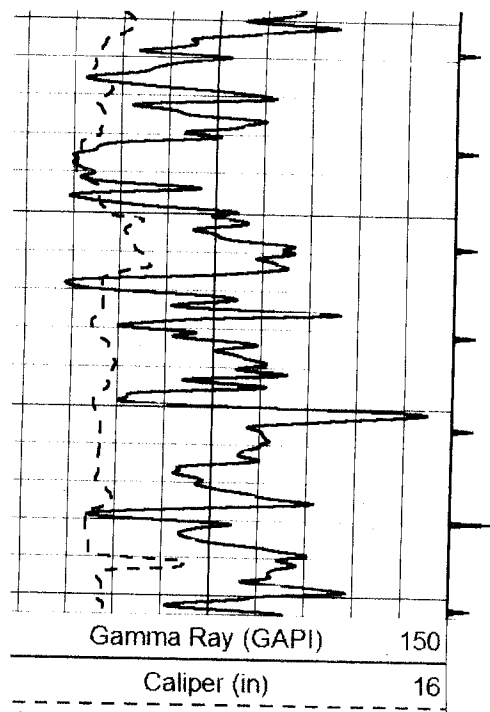
Thank you for using Log-Tech, Inc.
(785) 625-3858

Canton, 1.5S, E into

Database File: tepe.db
Dataset Pathname: stack/pass3.1
Presentation Format: cdl
Dataset Creation: Fri Dec 15 18:25:12 2006 by Calc Open-Cased 060407
Charted by: Depth in Feet scaled 1:600







Handwritten notes or scribbles on the left margin.