

JERRY GREEN

CONSULTING GEOLOGIST
4350 Keystone Rd
HAYS, KS 67601
PHONE: 785-625-5155

GEOLOGIST'S REPORT DRILLING TIME AND SAMPLE LOG

COMPANY: CASTLE RESOURCES INC.
LEASE: MOORE #1
FIELD: KB 2181
ELEVATIONS: ELEVATIONS

LOCATION: 380'FWL 1320'FNL
SEC 34 TWP 20S RGE 18
COUNTY: PAWNEE STATE: KS
CONTRACTOR: WHITE KNIGHT DRILG.
SPUD: 10-29-18 COMP: 11-5-18
RTD: 4120 LTD: 4120
MUD UP: 3400 TYPE MUD: CHEM.
SAMPLER: TYPE MUD CHEM.

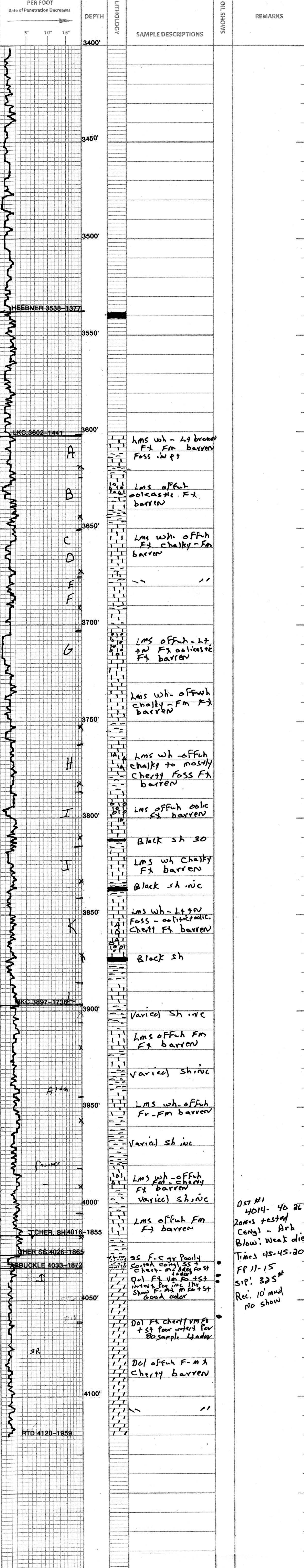
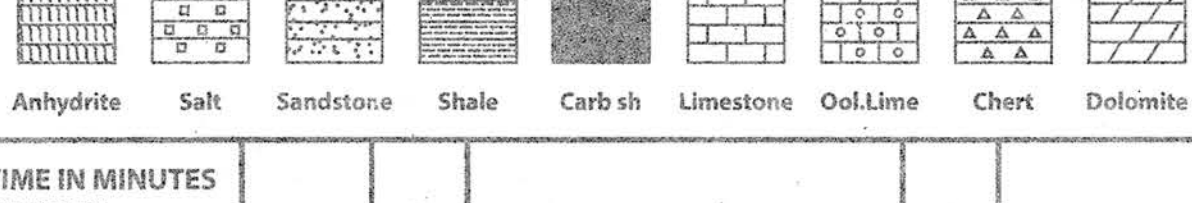
DRILLING TIME KEPT FROM 3400' TO TD.
SAMPLER EXAMINED FROM 3800' TO TD.
GEOLOGICAL SUPERVISION FROM 3800' TO TD.
GEOLOGIST ON WELL: 3800'-TD.

FORMATION TOPS	LOG	SAMPLES
ANHY.	1220-45 941	1222-47 939
HEEBNER	3544-1388	3538-1377
LKC.	3600-1439	3602-1441
BKC.	3898-1735	3897-1736
CHEROKEE SHALE	4016-1855	4016-1855
CHEROKEE SS	4026-1865	4026-1865
ARBuckle	4033-1872	4033-1872
RTD	4120-1959	4120-1959

FORMATION TOPS	LOG	SAMPLES
ANHY.	1220-45 941	1222-47 939
HEEBNER	3544-1388	3538-1377
LKC.	3600-1439	3602-1441
BKC.	3898-1735	3897-1736
CHEROKEE SHALE	4016-1855	4016-1855
CHEROKEE SS	4026-1865	4026-1865
ARBuckle	4033-1872	4033-1872
RTD	4120-1959	4120-1959

REMARKS: Our main zone of interest here was the Cherokee - conglomerate sand. This is a sand deposited in a long shore bar. The Cherokee was very thin, almost missing here, tested and condemned. The Arbuckle was quite high here and very tight, probably due to erosion. All parties involved recommended that this well be plugged respectfully submitted *Jerry Green*

LEGEND



DST #1
4014- 40 26'
Zones tested
Congl - Arb.
Blow: weak died
Times 45-45.20
FP 11-15
SIP: 325#
Rec. 10' mud
no show