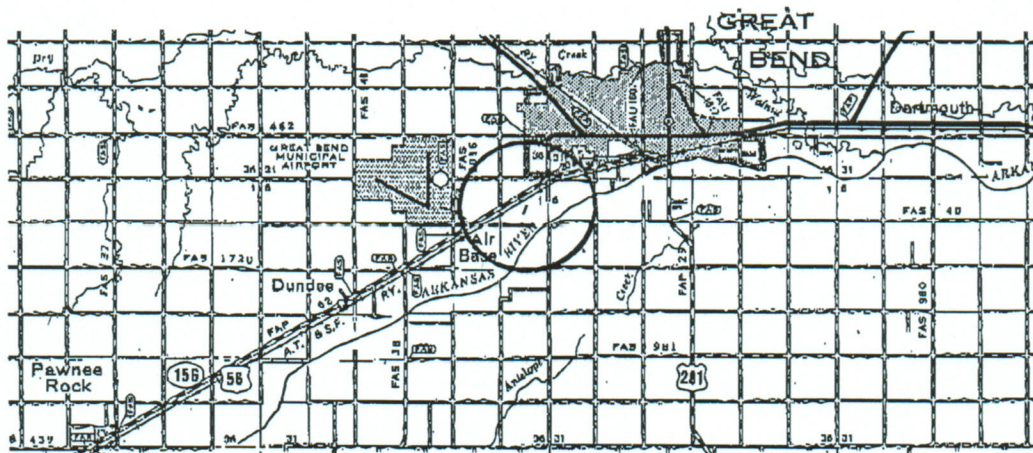
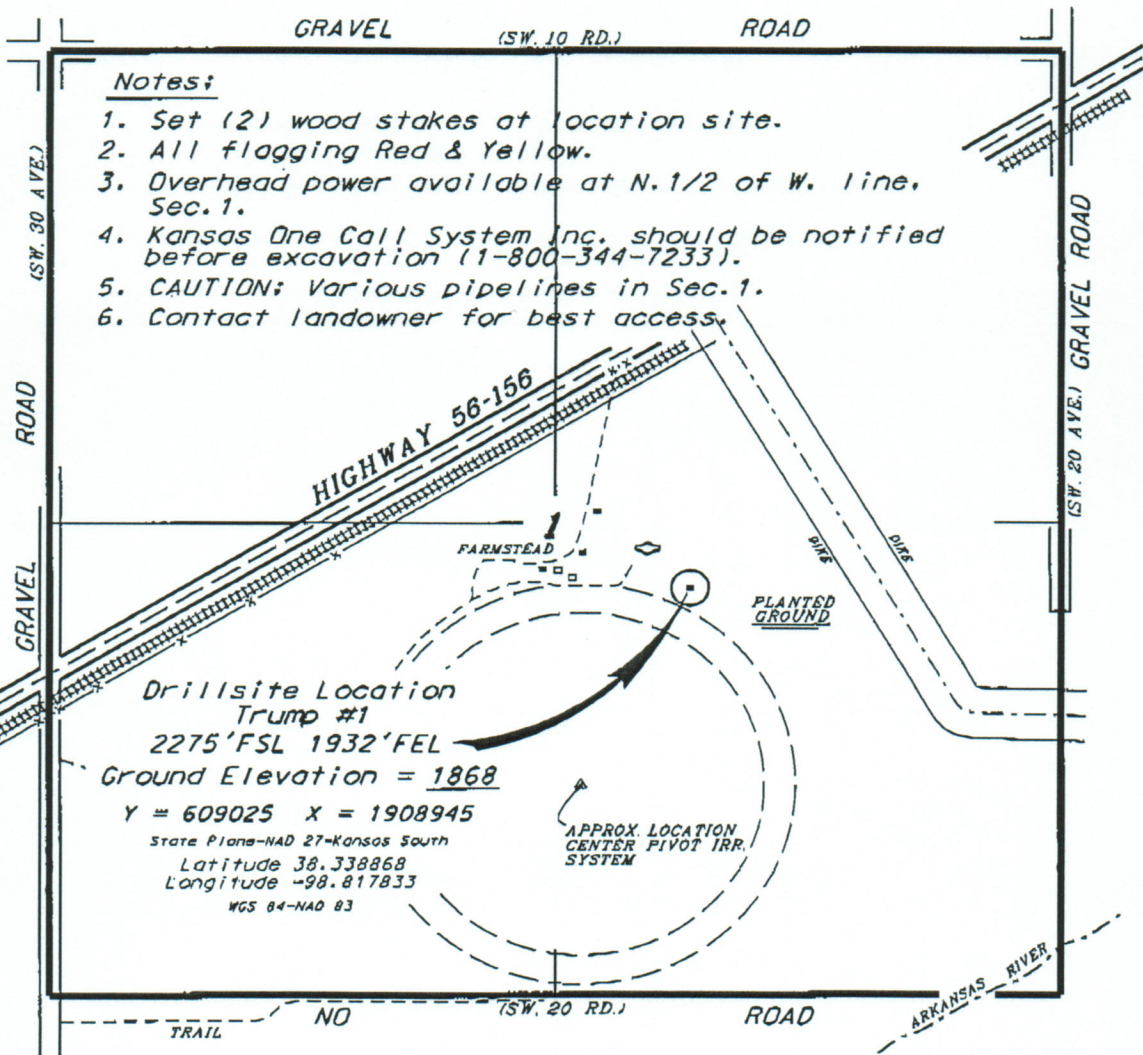


CHARTER ENERGY, INC.
TRUMP LEASE
SE. 1/4, SECTION 1, T20S, R14W
BARTON COUNTY, KANSAS

* Ingress and egress to location as shown on this plot is per usage only and may not be legally opened for public use. Contact landowner, tenant and county road department for access.



• Controlling data is based upon the best maps and photographs available to us and upon a regular section of land containing 640 acres.
 • All original section lines were determined using the normal standard of care of oilfield surveyors practicing in the state of Kansas. The section corners, which establish the precise section lines, were not necessarily located, and the exact location of the drill site location in the section is not guaranteed. Therefore, the operator securing this service and occupying this plot and all other parties relying thereon agree to hold Central Kansas Oilfield Services, Inc., its officers and employees harmless from all losses, costs and expenses and said entities released from any liability from incidental or consequential damage.
 • Elevations derived from National Geodetic Vertical Datum.

Date November 19, 2018

CENTRAL KANSAS OILFIELD SERVICES, INC. (620)792-1977

