



Geologic Report

Drilling Time and Sample Log

Operator King Oil Operations, LLC.			KB	Elevation 2953'
Lease Stevenson		No. 1-10	DF GL	2945'
API # 15-063-22341-0000			Casing Record Surface 8 5/8" @ 220' Production None	
Field Wildcat				
Location 1575' FNL & 1830' FWL				
Sec. 10	Twp. 13w	Rge. 31w	Electrical Surveys CNL/CDL, DIL, MEL	
County Gove		State Kansas		

Formation	Log Tops	Sample Tops	Struct Comp
Anhydrite	2438' +515	2438' +515	+9
Base	2462' +491	2467' +486	+10
Topeka	3745' -792	3744' -791	+10
Heebner	3966' -1013	3964' -1011	+9
Toronto	3989' -1036	3987' -1034	+9
Lansing	4008' -1055	4005' -1052	+8
BKC	4306' -1353	4304' -1351	+10
Marmaton	4337' -1384	4334' -1381	+11
Fort Scott	4492' -1539	4489' -1536	+6
Cherokee	4521' -1568	4520' -1567	+7
Johnson	4565' -1612	4564' -1611	+7
Mississippian	4592' -1639	4588' -1635	+46
Total Depth	4674' -1721	4669' -1716	

Reference Well For Structural Comparison Lario Oil & Gas Co. Stevenson Trust #1-10
1110' FSL & 2310' FWL Sec. 10 T13s R31w Gove County, Kansas

Drilling Contractor	Discovery Drilling Co., Inc.	Rig #1	
Commenced	9-11-2018	Completed	9-20-2018
Samples Saved From	3850'	To	RTD
Drilling Time Kept From	3700'	To	RTD
Samples Examined From	3850'	To	RTD
Geological Supervision From	3850'	To	RTD

Displacement **3700'** **Mud Type** **Chemical**

Summary and Recommendations

The location for the Stevenson #1-10 was located via 3-D seismic survey. The new well ran slightly lower than expected via the survey. Two Drill Stem Tests were conducted, both of which were negative. After all gathered data had been examined the decision was made to plug and abandon the Stevenson #1-10 well.

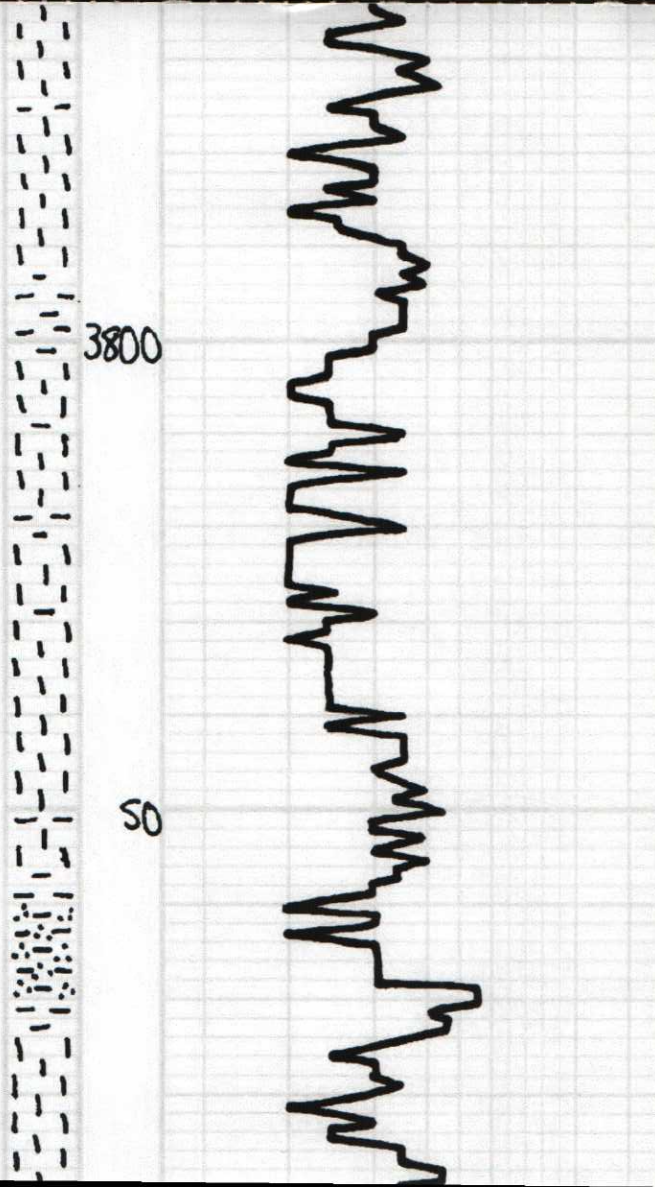
Respectfully Submitted,

**Jason T Alm
Hard Rock Consulting, Inc.**

LEGEND



LITHOLOGY	DEPTH	DRILLING TIME (Logarithmic Scale)	SAMPLE DESCRIPTIONS	REMARKS
5		1		
		2		
		3		
		4		
		5		
		10		
		15		
50				Geo on Loc. 3:00p.m. 9-15-2018
			Topeka 3744'-791'	

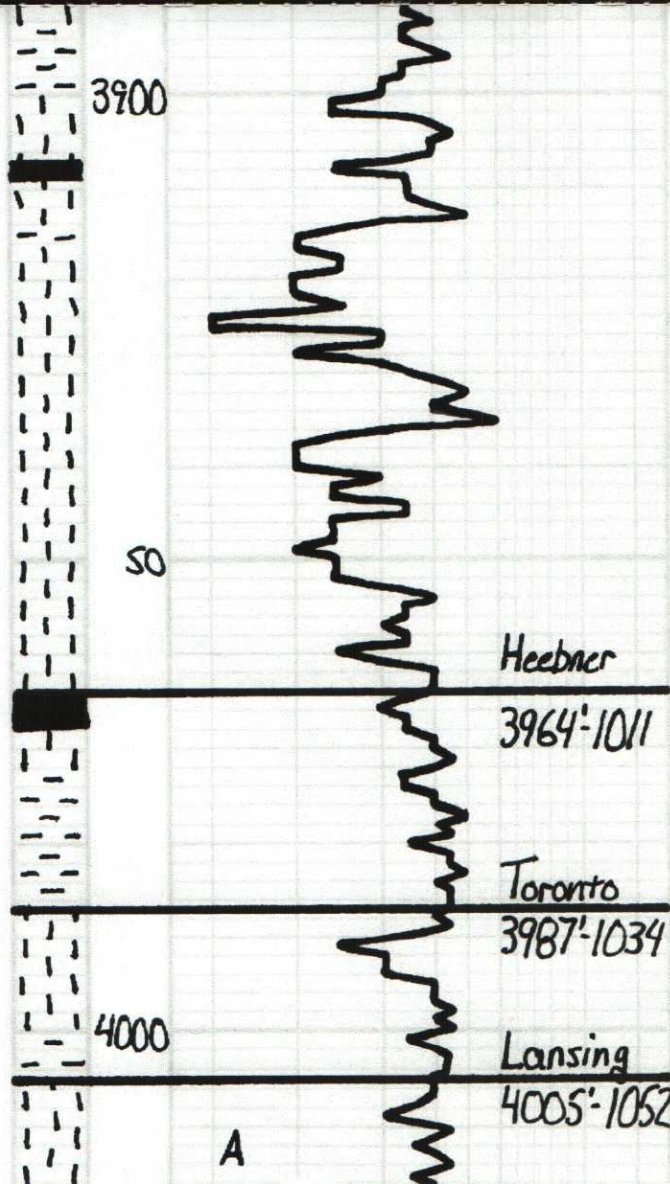


Sh- Dk Grey

Sh- Brn- Grn. Fm Grn Sil-stromatol

Sh- Grn- Brn

LS- Tan, Fm xls. Dol. w/ Brn
 Fair Mic-ool. g. Barren
 Fair LS w/ Gil. Jcs. sh



Sh - Gry - Brn

Ls - Tan, Fx xln, DNS in Part

Sh - Dk Gry - Blk

Ls - Tan - Blk wh, Fx xln,
 ool. w/ Mik 7 gopn φ,
 few Kxs w/ G. Res.

Ls - ala, No Res

Ls - ala

Sh - Blk, Carb.

Sh - Gry - Brn - Grn

Ls - Tan, Fx xln, Ool. w/ Fx xln
 No Ool. Mostly barren, V. P. li
 flat floor.

Ls - Tan, Fx xln, Ool. w/ Poor
 oom φ, barren

B

LS-ala, Mostly DNS

C

13 LS- Tan, Fr x/2, Ool in Part
w/ Foss - Fair, sp. SPO. No Odor,
Sp. of St. Fl. Floor.

50

SH- Gray

D

LS- Tan- Offwh, Subwh.
Ool. in Part, DNS

LS- a/a

E

SH- Gray

F

LS- Tan, Subwh, Ool., DNS

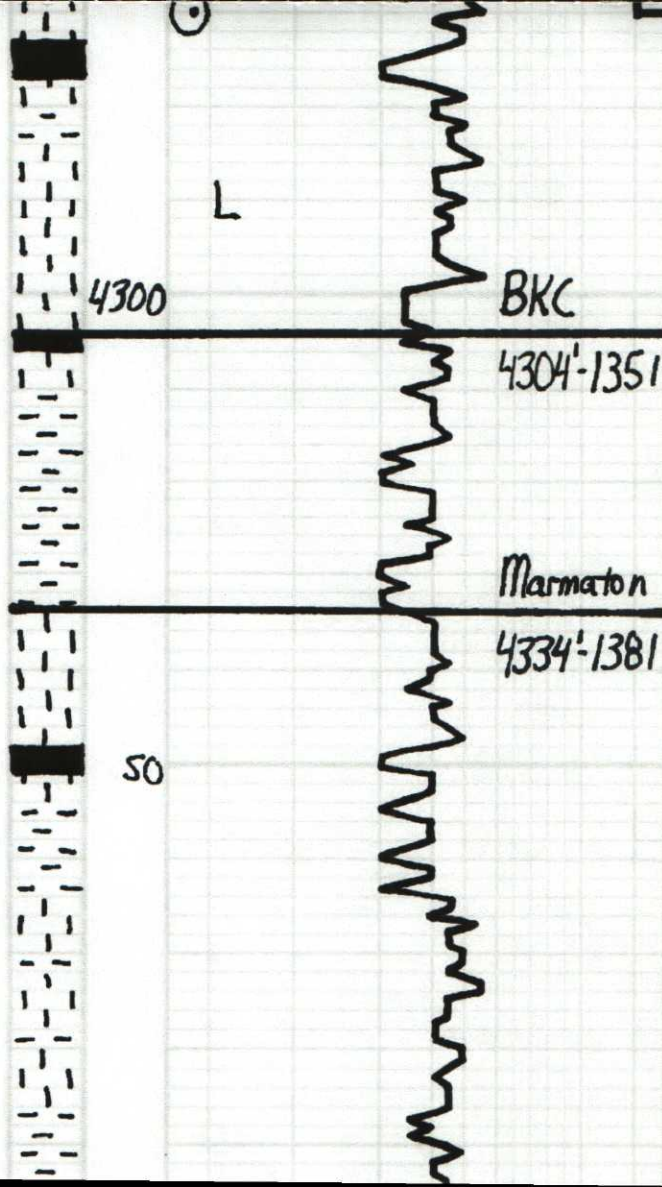
4100 (C)

LS- Offwh, Fr x/a, Ool. w/
Fair com q. Green

G

LS- ala, Mostly DNS

LS- Offwh- Tan, Subwh, Sh.
Ool., DNS



70 Sh. Blk. Carb.

Ls. Tan. Subxln. DNS, Od. in part

Ls. Tan. Frxln. Od. w/ Poor
oom of Barron
Sh. Dk Gry

Sh. Gry. Gen. "Silty"

Sh. ala

Ls. Tan. Subxln. Sl. Od. in part, DNS

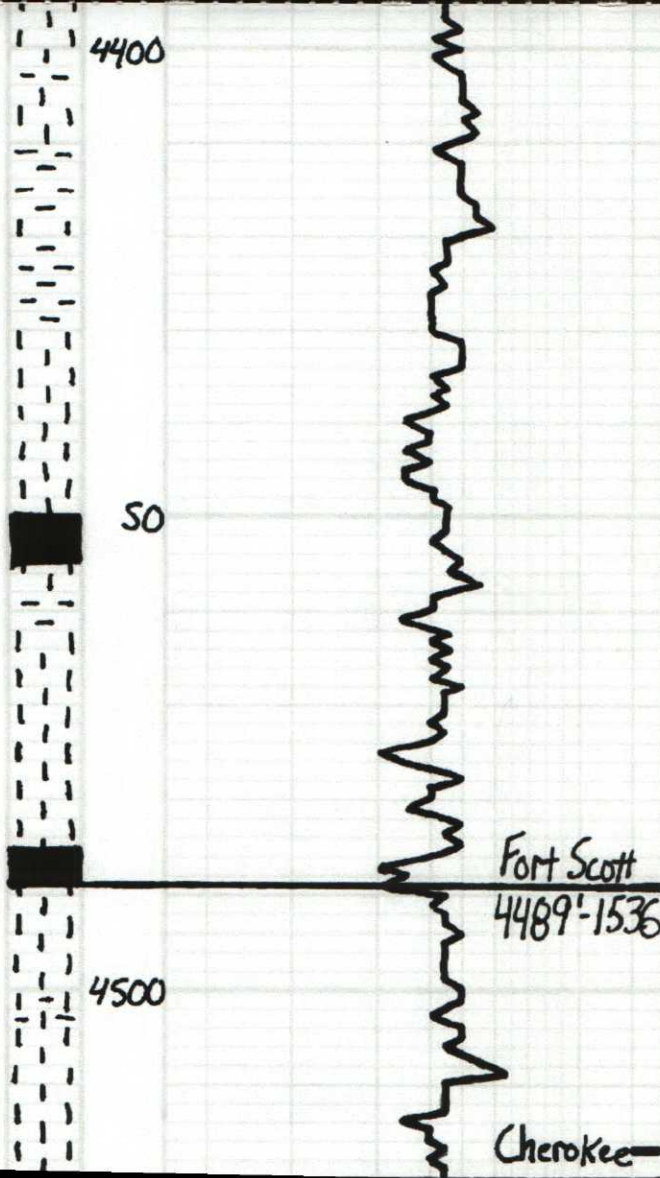
Sh. Dk Gry - Blk

Sh. Brn - Gry - Gen

Ls. Tan. Subxln. DNS

Ls. ala

Ls. ala



LS - Tan. Off. Lb. Subsl. a.
DNS, Col. in Part

Sh - Gry - Brn

Sh - Brn - Gry

LS - Tan - Lt. Gry. Fr. Subsl. a.
St. Col. in Part. Mostly DNS;

45 Sh - Blk, Carb.

LS - Tan. Subsl. a. DNS, U.
2 - Whit - Gry - Blk

LS - o/a

Fort Scott 40 Sh - Blk Carb

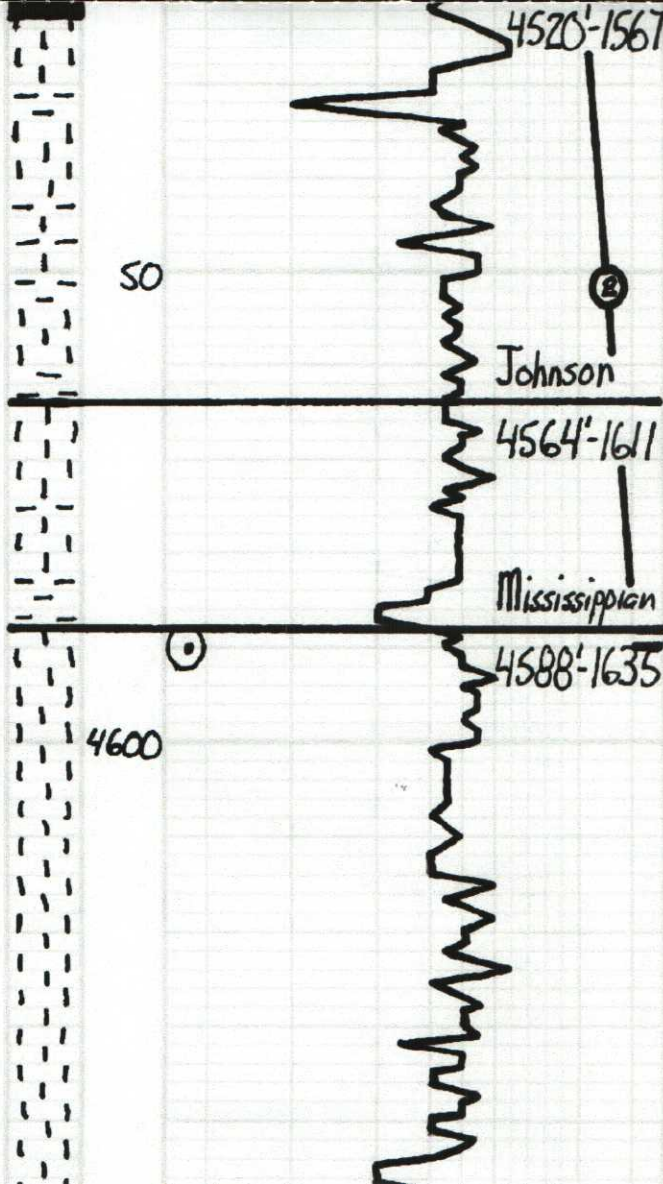
4489'-1536

LS - Tan - Gry. Subsl. a. Col. in Part
DNS

LS - Tan - Lt. Gry. Subsl. a. St.
2 - Whit - Gry

Cherokee

DST #2
Johnson
30°45'30"-45'
4517'-4590'



Sh - Dk, Cst. Col. PKST in Part, DNS

LS - Lt. Gray - Tan, Fin - Subxln w/ 1/2 Scot. Poor p. approx. 100% No V. in spot, oil & No. 70, No Odor. Dull Fluorescents.

Sh - Dk Gray

25 LS - Offwh. Lt. Gray, Fin - Subxln w/ 1/2 Scot. Poor intermed. part - Scot. Fin. oil stain & No. 70, No Odor. Dull - Fair Yel Floor

Sh - Gr - Yel, Few Random Qtz Gr.

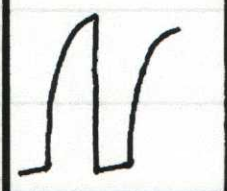
LS - Offwh, Fin - Subxln, Col. DNS

LS - Offwh, Fin yln, Col. w/ Poor comm p, barren

LS - a/a, DNS

LS - Offwh, Subxln, Col in Part, DNS

IN	24-42#
IF	Built to 24
ISI	1067#
	Dead
FF	47-57#
	Built to 1
FSI	995#
	Dead
FH	2219#
BHT	119°F
Recovery:	75' Mud



50



Total Depth
4669'-1716

Ls- a/a, Poor sect com d,
Barren

Ls- a/a

Respectfully,

Jason T. Hill
9-20-2018