



**TRILOBITE TESTING, INC.**

# DRILL STEM TEST REPORT

Woolsey Operating Company

**10-31s-7w Harper Co KS**

125 N Market STE 1000  
Wichita, Ks. 67202

**Gerber #1**

Job Ticket: 64903

**DST#: 2**

ATTN: Bill Klaver

Test Start: 2018.11.08 @ 23:56:51

## GENERAL INFORMATION:

Formation: **Mississippi**

Deviated: No Whipstock: ft (KB)

Time Tool Opened: 02:31:36

Time Test Ended: 09:19:51

Test Type: Conventional Bottom Hole (Reset)

Tester: Matt Smith

Unit No: 68

**Interval: 4361.00 ft (KB) To 4376.00 ft (KB) (TVD)**

Reference Elevations: 1587.00 ft (KB)

Total Depth: 4376.00 ft (KB) (TVD)

1575.00 ft (CF)

Hole Diameter: 7.88 inches Hole Condition: Fair

KB to GR/CF: 12.00 ft

**Serial #: 8931**

**Inside**

Press@RunDepth: 1257.35 psig @ 4362.00 ft (KB)

Capacity: 8000.00 psig

Start Date: 2018.11.08

End Date:

2018.11.09

Last Calib.:

2018.11.09

Start Time: 23:56:56

End Time:

09:19:51

Time On Btm:

2018.11.09 @ 02:26:36

Time Off Btm:

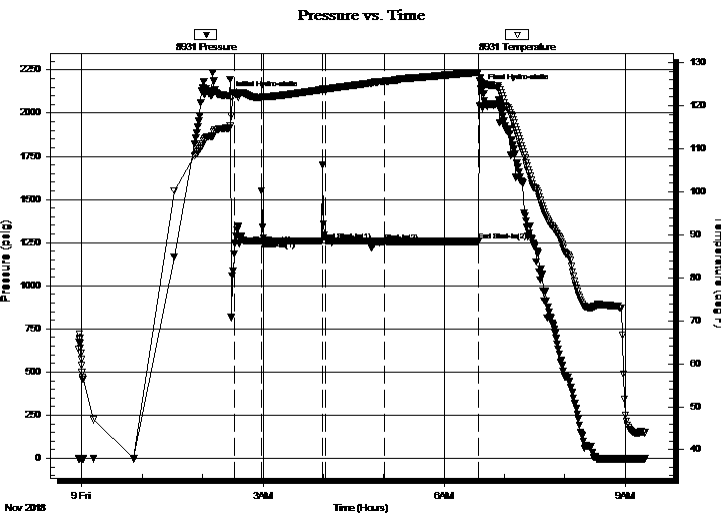
2018.11.09 @ 06:36:36

**TEST COMMENT:** IF: Weak blow . Built to 4 1/2". Tool slid 20' - tool plugged (14' perforated anchor)

IS: No blow .

FF: No blow .

FS: No blow .



## PRESSURE SUMMARY

Time (Min.)	Pressure (psig)	Temp (deg F)	Annotation
0	2100.54	114.81	Initial Hydro-static
5	1245.24	122.73	Open To Flow (1)
32	1260.23	121.82	Shut-In(1)
93	1259.42	123.70	End Shut-In(1)
96	1275.17	123.82	Open To Flow (2)
155	1257.35	125.65	Shut-In(2)
248	1257.57	127.70	End Shut-In(2)
250	2143.48	125.27	Final Hydro-static

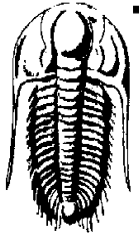
## Recovery

Length (ft)	Description	Volume (bbl)
61.00	Oil scum GM 10%g 90%m	0.30

## Gas Rates

Choke (inches)	Pressure (psig)	Gas Rate (Mcf/d)

\* Recovery from multiple tests



**TRILOBITE TESTING, INC.**

## DRILL STEM TEST REPORT

Woolsey Operating Company

**10-31s-7w Harper Co KS**

125 N Market STE 1000  
Wichita, Ks. 67202

**Gerber #1**

Job Ticket: 64903

**DST#: 2**

ATTN: Bill Klaver

Test Start: 2018.11.08 @ 23:56:51

### GENERAL INFORMATION:

Formation: **Mississippi**

Deviated: No Whipstock: ft (KB)

Time Tool Opened: 02:31:36

Time Test Ended: 09:19:51

Test Type: Conventional Bottom Hole (Reset)

Tester: Matt Smith

Unit No: 68

**Interval: 4361.00 ft (KB) To 4376.00 ft (KB) (TVD)**

Reference Elevations: 1587.00 ft (KB)

Total Depth: 4376.00 ft (KB) (TVD)

1575.00 ft (CF)

Hole Diameter: 7.88 inches Hole Condition: Fair

KB to GR/CF: 12.00 ft

**Serial #: 8792 Outside**

Press@RunDepth: psig @ 4362.00 ft (KB)

Capacity: 8000.00 psig

Start Date: 2018.11.08

End Date:

2018.11.09

Last Calib.:

2018.11.09

Start Time: 23:56:49

End Time:

09:19:44

Time On Btm:

Time Off Btm:

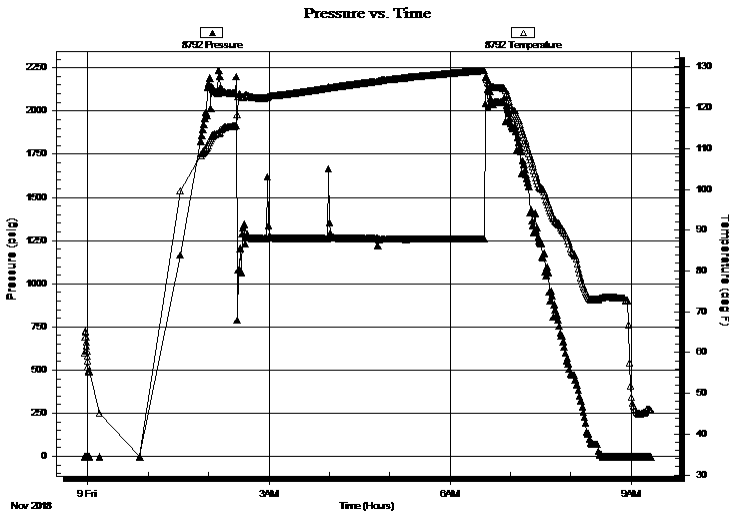
**TEST COMMENT:** IF: Weak blow . Built to 4 1/2". Tool slid 20' - tool plugged (14' perforated anchor)

IS: No blow .

FF: No blow .

FS: No blow .

### PRESSURE SUMMARY



Time (Min.)	Pressure (psig)	Temp (deg F)	Annotation

### Recovery

Length (ft)	Description	Volume (bbl)
61.00	Oil scum GM 10%g 90%m	0.30

### Gas Rates

Choke (inches)	Pressure (psig)	Gas Rate (Mcf/d)

\* Recovery from multiple tests



**TRILOBITE  
TESTING, INC.**

# DRILL STEM TEST REPORT

**FLUID SUMMARY**

Woolsey Operating Company

**10-31s-7w Harper Co KS**

125 N Market STE 1000  
Wichita, Ks. 67202

**Gerber #1**

Job Ticket: 64903

**DST#: 2**

ATTN: Bill Klaver

Test Start: 2018.11.08 @ 23:56:51

## Mud and Cushion Information

Mud Type: Gel Chem

Cushion Type:

Oil API:

deg API

Mud Weight: 10.00 lb/gal

Cushion Length:

ft

Water Salinity:

8000 ppm

Viscosity: 49.00 sec/qt

Cushion Volume:

bbbl

Water Loss: 10.39 in<sup>3</sup>

Gas Cushion Type:

Resistivity: 8000.00 ohm.m

Gas Cushion Pressure:

psig

Salinity: ppm

Filter Cake: 0.20 inches

## Recovery Information

Recovery Table

Length ft	Description	Volume bbl
61.00	Oil scum GM 10%g 90%m	0.300

Total Length: 61.00 ft      Total Volume: 0.300 bbl

Num Fluid Samples: 0

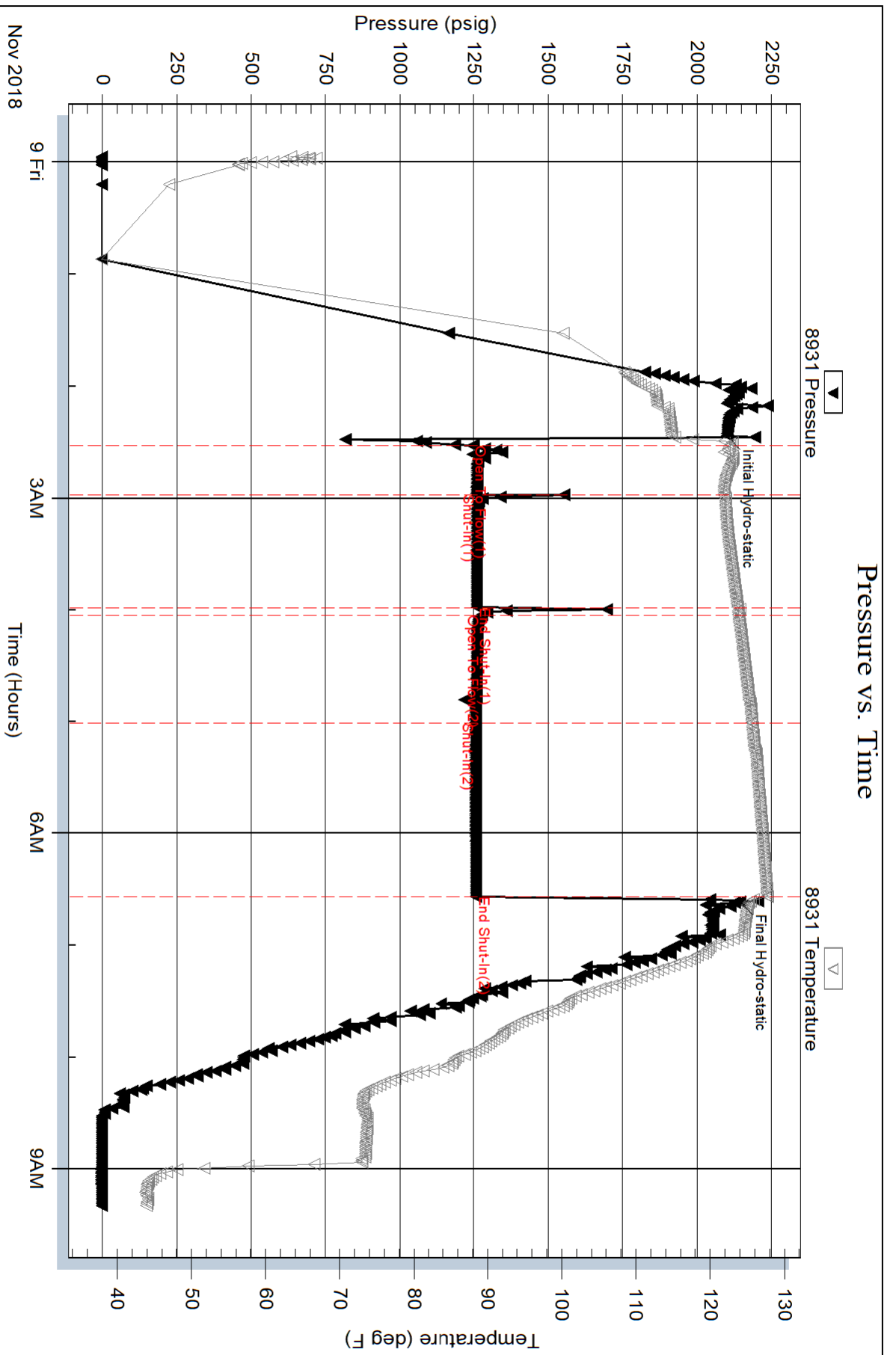
Num Gas Bombs: 0

Serial #: none

Laboratory Name:

Laboratory Location:

Recovery Comments:



Serial #: 8792

Outside Woodsey Operating Company

Gerber #1

DST Test Number: 2

