



**TRILOBITE TESTING, INC.**

# DRILL STEM TEST REPORT

Woolsey Operating Company

**10-31s-7w Harper Co KS**

125 N Market STE 1000  
Wichita, Ks. 67202

**Gerber #1**

Job Ticket: 64904

**DST#: 3**

ATTN: Bill Klaver

Test Start: 2018.11.10 @ 11:30:42

## GENERAL INFORMATION:

Formation: **Simpson**

Deviated: No Whipstock: ft (KB)

Time Tool Opened: 14:32:57

Time Test Ended: 20:53:42

Interval: **4740.00 ft (KB) To 4757.00 ft (KB) (TVD)**

Total Depth: 4757.00 ft (KB) (TVD)

Hole Diameter: 7.88 inches Hole Condition: Fair

Test Type: Conventional Bottom Hole (Reset)

Tester: Matt Smith

Unit No: 68

Reference Elevations: 1587.00 ft (KB)

1575.00 ft (CF)

KB to GR/CF: 12.00 ft

**Serial #: 8931**

**Inside**

Press@RunDepth: 444.22 psig @ 4741.00 ft (KB)

Start Date: 2018.11.10

End Date:

2018.11.10

Start Time: 11:30:47

End Time:

20:53:42

Capacity: 8000.00 psig

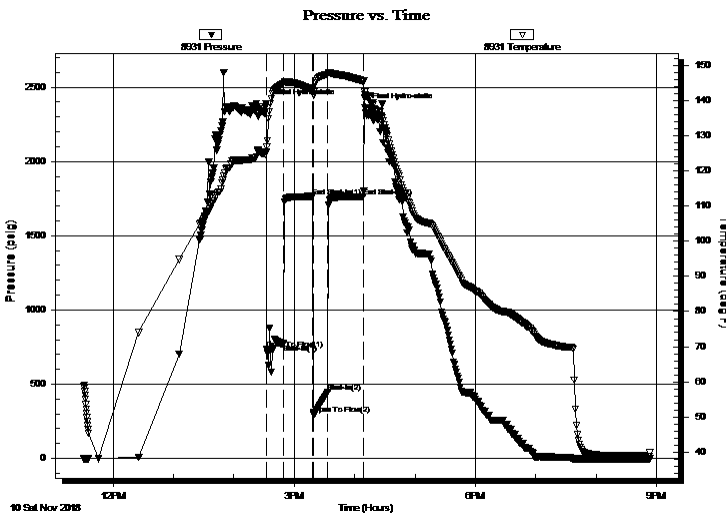
Last Calib.: 2018.11.10

Time On Btm: 2018.11.10 @ 14:31:57

Time Off Btm: 2018.11.10 @ 16:10:27

**TEST COMMENT:** IF: Strong blow . B.O.B. in 2 mins. Built to 56.09".  
IS: Weak blow . Built to 4 1/2".  
FF: Strong blow . B.O.B. in 2 mins. Built to 63.72".  
FS: Strong blow . Built to 56.83".

## PRESSURE SUMMARY



Time (Min.)	Pressure (psig)	Temp (deg F)	Annotation
0	2389.49	125.28	Initial Hydro-static
1	736.20	126.93	Open To Flow (1)
18	772.86	144.95	Shut-In(1)
47	1764.11	143.19	End Shut-In(1)
48	295.76	141.59	Open To Flow (2)
62	444.22	147.44	Shut-In(2)
97	1763.72	145.58	End Shut-In(2)
99	2363.42	141.74	Final Hydro-static

## Recovery

Length (ft)	Description	Volume (bbl)
121.00	MW 1% m 99% w	0.60
248.00	Oil scum MW 1% m 99% w	3.48
248.00	OMCGW 5% o 5% m 20% g 70% w	3.48
250.00	OGCMW 5% o 25% g 25% m 45% w	3.51
0.00	G.I.P. 100% g	0.00

\* Recovery from multiple tests

## Gas Rates

Choke (inches)	Pressure (psig)	Gas Rate (Mcf/d)
----------------	-----------------	------------------



**TRILOBITE TESTING, INC.**

# DRILL STEM TEST REPORT

Woolsey Operating Company

125 N Market STE 1000  
Wichita, Ks. 67202

ATTN: Bill Klaver

**10-31s-7w Harper Co KS**

**Gerber #1**

Job Ticket: 64904

**DST#: 3**

Test Start: 2018.11.10 @ 11:30:42

## GENERAL INFORMATION:

Formation: **Simpson**

Deviated: No Whipstock: ft (KB)

Time Tool Opened: 14:32:57

Time Test Ended: 20:53:42

**Interval: 4740.00 ft (KB) To 457.00 ft (KB) (TVD)**

Total Depth: 4757.00 ft (KB) (TVD)

Hole Diameter: 7.88 inches Hole Condition: Fair

Test Type: Conventional Bottom Hole (Reset)

Tester: Matt Smith

Unit No: 68

Reference Elevations: 1587.00 ft (KB)

1575.00 ft (CF)

KB to GR/CF: 12.00 ft

**Serial #: 8792** Outside

Press@RunDepth: psig @ 4741.00 ft (KB)

Start Date: 2018.11.10

End Date: 2018.11.10

Start Time: 11:30:42

End Time: 20:53:37

Capacity: 8000.00 psig

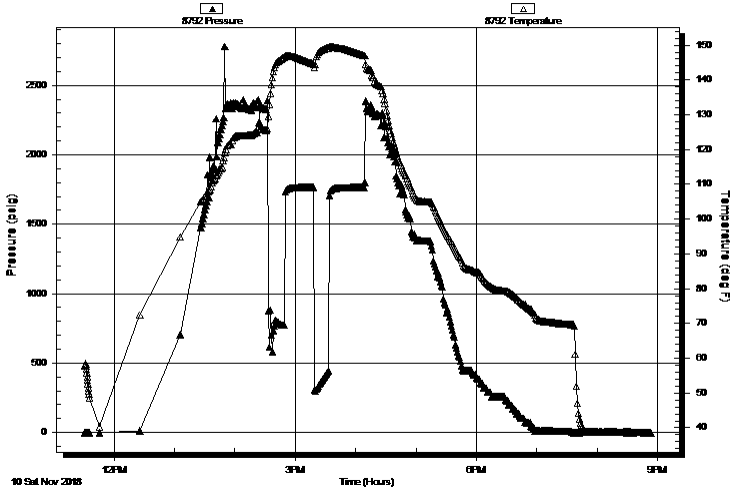
Last Calib.: 2018.11.10

Time On Btm:

Time Off Btm:

**TEST COMMENT:** IF: Strong blow . B.O.B. in 2 mins. Built to 56.09".  
IS: Weak blow . Built to 4 1/2".  
FF: Strong blow . B.O.B. in 2 mins. Built to 63.72".  
FS: Strong blow . Built to 56.83".

**Pressure vs. Time**



## PRESSURE SUMMARY

Time (Min.)	Pressure (psig)	Temp (deg F)	Annotation

## Recovery

Length (ft)	Description	Volume (bbl)
121.00	MW 1% <i>m</i> 99% <i>w</i>	0.60
248.00	Oil scum MW 1% <i>m</i> 99% <i>w</i>	3.48
248.00	OMCGW 5% <i>o</i> 5% <i>m</i> 20% <i>g</i> 70% <i>w</i>	3.48
250.00	OGCMW 5% <i>o</i> 25% <i>g</i> 25% <i>m</i> 45% <i>w</i>	3.51
0.00	G.I.P. 100% <i>g</i>	0.00

## Gas Rates

Choke (inches)	Pressure (psig)	Gas Rate (Mcf/d)

\* Recovery from multiple tests



**TRILOBITE  
TESTING, INC.**

# DRILL STEM TEST REPORT

**FLUID SUMMARY**

Woolsey Operating Company

**10-31s-7w Harper Co KS**

125 N Market STE 1000  
Wichita, Ks. 67202

**Gerber #1**

Job Ticket: 64904

**DST#: 3**

ATTN: Bill Klaver

Test Start: 2018.11.10 @ 11:30:42

## Mud and Cushion Information

Mud Type: Gel Chem

Cushion Type:

Oil API:

deg API

Mud Weight: 10.00 lb/gal

Cushion Length:

ft

Water Salinity:

89000 ppm

Viscosity: 50.00 sec/qt

Cushion Volume:

bbbl

Water Loss: 8.79 in<sup>3</sup>

Gas Cushion Type:

Resistivity: 5000.00 ohm.m

Gas Cushion Pressure:

psig

Salinity: ppm

Filter Cake: 0.20 inches

## Recovery Information

Recovery Table

Length ft	Description	Volume bbl
121.00	MW 1% <i>m</i> 99% <i>w</i>	0.595
248.00	Oil scum MW 1% <i>m</i> 99% <i>w</i>	3.479
248.00	OMCGW 5% <i>o</i> 5% <i>m</i> 20% <i>g</i> 70% <i>w</i>	3.479
250.00	OGCMW 5% <i>o</i> 25% <i>g</i> 25% <i>m</i> 45% <i>w</i>	3.507
0.00	G.I.P. 100% <i>g</i>	0.000

Total Length: 867.00 ft

Total Volume: 11.060 bbl

Num Fluid Samples: 0

Num Gas Bombs: 0

Serial #: none

Laboratory Name:

Laboratory Location:

Recovery Comments: 1209 FT of Gas In Pipe. 100%*g*

Serial #: 8931

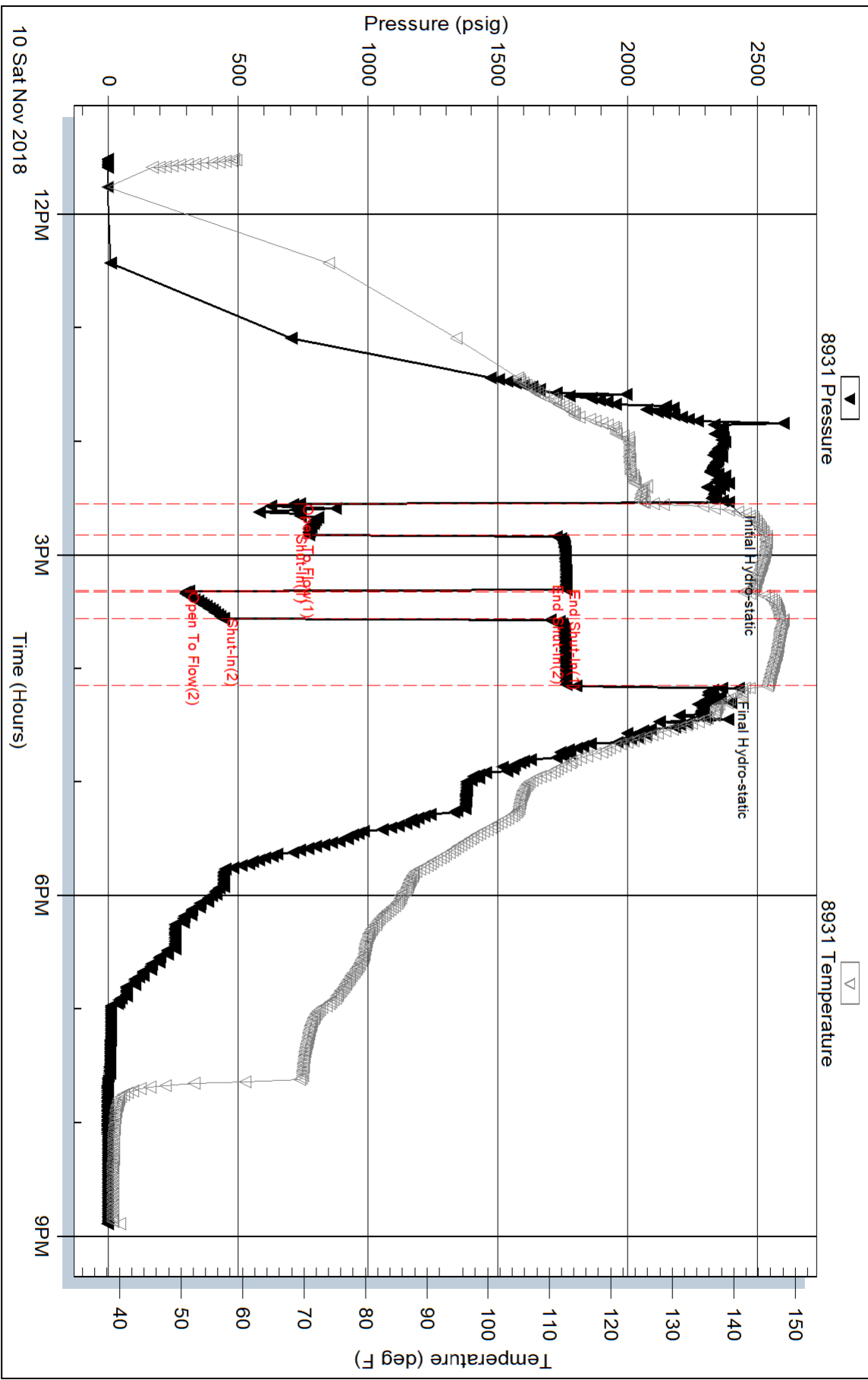
Inside

Woodsey Operating Company

Gerber #1

DST Test Number: 3

### Pressure vs. Time



Triobite Testing, Inc

Ref. No: 64904

Printed: 2018.11.10 @ 21:47:39

Serial #: 8792

Outside Woodsey Operating Company

Gerber #1

DST Test Number: 3

