

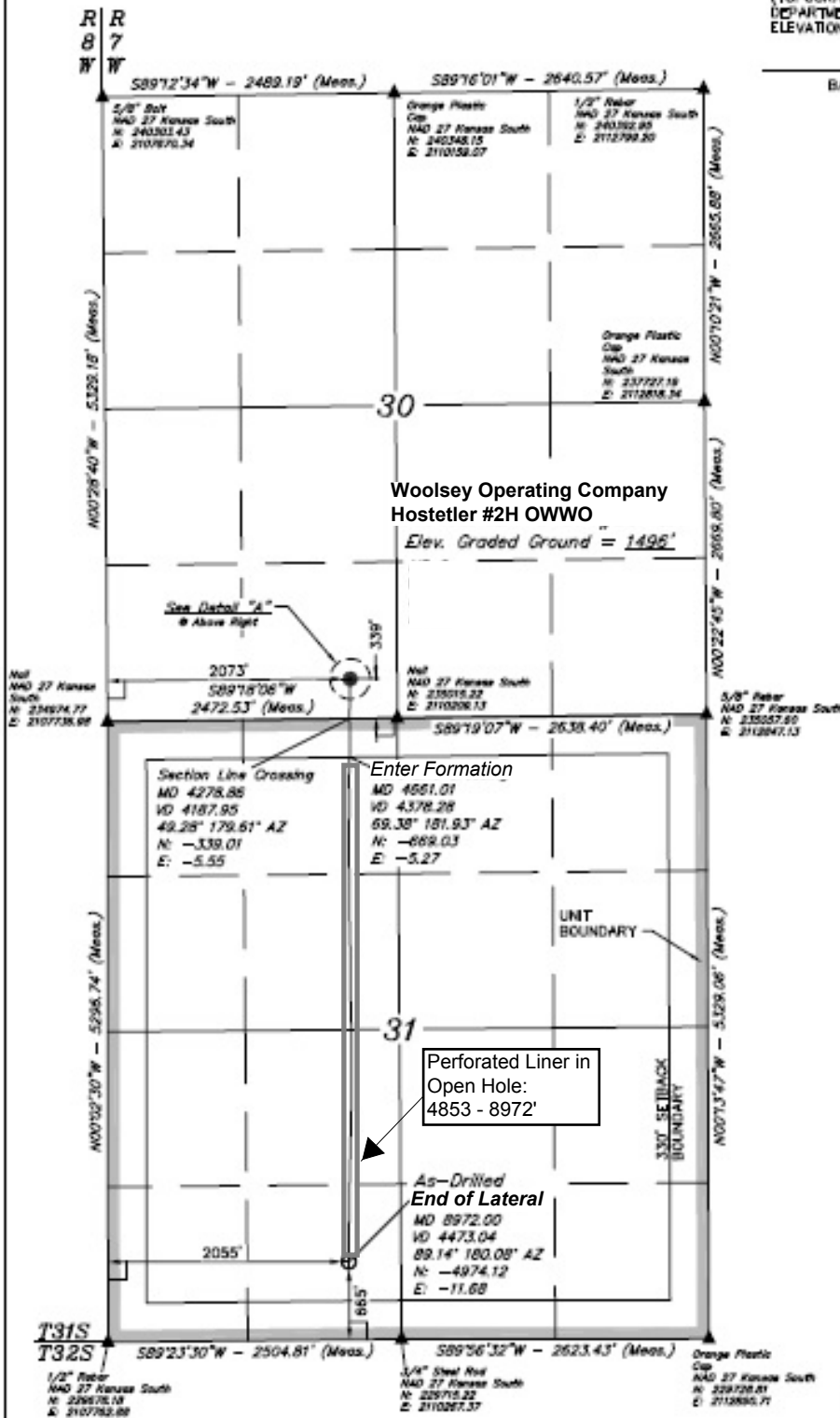
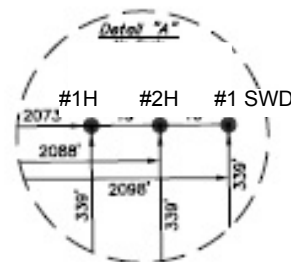
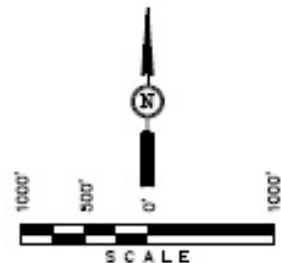
Well location, HOSTETLER #2H OWWO, located as shown in the SE 1/4 of Section 30, T31S, R7W, 6th P.M., Harper County, Kansas.

BASIS OF ELEVATION

SPOT ELEVATION LOCATED AT THE NORTHEAST CORNER OF SECTION 22, T33S, R7W, 6th P.M. TAKEN FROM THE ANTHONY, QUADRANGLE, KANSAS, HARPER COUNTY, 7.5 MINUTE QUAD (TOPOGRAPHIC MAP) PUBLISHED BY THE UNITED STATES DEPARTMENT OF THE INTERIOR, GEOLOGICAL SURVEY. SVD ELEVATION IS MARKED AS BEING 1348 FEET.

BASIS OF BEARINGS

BASIS OF BEARINGS IS A G.P.S. OBSERVATION.



CERTIFICATE
 THIS IS TO CERTIFY THAT THE ABOVE-ENTITLED SURVEY WAS MADE FROM FIELD NOTES OF ACTUAL SURVEYS MADE BY ME OR UNDER MY SUPERVISION AND THAT THE SAME ARE TRUE AND CORRECT TO THE BEST OF MY KNOWLEDGE AND BELIEF.
 [Signature]
 STATE LAND SURVEYOR
 HARPER COUNTY, KANSAS
 07-09-12

- LEGEND:**
- └─ = 90° SYMBOL
 - = PROPOSED WELL HEAD.
 - ▲ = SECTION CORNERS LOCATED.

UTPLAN ENGINEERING & LAND SURVEYING 85 SOUTH 200 EAST - VERNAL, UTAH 84098 (435) 789-1017		
SCALE 1" = 1000'	DATE SURVEYED 07-09-12	DATE DRAWN 09-24-12
PARTY L.S. K.H. C.A.G.	REFERENCE G.L.C. PLAT	
WEATHER COOL	FILE SGOMI	

NAD 83 (430)-2H AS DRILLED BOTTOM HOLE	NAD 83 (430)-2H SURFACE LOCATION
LATITUDE = 37°17'55.57" (37.298788)	LATITUDE = 37°18'44.75" (37.312441)
LONGITUDE = 98°07'22.19" (98.122831)	LONGITUDE = 98°07'32.05" (98.122265)
NAD 27 (430)-2H AS DRILLED BOTTOM HOLE	NAD 27 (430)-2H SURFACE LOCATION
LATITUDE = 37°17'55.50" (37.298750)	LATITUDE = 37°18'44.80" (37.312441)
LONGITUDE = 98°07'20.81" (98.122481)	LONGITUDE = 98°07'30.80" (98.122480)
STATE PLAT NAD 83	STATE PLAT NAD 27
N: 23001353 E: 2102814.58	N: 23034737 E: 2102855.15