

RR  
87  
WW

T31S, R7W, 6th P.M.

SGOMI

1/2" Rebar  
NAD 27 Kansas South  
N: 240392.95  
E: 2112799.20

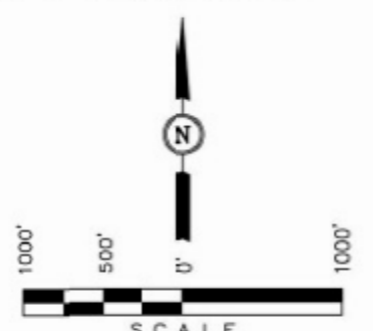
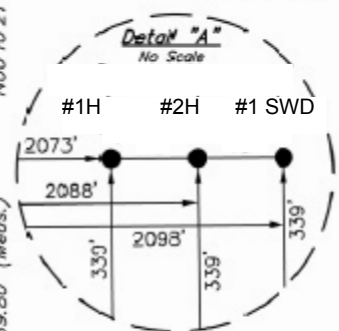
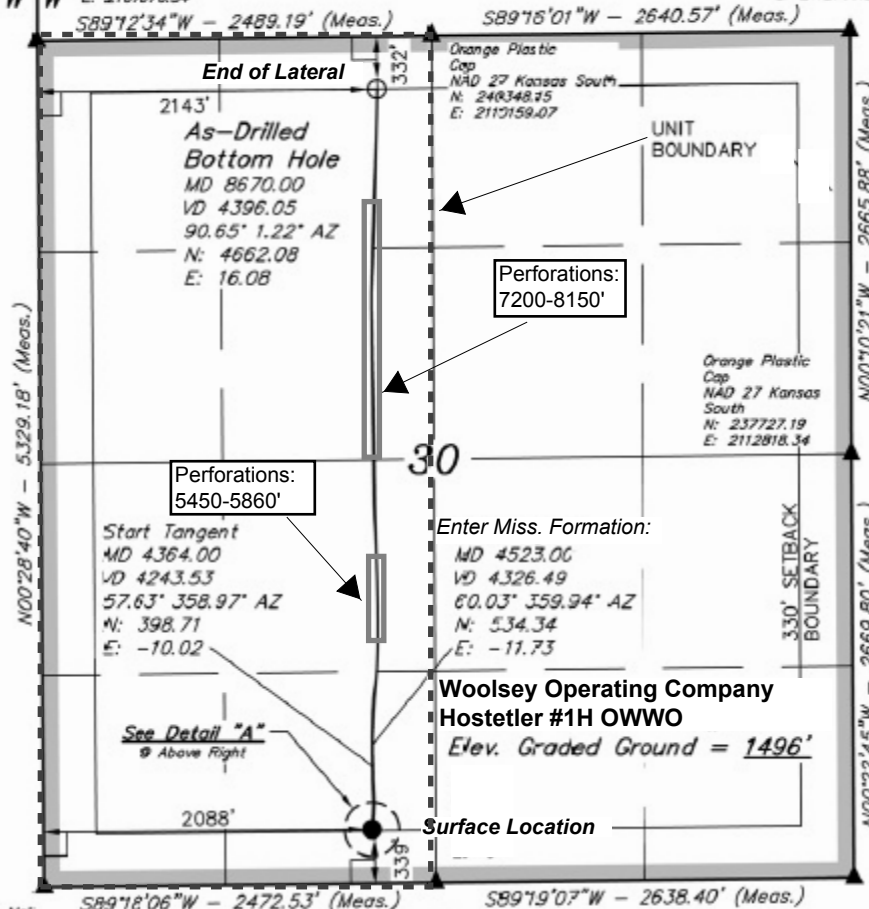
Well location, HOSTETLER #1H OWWO located as shown in the SE 1/4 SW 1/4 of Section 30, T31S, R7W, 6th P.M., Harper County, Kansas.

**BASIS OF ELEVATION**

SPOT ELEVATION LOCATED AT THE NORTHEAST CORNER OF SECTION 22, T33S, R7W, 6th P.M. TAKEN FROM THE ANTHONY, QUADRANGLE, KANSAS, HARPER COUNTY, 7.5 MINUTE Q.L.A.D. (TOPOGRAPHIC MAP) PUBLISHED BY THE UNITED STATES DEPARTMENT OF THE INTERIOR, GEOLOGICAL SURVEY. SAID ELEVATION IS MARKED AS BEING 1348 FEET.

**BASIS OF BEARINGS**

BASIS OF BEARINGS IS A C.P.S. OBSERVATION.



CERTIFICATE  
 THIS IS TO CERTIFY THAT THE ABOVE PLAN WAS PREPARED FROM FIELD NOTES OF ACTUAL SURVEYS MADE BY ME OR UNDER MY SUPERVISION AND THAT THE SAME ARE TRUE AND CORRECT TO THE BEST OF MY KNOWLEDGE AND BELIEF.  
 [Signature]  
 REGISTERED LAND SURVEYOR  
 REGISTRATION NO. 14154  
 STATE OF KANSAS  
 11-15-12

5/8" Rebar  
NAD 27 Kansas South  
N: 235017.60  
E: 2112847.13

**UINTAH ENGINEERING & LAND SURVEYING**  
 85 SOUTH 200 EAST - VERNAL, UTAH 84073  
 (435) 789-1017

**LEGEND:**  
 — = 90° SYMBOL  
 ● = PROPOSED WELL HEAD.  
 ▲ = SECTION CORNERS LOCATED.

NAD 83 (#30-1H AS DRILLED BOTTOM HOLE) LATITUDE = 37°19'33.84" (37.325233) LONGITUDE = 98°27'21.67" (98.455886)	NAD 83 (#30-1H SURFACE LOCATION) LATITUDE = 37°18'44.75" (37.312431) LONGITUDE = 98°07'21.87" (98.122742)
NAD 27 (#30-1H AS DRILLED BOTTOM HOLE) LATITUDE = 37°19'33.77" (37.325214) LONGITUDE = 98°27'20.44" (98.455844)	NAD 27 (#30-1H SURFACE LOCATION) LATITUDE = 37°18'44.67" (37.312408) LONGITUDE = 98°07'20.64" (98.122400)
STATE PLANE NAD 27 N: 240009.65 E: 2109817.17	STATE PLANE NAD 27 N: 135347.63 E: 2109820.51

SCALE 1" = 1000'	DATE SURVEYED: 04-27-12	DATE DRAWN: 09-24-12
PARTY L.S. K.H. C.A.G.	REFERENCES G.L.O. PLAT	
WEATHER WARM	FILE SGOMI	