



**TRILOBITE
TESTING, INC.**

DRILL STEM TEST REPORT

K3 Oil & Gas
24900 Pitkin Rd Ste 305
The Woodlands, TX 77386
ATTN: Randy Say

16-26S-11W Pratt
Meireis 8-16
Job Ticket: 63926 **DST#: 4**
Test Start: 2018.11.15 @ 10:54:00

GENERAL INFORMATION:

Formation: **Mississippian**
Deviated: No Whipstock: ft (KB)
Time Tool Opened: 12:56:50
Time Test Ended: 17:32:09

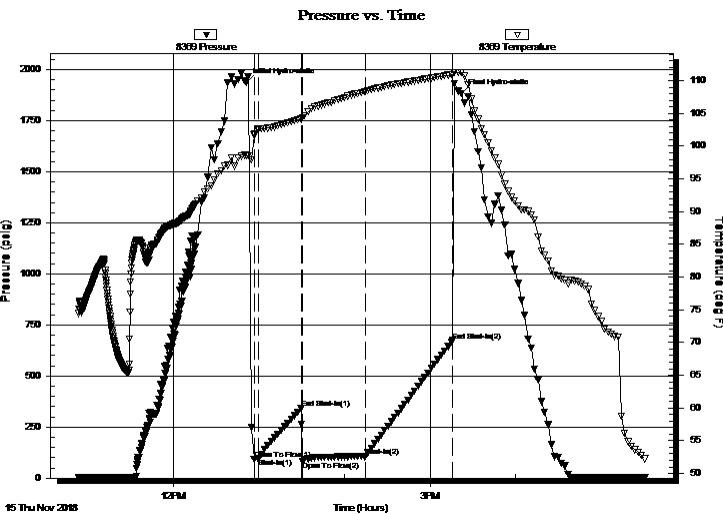
Test Type: Conventional Bottom Hole (Initial)
Tester: Jimmy Ricketts
Unit No: 80

Interval: **4064.00 ft (KB) To 4105.00 ft (KB) (TVD)**
Reference Elevations: 1840.00 ft (KB)
Total Depth: 4105.00 ft (KB) (TVD) 1834.00 ft (CF)
Hole Diameter: 7.88 inches Hole Condition: Poor KB to GR/CF: 6.00 ft

Serial #: 8369 Outside

Press@RunDepth: 106.06 psig @ 4065.00 ft (KB) Capacity: 8000.00 psig
Start Date: 2018.11.15 End Date: 2018.11.15 Last Calib.: 1899.12.30
Start Time: 10:54:01 End Time: 17:32:10 Time On Btm: 2018.11.15 @ 12:51:10
Time Off Btm: 2018.11.15 @ 15:21:50

TEST COMMENT: IF - Weak blow building to strong blow 4 minutes into initial flow period. Continuing to build to 17 inches.
FF - Strong blow throughout final flow period. Continuing to build to 97 inches.
FS - 2 inch blow back during final shut-in period.
Fluid Sampler - 560 PSI with 15 ml fluid recovered 7% Oil and 93% Mud.



PRESSURE SUMMARY

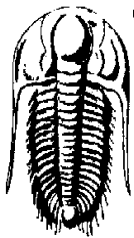
Time (Min.)	Pressure (psig)	Temp (deg F)	Annotation
0	1934.75	98.61	Initial Hydro-static
6	93.50	101.67	Open To Flow (1)
9	96.42	102.60	Shut-In(1)
39	340.80	104.10	End Shut-In(1)
40	81.75	104.31	Open To Flow (2)
84	106.06	108.38	Shut-In(2)
145	672.54	110.96	End Shut-In(2)
151	1881.82	111.26	Final Hydro-static

Recovery

Length (ft)	Description	Volume (bbl)
200.00	Oil cut mud 1% O & 99% M	1.74
940.00	Gas in pipe 100% G	13.19

Gas Rates

	Choke (inches)	Pressure (psig)	Gas Rate (MMcf/d)



TRILOBITE TESTING, INC.

DRILL STEM TEST REPORT

K3 Oil & Gas
24900 Pitkin Rd Ste 305
The Woodlands, TX 77386

ATTN: Randy Say

16-26S-11W Pratt
Meireis 8-16
Job Ticket: 63926 **DST#: 4**
Test Start: 2018.11.15 @ 10:54:00

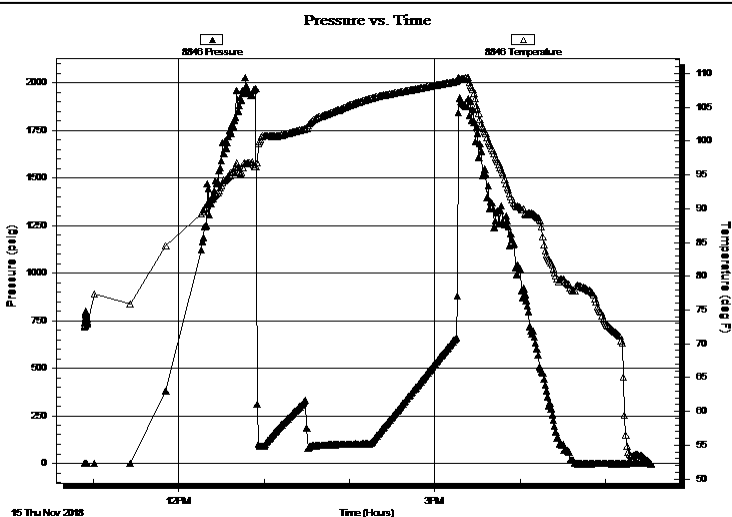
GENERAL INFORMATION:

Formation: **Mississippian**
Deviated: No Whipstock: ft (KB) Test Type: Conventional Bottom Hole (Initial)
Time Tool Opened: 12:56:50 Tester: Jimmy Ricketts
Time Test Ended: 17:32:09 Unit No: 80

Interval: **4064.00 ft (KB) To 4105.00 ft (KB) (TVD)** Reference Elevations: 1840.00 ft (KB)
Total Depth: 4105.00 ft (KB) (TVD) 1834.00 ft (CF)
Hole Diameter: 7.88 inches Hole Condition: Poor KB to GR/CF: 6.00 ft

Serial #: 8846 **Inside**
Press@RunDepth: psig @ 4065.00 ft (KB) Capacity: 8000.00 psig
Start Date: 2018.11.15 End Date: 2018.11.15 Last Calib.: 1899.12.30
Start Time: 10:54:01 End Time: 17:32:10 Time On Btm:
Time Off Btm:

TEST COMMENT: IF - Weak blow building to strong blow 4 minutes into initial flow period. Continuing to build to 17 inches.
FF - Strong blow throughout final flow period. Continuing to build to 97 inches.
FS - 2 inch blow back during final shut-in period.
Fluid Sampler - 560 PSI with 15 ml fluid recovered 7% Oil and 93% Mud.



PRESSURE SUMMARY

Time (Min.)	Pressure (psig)	Temp (deg F)	Annotation

Recovery

Length (ft)	Description	Volume (bbl)
200.00	Oil cut mud 1% O & 99% M	1.74
940.00	Gas in pipe 100% G	13.19

Gas Rates

Choke (inches)	Pressure (psig)	Gas Rate (MMcf/d)



**TRILOBITE
TESTING, INC.**

DRILL STEM TEST REPORT

FLUID SUMMARY

K3 Oil & Gas
24900 Pitkin Rd Ste 305
The Woodlands, TX 77386
ATTN: Randy Say

16-26S-11W Pratt
Meireis 8-16
Job Ticket: 63926 **DST#: 4**
Test Start: 2018.11.15 @ 10:54:00

Mud and Cushion Information

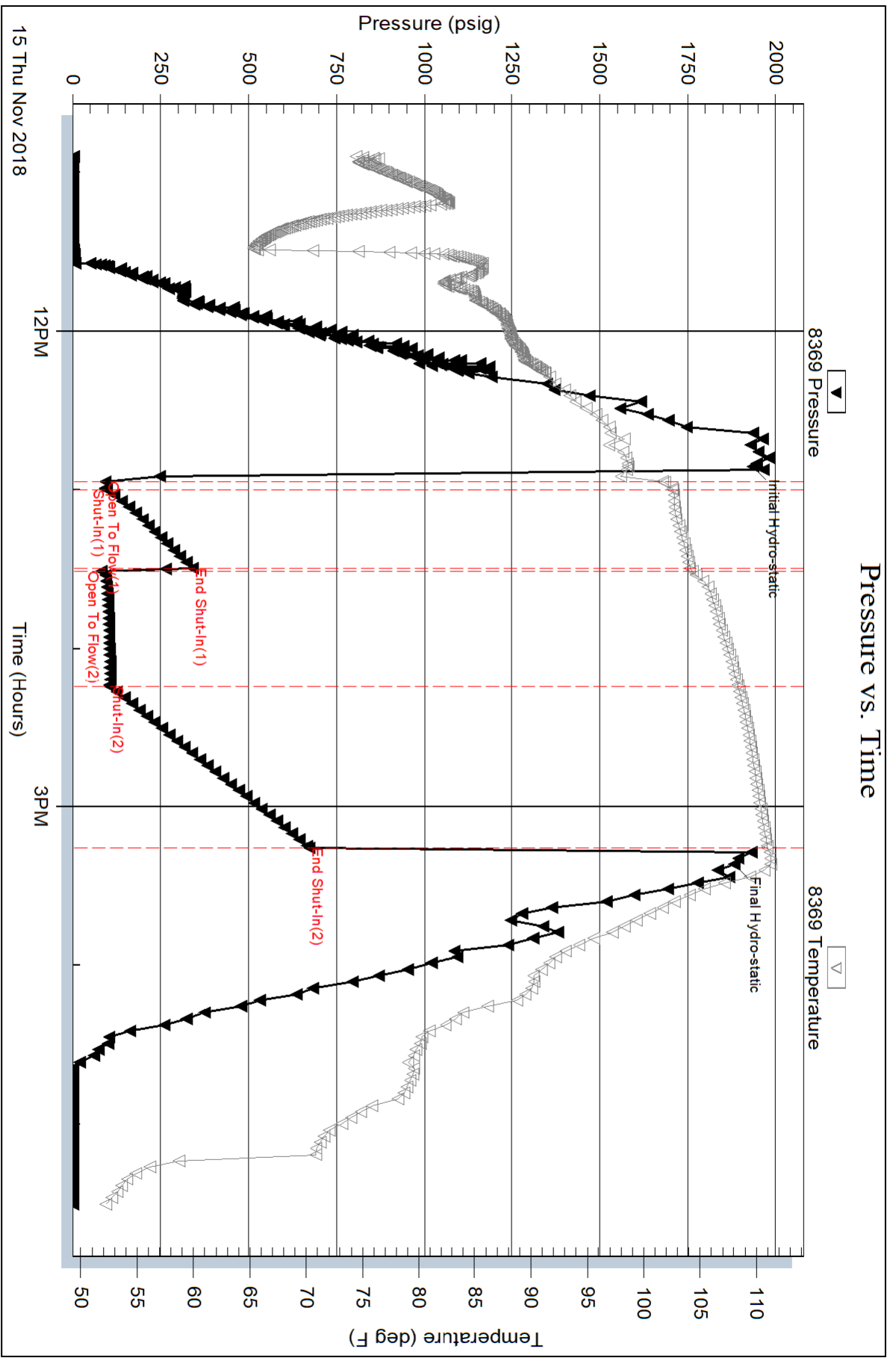
Mud Type: Gel Chem	Cushion Type:	Oil API:	deg API
Mud Weight: 9.00 lb/gal	Cushion Length: ft	Water Salinity:	ppm
Viscosity: 56.00 sec/qt	Cushion Volume: bbl		
Water Loss: 13.59 in ³	Gas Cushion Type:		
Resistivity: ohm.m	Gas Cushion Pressure: psig		
Salinity: 10000.00 ppm			
Filter Cake: inches			

Recovery Information

Recovery Table

Length ft	Description	Volume bbl
200.00	Oil cut mud 1% O & 99% M	1.740
940.00	Gas in pipe 100% G	13.186

Total Length: 1140.00 ft Total Volume: 14.926 bbl
Num Fluid Samples: 0 Num Gas Bombs: 0 Serial #:
Laboratory Name: Laboratory Location:
Recovery Comments:



Serial #: 8846

Inside

K3 Oil & Gas

Meireis 8-16

DST Test Number: 4

