

KANSAS CORPORATION COMMISSION
OIL & GAS CONSERVATION DIVISION

TEMPORARY ABANDONMENT WELL APPLICATION

OPERATOR: License#
Name:
Address 1:
Address 2:
City: State: Zip:
Contact Person:
Phone:
Contact Person Email:
Field Contact Person:
Field Contact Person Phone:

API No. 15-
Spot Description:
Sec. Twp. S. R.
GPS Location: Lat: Long:
Datum: NAD27 NAD83 WGS84
County: Elevation:
Lease Name: Well #:
Well Type: Oil Gas OG WSW Other:
SWD Permit #: ENHR Permit #:
Gas Storage Permit #:
Spud Date: Date Shut-In:

Table with 7 columns: Conductor, Surface, Production, Intermediate, Liner, Tubing. Rows include Size, Setting Depth, Amount of Cement, Top of Cement, Bottom of Cement.

Casing Fluid Level from Surface: How Determined? Date:
Casing Squeeze(s): to w / sacks of cement, to w / sacks of cement. Date:
Do you have a valid Oil & Gas Lease? Yes No
Depth and Type: Junk in Hole at Tools in Hole at Casing Leaks: Yes No Depth of casing leak(s):
Type Completion: ALT. I ALT. II Depth of: DV Tool: w / sacks of cement Port Collar: w / sack of cement
Packer Type: Size: Inch Set at: Feet
Total Depth: Plug Back Depth: Plug Back Method:

Geological Data:

Table with 4 columns: Formation Name, Formation Top, Formation Base, Completion Information. Rows 1 and 2.

UNDER PENALTY OF PERJURY I HEREBY ATTEST THAT THE INFORMATION CONTAINED HEREIN IS TRUE AND CORRECT TO THE BEST OF MY KNOWLEDGE

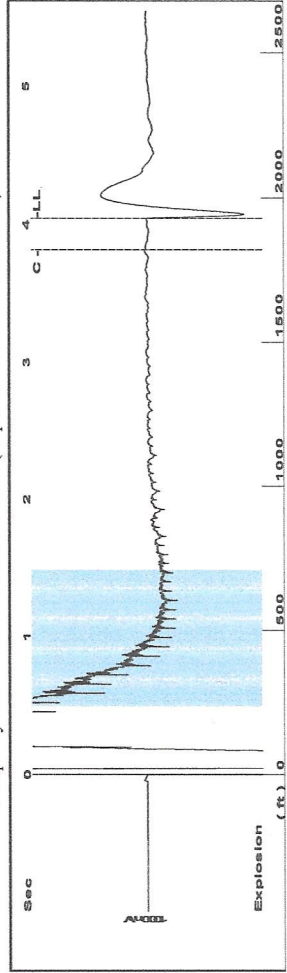
Submitted Electronically

Do NOT Write in This Space - KCC USE ONLY
Date Tested: Results: Date Plugged: Date Repaired: Date Put Back in Service:
Review Completed by: Comments:
TA Approved: Yes Denied Date:

Mail to the Appropriate KCC Conservation Office:

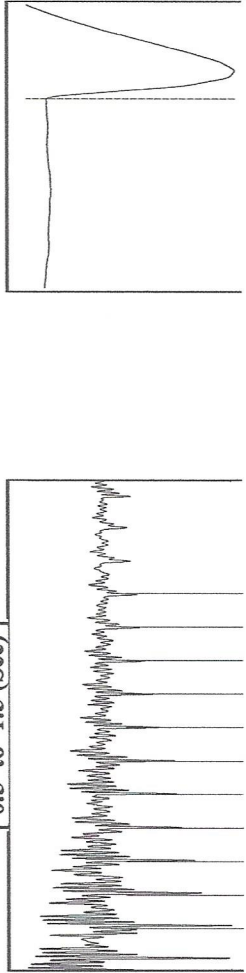
Table with 2 columns: Office Address, Phone. Rows for District Office #1, #2, #3, #4.

Group: MyWells Well: Graves Vance #2 (acquired on: 10/05/18 10:26:33)



Filter Type High Pass Automatic Collar Count Yes Time 4.047 sec
 Manual Acoustic Veloc 19,708 ft/s Manual JTS/sec 14,5985 Joints 61,2132 Jts
 Depth 1928.22 ft

[0.5 to 1.5 (Sec)]

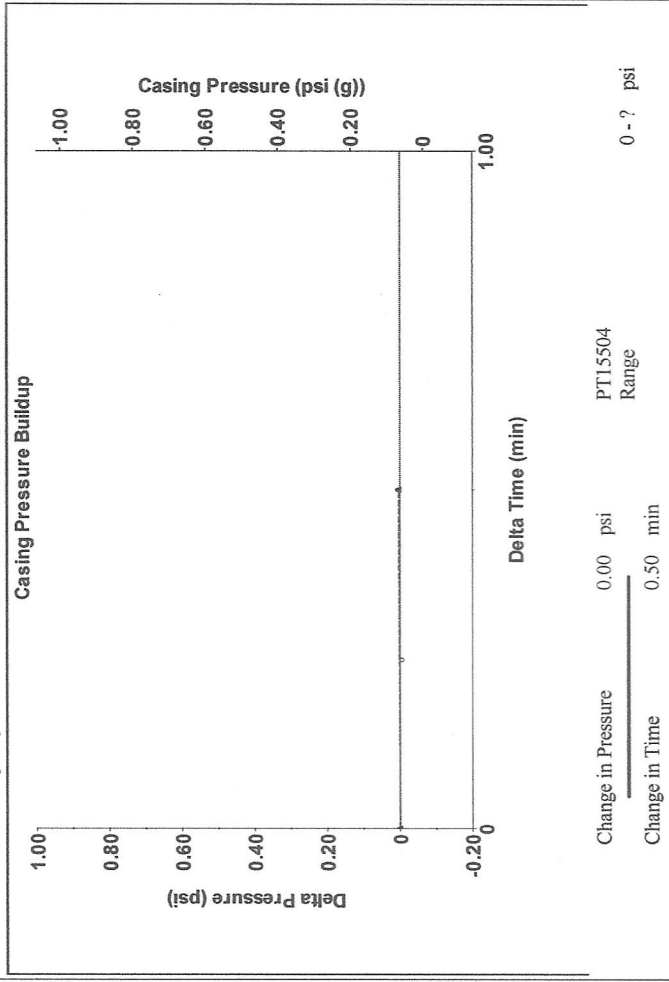


Analysis Method: Automatic

Group: MyWells Well: Graves Vance #2 (acquired on: 10/05/18 10:26:33)

| | | | |
|--------------------------------------|--------------|-------------------------------|-------------------|
| Production Current | Potential | Casing Pressure | Producing |
| Oil 0 | - * - BBL/D | 0.1 psi (g) | Annular |
| Water 0 | - * - BBL/D | Casing Pressure Buildup | Gas Flow 0 Mscf/D |
| Gas 0.0 | - * - Mscf/D | 0.004 psi | % Liquid 100 % |
| IPR Method | Vogel | 0.50 min | |
| PBHP/SBHP | - * - | Gas/Liquid Interface Pressure | |
| Production Efficiency | 0.0 | 1.1 psi (g) | |
| Oil 39 deg.API | | Liquid Level Depth | |
| Water 1.05 Sp.Gr.H2O | | 1928.22 ft | |
| Gas 1.02 Sp.Gr.AIR | | Pump Intake Depth | |
| Acoustic Velocity | 952.911 ft/s | 4765.00 ft | |
| | | Formation Depth | |
| | | 4334.00 ft | |
| Formation Submergence | | | Pump Intake |
| Total Caseous Liquid Column HT (TVD) | 2837 ft | | 1290.8 psi (g) |
| Equivalent Gas Free Liquid HT (TVD) | 2837 ft | | Producing BHP |
| Acoustic Test | | | 1094.9 psi (g) |
| | | | Static BHP |
| | | | - * - psi (g) |

Group: MyWells Well: Graves Vance #2 (acquired on: 10/05/18 10:26:33)



Change in Pressure 0.00 psi PT15504 Range
 Change in Time 0.50 min

Group: MyWells Well: Graves Vance #2 (acquired on: 10/05/18 10:26:33)

| | | | |
|------------------------|-----------------|------------------------|---------|
| Acoustic Velocity | 952.911 ft/s | Joints counted | 53 |
| Joints Per Second | 15.1256 jts/sec | Joints to liquid level | 61.2132 |
| Depth to liquid level | 1928.22 ft | Filter Width | 12.5985 |
| Automatic Collar Count | Yes | Time to 1st Collar | 0.316 |
| | | | 16.5985 |
| | | | 3.82 |

STATE OF KANSAS

CORPORATION COMMISSION
CONSERVATION DIVISION
DISTRICT No. 1
210 E. FRONTVIEW, SUITE A
DODGE CITY, KS 67801



PHONE: 620-682-7933
<http://kcc.ks.gov/>

GOVERNOR JEFF COLYER, M.D.

SHARI FEIST ALBRECHT, CHAIR | JAY SCOTT EMLER, COMMISSIONER | DWIGHT D. KEEN, COMMISSIONER

December 07, 2018

Chris Peters
Hartman Oil Co., Inc.
10500 E BERKELEY SQ PKWY STE 100
WICHITA, KS 67206-6816

Re: Temporary Abandonment
API 15-055-20102-00-00
GRAVES VANCE 2
NW/4 Sec.09-22S-33W
Finney County, Kansas

Dear Chris Peters:

"Your temporary abandonment (TA) application for the well listed above has been approved. In accordance with K.A.R. 82-3-111 the TA status of this well will expire 12/07/2019.

- * If you return this well to service or plug it, please notify the District Office.
- * If you sell this well you are required to file a Transfer of Operator form, T-1.
- * If the well will remain temporarily abandoned, you must submit a new TA application, CP-111, before 12/07/2019.

You may contact me at the number above if you have questions.

Very truly yours,

Michael Maier"