

KANSAS CORPORATION COMMISSION  
OIL & GAS CONSERVATION DIVISION

TEMPORARY ABANDONMENT WELL APPLICATION

OPERATOR: License# \_\_\_\_\_  
 Name: \_\_\_\_\_  
 Address 1: \_\_\_\_\_  
 Address 2: \_\_\_\_\_  
 City: \_\_\_\_\_ State: \_\_\_\_\_ Zip: \_\_\_\_\_ + \_\_\_\_\_  
 Contact Person: \_\_\_\_\_  
 Phone: ( \_\_\_\_\_ ) \_\_\_\_\_  
 Contact Person Email: \_\_\_\_\_  
 Field Contact Person: \_\_\_\_\_  
 Field Contact Person Phone: ( \_\_\_\_\_ ) \_\_\_\_\_

API No. 15- \_\_\_\_\_  
 Spot Description: \_\_\_\_\_  
 \_\_\_\_\_ - \_\_\_\_\_ - \_\_\_\_\_ - \_\_\_\_\_ Sec. \_\_\_\_\_ Twp. \_\_\_\_\_ S. R. \_\_\_\_\_  E  W  
 \_\_\_\_\_ feet from  N /  S Line of Section  
 \_\_\_\_\_ feet from  E /  W Line of Section  
 GPS Location: Lat: \_\_\_\_\_, Long: \_\_\_\_\_  
(e.g. xx.xxxxx) (e.g. -xxx.xxxxx)  
 Datum:  NAD27  NAD83  WGS84  
 County: \_\_\_\_\_ Elevation: \_\_\_\_\_  GL  KB  
 Lease Name: \_\_\_\_\_ Well #: \_\_\_\_\_  
 Well Type: (check one)  Oil  Gas  OG  WSW  Other: \_\_\_\_\_  
 SWD Permit #: \_\_\_\_\_  ENHR Permit #: \_\_\_\_\_  
 Gas Storage Permit #: \_\_\_\_\_  
 Spud Date: \_\_\_\_\_ Date Shut-In: \_\_\_\_\_

	Conductor	Surface	Production	Intermediate	Liner	Tubing
Size						
Setting Depth						
Amount of Cement						
Top of Cement						
Bottom of Cement						

Casing Fluid Level from Surface: \_\_\_\_\_ How Determined? \_\_\_\_\_ Date: \_\_\_\_\_  
 Casing Squeeze(s): \_\_\_\_\_ to \_\_\_\_\_ w / \_\_\_\_\_ sacks of cement, \_\_\_\_\_ to \_\_\_\_\_ w / \_\_\_\_\_ sacks of cement. Date: \_\_\_\_\_  
(top) (bottom) (top) (bottom)  
 Do you have a valid Oil & Gas Lease?  Yes  No  
 Depth and Type:  Junk in Hole at \_\_\_\_\_  Tools in Hole at \_\_\_\_\_ Casing Leaks:  Yes  No Depth of casing leak(s): \_\_\_\_\_  
(depth) (depth)  
 Type Completion:  ALT. I  ALT. II Depth of:  DV Tool: \_\_\_\_\_ w / \_\_\_\_\_ sacks of cement  Port Collar: \_\_\_\_\_ w / \_\_\_\_\_ sack of cement  
(depth) (depth)  
 Packer Type: \_\_\_\_\_ Size: \_\_\_\_\_ Inch Set at: \_\_\_\_\_ Feet  
 Total Depth: \_\_\_\_\_ Plug Back Depth: \_\_\_\_\_ Plug Back Method: \_\_\_\_\_

**Geological Data:**

Formation Name	Formation Top	Formation Base	Completion Information
1. _____	At: _____	to _____ Feet	Perforation Interval _____ to _____ Feet or Open Hole Interval _____ to _____ Feet
2. _____	At: _____	to _____ Feet	Perforation Interval _____ to _____ Feet or Open Hole Interval _____ to _____ Feet

UNDER PENALTY OF PERJURY I HEREBY ATTEST THAT THE INFORMATION CONTAINED HEREIN IS TRUE AND CORRECT TO THE BEST OF MY KNOWLEDGE

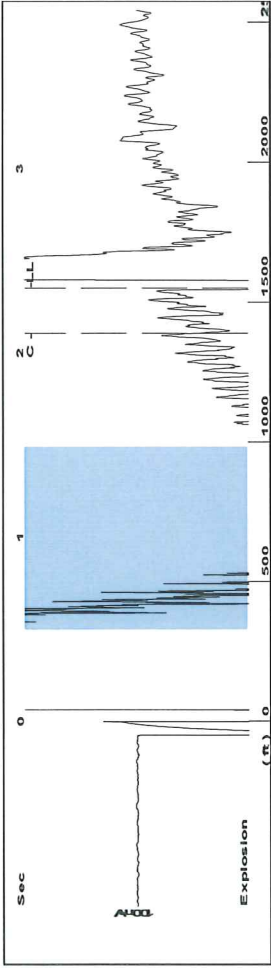
Submitted Electronically

<b>Do NOT Write in This Space - KCC USE ONLY</b>	Date Tested: _____	Results: _____	Date Plugged: _____	Date Repaired: _____	Date Put Back in Service: _____
	Review Completed by: _____ Comments: _____				
TA Approved: <input type="checkbox"/> Yes <input type="checkbox"/> Denied Date: _____					

Mail to the Appropriate KCC Conservation Office:

	KCC District Office #1 - 210 E. Frontview, Suite A, Dodge City, KS 67801	Phone 620.682.7933
	KCC District Office #2 - 3450 N. Rock Road, Building 600, Suite 601, Wichita, KS 67226	Phone 316.337.7400
	KCC District Office #3 - 137 E. 21st St., Chanute, KS 66720	Phone 620.902.6450
	KCC District Office #4 - 2301 E. 13th Street, Hays, KS 67601-2651	Phone 785.261.6250

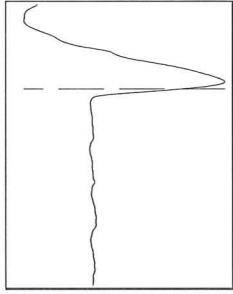
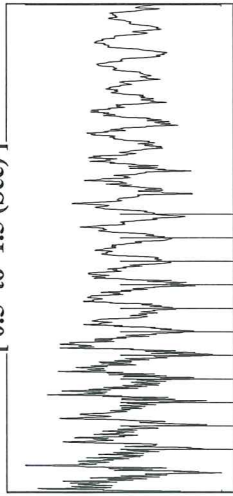
Group: MyWells Well: Voran #1 (trek) (acquired on: 11/20/18 17:19:37)



Filter Type High Pass Automatic Collar Count Yes  
 Manual Acoustic Velo 1315.35 ft/s Manual JTS/sec 20.7469

Time 2.352 sec  
 Joints 48.8928 Jts  
 Depth 1549.90 ft

[ 0.5 to 1.5 (Sec) ]

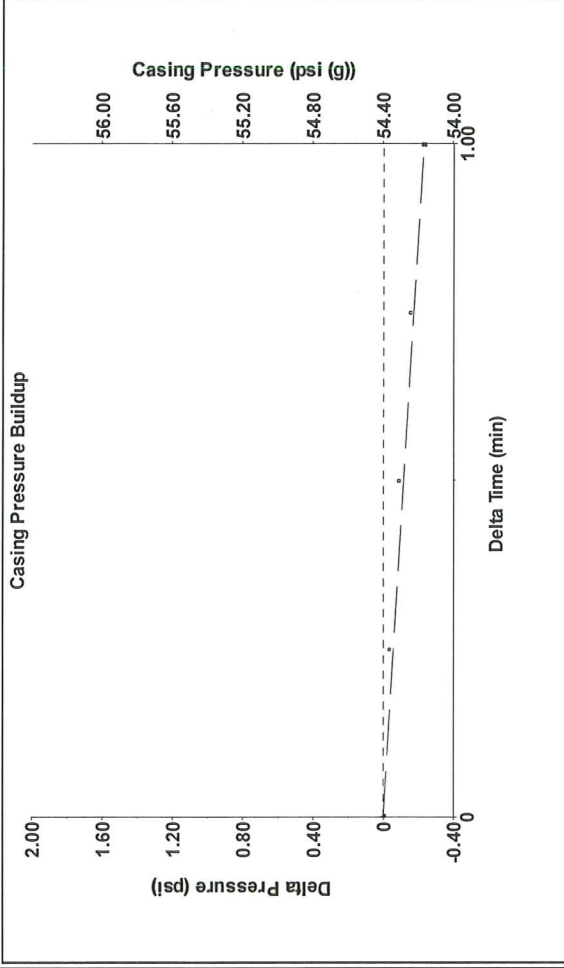


**Analysis Method: Automatic**

Group: MyWells Well: Voran #1 (trek) (acquired on: 11/20/18 17:19:37)

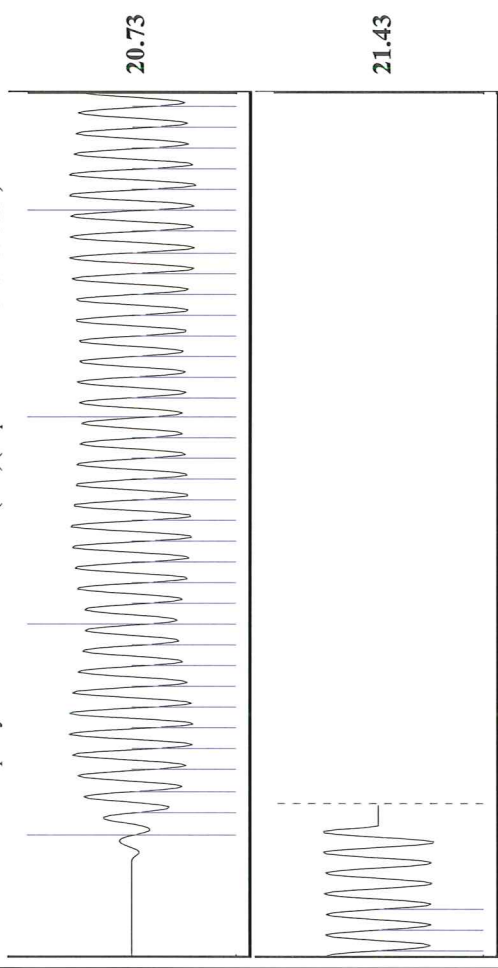
Production	Potential	Casing Pressure	54.4 psi (g)	Producing	Annular Gas Flow	0 Mscf/D
Oil - * -	BBL/D	Casing Pressure Buildup	-0.230 psi	Annular Gas Flow	% Liquid	100 %
Water - * -	Mscf/D	Gas/Liquid Interface Pressure	56.9 psi (g)	Producing BHP	Pump Intake	- * - psi (g)
Gas - * -	Vogel	Liquid Level Depth	1549.90 ft	Static BHP	Producing BHP	1079.5 psi (g)
IPR Method	Production Efficiency	Pump Intake Depth	- * - ft		Static BHP	- * - psi (g)
PBHP/SBHP	Oil 40 deg-API	Formation Depth	3799.00 ft			
Production Efficiency	Water 1.05 Sp.Gr.H2O					
Oil 40 deg-API	Gas 0.67 Sp.Gr.AIR					
Acoustic Velocity	1317.94 ft/s					
Formation Submergence						
Total Gaseous Liquid Column HT (TVD)	2249 ft					
Equivalent Gas Free Liquid HT (TVD)	2249 ft					
Acoustic Test						

Group: MyWells Well: Voran #1 (trek) (acquired on: 11/20/18 17:19:37)



Change in Pressure -0.23 psi PT4091 Range 0 - ? psi  
 Change in Time 1.00 min

Group: MyWells Well: Voran #1 (trek) (acquired on: 11/20/18 17:19:37)



Acoustic Velocity 1317.94 ft/s Joints counted 38  
 Joints Per Second 20.7877 Jts/sec Joints to liquid level 48.8928  
 Depth to liquid level 1549.9 ft Filter Width 18.7469  
 Automatic Collar Count Yes Time to 1st Collar 2.108

# STATE OF KANSAS

CORPORATION COMMISSION  
CONSERVATION DIVISION  
DISTRICT OFFICE No. 2  
3450 N. ROCK ROAD  
BUILDING 600, SUITE 601  
WICHITA, KS 67226



PHONE: 316-337-7400  
FAX: 316-630-4005  
<http://kcc.ks.gov/>

GOVERNOR JEFF COLYER, M.D.

SHARI FEIST ALBRECHT, CHAIR | JAY SCOTT EMLER, COMMISSIONER | DWIGHT D. KEEN, COMMISSIONER

January 08, 2019

Jon F. Messenger  
Messenger Petroleum, Inc.  
525 S MAIN ST  
KINGMAN, KS 67068-1968

Re: Temporary Abandonment  
API 15-155-20028-00-02  
VORAN 1  
NW/4 Sec.36-26S-07W  
Reno County, Kansas

Dear Jon F. Messenger:

"Your temporary abandonment (TA) application for the well listed above has been approved. In accordance with K.A.R. 82-3-111 the TA status of this well will expire 01/08/2020.

- \* If you return this well to service or plug it, please notify the District Office.
- \* If you sell this well you are required to file a Transfer of Operator form, T-1.
- \* If the well will remain temporarily abandoned, you must submit a new TA application, CP-111, before 01/08/2020.

You may contact me at the number above if you have questions.

Very truly yours,

BJ Hope"