

KANSAS CORPORATION COMMISSION
OIL & GAS CONSERVATION DIVISION

TEMPORARY ABANDONMENT WELL APPLICATION

OPERATOR: License#
Name:
Address 1:
Address 2:
City: State: Zip:
Contact Person:
Phone:
Contact Person Email:
Field Contact Person:
Field Contact Person Phone:

API No. 15-
Spot Description:
Sec. Twp. S. R.
feet from N / S Line of Section
feet from E / W Line of Section
GPS Location: Lat: , Long:
Datum: NAD27 NAD83 WGS84
County: Elevation: GL KB
Lease Name: Well #:
Well Type: (check one) Oil Gas OG WSW Other:
SWD Permit #: ENHR Permit #:
Gas Storage Permit #:
Spud Date: Date Shut-In:

Table with 7 columns: Conductor, Surface, Production, Intermediate, Liner, Tubing. Rows include Size, Setting Depth, Amount of Cement, Top of Cement, Bottom of Cement.

Casing Fluid Level from Surface: How Determined? Date:
Casing Squeeze(s): to w / sacks of cement, to w / sacks of cement. Date:
Do you have a valid Oil & Gas Lease? Yes No
Depth and Type: Junk in Hole at Tools in Hole at Casing Leaks: Yes No Depth of casing leak(s):
Type Completion: ALT. I ALT. II Depth of: DV Tool: w / sacks of cement Port Collar: w / sack of cement
Packer Type: Size: Inch Set at: Feet
Total Depth: Plug Back Depth: Plug Back Method:

Geological Data:

Table with 4 columns: Formation Name, Formation Top, Formation Base, Completion Information. Rows 1 and 2.

UNDER PENALTY OF PERJURY I HEREBY ATTEST THAT THE INFORMATION CONTAINED HEREIN IS TRUE AND CORRECT TO THE BEST OF MY KNOWLEDGE

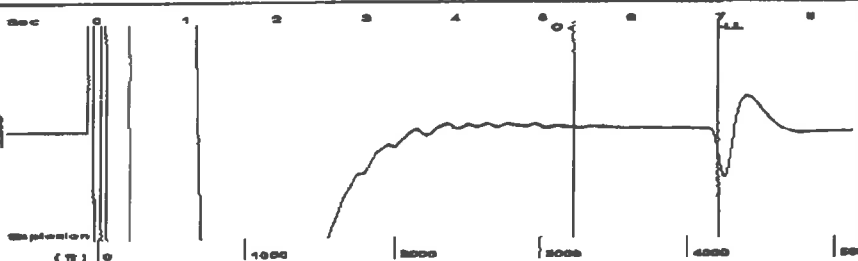
Submitted Electronically

Do NOT Write in This Space - KCC USE ONLY
Date Tested: Results: Date Plugged: Date Repaired: Date Put Back in Service:
Review Completed by: Comments:
TA Approved: Yes Denied Date:

Mail to the Appropriate KCC Conservation Office:

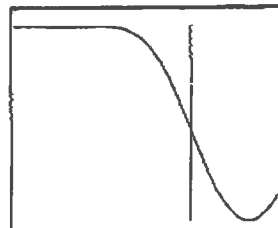
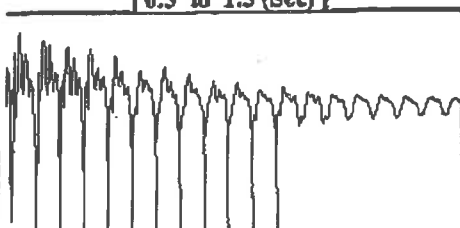
Table with 3 columns: District Office #, Address, Phone. Rows 1-4.

Group: Belpre Well: Grizzell 3-11 (acquired on: 01/08/19 14:07:02)



Filter Type High Pass Automatic Collar Count Yes Time 6.975 sec
 Manual Acoustic Velocity 201.91 ft/s Manual JTS/sec 19.1205 Joints 134.029 Jts
 Depth 4212.54 ft

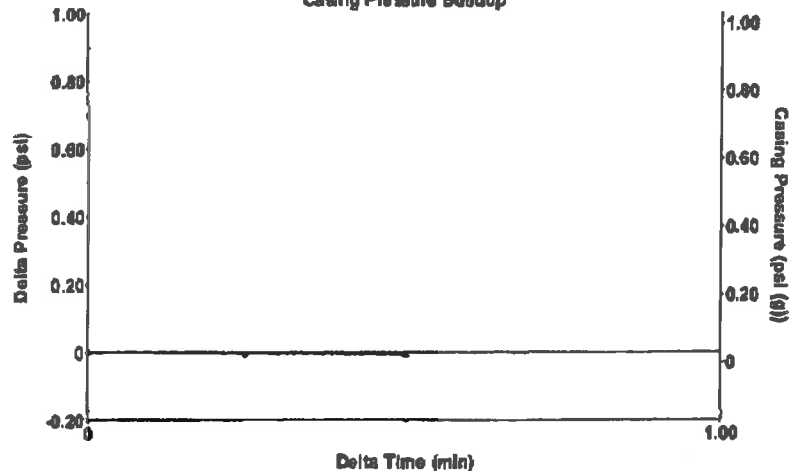
[0.5 to 1.5 (Sec)]



Analysis Method: Automatic

Group: Belpre Well: Grizzell 3-11 (acquired on: 01/08/19 14:07:02)

Casing Pressure Buildup



Change in Pressure -0.01 psi PT13440
 Change in Time 0.50 min Range 0-7 psi

Group: Belpre Well: Grizzell 3-11 (acquired on: 01/08/19 14:07:02)

Production		Casing Pressure	
Current	Potential	0.0 psi(g)	
Oil -.-	-.- BBL/D	Casing Pressure Buildup	
Water -.-	-.- BBL/D	-0.0 psi	
Gas -.-	-.- Mscf/D	0.50 min	
		Gas/Liquid Interface Pressure	
IPR Method	Vogel	1.8 psi(g)	
PBHP/SBHP	-.-		
Production Efficiency	0.0		
		Liquid Level Depth	
Oil 40 deg.API		4212.54 ft	
Water 1.05 Sp.Gr.H2O		Pump Intake Depth	
Gas 0.80 Sp.Gr.AIR		4338.00 ft	
Acoustic Velocity	1207.9 ft/s	Formation Depth	
		4290.00 ft	



Producing

Annular Gas Flow 0 Mscf/D

% Liquid 100 %

Pump Intake 44.4 psi(g)

Producing BHP 28.1 psi(g)

Static BHP -.- psi(g)

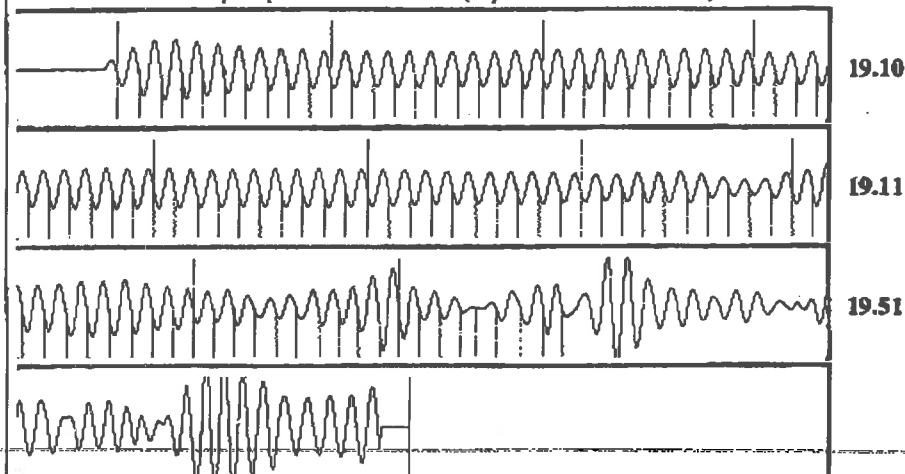
Formation Submergence

Total Gaseous Liquid Column HT (TVD) 125 ft

Equivalent Gas Free Liquid HT (TVD) 125 ft

Acoustic Test

Group: Belpre Well: Grizzell 3-11 (acquired on: 01/08/19 14:07:02)



Acoustic Velocity 1207.9 ft/s Joints counted 98

Joints Per Second 19.2157 jts/sec Joints to liquid level 134.029

Depth to liquid level 4212.54 ft Filter Width 17.1205

Automatic Collar Count Yes Time to 1st Collar 0.248 5.348

STATE OF KANSAS

CORPORATION COMMISSION
CONSERVATION DIVISION
DISTRICT No. 1
210 E. FRONTVIEW, SUITE A
DODGE CITY, KS 67801



PHONE: 620-682-7933
<http://kcc.ks.gov/>

GOVERNOR JEFF COLYER, M.D.

SHARI FEIST ALBRECHT, CHAIR | JAY SCOTT EMLER, COMMISSIONER | DWIGHT D. KEEN, COMMISSIONER

January 15, 2019

Loveness Mpanje
F. G. Holl Company L.L.C.
9431 E CENTRAL STE 100
WICHITA, KS 67206-2563

Re: Temporary Abandonment
API 15-047-21215-00-01
GRIZZELLE 3-11
NE/4 Sec.11-24S-17W
Edwards County, Kansas

Dear Loveness Mpanje:

"Your temporary abandonment (TA) application for the well listed above has been approved. In accordance with K.A.R. 82-3-111 the TA status of this well will expire 01/15/2020.

- * If you return this well to service or plug it, please notify the District Office.
- * If you sell this well you are required to file a Transfer of Operator form, T-1.
- * If the well will remain temporarily abandoned, you must submit a new TA application, CP-111, before 01/15/2020.

You may contact me at the number above if you have questions.

Very truly yours,

Michael Maier"