

KANSAS CORPORATION COMMISSION
OIL & GAS CONSERVATION DIVISION

TEMPORARY ABANDONMENT WELL APPLICATION

OPERATOR: License# _____
 Name: _____
 Address 1: _____
 Address 2: _____
 City: _____ State: _____ Zip: _____ + _____
 Contact Person: _____
 Phone: (_____) _____
 Contact Person Email: _____
 Field Contact Person: _____
 Field Contact Person Phone: (_____) _____

API No. 15- _____
 Spot Description: _____
 _____ - _____ - _____ - _____ Sec. _____ Twp. _____ S. R. _____ E W
 _____ feet from N / S Line of Section
 _____ feet from E / W Line of Section
 GPS Location: Lat: _____, Long: _____
(e.g. xx.xxxxx) (e.g. -xxx.xxxxx)
 Datum: NAD27 NAD83 WGS84
 County: _____ Elevation: _____ GL KB
 Lease Name: _____ Well #: _____
 Well Type: (check one) Oil Gas OG WSW Other: _____
 SWD Permit #: _____ ENHR Permit #: _____
 Gas Storage Permit #: _____
 Spud Date: _____ Date Shut-In: _____

	Conductor	Surface	Production	Intermediate	Liner	Tubing
Size						
Setting Depth						
Amount of Cement						
Top of Cement						
Bottom of Cement						

Casing Fluid Level from Surface: _____ How Determined? _____ Date: _____
 Casing Squeeze(s): _____ to _____ w / _____ sacks of cement, _____ to _____ w / _____ sacks of cement. Date: _____
(top) (bottom) (top) (bottom)
 Do you have a valid Oil & Gas Lease? Yes No
 Depth and Type: Junk in Hole at _____ Tools in Hole at _____ Casing Leaks: Yes No Depth of casing leak(s): _____
(depth) (depth)
 Type Completion: ALT. I ALT. II Depth of: DV Tool: _____ w / _____ sacks of cement Port Collar: _____ w / _____ sack of cement
(depth) (depth)
 Packer Type: _____ Size: _____ Inch Set at: _____ Feet
 Total Depth: _____ Plug Back Depth: _____ Plug Back Method: _____

Geological Data:

Formation Name	Formation Top	Formation Base	Completion Information
1. _____	At: _____	to _____ Feet	Perforation Interval _____ to _____ Feet or Open Hole Interval _____ to _____ Feet
2. _____	At: _____	to _____ Feet	Perforation Interval _____ to _____ Feet or Open Hole Interval _____ to _____ Feet

UNDER PENALTY OF PERJURY I HEREBY ATTEST THAT THE INFORMATION CONTAINED HEREIN IS TRUE AND CORRECT TO THE BEST OF MY KNOWLEDGE

Submitted Electronically

Do NOT Write in This Space - KCC USE ONLY	Date Tested: _____	Results: _____	Date Plugged: _____	Date Repaired: _____	Date Put Back in Service: _____
	Review Completed by: _____ Comments: _____				
TA Approved: <input type="checkbox"/> Yes <input type="checkbox"/> Denied Date: _____					

Mail to the Appropriate KCC Conservation Office:

	KCC District Office #1 - 210 E. Frontview, Suite A, Dodge City, KS 67801	Phone 620.682.7933
	KCC District Office #2 - 3450 N. Rock Road, Building 600, Suite 601, Wichita, KS 67226	Phone 316.337.7400
	KCC District Office #3 - 137 E. 21st St., Chanute, KS 66720	Phone 620.902.6450
	KCC District Office #4 - 2301 E. 13th Street, Hays, KS 67601-2651	Phone 785.261.6250

Date: 6/11/15
 Preparer: KH
 Updated: 12/30/2016
 Lease #: _____

Wellname: **Dewey Trust 2-7 A**
 Field: NA
 County: Rawlins State: KS
 API: 15-153-21143

Footage: 2310 FWL; 2310' FNL
 Sec: 7
 Twp: 5S
 Rge: 35W

KB: 3246
 GL: 3241
 Diff: 5

CASING

Size	Weight	Grade	Depth	Cement	Date Cmt'd	Comment
8 5/8	23#	J-55	345	350	6/30/15	Cmt Circ.
5 1/2	15.5#	J-55	4894	225	7/13/15	TOC-CBL: 1890
DV			2927	400	7/13/15	

DST'S

DST-1 - 4376 - 4402; (LKC K & L)30:60:30:90 - IF BOB in 12 minutes, Return Surface Blow; FF BOB 8 minutes, Return 1.5 inches. Recovery 750' of Gas in Pipe, 60' of gassy muddy oil and 185' of gassy oil. IHP 2217; IFP 18-74 ISIP 1180; FFP 67-96; FFP 1119; BHT 140 Deg F. Oil gravity 37 API.

DST -2 4490-4524 (Pawnee); 30:60:30:60; IFP 3/4 inch blow; no return; FFP No Blow, no return; Recovered 5' of mud with oil spots; IHP 2232; IFP 14-17; ISIP 36; FFP 16-19; FSIP 27; BHT 134.

4570-98 Cherokee Limestone: 30:30:30:30, IF 1/8 inch blow, no return, FF, No blow, no return; Recovery 2' of mud: IHP 2304; IFP 18-15; ISIP 28; FFP 15-16; FSIP 22 BHT 133 F4570-98 Cherokee Limestone: 30:30:30:30, IF 1/8 inch blow, no return, FF, No blow, no return; Recovery 2' of mud: IHP 2304; IFP 18-15; ISIP 28; FFP 15-16; FSIP 22 BHT 133 F

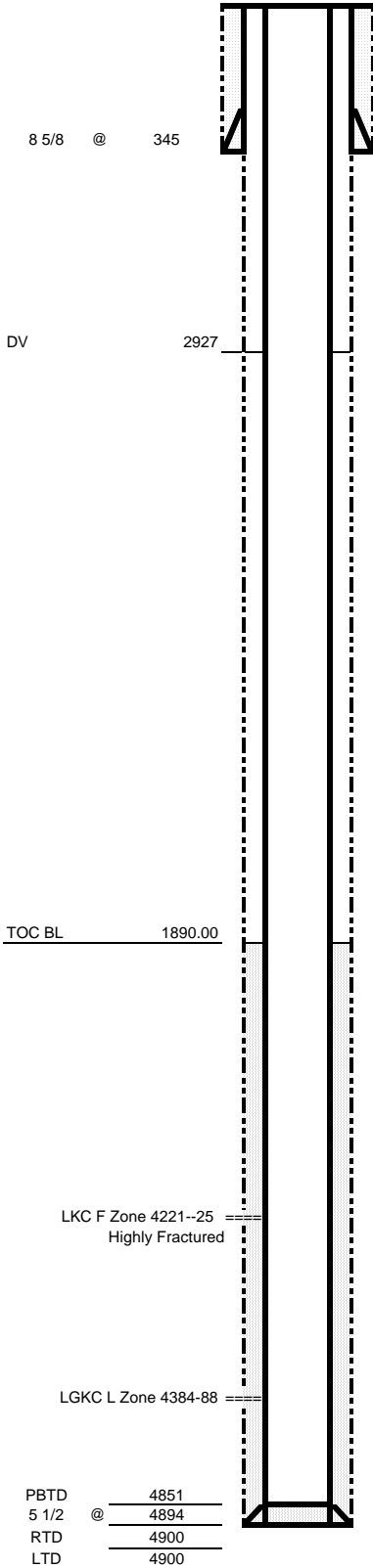
PERFORATIONS

Formation	Top	Btm	SPF	# of holes	Date	Status
LGKC F	4221	4225	4	16	7/29/15	Open Fractured
LGKC L	4384	4388	4	16	7/28/15	Open

COMPLETION

- 1 7/27/15 - Monday, attempted to move the rig in but was too wet after over night rains.
7/28/15 - Move in and rig up Quality Plus. Rig up Perf-tech. Run cement bond log. PBTD- 4851', Top of cement- 1890'. Swab casing down to 4400'. Put 14 1/4 Bbls of salt water out of swab tank down casing.
Perforate- 4384'-4388' (LGKC L), 4Spf. Tally in the hole with 5 1/2" packer and tubing. Rig up swab- tag fluid 3550' F.S., had 800' of fluid with 400' of oil. 1st hour test, 4 pulls, fluid lvl- 4300' F.S., no visible water, .58 Bbls.
Shut down for the day.
- 2 7/29/15 - Rig up Perf-Tech, **perforate 4221'-25'**, 4 Spf. Trip in the hole with tools set the plug at 4241' and set the packer at 4196'. Rig up swab- dry. Let set 1 hour- dry. Rig up S.O.S., spot 1 1/4 Bbls of acid. Let set 10 minutes. Finish acid and start flush. Hole loaded 1/2 Bbl late. Stage on acid to 500#. Shut well in with 800# (250 gal. 15% MCA. with 2% M.S.) Shut down for the day.
- 3 7/31/15 - Tag fluid 2900' F.S., had 1473' of fill up, Had 600' of oil. Swabbed down, 4 pulls, fluid lvl- 3950' F.S., 56% oil cut, 9.57 Bbls. Move tools over lower zone - 4384'-4388'. Rig up swab, tag 3450'. Pulled 800'. Zones communicated.
Set tools over both zones. Tag fluid- 3600' F.S., pulled 700' of oil and tied up water.
Swab down 3.77 Bbls
1st hour test, 4 pulls, fluid lvl- 4225' F.S., 57% oil cut, 2.61 Bbls
2nd hour test, 4 pulls, fluid lvl- 4250' F.S., 50% oil cut, 2.03 Bbls

Rigged up S.O.S., start acid, hole loaded at 23.2 Bbls. establish rate of .7 Bpm at 190#. Pressure increased to 250#. ISIP- 250#, 5 minutes- 120#, 10 minutes- 60#, 15 minutes- 20#, 20 minutes on a vac. Treated with 1500 gal. 15% N.E., total load- 61.7 Bbls. Let set 1 hour.
Tagged fluid 200' F.S., made 7 pulls. Last pull had a light show of oil.
1st hour test, 4 pulls, fluid lvl- 3950' F.S., 36% oil cut, 9.28 Bbls
Shut down for the day.
- 4 8-3-15 Quality Plus on location.
Tag fluid 1200' F.S., had 600' of oil. Swab down 22.04 Bbls
1st hour test, 4 pulls, fluid lvl- 3800' F.S., 15% oil cut, 8.12 Bbls
2nd hour test, 4 pulls, fluid lvl- 3800' F.S., 19% oil cut, 9.28 Bbls
3rd hour test, 4 pulls, fluid lvl- 3850' F.S., 22% oil cut, 6.67 Bbls
4th hour test, 4 pulls, fluid lvl- 3900' F.S., 20% oil cut, 5.8 Bbls
5th hour test, 4 pulls, fluid lvl- 3900' F.S., 20% oil cut, 6.38 Bbls
6th hour test, 4 pulls, fluid lvl- 3900' F.S., 20% oil cut, 6.38 Bbls
Released tools, tripped out of the hole with tubing and tools.
Shut down for the day.
- 5 8/3/15 - Quality Plus on location. Crawfords delivered down hole equipment. Put production head on casing and start in the hole. 15' x 2 7/8" mud anchor, 2 1/2" seating nipple, 16 joints of 2 7/8" tubing, 2 1/2" x 5 1/2" tubing anchor, 131 joints of 2 7/8" tubing. Run one extra joint and a 10' sub to tag bottom. Rig up swab made 6 pulls. Water did not have any acid in it. Pull 10' sub and joint. Set tubing anchor with 18" of stretch. Land tubing and rig over for rods. 6' gas anchor, 2 1/2" x 2" x 14' insert pump, 2' x 7/8" sub on pump, 10- 7/8" rods, 114- 3/4" rods, 66- 7/8", rods, 8', 6', 4' and 2' x 7/8" rod subs, 8' x 1 1/2" liner, 16' x 1 1/2" polish rod. Seat pump and long stroke well. Had a good blow.
Rigged Quality Plus down.
- 6 11/29/16 Unhooked pump from polished rod; attempted to long stroke, equipment froze up; pulled down hole equipment; discovered FeSO4; contacting chemical company to determine corrective action.
- 7 11/30/16 Shut down due to high wind, 40+ mph; assuming wind dies down on 12/1, plan to run production tubing back in then acidize with 500 gallons, swab and run back in.
- 8 12/1/16 Ran in production tubing, ran acid sweep across tubing, perms and casing with 500 gallons of 15% DSFE acid to clean up iron sulfide build-up. Ran pump and rods in hole. Put well on circulation over night.
- 9 12/1/16 well pumping early morning. 12/2-12/29/16 Online and pumping - 10 BO/day
- 10



Conservation Division
District Office No. 4
2301 E. 13th Street
Hays, KS 67601-2651



Phone: 785-261-6250
Fax: 785-625-0564
<http://kcc.ks.gov/>

Dwight D. Keen, Chair
Shari Feist Albrecht, Commissioner
Jay Scott Emler, Commissioner

Laura Kelly, Governor

April 12, 2019

Dillan Carney
Culbreath Oil & Gas Company, Inc.
3501 S Yale Ave
TULSA, OK 74135-8014

Re: Temporary Abandonment
API 15-153-21143-00-00
DEWEY TRUST 2-7 A
NW/4 Sec.07-05S-35W
Rawlins County, Kansas

Dear Dillan Carney:

"Your temporary abandonment (TA) application for the well listed above has been approved. In accordance with K.A.R. 82-3-111 the TA status of this well will expire 04/12/2020.

- * If you return this well to service or plug it, please notify the District Office.
- * If you sell this well you are required to file a Transfer of Operator form, T-1.
- * If the well will remain temporarily abandoned, you must submit a new TA application, CP-111, before 04/12/2020.

You may contact me at the number above if you have questions.

Very truly yours,

RICHARD WILLIAMS "