

KANSAS CORPORATION COMMISSION  
OIL & GAS CONSERVATION DIVISION

Form must be Typed

Form must be signed

All blanks must be complete

## TEMPORARY ABANDONMENT WELL APPLICATION

OPERATOR: License# \_\_\_\_\_

Name: \_\_\_\_\_

Address 1: \_\_\_\_\_

Address 2: \_\_\_\_\_

City: \_\_\_\_\_ State: \_\_\_\_\_ Zip: \_\_\_\_\_ + \_\_\_\_\_

Contact Person: \_\_\_\_\_

Phone: ( \_\_\_\_\_ ) \_\_\_\_\_

Contact Person Email: \_\_\_\_\_

Field Contact Person: \_\_\_\_\_

Field Contact Person Phone: ( \_\_\_\_\_ ) \_\_\_\_\_

API No. 15- \_\_\_\_\_

Spot Description: \_\_\_\_\_

\_\_\_\_ - \_\_\_\_ - \_\_\_\_ - \_\_\_\_ Sec. \_\_\_\_\_ Twp. \_\_\_\_\_ S. R. \_\_\_\_\_ ☐ E ☐ W\_\_\_\_\_ feet from ☐ N / ☐ S Line of Section\_\_\_\_\_ feet from ☐ E / ☐ W Line of Section

GPS Location: Lat: \_\_\_\_\_, Long: \_\_\_\_\_

(e.g. xx.xxxxx) (e.g. -xxx.xxxxx)

Datum: ☐ NAD27 ☐ NAD83 ☐ WGS84County: \_\_\_\_\_ Elevation: \_\_\_\_\_ ☐ GL ☐ KB

Lease Name: \_\_\_\_\_ Well #: \_\_\_\_\_

Well Type: (check one) ☐ Oil ☐ Gas ☐ OG ☐ WSW ☐ Other: \_\_\_\_\_☐ SWD Permit #: \_\_\_\_\_ ☐ ENHR Permit #: \_\_\_\_\_☐ Gas Storage Permit #: \_\_\_\_\_

Spud Date: \_\_\_\_\_ Date Shut-In: \_\_\_\_\_

	Conductor	Surface	Production	Intermediate	Liner	Tubing
Size						
Setting Depth						
Amount of Cement						
Top of Cement						
Bottom of Cement						

Casing Fluid Level from Surface: \_\_\_\_\_ How Determined? \_\_\_\_\_ Date: \_\_\_\_\_

Casing Squeeze(s): \_\_\_\_\_ to \_\_\_\_\_ w / \_\_\_\_\_ sacks of cement, \_\_\_\_\_ to \_\_\_\_\_ w / \_\_\_\_\_ sacks of cement. Date: \_\_\_\_\_  
(top) (bottom) (top) (bottom)Do you have a valid Oil & Gas Lease? ☐ Yes ☐ NoDepth and Type: ☐ Junk in Hole at \_\_\_\_\_ ☐ Tools in Hole at \_\_\_\_\_ Casing Leaks: ☐ Yes ☐ No Depth of casing leak(s): \_\_\_\_\_  
(depth) (depth)Type Completion: ☐ ALT. I ☐ ALT. II Depth of: ☐ DV Tool: \_\_\_\_\_ w / \_\_\_\_\_ sacks of cement ☐ Port Collar: \_\_\_\_\_ w / \_\_\_\_\_ sack of cement  
(depth) (depth)

Packer Type: \_\_\_\_\_ Size: \_\_\_\_\_ Inch Set at: \_\_\_\_\_ Feet

Total Depth: \_\_\_\_\_ Plug Back Depth: \_\_\_\_\_ Plug Back Method: \_\_\_\_\_

**Geological Data:****Formation Name**

Formation Top Formation Base

Completion Information

1. \_\_\_\_\_ At: \_\_\_\_\_ to \_\_\_\_\_ Feet Perforation Interval \_\_\_\_\_ to \_\_\_\_\_ Feet or Open Hole Interval \_\_\_\_\_ to \_\_\_\_\_ Feet

2. \_\_\_\_\_ At: \_\_\_\_\_ to \_\_\_\_\_ Feet Perforation Interval \_\_\_\_\_ to \_\_\_\_\_ Feet or Open Hole Interval \_\_\_\_\_ to \_\_\_\_\_ Feet

UNDER PENALTY OF PERJURY I HEREBY ATTEST THAT THE INFORMATION CONTAINED HEREIN IS TRUE AND CORRECT TO THE BEST OF MY KNOWLEDGE

Submitted Electronically

**Do NOT Write in This  
Space - KCC USE ONLY**

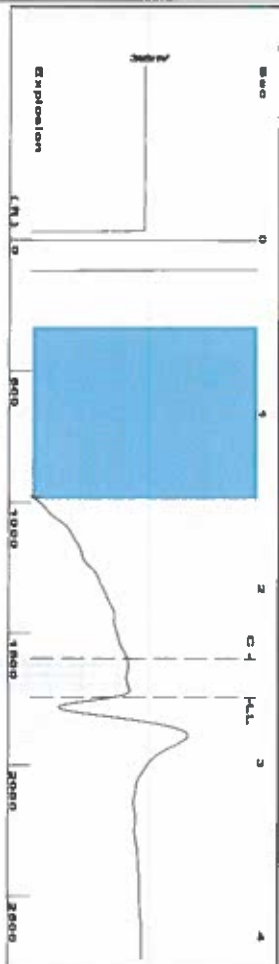
Date Tested: \_\_\_\_\_ Results: \_\_\_\_\_ Date Plugged: \_\_\_\_\_ Date Repaired: \_\_\_\_\_ Date Put Back in Service: \_\_\_\_\_

Review Completed by: \_\_\_\_\_ Comments: \_\_\_\_\_

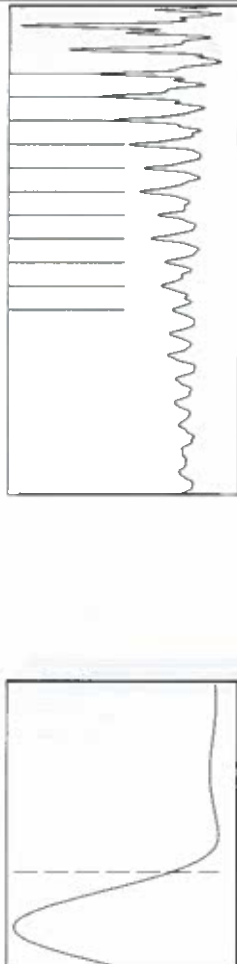
TA Approved: ☐ Yes ☐ Denied Date: \_\_\_\_\_**Mail to the Appropriate KCC Conservation Office:**

	KCC District Office #1 - 210 E. Frontview, Suite A, Dodge City, KS 67801	Phone 620.682.7933
	KCC District Office #2 - 3450 N. Rock Road, Building 600, Suite 601, Wichita, KS 67226	Phone 316.337.7400
	KCC District Office #3 - 137 E. 21st St., Chanute, KS 66720	Phone 620.902.6450
	KCC District Office #4 - 2301 E. 13th Street, Hays, KS 67601-2651	Phone 785.261.6250

Shot @  
MOR #55R



Filter Type	High Pass	Automatic Collar Count	Yes	Time
Manual Acoustic Veto	309.92 fl/s	Manual JTS/sec	20.6612	2.629 sec
				Joints 54.9744 J/s
				Depth 1742.69 ft

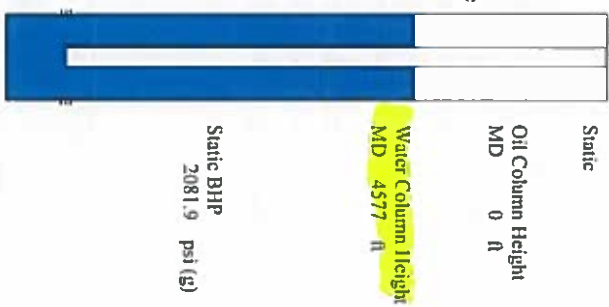


**Analysis Method: Automatic**

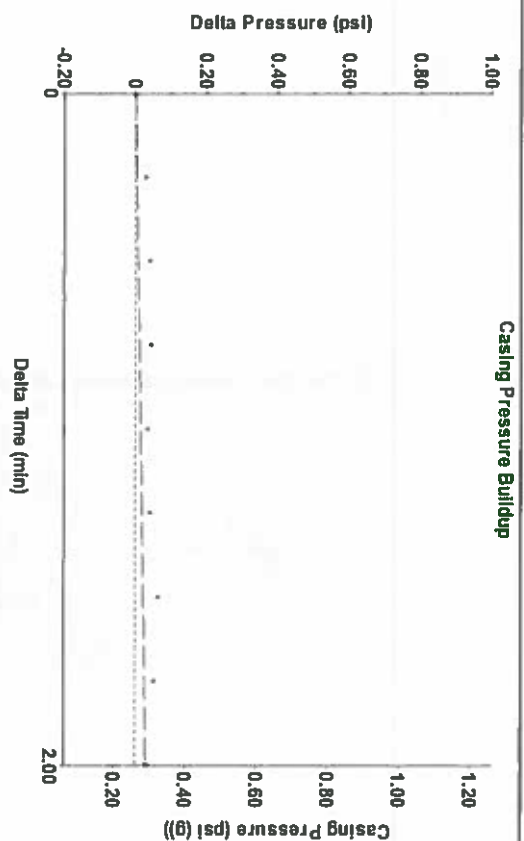
Group: Liberal TAd Wells Well: Underwood A-2 (acquired on: 12/17/18 15:31:00)

Current	Potential	Casing Pressure	Static
Oil - *	- -	0.3 psi (g)	
Water - *	- -	Casing Pressure Buildup	Oil Column Height
Gas - *	- -	0.031 psi	MD 0 ft
	MiscID	2.00 min	
IPR Method	Vogel	Gas/Liquid Interface Pressure	
PBHP/SBHP	- * -	0.9 psi (g)	
Production Efficiency	0.0		
Oil 40 deg API		Liquid Level Depth	Water Column Height
Water 1.05 Sp.Gr.H2O		1742.69 ft	MD 4577 ft
Gas 0.66 Sp.Gr.AIR		Pump Intake Depth	
		6320.00 ft	
Acoustic Velocity	1325.74 ft/s	Formation Depth	
		6320.00 ft	

### Acoustic Test

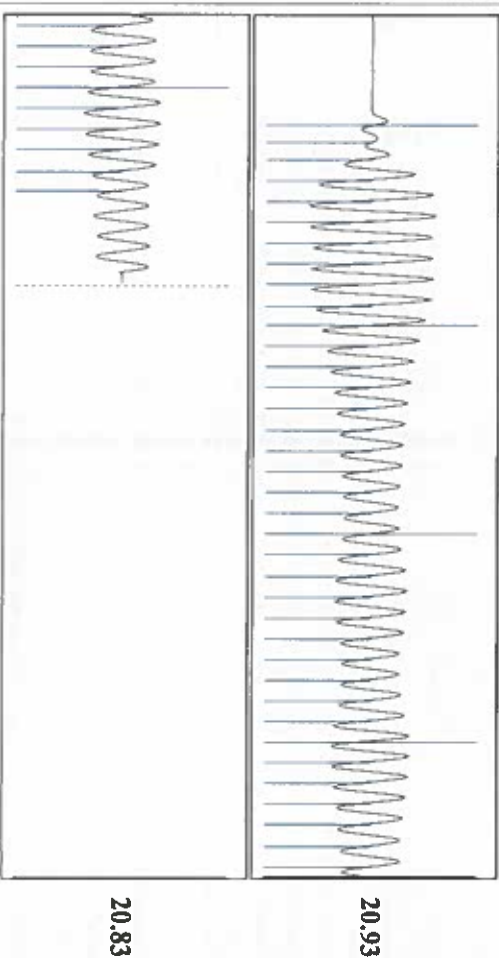


Group: Liberal T&D Wells      Well: Underwood A-2 (acquired on: 12/17/18 15:31:00)



Change in Pressure	0.03	psi	PT11249
<hr/>			
Change in Time	2.00	min	0 - ? psi

Group: Liberal TAd Wells      Well: Underwood A-2 (required on: 12/17/18 15:31:00)



Acoustic Velocity	1325.74	m/s	45	Joints counted
Joints Per Second	20.9108	jts/sec	54.9744	Joints to liquid level
Depth to liquid level	1742.69	ft	18.6612	Filler Width
Automatic Collar Count	Yes		0.256	Time to 1st Collar
				2.408

# STATE OF KANSAS

CORPORATION COMMISSION  
CONSERVATION DIVISION  
DISTRICT No. 1  
210 E. FRONTVIEW, SUITE A  
DODGE CITY, KS 67801



PHONE: 620-682-7933  
<http://kcc.ks.gov/>

GOVERNOR JEFF COLYER, M.D.

SHARI FEIST ALBRECHT, CHAIR | JAY SCOTT EMLER, COMMISSIONER | DWIGHT D. KEEN, COMMISSIONER

December 18, 2018

Katherine McClurkan  
Merit Energy Company, LLC  
13727 Noel Road, Suite 1200  
Dallas, TX 75240

Re: Temporary Abandonment  
API 15-175-20421-00-01  
Underwood A 2  
SW/4 Sec.23-34S-34W  
Seward County, Kansas

Dear Katherine McClurkan:

"Your temporary abandonment (TA) application for the well listed above has been approved. In accordance with K.A.R. 82-3-111 the TA status of this well will expire 12/18/2019.

- \* If you return this well to service or plug it, please notify the District Office.
- \* If you sell this well you are required to file a Transfer of Operator form, T-1.
- \* If the well will remain temporarily abandoned, you must submit a new TA application, CP-111, before 12/18/2019.

You may contact me at the number above if you have questions.

Very truly yours,

Michael Maier"