

KANSAS CORPORATION COMMISSION
OIL & GAS CONSERVATION DIVISION

Form must be Typed

Form must be signed

All blanks must be complete

TEMPORARY ABANDONMENT WELL APPLICATION

OPERATOR: License# _____

Name: _____

Address 1: _____

Address 2: _____

City: _____ State: _____ Zip: _____ + _____

Contact Person: _____

Phone: (_____) _____

Contact Person Email: _____

Field Contact Person: _____

Field Contact Person Phone: (_____) _____

API No. 15- _____

Spot Description: _____

____ - ____ - ____ - ____ Sec. _____ Twp. _____ S. R. _____ ☐ E ☐ W_____ feet from ☐ N / ☐ S Line of Section_____ feet from ☐ E / ☐ W Line of Section

GPS Location: Lat: _____, Long: _____

(e.g. xx.xxxxx) (e.g. -xxx.xxxxx)

Datum: ☐ NAD27 ☐ NAD83 ☐ WGS84County: _____ Elevation: _____ ☐ GL ☐ KB

Lease Name: _____ Well #: _____

Well Type: (check one) ☐ Oil ☐ Gas ☐ OG ☐ WSW ☐ Other: _____☐ SWD Permit #: _____ ☐ ENHR Permit #: _____☐ Gas Storage Permit #: _____

Spud Date: _____ Date Shut-In: _____

	Conductor	Surface	Production	Intermediate	Liner	Tubing
Size						
Setting Depth						
Amount of Cement						
Top of Cement						
Bottom of Cement						

Casing Fluid Level from Surface: _____ How Determined? _____ Date: _____

Casing Squeeze(s): _____ to _____ w / _____ sacks of cement, _____ to _____ w / _____ sacks of cement. Date: _____
(top) (bottom) (top) (bottom)Do you have a valid Oil & Gas Lease? ☐ Yes ☐ NoDepth and Type: ☐ Junk in Hole at _____ ☐ Tools in Hole at _____ Casing Leaks: ☐ Yes ☐ No Depth of casing leak(s): _____
(depth) (depth)Type Completion: ☐ ALT. I ☐ ALT. II Depth of: ☐ DV Tool: _____ w / _____ sacks of cement ☐ Port Collar: _____ w / _____ sack of cement
(depth) (depth)

Packer Type: _____ Size: _____ Inch Set at: _____ Feet

Total Depth: _____ Plug Back Depth: _____ Plug Back Method: _____

Geological Data:

Formation Name	Formation Top	Formation Base	Completion Information
1. _____	At: _____	to _____ Feet	Perforation Interval _____ to _____ Feet or Open Hole Interval _____ to _____ Feet
2. _____	At: _____	to _____ Feet	Perforation Interval _____ to _____ Feet or Open Hole Interval _____ to _____ Feet

UNDER PENALTY OF PERJURY I HEREBY ATTEST THAT THE INFORMATION CONTAINED HEREIN IS TRUE AND CORRECT TO THE BEST OF MY KNOWLEDGE

Submitted Electronically

**Do NOT Write in This
Space - KCC USE ONLY**

Date Tested: _____ Results: _____ Date Plugged: _____ Date Repaired: _____ Date Put Back in Service: _____

Review Completed by: _____ Comments: _____

TA Approved: ☐ Yes ☐ Denied Date: _____

Mail to the Appropriate KCC Conservation Office:

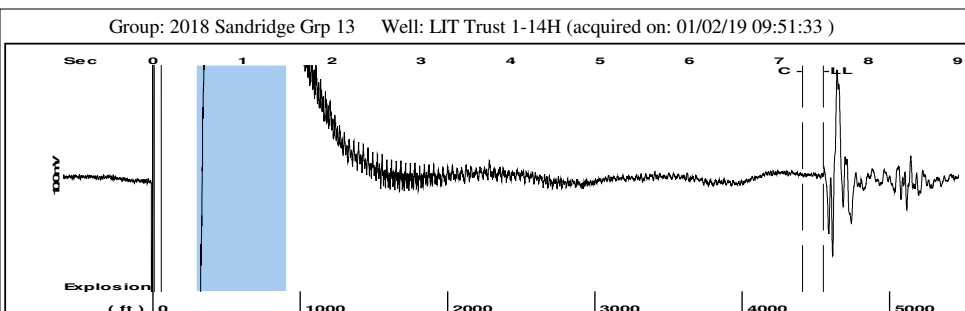
	KCC District Office #1 - 210 E. Frontview, Suite A, Dodge City, KS 67801	Phone 620.682.7933
	KCC District Office #2 - 3450 N. Rock Road, Building 600, Suite 601, Wichita, KS 67226	Phone 316.337.7400
	KCC District Office #3 - 137 E. 21st St., Chanute, KS 66720	Phone 620.902.6450
	KCC District Office #4 - 2301 E. 13th Street, Hays, KS 67601-2651	Phone 785.261.6250

General		
Well ID	120527	
Well	LIT Trust 1-14H	
Company	Sandridge	
Operator	- * -	
Lease Name	LIT Trust 1-14H	
Elevation	1258.00	ft
Production Method	Other	
Dataset Description		
Comment		

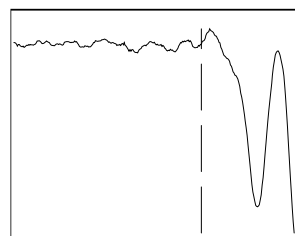
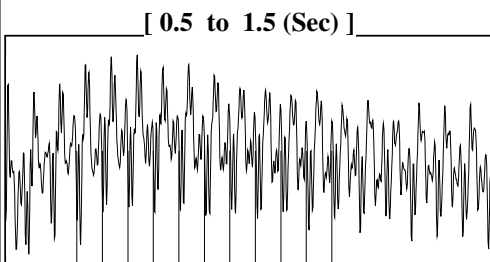
Surface Unit		
Manufacturer	- * -	
Unit Class	- * -	
Unit API Number	- * -	
Measured Stroke Length	100.000	in
Rotation	CW	
Counter Balance Effect (Weights Level)	- * -	Klb
Weight Of Counter Weights	2000	lb
Prime Mover		
Motor Type	Electric	
Rated HP	- * -	HP
Run Time	24	hr/day
MFG/Comment	- * -	
Electric Motor Parameters		
Rated Full Load AMPS	- * -	
Rated Full Load RPM	- * -	
Synchronous RPM	1200	
Voltage	- * -	
Hertz	60	
Phase	3	
Power Consumption	5	
Power Demand	8	\$/KW

Tubulars			Pump		
Tubing OD	2.875	in	Plunger Diameter	- * -	in
Casing OD	7.000	in	Pump Intake Depth	4836.00	ft
Average Joint Length	31.500	ft	**Total Rod Length < Pump Depth		
Anchor Depth	- * -	ft			
Kelly Bushing	20.00	ft			
Rod String			Polished Rod		
			Polished Rod Diameter	- * -	in
	</				

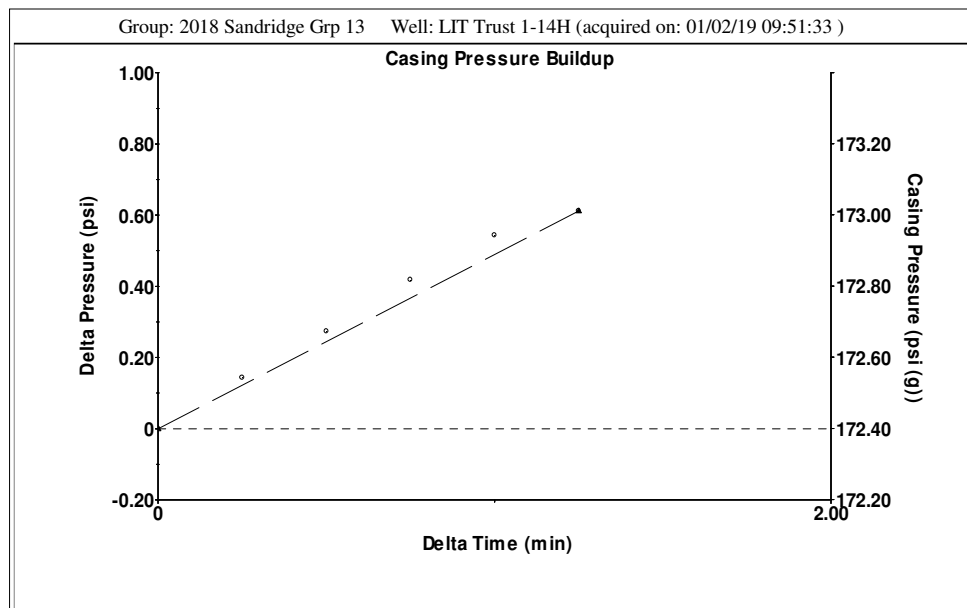
Conditions			
Pressure		Production	
Static BHP	532.6 psi (g)	Oil Production	0 BBL/D
Static BHP Method	Acoustic	Water Production	1 BBL/D
Static BHP Date	01/02/2019	Gas Production	- * - Mscf/D
		Production Date	12/06/2016
Producing BHP	- * - psi (g)		
Producing BHP Method	- * -	Temperatures	
Producing BHP Date	- * -	Surface Temperature	70 deg F
Formation Depth	5310.00 ft	Bottomhole Temperature	150 deg F
Surface Producing Pressures		Fluid Properties	
Tubing Pressure	60.0 psi (g)	Oil API	40 deg.API
Casing Pressure	172.4 psi (g)	Water Specific Gravity	1.05 Sp.Gr.H2O
Casing Pressure Buildup			
Change in Pressure	0.6 psi		
Over Change in Time	1.25 min		



Filter Type High Pass Automatic Collar Count Yes Time 7.499 sec
Manual Acoustic Veloc 1202.29 ft/s Manual JTS/sec 19.084 Joints 144.458 Jts
Depth 4550.44 ft



Analysis Method: Automatic



Change in Pressure 0.61 psi PT16722
Change in Time 1.25 min Range 0 - ? psi

Group: 2018 Sandridge Grp 13 Well: LIT Trust 1-14H (acquired on: 01/02/19 09:51:33)

Production		Potential		Casing Pressure			Static	
Oil	0	- *	BBL/D	172.4	psi (g)		Oil Column Height	MD 0 ft
Water	1	- *	BBL/D	0.6	psi		Gas/Liquid Interface Pressure	1.25 min
Gas	- *	- *	Mscf/D	196.4	psi (g)		Liquid Level Depth	4550.44 ft
IPR Method		Vogel		Gas/Liquid Interface Pressure		Water Column Height		
PBHP/SBHP		- *		196.4 psi (g)		MD 740 ft		
Production Efficiency		0.0		Tubing Intake Depth		Static BHP		
Oil	40 deg.API			4836.00 ft		532.6 psi (g)		
Water	1.05 Sp.Gr.H2O			Formation Depth				
Gas	0.76 Sp.Gr.AIR			5310.00 ft				
Acoustic Velocity		1213.61 ft/s						

LIT Trust 1-14H

Group: 2018 Sandridge Grp 13 Well: LIT Trust 1-14H (acquired on: 01/02/19 09:51:33)

Acoustic Velocity	1213.61 ft/s	Joints counted	135
Joints Per Second	19.2637 jts/sec	Joints to liquid level	144.458
Depth to liquid level	4550.44 ft	Filter Width	17.084 21.084
Automatic Collar Count	Yes	Time to 1st Collar	0.256 7.264

Conservation Division
District Office No. 2
3450 N. Rock Road
Building 600, Suite 601
Wichita, KS 67226



Phone: 316-337-7400
Fax: 316-630-4005
<http://kcc.ks.gov/>

Shari Feist Albrecht, Chair
Jay Scott Emler, Commissioner
Dwight D. Keen, Commissioner

Laura Kelly, Governor

January 17, 2019

Laci Bevans
SandRidge Exploration and Production LLC
123 ROBERT S. KERR AVE
OKLAHOMA CITY, OK 73102-6406

Re: Temporary Abandonment
API 15-077-21796-01-00
LIT TRUST 1-14H
SW/4 Sec.14-35S-08W
Harper County, Kansas

Dear Laci Bevans:

"Your temporary abandonment (TA) application for the well listed above has been approved. In accordance with K.A.R. 82-3-111 the TA status of this well will expire 01/17/2020.

- * If you return this well to service or plug it, please notify the District Office.
- * If you sell this well you are required to file a Transfer of Operator form, T-1.
- * If the well will remain temporarily abandoned, you must submit a new TA application, CP-111, before 01/17/2020.

You may contact me at the number above if you have questions.

Very truly yours,

Steve VanGieson"