

KANSAS CORPORATION COMMISSION OIL & GAS CONSERVATION DIVISION

Form must be Typed

Form must be signed

All blanks must be complete

TEMPORARY ABANDONMENT WELL APPLICATION

OPERATOR: License# _____

Name: _____

Address 1: _____

Address 2: _____

City: _____ State: _____ Zip: _____ + _____

Contact Person: _____

Phone: (_____) _____

Contact Person Email: _____

Field Contact Person: _____

Field Contact Person Phone: (_____) _____

API No. 15- _____

Spot Description: _____

____ - ____ - ____ - ____ Sec. _____ Twp. _____ S. R. _____ ☐ E ☐ W_____ feet from ☐ N / ☐ S Line of Section_____ feet from ☐ E / ☐ W Line of Section

GPS Location: Lat: _____, Long: _____

Datum: ☐ NAD27 ☐ NAD83 ☐ WGS84County: _____ Elevation: _____ ☐ GL ☐ KB

Lease Name: _____ Well #: _____

Well Type: (check one) ☐ Oil ☐ Gas ☐ OG ☐ WSW ☐ Other: _____☐ SWD Permit #: _____ ☐ ENHR Permit #: _____☐ Gas Storage Permit #: _____

Spud Date: _____ Date Shut-In: _____

	Conductor	Surface	Production	Intermediate	Liner	Tubing
Size						
Setting Depth						
Amount of Cement						
Top of Cement						
Bottom of Cement						

Casing Fluid Level from Surface: _____ How Determined? _____ Date: _____

Casing Squeeze(s): _____ to _____ w / _____ sacks of cement, _____ to _____ w / _____ sacks of cement. Date: _____

Do you have a valid Oil & Gas Lease? ☐ Yes ☐ NoDepth and Type: ☐ Junk in Hole at _____ ☐ Tools in Hole at _____ Casing Leaks: ☐ Yes ☐ No Depth of casing leak(s): _____Type Completion: ☐ ALT. I ☐ ALT. II Depth of: ☐ DV Tool: _____ w / _____ sacks of cement ☐ Port Collar: _____ w / _____ sack of cement

Packer Type: _____ Size: _____ Inch Set at: _____ Feet

Total Depth: _____ Plug Back Depth: _____ Plug Back Method: _____

Geological Data:

Formation Name	Formation Top	Formation Base	Completion Information
1. _____	At: _____ to _____ Feet	Perforation Interval _____ to _____ Feet or Open Hole Interval _____ to _____ Feet	
2. _____	At: _____ to _____ Feet	Perforation Interval _____ to _____ Feet or Open Hole Interval _____ to _____ Feet	

UNDER PENALTY OF PERJURY I HEREBY ATTEST THAT THE INFORMATION CONTAINED HEREIN IS TRUE AND CORRECT TO THE BEST OF MY KNOWLEDGE

Submitted Electronically

**Do NOT Write in This
Space - KCC USE ONLY**

Date Tested: _____ Results: _____ Date Plugged: _____ Date Repaired: _____ Date Put Back in Service: _____

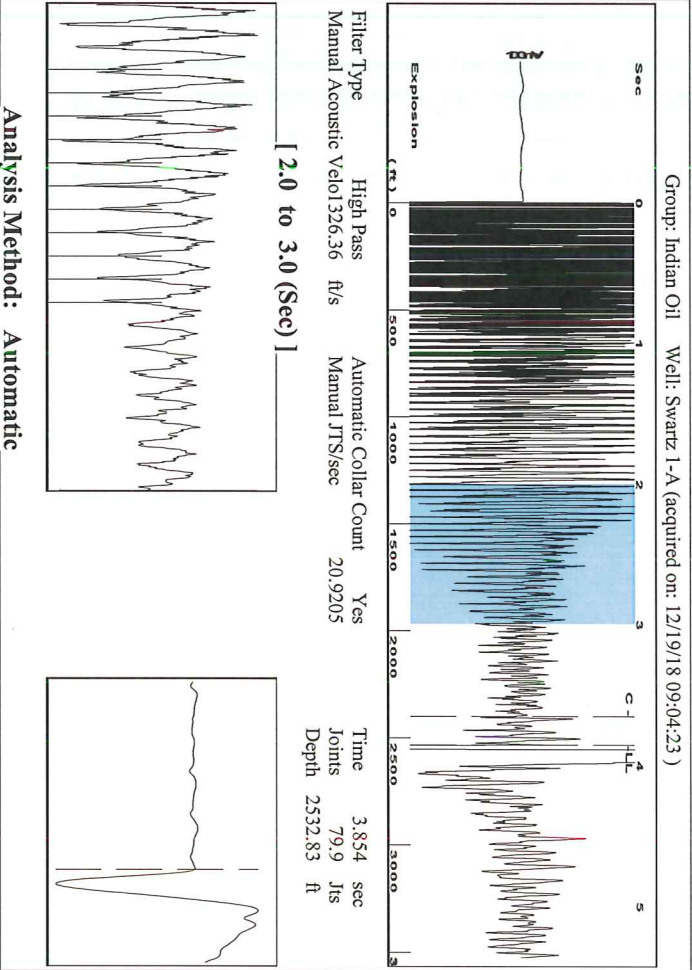
Review Completed by: _____ Comments: _____

TA Approved: ☐ Yes ☐ Denied Date: _____

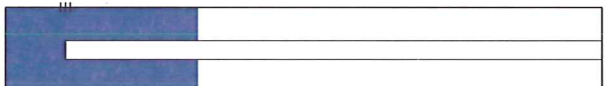
Mail to the Appropriate KCC Conservation Office:

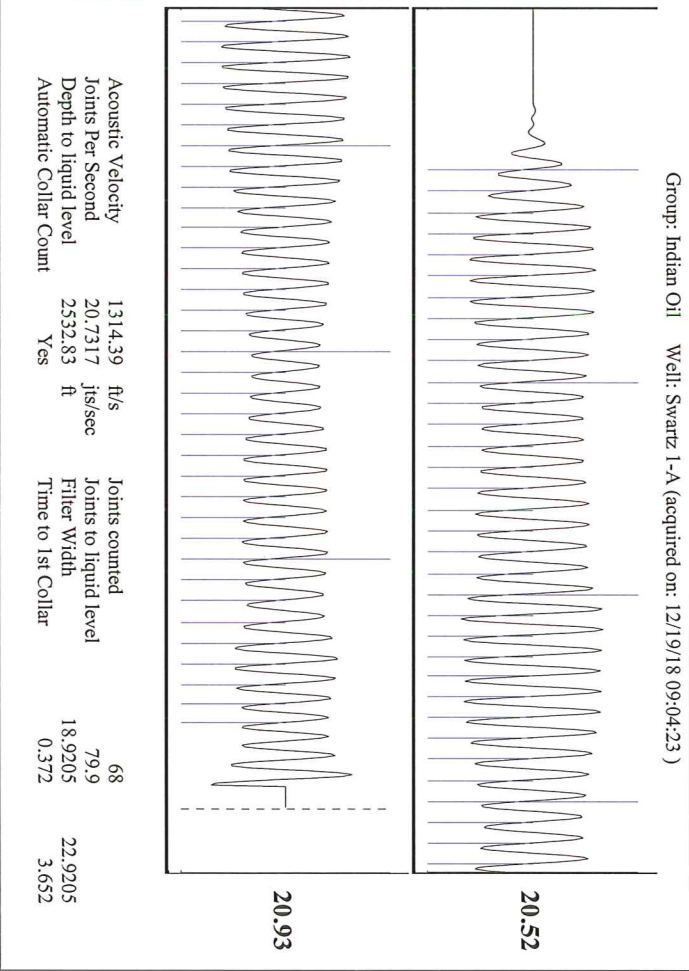
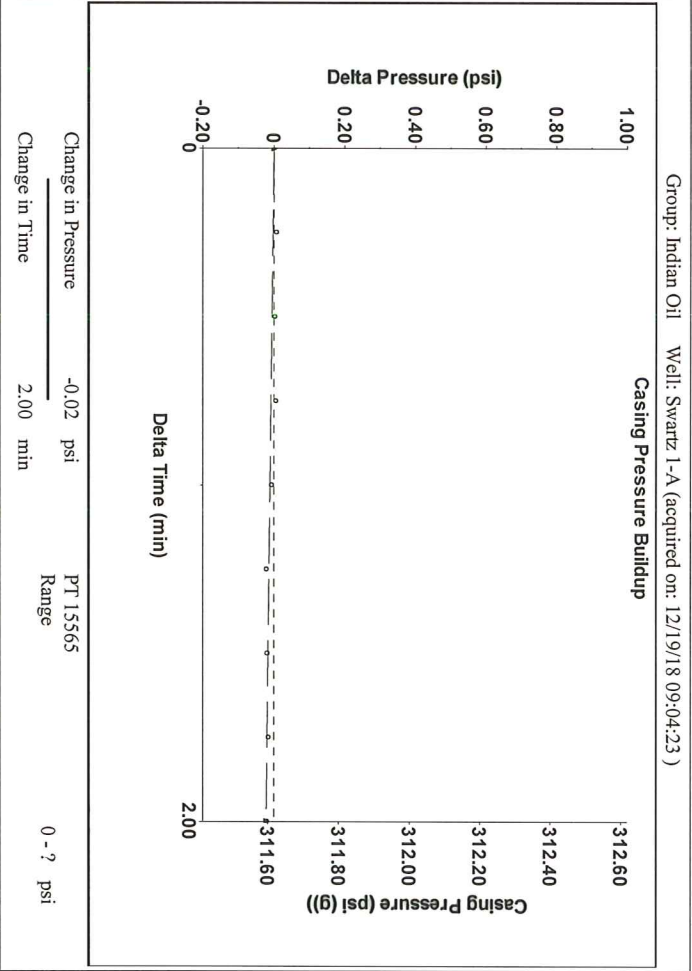
	KCC District Office #1 - 210 E. Frontview, Suite A, Dodge City, KS 67801	Phone 620.682.7933
	KCC District Office #2 - 3450 N. Rock Road, Building 600, Suite 601, Wichita, KS 67226	Phone 316.337.7400
	KCC District Office #3 - 137 E. 21st St., Chanute, KS 66720	Phone 620.902.6450
	KCC District Office #4 - 2301 E. 13th Street, Hays, KS 67601-2651	Phone 785.261.6250

Indian Oil Co., Inc.
Acoustic Fluid Level



Analysis Method: Automatic

Group: Indian Oil		Well: Swartz 1-A (acquired on: 12/19/18 09:04:23)	
Production			
Current	Potential	Casing Pressure	Producing
Oil 0	- *- BBL/D	311.6 psi (g)	
Water 30	- *- BBL/D	Casing Pressure Buildup	
Gas 5.0	- *- Mscf/D	-0.022 psi	
		2.00 min	
IPR Method	Vogel	Gas/Liquid Interface Pressure	Annular
PBHP/SBHP	- *-	331.4 psi (g)	Gas Flow 0 Mscf/D
Production Efficiency	0.0		% Liquid 100 %
Liqud Level Depth			
Oil 40 deg API		2532.83 ft	
Water 1.05 Sp.Gr.H2O		Pump Intake Depth	Pump Intake
Gas 0.66 Sp.Gr.AIR		3507.00 ft	774.3 psi (g)
Acoustic Velocity	1314.39 ft/s	Formation Depth	Producing BHP
		3506.00 ft	773.8 psi (g)
			Static BHP
			- *- psi (g)
Formation Submergence			
Total Gaseous Liquid Column HT (TVD)		974 ft	
Equivalent Gas Free Liquid HT (TVD)		974 ft	
12-19-18			



STATE OF KANSAS

CORPORATION COMMISSION
CONSERVATION DIVISION
DISTRICT No. 1
210 E. FRONTVIEW, SUITE A
DODGE CITY, KS 67801



PHONE: 620-682-7933
<http://kcc.ks.gov/>

GOVERNOR JEFF COLYER, M.D.

SHARI FEIST ALBRECHT, CHAIR | JAY SCOTT EMLER, COMMISSIONER | DWIGHT D. KEEN, COMMISSIONER

December 26, 2018

Anthony Farrar
Indian Oil Co., Inc.
2507 SE US HWY 160
PO BOX 209
MEDICINE LODGE, KS 67104-0209

Re: Temporary Abandonment
API 15-007-22461-00-01
SWARTZ 1A
NE/4 Sec.31-31S-11W
Barber County, Kansas

Dear Anthony Farrar:

"Your temporary abandonment (TA) application for the well listed above has been approved. In accordance with K.A.R. 82-3-111 the TA status of this well will expire 12/26/2019.

- * If you return this well to service or plug it, please notify the District Office.
- * If you sell this well you are required to file a Transfer of Operator form, T-1.
- * If the well will remain temporarily abandoned, you must submit a new TA application, CP-111, before 12/26/2019.

You may contact me at the number above if you have questions.

Very truly yours,

Michael Maier"