

KANSAS CORPORATION COMMISSION  
OIL & GAS CONSERVATION DIVISION

TEMPORARY ABANDONMENT WELL APPLICATION

All blanks must be complete

OPERATOR: License# \_\_\_\_\_  
Name: \_\_\_\_\_  
Address 1: \_\_\_\_\_  
Address 2: \_\_\_\_\_  
City: \_\_\_\_\_ State: \_\_\_\_\_ Zip: \_\_\_\_\_ + \_\_\_\_\_  
Contact Person: \_\_\_\_\_  
Phone:( \_\_\_\_\_ ) \_\_\_\_\_  
Contact Person Email: \_\_\_\_\_  
Field Contact Person: \_\_\_\_\_  
Field Contact Person Phone: ( \_\_\_\_\_ ) \_\_\_\_\_

API No. 15- \_\_\_\_\_  
Spot Description: \_\_\_\_\_  
\_\_\_\_ - \_\_\_\_ - \_\_\_\_ - \_\_\_\_ Sec. \_\_\_\_\_ Twp. \_\_\_\_\_ S. R. \_\_\_\_\_  E  W  
\_\_\_\_\_ feet from  N /  S Line of Section  
\_\_\_\_\_ feet from  E /  W Line of Section  
GPS Location: Lat: \_\_\_\_\_, Long: \_\_\_\_\_  
(e.g. xx.xxxxx) (e.g. -xxx.xxxxx)  
Datum:  NAD27  NAD83  WGS84  
County: \_\_\_\_\_ Elevation: \_\_\_\_\_  GL  KB  
Lease Name: \_\_\_\_\_ Well #: \_\_\_\_\_  
Well Type: (check one)  Oil  Gas  OG  WSW  Other: \_\_\_\_\_  
 SWD Permit #: \_\_\_\_\_  ENHR Permit #: \_\_\_\_\_  
 Gas Storage Permit #: \_\_\_\_\_  
Spud Date: \_\_\_\_\_ Date Shut-In: \_\_\_\_\_

	Conductor	Surface	Production	Intermediate	Liner	Tubing
Size						
Setting Depth						
Amount of Cement						
Top of Cement						
Bottom of Cement						

Casing Fluid Level from Surface: \_\_\_\_\_ How Determined? \_\_\_\_\_ Date: \_\_\_\_\_  
Casing Squeeze(s): \_\_\_\_\_ to \_\_\_\_\_ w / \_\_\_\_\_ sacks of cement, \_\_\_\_\_ to \_\_\_\_\_ w / \_\_\_\_\_ sacks of cement. Date: \_\_\_\_\_  
(top) (bottom) (top) (bottom)  
Do you have a valid Oil & Gas Lease?  Yes  No  
Depth and Type:  Junk in Hole at \_\_\_\_\_ (depth)  Tools in Hole at \_\_\_\_\_ (depth) Casing Leaks:  Yes  No Depth of casing leak(s): \_\_\_\_\_  
Type Completion:  ALT. I  ALT. II Depth of:  DV Tool: \_\_\_\_\_ w / \_\_\_\_\_ sacks of cement  Port Collar: \_\_\_\_\_ w / \_\_\_\_\_ sack of cement  
(depth) (depth)  
Packer Type: \_\_\_\_\_ Size: \_\_\_\_\_ Inch Set at: \_\_\_\_\_ Feet  
Total Depth: \_\_\_\_\_ Plug Back Depth: \_\_\_\_\_ Plug Back Method: \_\_\_\_\_

**Geological Data:**

Formation Name	Formation Top	Formation Base	Completion Information
1. _____	At: _____	to _____ Feet	Perforation Interval _____ to _____ Feet or Open Hole Interval _____ to _____ Feet
2. _____	At: _____	to _____ Feet	Perforation Interval _____ to _____ Feet or Open Hole Interval _____ to _____ Feet

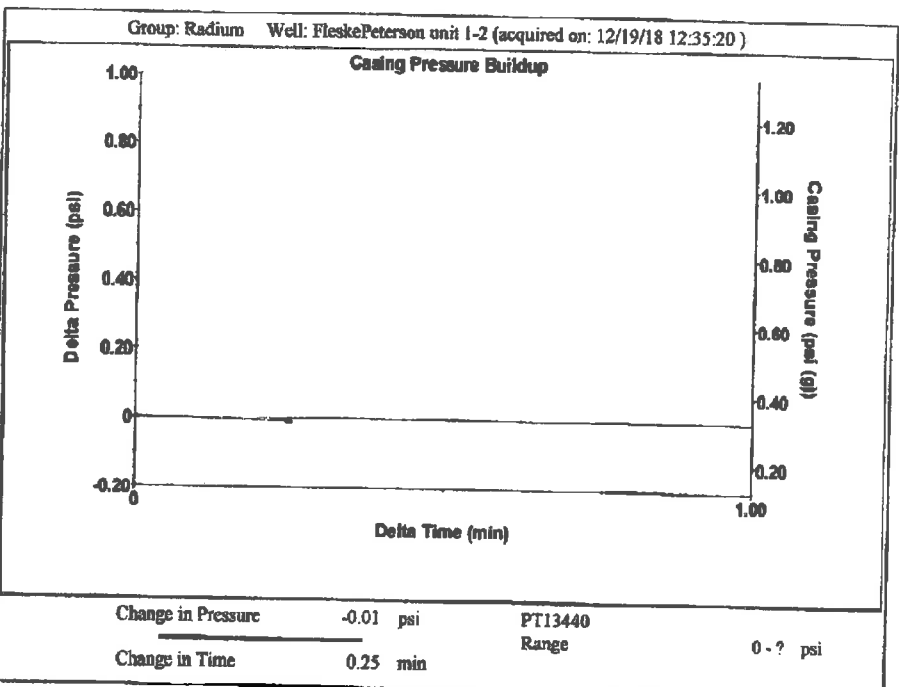
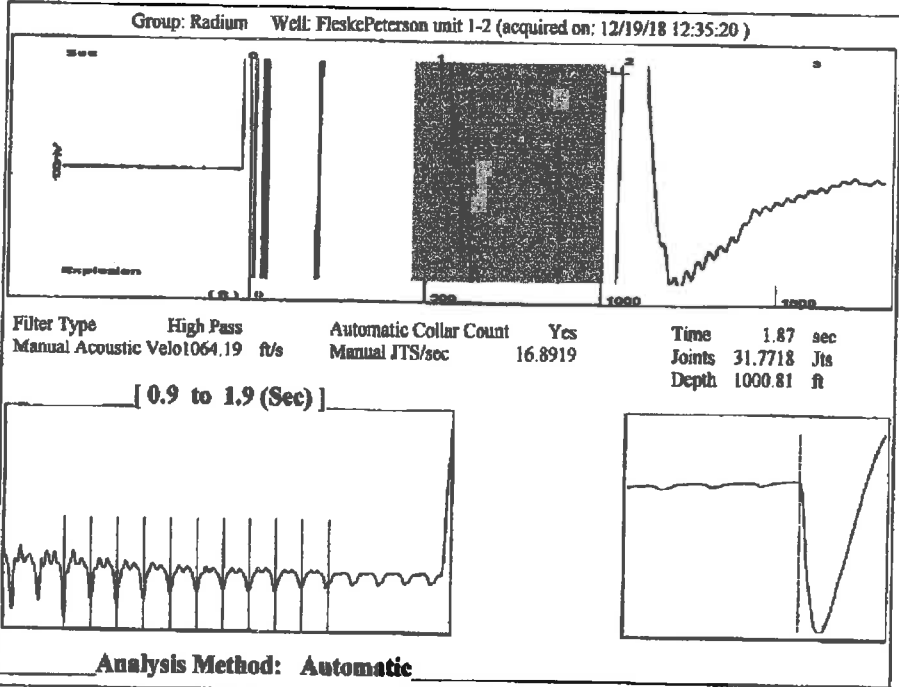
UNDER PENALTY OF PERJURY I HEREBY ATTEST THAT THE INFORMATION CONTAINED HEREIN IS TRUE AND CORRECT TO THE BEST OF MY KNOWLEDGE

Submitted Electronically

<b>Do NOT Write in This Space - KCC USE ONLY</b>	Date Tested: _____	Results: _____	Date Plugged: _____	Date Repaired: _____	Date Put Back in Service: _____
	Review Completed by: _____ Comments: _____				
TA Approved: <input type="checkbox"/> Yes <input type="checkbox"/> Denied Date: _____					

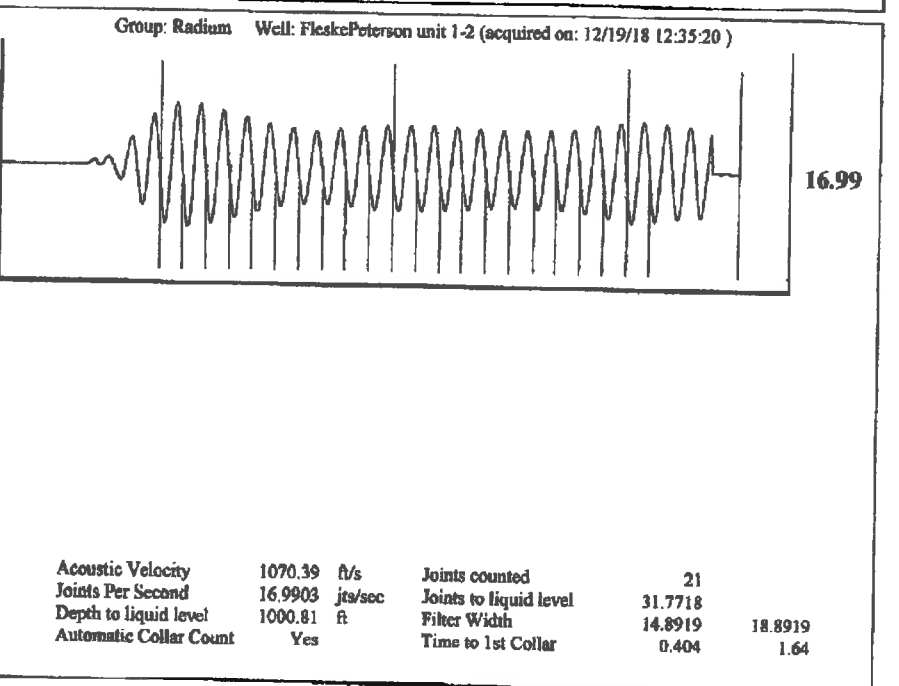
Mail to the Appropriate KCC Conservation Office:

	KCC District Office #1 - 210 E. Frontview, Suite A, Dodge City, KS 67801	Phone 620.682.7933
	KCC District Office #2 - 3450 N. Rock Road, Building 600, Suite 601, Wichita, KS 67226	Phone 316.337.7400
	KCC District Office #3 - 137 E. 21st St., Chanute, KS 66720	Phone 620.902.6450
	KCC District Office #4 - 2301 E. 13th Street, Hays, KS 67601-2651	Phone 785.261.6250



Group: Radium Well: FleskePeterson unit 1-2 (acquired on: 12/19/18 12:35:20)

<b>Production</b>	<b>Potential</b>	<b>Casing Pressure</b>	<b>Producing</b>
Oil -*- BBL/D	-*- BBL/D	0.3 psi (g)	Annular Gas Flow
Water -*- BBL/D	-*- BBL/D	Casing Pressure Buildup	0 Mscf/D
Gas -*- Mscf/D	-*- Mscf/D	-0.0 psi	% Liquid
		0.25 min	100 %
<b>IPR Method</b>	<b>Vogel</b>	<b>Gas/Liquid Interface Pressure</b>	
PBHP/SBHP	-*-	0.8 psi (g)	
Production Efficiency	0.0		
<b>Oil</b> 40 deg API		<b>Liquid Level Depth</b>	
<b>Water</b> 1.05 Sp.Gr.H2O		1000.81 ft	
<b>Gas</b> 0.90 Sp.Gr.AIR		<b>Pump Intake Depth</b>	
		3780.00 ft	
<b>Acoustic Velocity</b> 1070.39 ft/s		<b>Formation Depth</b>	
		3737.00 ft	
		<b>Pump Intake</b>	
		918.1 psi (g)	
<b>Formation Submergence</b>		<b>Producing BHP</b>	
Total Gaseous Liquid Column HT (TVD)	2779 ft	904.8 psi (g)	
Equivalent Gas Free Liquid HT (TVD)	2779 ft	<b>Static BHP</b>	
		-*- psi (g)	
<b>Acoustic Test</b>			



# STATE OF KANSAS

CORPORATION COMMISSION  
CONSERVATION DIVISION  
DISTRICT No. 1  
210 E. FRONTVIEW, SUITE A  
DODGE CITY, KS 67801



PHONE: 620-682-7933  
<http://kcc.ks.gov/>

GOVERNOR JEFF COLYER, M.D.

SHARI FEIST ALBRECHT, CHAIR | JAY SCOTT EMLER, COMMISSIONER | DWIGHT D. KEEN, COMMISSIONER

December 26, 2018

Loveness Mpanje  
F. G. Holl Company L.L.C.  
9431 E CENTRAL STE 100  
WICHITA, KS 67206-2563

Re: Temporary Abandonment  
API 15-145-21624-00-00  
FLESKE/PETERSON UNIT 1-2  
SW/4 Sec.02-20S-16W  
Pawnee County, Kansas

Dear Loveness Mpanje:

"Your temporary abandonment (TA) application for the well listed above has been approved. In accordance with K.A.R. 82-3-111 the TA status of this well will expire 12/26/2019.

- \* If you return this well to service or plug it, please notify the District Office.
- \* If you sell this well you are required to file a Transfer of Operator form, T-1.
- \* If the well will remain temporarily abandoned, you must submit a new TA application, CP-111, before 12/26/2019.

You may contact me at the number above if you have questions.

Very truly yours,

Michael Maier"