

Date:
 Preparer: Schraeder
 Lease: 6173

MV

Wellname: **PEAVEY A 5**
 Field: Bemis Shutts
 County: Ellis State: KS
 aka: 30' W of N/2-NW-SW
 API: 15-051-06469

Spot: 2310' FSL & 4650' FEL
 Sec: 13
 Twp: 11S
 Rge: 18W

KB: 1870'
 DF: 1868'
 GL:
 Diff: 2'

CASING INFORMATION

Size	Weight	Grade	CMT	Top	Btm	Date Run
15	70	LW	95	0	93'	4/7/41
10 3/4	29	SW	625	0	1109'	4/10/41
7	24	LW	250	1760'	3334'	4/22/41
5 1/2 liner	14	J55	185	3266'	3426'	8/18/56

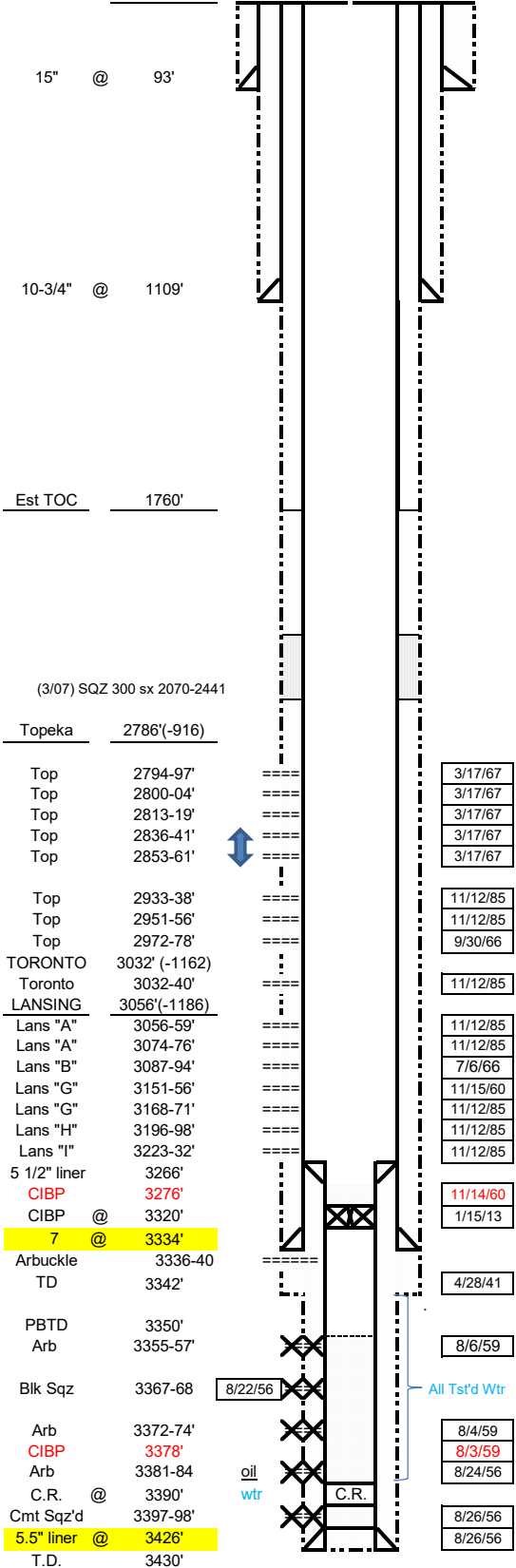
DSTs - NONE

PRODUCTION INTERVALS

Formation	Top	Btm	SPERF	# of holes	Date Shot	Status
Topeka	2794	2797	4	12	3/17/67	open
Topeka	2800	2804	4	16	3/17/67	open
Topeka	2813	2819	4	24	3/17/67	open
Topeka	2836	2841	4	20	3/17/67	open
Topeka	2853	2861	4	32	3/17/67	open
Topeka	2933	2938	4	20	11/12/85	open
Topeka	2951	2956	4	20	11/12/85	open
Topeka	2972	2978	4	24	9/30/66	open
Toronto	3032	3040	4	32	11/12/85	open
LKC	3056	3059	4	12	11/12/85	open
LKC	3074	3076	4	8	11/12/85	open
LKC B	3087	3094	2	14	7/6/66	open
LKC G	3151	3156	4	20	11/15/60	open
LKC	3168	3171	4	12	11/12/85	open
LKC	3196	3198	4	8	11/12/85	open
LKC	3223	3232	4	36	11/12/85	open
Arbuckle	3336	3340	4	16	2/7/02	Beneath CIBP
Arbuckle	3334	3342	open	hole	4/24/41	Cmt Sqz'd
Arbuckle	3355	3357	4	8	8/6/56	Cmt Sqz'd
Arbuckle	3367	3368	4	4	8/22/56	Cmt Sqz'd
Arbuckle	3372	3374	4	8	8/4/56	Cmt Sqz'd
Arbuckle	3381	3384	4	12	11/3/06	Cmt Sqz'd
Arbuckle	3397	3398	4	4	8/22/56	Cmt Sqz'd

WELL HISTORY

4/22/41	CO ARB OH 3334-3336. 100' OIH in 15 min. DD to 3340. 2960' OIH in 2.5 hrs. DD to 3342. ACD 500. Drawdown potential 155,844.
8/26/56	DD ARB 3346' to 3380' (added new oil). Drig to 3389' (white & tight). Cmt Sqz Arb O.H. 4 times (wtr zone @ 3385-89'). Water 3340-49' Swb 3372-89 30 bph - 13% oil. DD Arb O.H. to 3429'. Reamed hole to 6". Run 5 1/2" liner 3425.5' to 3267'. Cmt bottom 20sx. Top leaked - Sqz w/165 Sx. Pf Arb 3397-98'. Swb 0.6 BPH - 4% oil. Set Cmt Ret. at 3390' & Sqz 30 Sx. Pf Arb 3367-68'. Sqz w/35 sx. (No swabbing - block sqz?). DO Arb to 3390'. Pf Arb 3381-84'. Swb 4.8 bph - 26% oil.
8/30/56	16 x 137 from 3381-84'. BWO: 6 x 290 from 3334-42' (openhole).
1/30/59	Well is TA by 1/30/59.
8/3/59	Cmt Sqz 3381-84' w/ 50 Sx.
8/4/59	PERF ARB 3372-74'. Bail 3 bwph, trc oil.
8/5/59	Acd Arb 500-15% NE (1/4 bpm & 600# max). Swb 7 bwph.
8/6/59	PERF ARB 3355-57'. Tst: 3 bph-scum oil.
8/7/59	Acd Arb w/250 gal. 15% NE (1/3 BPM & 600# max). Swb 48 BWPH.
8/9/59	Arb W/O failed. Laid out well equipment. TA'd well. BWO: TA (and) AWO: TA
11/19/60	Set CIBP at 3276' & cap 2 Sx cmt; PBDT 3262'. PERF Lans "G" 3151-56'. Dry.
	ACD "G" 250-NE & 1500-X-100 (3 bpm & 25#). Swb 21 bph - 87% oil.
11/28/60	158 x 28 BWO: S.I.
8/10/61	85 x 60. 11,500 cum oil (this per note in A 3 well file)
9/13/61	128 x 32
7/7/66	PERF Lans "B" 3087-94'. Dry. ACD "B" 250-XF 33 & 1,000-X-100 (3 bpm & 125#). Swb 4 boph for 2.5 hrs.
7/15/66	27 x 21 from B & G BWO: 15 x 13 from G
9/19/66	14 x 14
9/30/66	PERF Topeka 2972-74'. ACD 250 gals XFW & 750-15% NE (0.4 bpm & 400#). Did not \$ tst. Commingle "B" & "G" & Topeka.
12/2/66	30 x 101
3/17/67	PERF Topeka 2853-61', 2836-41', 2813-19', 2800-04', & 2794-97' ACD 2853-61' 500-XFW & 1,500-15% NE (w/3 bbls out, communicated up). ACD 2813-19' 500-XFW & 1,500-15% FE (2.5 bpm & 150#). ACD 2800-04' & 2794-97' w/250-XFW & 750-15% NE (4 bpm & 300# max.).
3/28/67	49 x 62 from Top(all), B, G BWO: 66 x 40 from B, G, part Top
11/8/85	Repair leak at surface of 7" csg. PERF LKC "I" 3223-32', "H" 3196-98', "G" 3168-71', "A" 3074-76' & 3056-59', Tor 2933-38' ACD Lans "I", "H", "G", "B", "A", "A", Toronto, Top 2972-78', 2951-56', & 2933-38' with total 3600-15% NE using SAP tool (6" spacing). 1/2 bpm & 900#-1200#).



oil wtr
 C.R.
 All Tst'd Wtr

