

Geologic Report
Aaron L. Young

Drilling Time and Sample Log

Scale 1:240 (5"=100') Imperial
Measured Depth Log

Well Name: Clark Fraley #1-5
API: 15-151-22475
Location: Section 5 - T26S - R11W
License Number: 3180
Spud Date: 10 / 20 / 2018
Surface Coordinates: 1390' FSL and 330' FEL
Approx. N2 - NE - SE - SE
Region: Pratt Co., KS
Drilling Completed: 10 / 27 / 2018
Bottom Hole Coordinates:
Ground Elevation (ft): 1845' K.B. Elevation (ft): 1852'
Logged Interval (ft): 3300' To: 4204' Total Depth (ft): 4204'
Formation: Kinderhook
Type of Drilling Fluid: Mud-Co

Printed by MudLog from WellSight Systems 1-800-447-1534 www.WellSight.com

OPERATOR

Company: Deutsch Oil Company
Address: 8100 E 22nd St N, Bldg 600
Wichita, KS 67226

GEOLOGIST

Name: Aaron L. Young, M. S.
Company: Young Consulting LLC
Address: 100 S Main Ste 505
Wichita, KS 67202

General Info

CONTRACTOR: Pickrell Drilling, Rig #10

BIT RECORD:

No.	Size	Make	Jets	Out	Feet	Hours
1	12-1/4	RR	15-15-15	310'	303'	3.25
2	7-7/8	JZ HA1PG	14-14-14	1677'	1374'	15.50
3	7-7/8	JZ HA20	14-14-14	4204'	2527'	86.75

Surveys: 310'-.75, 797'-.5, 1333'-1.5, 1677'-1.5, 2030'-.75, 2596'-.25, 4204'-.25

GENERAL DRILLING AND PUMP INFORMATION:

Drilling with 38,000 -40,000 lbs. on bit and approx 70-80 RPM.

Running 9 stands of collars; 536.15'

Pumping approx 850 psi at standpipe; 60 strokes/min

Daily Status

10/20/18- Spud @ 8:00pm, ran 7 jts of new 8 5/8" 23# surface casing set @ 303', cemented w/ 325 sx. 60/40 pozmix, 2% gel & 3% CC. Plug down at 3:15am

10/21/18 - WOC

10/22/18 - Drilling, @ 850'

10/23/18 - Drilling, @ 1800'

10/24/18 - Drilling, @ 2552'

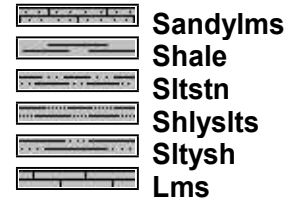
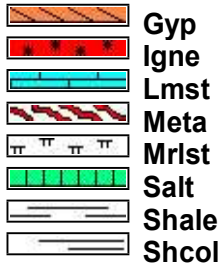
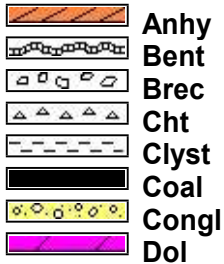
10/25/18 - Drilling, @ 3166'

10/26/18 - Drilling, @ 3727'

10/27/18 - Drilling, @ 4105', TD'd @ 4204 at 2:30pm

10/28/18 - Ran 106 jts of 5-1/2", 17#, range 3 production casing. Set @ 4195'. Cemented w/ 175 sx AA-2, 2% defoamer, 10% salt, 5% C-17, 5#/sx gilsonite. Plug down at 6:25pm. Cement 35 sx 60/40 poz to plug rat and mouse holes.

ROCK TYPES

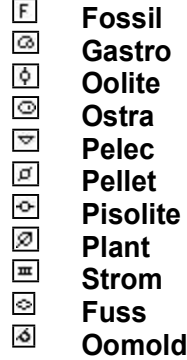
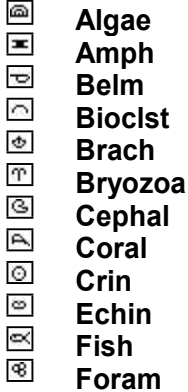


ACCESSORIES

MINERAL



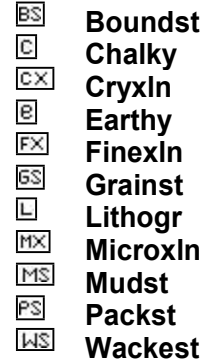
FOSSIL



STRINGER



TEXTURE



OTHER SYMBOLS

POROSITY TYPE

- E Earthy
- F Fenest
- X Fracture
- I Inter
- M Moldic
- O Organic
- P Pinpoint
- V Vuggy

SORTING

- W Well
- M Moderate
- P Poor

ROUNDING

- R Rounded
- F Subrnd
- a Subang
- A Angular

OIL SHOWS

- Even
- ◉ Spotted
- ◌ Ques
- ◻ Dead
- ⊠ Gas show

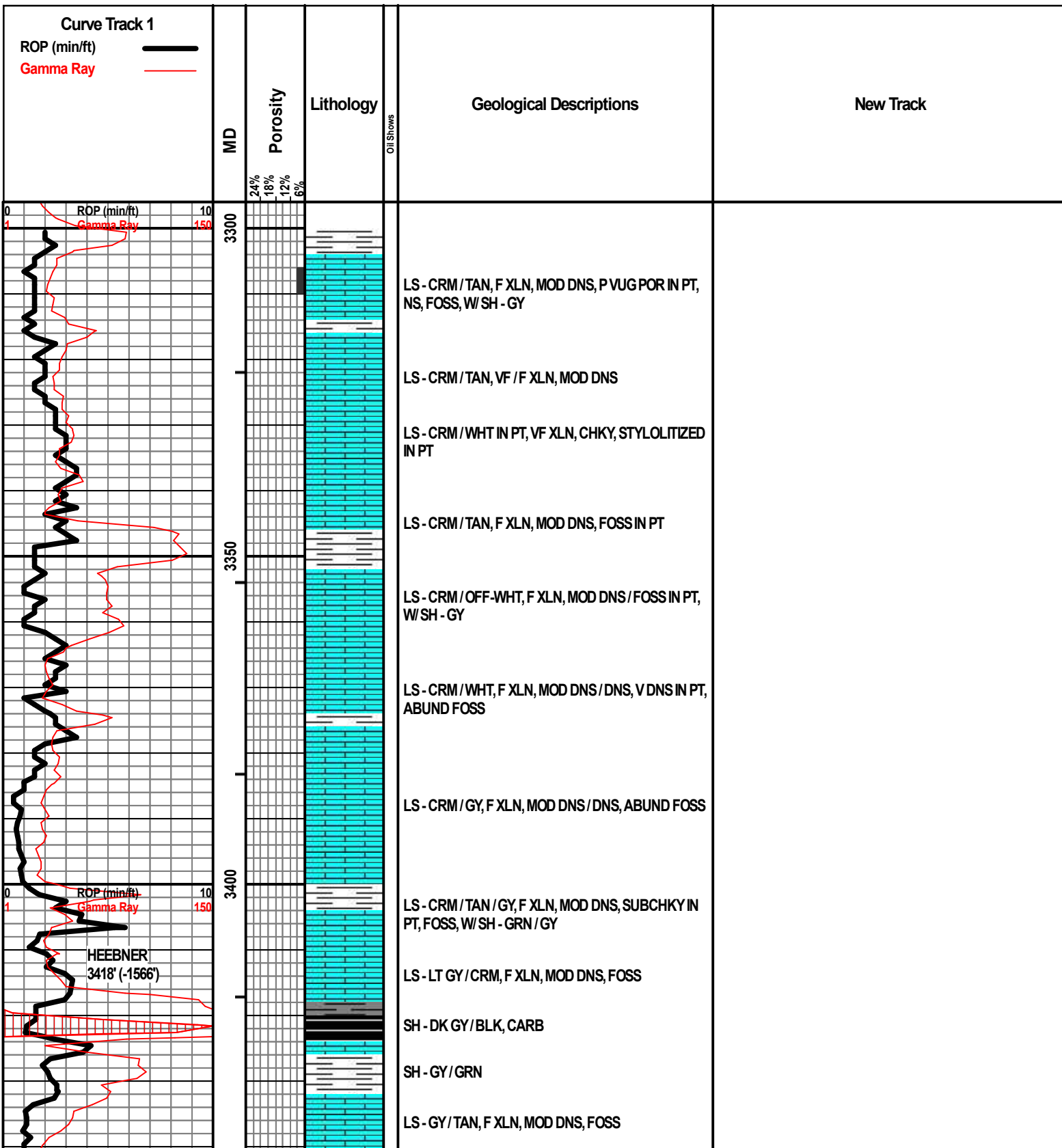
INTERVALS

- Core
- ◻ Dst

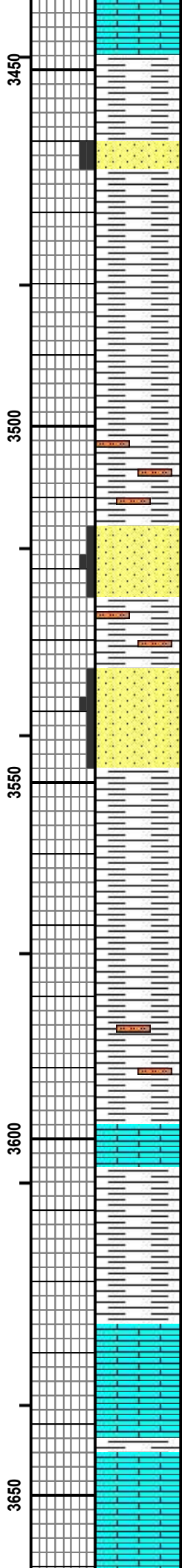
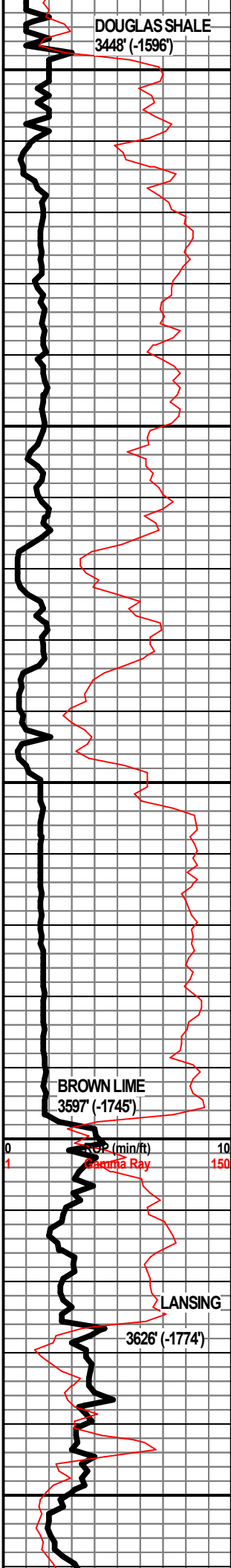
- Dst

EVENTS

- ▽ Rft
- ▾ Sidewall
- ▬ Conn



HEEBNER
3418' (-1566')



LS - GY / TAN, F XLN, MOD DNS, P INTXLN POR IN PT, NS, FOSS, STYLOLITIZED IN PT

SH - GY

SS - GY / CLR, VF GR, SUB-RND, MOD SRTD, W CEM, FRI IN PT, DNS IN PT, P / F INTGR POR, NS, NO ODOR, GLAUC, SHLY IN PT

SH - GY, SOFT

SH - LT GY / GY

SS - GY / CLR, VF GR, SUB-RND, MOD CEM, W SRTD, P INTGR POR, NS, W / SH - LT GY, SLTY

SH - LT GY, SLTY

SS - VF / F GR, SUB-ANG / SUB-RND, MOD CEM, MOD SRTD, P / F INTGR POR, NS

SH - LT GY / GY

SH - LT GY / GY

SH - LT GY / GY, SLTY IN PT

LS - BRN / TAN / CRM, F XLN, DNS, FOSS

SH - LT GY / GY

SH - LT GY / GY

LS - CRM / TAN, VF / F XLN, SUBCHKY / MOD DNS, FOSS

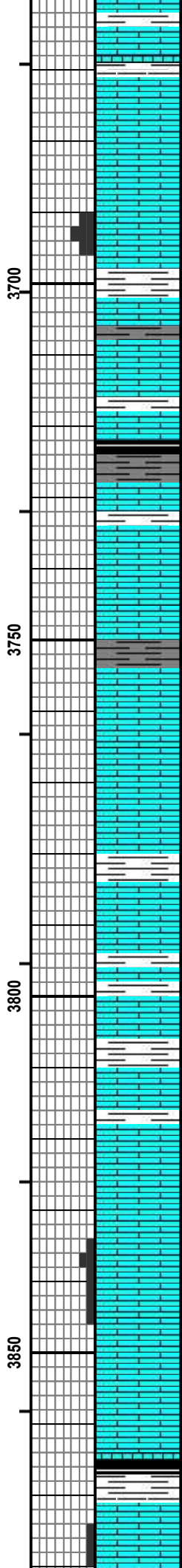
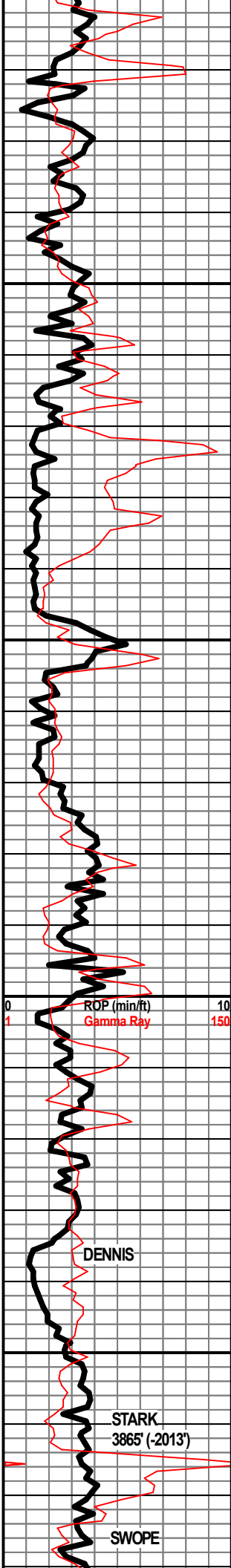
LS - BRN / GY, F XLN, MOD DNS / DNS, FOSS, W / SH - RD / GRN / GY

LS - CRM / TAN, F XLN, MOD DNS, ABUND FOSS

LS - CRM / TAN / GY, F XLN, MOD DNS / DNS, FOSS

WT 8.8
 VIS 45
 LCM 1.5#

WT 8.8
 VIS 53
 LCM 1#



LS - CRM / TAN, VF / F XLN, MOD DNS, SUBCKY IN PT, W/SH - GY

LS - CRM, VF XLN, SUBCHKY / CHKY, FOSS IN PT

LS - TAN, F XLN, P / F INTXLN POR, FSFO, F ODOR UPON BREAK, OIL SHEEN, LT / DK BRN OIL DROPLETS, DULL FLUOR

SH - GRN / GY, W/LS - CRM, VF / F XLN, SUBCHKY

SH - DK GY, W/LS - CRM, VF XLN, SUBCHKY / MOD DNS

LS - TAN / GY / DK BRN IN PT, F XLN, DNS, ABUND FOSS

SH - DK GY / BLK, SLI CARB

LS - CRM / TAN, VF / F XLN, SUBCHKY / MOD DNS, DNS IN PT, FOSS IN PT, W/SH - RD / GRN / GY

LS - CRM / TAN, BRN / GY IN PT, F XLN, MOD DNS / DNS, ABUND FOSS

SH - DK GY, W/LS - CRM / TAN / GY, VF / F XLN, SUBCHKY

LS - TAN / BRN / GY, F XLN, DNS, CHTY IN PT, W/WHT FRSH CHT

SH - GRN / GY, W/LS - CRM / TAN / BRN, F XLN, MOD DNS / DNS, FOSS

LS - CRM / TAN, VF / F XLN, MOD DNS / SUBCHKY, FOSS

LS - CRM, VF / F XLN, MOD DNS, SLI SUBCHKY, W/SH - RD / GRN

SH - RD / GRN / GY, W/LS - CRM / WHT, VF XLN, SUBCHKY / CHKY IN PT

LS - TAN, F / M LXN, MOD DNS / DNS, FOSS IN PT

LS - CRM / TAN, F XLN, MOD DNS, FOSS, OOLITIC IN PT

LS - CRM / TAN, F XLN, MOD DNS, OOLITIC IN PT ABUND OF FOSS, P INTEROOLITIC & INTERXLN POR IN PT, NS, NO ODOR, NO FLUOR

SH - BLK, CARB, SHO OF GAS, W/LS - CRM, VF / F XLN, SUBCHKY / MOD DNS

SH - GY

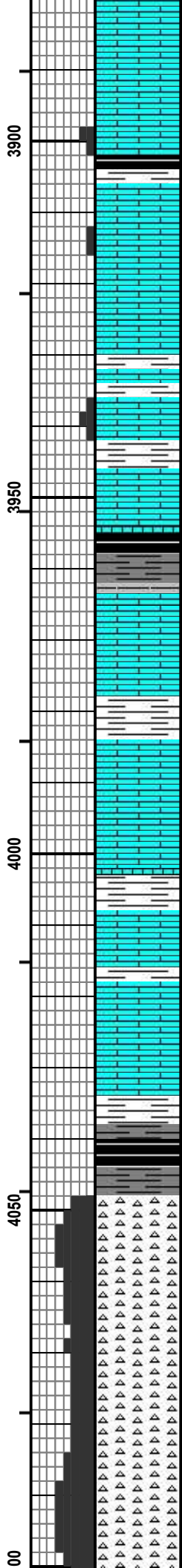
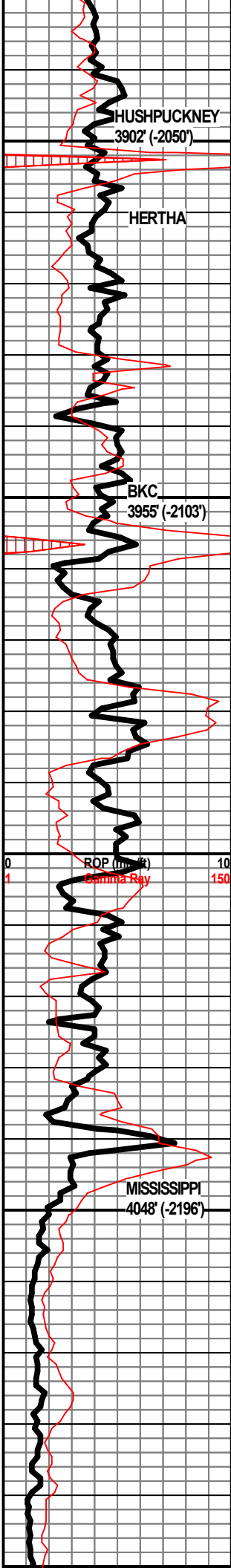
LS - CRM / TAN, F XLN, MOD DNS / DNS, P INTERXLN & VUG POR IN PT, NS, NO ODOR, ABUND FOSS

WT 8.8
VIS 51
LCM 2#

WT 9.1
VIS 47
LCM 2#

WT 9.2
VIS 48
LCM 2#

WT 9.2
VIS 50
LCM 2#



LS - CRM / TAN, F XLN, DNS / V DNS, FOSS IN PT,

LS - CRM / TAN, VF / F XLN, P / F INTERXLN POR, SSFO, ABUND OIL SHEEN, SHO OF GAS, DULL FLUOR

SH - BLK, CARB

LS - GY / TAN, F XLN, P INTERXLN POR IN PT, VSSFO, OIL SHEEN UPON BREAK, SLI ODOR, DULL FLUOR

LS - CRM, VF / F XLN, PRED MOD DNS, SUBCHKY IN PT, FOSS

LS - TAN / GY, F / M XLN, MOD DNS / DNS, FOSS, W / SH - RD-ORNG / MAR / GRN / GY

LS - TAN / GY, F XLN, MOD DNS / DNS, FOSS, W / SH - RD / GRN / GY

LS - WHT / CRM, VF XLN, P INTERXLN POR IN PT, SUBCHKY, VSSFO, OIL SHEEN UPON BREAK, SLI ODOR BRI YEL-GRN FLUOR

SH - DK GY / BLK, CARB IN PT

LS - CRM / TAN / GY IN PT, F XLN, MOD DNS / DNS, FOSS

SH - RD / GRN / GY, W / LS - CRM / TAN, F XLN, DNS, FOSS, CHTY IN PT W / WHT FRSH CHT

LS - CRM / TAN, VF / F XLN, MOD DNS / SUBCHKY, FOSS IN PT

SH - RD / GRN / GY, W / LS - CRM / WHT, VF / F XLN, SUBCHKY / CHKY, FOSS IN PT

LS - CRM / TAN, F XLN, MOD DNS / DNS, FOSS

LS - TAN / GY, F XLN, MOD DNS / DNS, FOSS

SH - GY / GRN / RD / RD-ORNG

SH - GY / BLK, CARB IN PT

CHT - WHT / GY, OPAQ, SLI TRANSLUCNT, PRED WEATH, F / G WEATH POR IN PT, FSFO, SHO OF GAS, DULL FLUOR

CHT - WHT / GR, PRED OPAQ, PRED WEATH, F / G WEATH POR, FSFO, SHO OF GAS, ABUND OIL SHEEN, F ODOR, MOD YEL-GRN FLUOR

CHT - WHT / GY, OPAQ, TRANSLUCNT IN PT, PRED WEATH, FRSH IN PT, F WEATH POR, FSFO, G SHO GAS, BRI YEL-GRN FLUOR

CHT - WHT / GY / BRN IN PT, OPAQ, PRED WEATH, F / G WEATH POR, FSFO, SHO OF GAS, ABUND OIL SHEEN, F ODOR, BRI YEL-GRN FLUOR

WT 9.2
VIS 59
LCM 1.5#

WT 9.0
VIS 48
LCM 2#

