



**Fall & Associates**  
 Stake and Elevation Service  
 P.O. Box 222  
 Pretty Prairie, KS. 67570  
 785-243-7506

Date 11-27-18

Invoice Number 1124181

MURFIN DRILLING

1-22

Antholz 'B'

Operator

Number

Farm Name

Cheyenne-KS

22

2s

37w

2310'FNL 2310'FEL

County-State

S

T

R

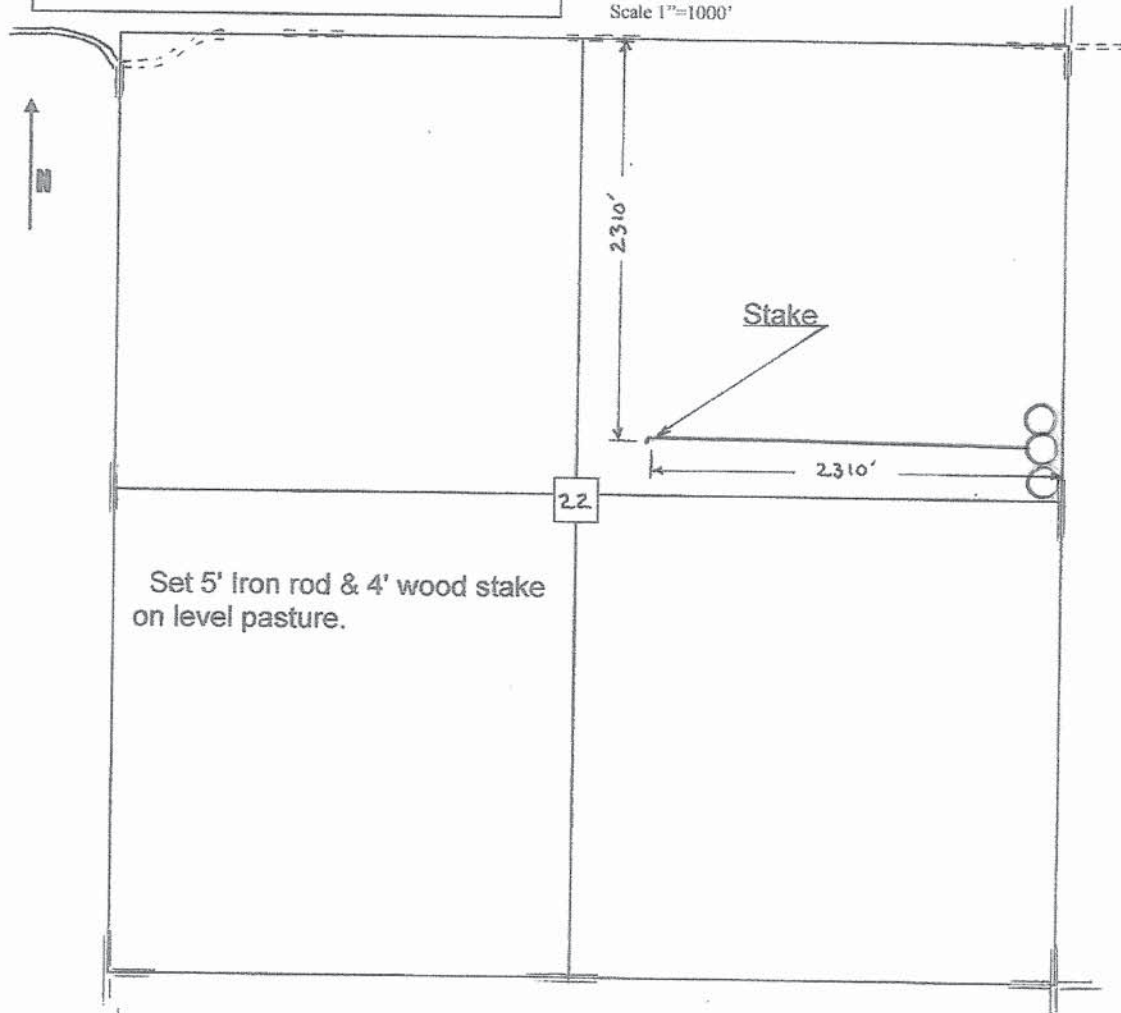
Location

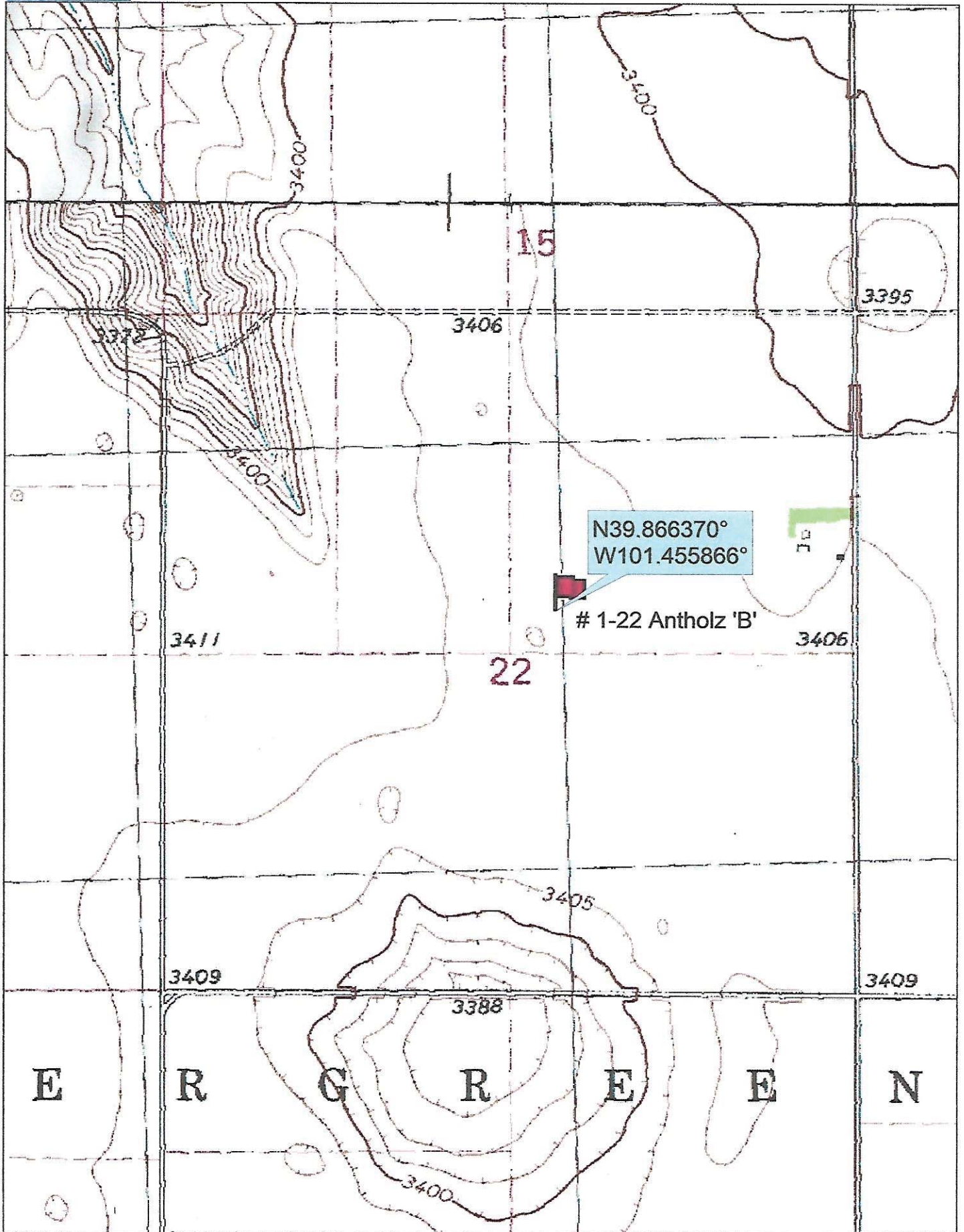
Murfin Drilling  
 250 N. Water  
 Suite 300  
 Wichita, KS. 7202

Elevation 3410 Gr.

Ordered By: Shauna

Scale 1"=1000'





Data use subject to license.

© DeLorme. Topo North America™ 9.

www.delorme.com

