

Sean Deenihan

Petroleum Geologist

GEOLOGIST'S REPORT

DRILLING TIME AND SAMPLE LOG

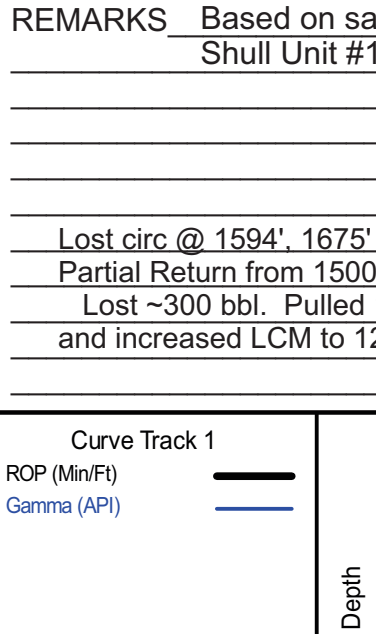
COMPANY Red Oak Energy, Inc.
 LEASE Shull Unit #1-5
 FIELD Wildcat
 LOCATION 1765' NSL & 2483' FEL
 SEC 5 TWP 7 S RGE 33 W
 COUNTY Thomas STATE Kansas
 CONTRACTOR Murtin Drilling #8
 SPUD 9/4/18 COMP 9/10/18
 RTD 4750' LTD 4751'
 MUD UP TYPE MUD Chemical
 SAMPLES SAVED FROM 3800' TO RTD
 DRILLING TIME KEPT FROM 3800' TO RTD
 SAMPLES EXAMINED FROM 3800' TO RTD
 GEOLOGICAL SUPERVISION FROM 3750'
 REFERENCE WELL CND/DIL

Formation	Sample Tops	E-log Tops	Struct Pos.
B/Anhyvrite		2783 (-454)	
Heebner Sh.		4050 (-913)	
Lansing		4096 (-959)	
Stark Sh.		4286 (-1149)	
Ft. Scott		4530 (-1393)	
Cherokee Sh.		4533 (-1416)	
Mississippi		4704 (-1567)	

ELEVATIONS
 KB 3137'
 DF _____
 GI 3132'
 Measurements Are All From Kelly Bushing

CASING
 CONDUCTOR _____
 SURFACE 8'-8" at 262'
 PRODUCTION _____

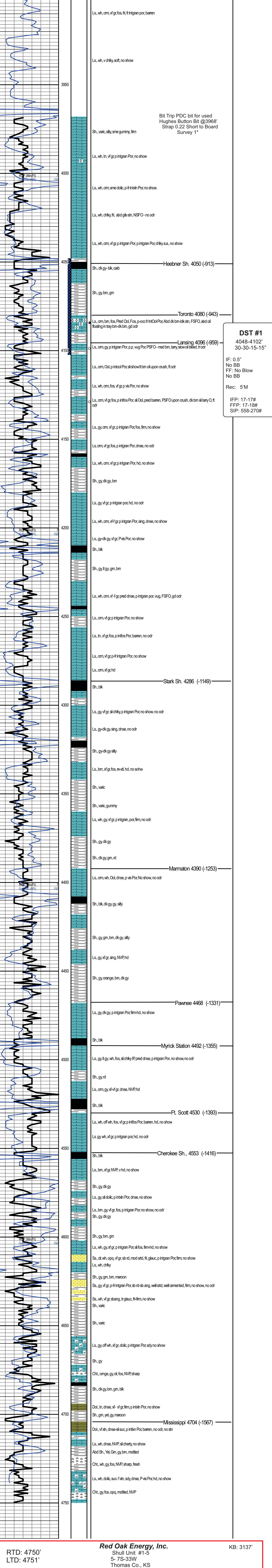
ELECTRICAL SURVEYS
 ELI _____
 CND/DIL _____



REMARKS Based on sample analysis, DST results, and relative structural position, the Shull Unit #1-5 was plugged and abandoned.

Respectfully Submitted,
 Sean P. Deenihan

Lost circ @ 1594', 1675' & 1790'
 Partial Return from 1500-2300'
 Lost ~300 bbl. Pulled 10 stds and increased LCM to 12#.



DST #1
 4048-4102'
 30-30-15-15"
 IF: 0.5"
 No BB
 FF: No Blow
 No BB
 Rec: 5'M
 IFF: 17-17#
 FFP: 17-18#
 SIP: 558-270#

RTD: 4750'
 LTD: 4751'

Red Oak Energy, Inc.
 Shull Unit #1-5
 5- 7S-33W
 Thomas Co., KS

KB: 3137'