



**TRILOBITE
TESTING, INC.**

DRILL STEM TEST REPORT

Triple Crown Operating LLC

28/20S/22W/Ness

2201 S Utica Pl
Suite 100
Tulsa OK 74114+7099
ATTN: Sean Deenihan

Darius 1-28

Job Ticket: 63455

DST#: 1

Test Start: 2018.09.02 @ 03:51:00

GENERAL INFORMATION:

Formation: **Mississippi**

Deviated: No Whipstock: ft (KB)

Time Tool Opened: 06:24:17

Time Test Ended: 11:29:02

Test Type: Conventional Bottom Hole (Initial)

Tester: Ken Swinney

Unit No: 72 Hays 134

Interval: 4306.00 ft (KB) To 4373.00 ft (KB) (TVD)

Reference Elevations: 2193.00 ft (KB)

Total Depth: 4373.00 ft (KB) (TVD)

2183.00 ft (CF)

Hole Diameter: 7.80 inches Hole Condition: Fair

KB to GR/CF: 10.00 ft

Serial #: 8322

Inside

Press@RunDepth: 360.37 psig @ 4307.00 ft (KB)

Capacity: psig

Start Date: 2018.09.02

End Date:

2018.09.02

Last Calib.:

2018.09.02

Start Time: 03:51:01

End Time:

11:29:02

Time On Btm:

2018.09.02 @ 06:22:17

Time Off Btm:

2018.09.02 @ 08:25:02

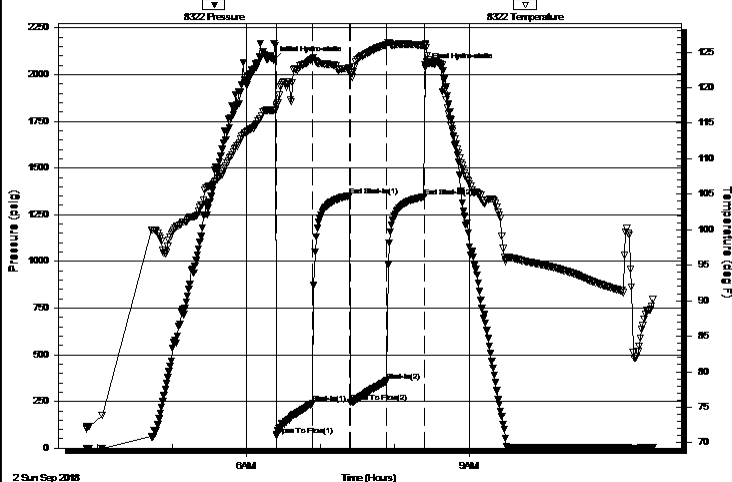
TEST COMMENT: I.F. 30 Minutes/ Blow built to BOB in 7 minutes/ Total build to 39 1/2 inches

I.S.I. 30 Mintues/ No blow back

F.F. 30 Minutes/ Blow built to BOB in 10 minutes/ Total build to 35 inches

F.S.I. 30 Mintues/ No blow back

Pressure vs. Time



PRESSURE SUMMARY

Time (Min.)	Pressure (psig)	Temp (deg F)	Annotation
0	2077.77	116.77	Initial Hydro-static
2	66.67	117.36	Open To Flow (1)
32	241.87	124.05	Shut-In(1)
62	1351.07	122.73	End Shut-In(1)
62	246.69	122.06	Open To Flow (2)
92	360.37	126.10	Shut-In(2)
122	1345.99	125.98	End Shut-In(2)
123	2036.73	126.14	Final Hydro-static

Recovery

Length (ft)	Description	Volume (bbl)
126.00	Oil cut Muddy Water	0.67
0.00	Oil 10% Mud 15% Water 75%	0.00
186.00	Mud cut Watery Oil	2.61
0.00	Mud 5% Water 45% Oil 50%	0.00
248.00	Oily Mud	3.48
0.00	Oil 40% Mud 60%	0.00

Gas Rates

Choke (inches)	Pressure (psig)	Gas Rate (Mcf/d)



TRILOBITE TESTING, INC.

DRILL STEM TEST REPORT

Triple Crown Operating LLC

28/20S/22W/Ness

2201 S Utica Pl
Suite 100
Tulsa OK 74114+7099
ATTN: Sean Deenihan

Darius 1-28

Job Ticket: 63455

DST#: 1

Test Start: 2018.09.02 @ 03:51:00

GENERAL INFORMATION:

Formation: **Mississippi**

Deviated: No Whipstock: ft (KB)

Time Tool Opened: 06:24:17

Time Test Ended: 11:29:02

Test Type: Conventional Bottom Hole (Initial)

Tester: Ken Swinney

Unit No: 72 Hays 134

Interval: 4306.00 ft (KB) To 4373.00 ft (KB) (TVD)

Reference Elevations: 2193.00 ft (KB)

Total Depth: 4373.00 ft (KB) (TVD)

2183.00 ft (CF)

Hole Diameter: 7.80 inches Hole Condition: Fair

KB to GR/CF: 10.00 ft

Serial #: 6752 Outside

Press@RunDepth: 1347.46 psig @ 4308.00 ft (KB)

Capacity: psig

Start Date: 2018.09.02

End Date:

2018.09.02

Last Calib.:

2018.09.02

Start Time: 03:51:01

End Time:

11:28:02

Time On Btm:

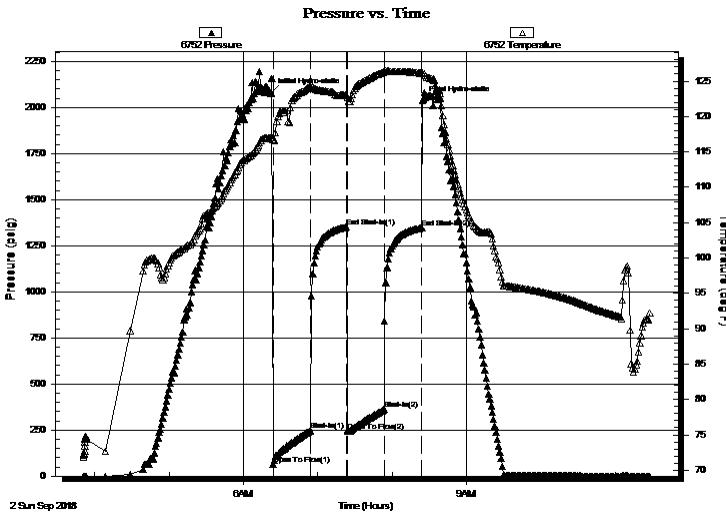
2018.09.02 @ 06:22:17

Time Off Btm:

2018.09.02 @ 08:24:47

TEST COMMENT: I.F. 30 Minutes/ Blow built to BOB in 7 minutes/ Total build to 39 1/2 inches
I.S.I. 30 Mintues/ No blow back
F.F. 30 Minutes/ Blow built to BOB in 10 minutes/ Total build to 35 inches
F.S.I. 30 Mintues/ No blow back

PRESSURE SUMMARY



Time (Min.)	Pressure (psig)	Temp (deg F)	Annotation
0	2078.82	116.98	Initial Hydro-static
2	65.86	116.76	Open To Flow (1)
32	246.93	124.27	Shut-In(1)
61	1351.86	123.01	End Shut-In(1)
62	245.53	122.67	Open To Flow (2)
92	361.76	126.33	Shut-In(2)
122	1347.46	126.16	End Shut-In(2)
123	2035.68	126.22	Final Hydro-static

Recovery

Length (ft)	Description	Volume (bbl)
126.00	Oil cut Muddy Water	0.67
0.00	Oil 10% Mud 15% Water 75%	0.00
186.00	Mud cut Watery Oil	2.61
0.00	Mud 5% Water 45% Oil 50%	0.00
248.00	Oily Mud	3.48
0.00	Oil 40% Mud 60%	0.00

Gas Rates

Choke (inches)	Pressure (psig)	Gas Rate (Mcf/d)



**TRILOBITE
TESTING, INC.**

DRILL STEM TEST REPORT

FLUID SUMMARY

Triple Crown Operating LLC

28/20S/22W/Ness

2201 S Utica Pl
Suite 100
Tulsa OK 74114+7099
ATTN: Sean Deenihan

Darius 1-28

Job Ticket: 63455

DST#: 1

Test Start: 2018.09.02 @ 03:51:00

Mud and Cushion Information

Mud Type: Gel Chem

Cushion Type:

Oil API:

deg API

Mud Weight: 9.00 lb/gal

Cushion Length:

ft

Water Salinity:

23000 ppm

Viscosity: 48.00 sec/qt

Cushion Volume:

bbbl

Water Loss: 8.79 in³

Gas Cushion Type:

Resistivity: ohm.m

Gas Cushion Pressure:

psig

Salinity: 3500.00 ppm

Filter Cake: 1.00 inches

Recovery Information

Recovery Table

Length ft	Description	Volume bbbl
126.00	Oil cut Muddy Water	0.674
0.00	Oil 10% Mud 15% Water 75%	0.000
186.00	Mud cut Watery Oil	2.609
0.00	Mud 5% Water 45% Oil 50%	0.000
248.00	Oily Mud	3.479
0.00	Oil 40% Mud 60%	0.000
248.00	Mud cut Watery Oil	3.479
0.00	Mud 20% Water 30% Oil 50%	0.000

Total Length: 808.00 ft Total Volume: 10.241 bbl

Num Fluid Samples: 0

Num Gas Bombs: 0

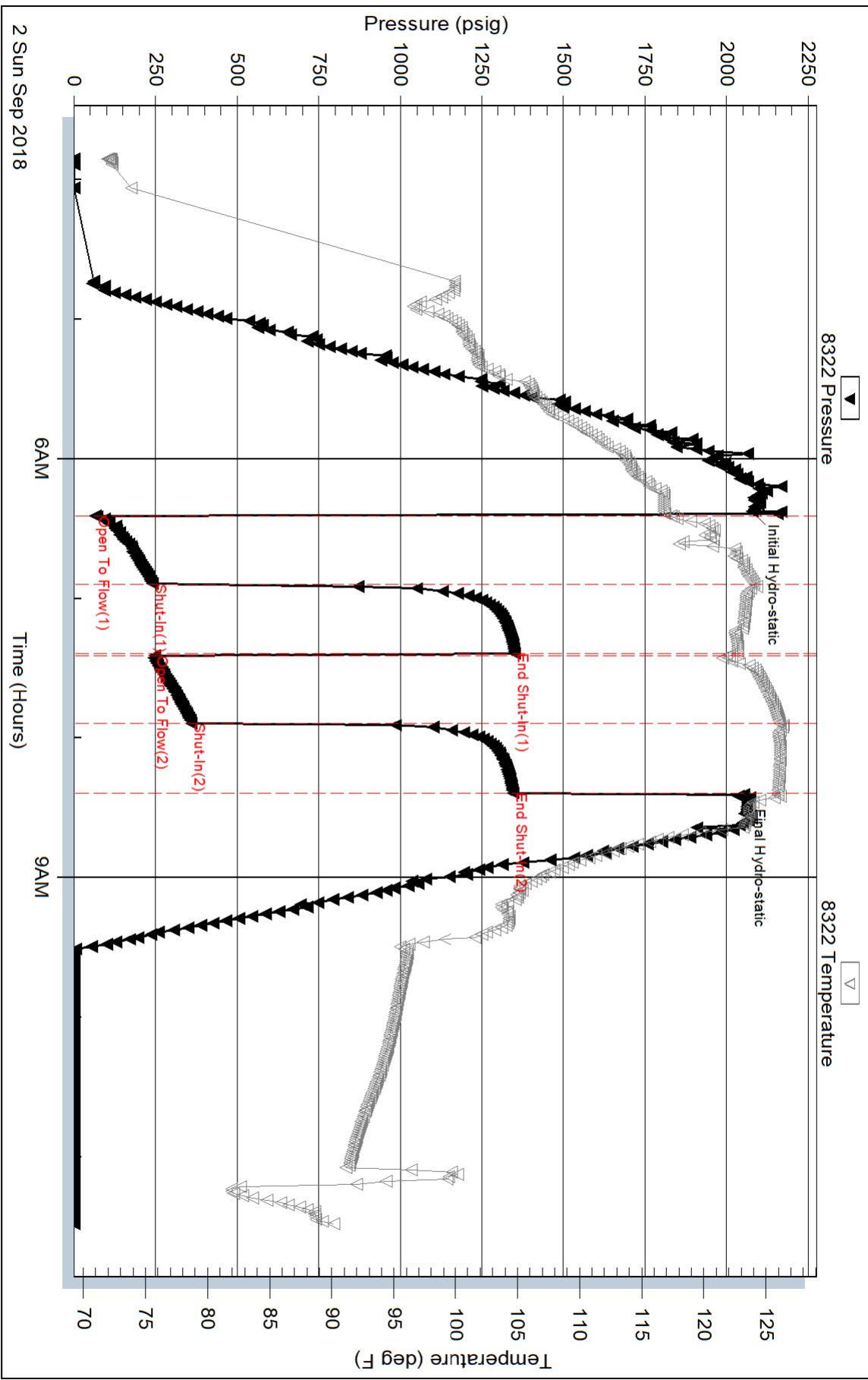
Serial #:

Laboratory Name:

Laboratory Location:

Recovery Comments: Recovery Resistivity .236 ohms @ 84 deg

Pressure vs. Time



Pressure vs. Time

