

# Sean Deenihan

## Petroleum Geologist

### GEOLOGIST'S REPORT

#### DRILLING TIME AND SAMPLE LOG

COMPANY Triple Crown Operating, LLC.  
LEASE Darius #1-28

FIELD Wildcat  
LOCATION 2100' FSL & 100' FWL  
SEC 28 TWP 20 S RGE 22 W  
COUNTY Ness STATE Kansas

CONTRACTOR WW Drilling Rig #14  
SPUD 4373' COMP LTD 4373'  
RTD 4373' TYPE MUD Chemical

MUD UP \_\_\_\_\_  
SAMPLES SAVED FROM 3700' TO RTD  
DRILLING TIME KEPT FROM 3700' TO RTD  
SAMPLES EXAMINED FROM 3700' TO RTD

GEOLOGICAL SUPERVISION FROM 3550'  
REFERENCE WELL CND/DLI, BHG

ELEVATIONS  
KB 2193'  
DF \_\_\_\_\_  
GL 2182'

Measurements Are All From Kelly Bushing  
CASING  
CONDUCTOR 8-5/8" at 1449'  
SURFACE \_\_\_\_\_  
PRODUCTION \_\_\_\_\_

ELECTRICAL SURVEYS  
ELI \_\_\_\_\_  
CND/DLI, BHG \_\_\_\_\_

Formation Sample Tops E-log Tops Struct Pos.

B/Anhydrite 1449 (+744)  
Heebner Sh. 3690 (-1497)  
Lansing 3740 (-1547)  
Stark Sh. 4000 (-1807)  
Fl Scott 4260 (-2067)  
Cherokee Sh. 4286 (-2093)  
Warsaw 4344 (-2151)  
Osage Porosity 4370 (-2177)

\_\_\_\_\_

\_\_\_\_\_

\_\_\_\_\_

\_\_\_\_\_

\_\_\_\_\_

\_\_\_\_\_

\_\_\_\_\_

\_\_\_\_\_

\_\_\_\_\_

\_\_\_\_\_

\_\_\_\_\_

\_\_\_\_\_

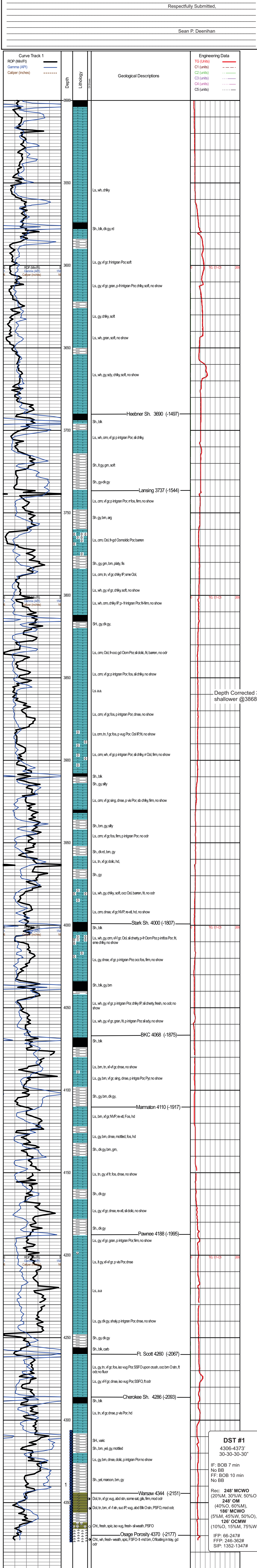
\_\_\_\_\_

\_\_\_\_\_

REMARKS Based on sample analysis, DST results, and relative structural position, the Darius #1-28 was plugged and abandoned.

Respectfully Submitted,

Sean P. Deenihan



RTD: 4373'  
LTD: 4373'

**Triple Crown Operating, LLC**  
Darius #1-28  
28- 20S-22W  
Thomas Co., KS

KB: 2193'