



**BASIC**<sup>SM</sup>  
ENERGY SERVICES  
PRESSURE PUMPING & WIRELINE

10244 NE Hwy. 61  
P.O. Box 8613  
Pratt, Kansas 67124  
Phone 620-672-1201

FIELD SERVICE TICKET  
1718 17148 A

TMA 57

DATE \_\_\_\_\_ TICKET NO. \_\_\_\_\_

DATE OF JOB <u>9-22-18</u> DISTRICT <u>Pratt-Kansas</u>		NEW WELL <input checked="" type="checkbox"/> OLD WELL <input type="checkbox"/> PROD <input type="checkbox"/> INJ <input type="checkbox"/> WDW <input type="checkbox"/> CUSTOMER ORDER NO.:							
CUSTOMER <u>LD Drilling Inc</u>		LEASE <u>NUSS</u> WELL NO. <u>2</u>							
ADDRESS		COUNTY <u>Logan</u> STATE <u>KS</u>							
CITY STATE		SERVICE CREW <u>Fernis, Mike, Jose, Jose</u>							
AUTHORIZED BY		JOB TYPE: <u>5 1/2 stage production 2-42</u>							
EQUIPMENT#	HRS	EQUIPMENT#	HRS	EQUIPMENT#	HRS	TRUCK CALLED	DATE	AM	TIME
<u>86279</u>	<u>9</u>						<u>9-21-18</u>	<u>PM</u>	<u>2000</u>
<u>194148</u>	<u>9</u>					ARRIVED AT JOB	<u>9-22-18</u>	<u>PM</u>	<u>0130</u>
<u>194862</u>	<u>9</u>					START OPERATION		<u>PM</u>	<u>0330</u>
						FINISH OPERATION		<u>PM</u>	<u>0930</u>
						RELEASED		<u>PM</u>	<u>1030</u>
						MILES FROM STATION TO WELL			<u>100</u>

CONTRACT CONDITIONS: (This contract must be signed before the job is commenced or merchandise is delivered).

The undersigned is authorized to execute this contract as an agent of the customer. As such, the undersigned agrees and acknowledges that this contract for services, materials, products, and/or supplies includes all of and only those terms and conditions appearing on the front and back of this document. No additional or substitute terms and/or conditions shall become a part of this contract without the written consent of an officer of Basic Energy Services LP.

SIGNED: [Signature]  
(WELL OWNER, OPERATOR, CONTRACTOR OR AGENT)

ITEM/PRICE REF. NO.	MATERIAL, EQUIPMENT AND SERVICES USED	UNIT	QUANTITY	UNIT PRICE	\$ AMOUNT
CP105	4A2 Cement	SK	150		2550 00
CP101	A-con Blend Common	SK	350		6300 00
CP103	60/40 Poz	SK	30		360 00
CC102	celloflake	lb	125		462 50
CC105	C-41P	lb	21		264 00
CC111	Salt	lb	901		450 50
CC113	CYP3um	lb	705		526 25
CC148	C-17	lb	92		1410 00
CC201	Gilsonite	lb	901		603 67
CC109	Caseum Chloride	lb	987		1036 35
CC200	Cement Gel	lb	52		13 00
CF1251	5 1/2 Auto Fill Flood shoe (Blue)	SA	1		360 00
CF481	5 1/2 Two stage cement collar	SA	1		4500 00
CF1901	5 1/2 Cement Basket	SA	2		580 00
CF1651	5 1/2 Turbolizer	SA	9		990 00
E100	Pickup mileage	Mi	100		450 00
E101	Heavy equipment mileage	Mi	200		1500 00
B113	Bulk delivery charge per ton mile	TNW	2460		6200 00
CB205	Depth charge 4001-5000'	4hr	1		2520 00
SUB TOTAL					32445 77

CHEMICAL / ACID DATA:			

SERVICE & EQUIPMENT	%TAX ON \$	
MATERIALS	%TAX ON \$	
TOTAL		19791 92

SERVICE REPRESENTATIVE <u>[Signature]</u>	THE ABOVE MATERIAL AND SERVICE ORDERED BY CUSTOMER AND RECEIVED BY: <u>[Signature]</u> (WELL OWNER OPERATOR CONTRACTOR OR AGENT)
---	---

FIELD SERVICE ORDER NO.



**BASIC**<sup>SM</sup>  
ENERGY SERVICES  
PRESSURE PUMPING & WIRELINE

10244 NE Hwy. 61  
P.O. Box 8613  
Pratt, Kansas 67124  
Phone 620-672-1201

**FIELD SERVICE TICKET**

1718 ~~17149~~ A  
Cont. no. 17146

DATE \_\_\_\_\_ TICKET NO. \_\_\_\_\_

DATE OF JOB <u>9-22-18</u> DISTRICT <u>Pratt/ICS</u>				NEW WELL <input checked="" type="checkbox"/> OLD WELL <input type="checkbox"/> PROD <input type="checkbox"/> INJ <input type="checkbox"/> WDW <input type="checkbox"/> CUSTOMER ORDER NO.:							
CUSTOMER <u>LD Drilling</u>				LEASE <u>NUSS</u>		WELL NO. <u>2</u>					
ADDRESS				COUNTY <u>Logan</u>		STATE <u>Kansas</u>					
CITY STATE				SERVICE CREW <u>Frenn, Mike, Jose, Jose</u>							
AUTHORIZED BY				JOB TYPE: <u>5 1/2" 2 stage production 2-42</u>							
EQUIPMENT#	HRS	EQUIPMENT#	HRS	EQUIPMENT#	HRS	TRUCK CALLED		DATE	AM	PM	TIME
						ARRIVED AT JOB			AM	PM	
						START OPERATION			AM	PM	
						FINISH OPERATION			AM	PM	
						RELEASED			AM	PM	
						MILES FROM STATION TO WELL					

CONTRACT CONDITIONS: (This contract must be signed before the job is commenced or merchandise is delivered).

The undersigned is authorized to execute this contract as an agent of the customer. As such, the undersigned agrees and acknowledges that this contract for services, materials, products, and/or supplies includes all of and only those terms and conditions appearing on the front and back of this document. No additional or substitute terms and/or conditions shall become a part of this contract without the written consent of an officer of Basic Energy Services LP.

SIGNED: [Signature]  
(WELL OWNER, OPERATOR, CONTRACTOR OR AGENT)

ITEM/PRICE REF. NO.	MATERIAL, EQUIPMENT AND SERVICES USED	UNIT	QUANTITY	UNIT PRICE	\$ AMOUNT	
LB240	Blending & Mixing Service Charge	SLC	530		742	00
5063	Service Supervision First 6 hrs on loc	SA	1		175	00

CHEMICAL / ACID DATA:			

SUB TOTAL 32445 77

SERVICE & EQUIPMENT	%TAX ON \$	
MATERIALS	%TAX ON \$	

TOTAL 19791 92

SERVICE REPRESENTATIVE [Signature] THE ABOVE MATERIAL AND SERVICE ORDERED BY CUSTOMER AND RECEIVED BY: [Signature]  
(WELL OWNER OPERATOR CONTRACTOR OR AGENT)

FIELD SERVICE ORDER NO. \_\_\_\_\_

CLOUD LITHO - Abilene, TX

Customer <i>LD Drilling Inc</i>	Lease No.	Date <i>9-22-16</i>
Lease <i>NU55</i>	Well # <i>2</i>	
Field Order # <i>17146</i>	Station <i>Pratt Kansas 17A</i>	Casing <i>5 1/2</i>
		Depth <i>4699.6</i>
Type Job <i>5 1/2" 2 stage Production string 2-42</i>	Formation	County <i>Logan</i>
		State <i>KS</i>
		Legal Description <i>35-135-32W</i>

PIPE DATA		PERFORATING DATA		FLUID USED	TREATMENT RESUME		
Casing Size <i>5 1/2</i>	Tubing Size	Shots/Ft		Acid	RATE	PRESS	ISIP
Depth <i>4699.6</i>	Depth	From	To	Pre Pad	Max		5 Min.
Volume <i>111.46</i>	Volume	From	To	Pad	Min		10 Min.
Max Press	Max Press	From	To	Frac	Avg		15 Min.
Well Connction <i>6" O</i>	Annulus Vol.	From	To		HHP Used		Annulus Pressure
Plug Depth	Packer Depth	From	To	Flush	Gas Volume		Total Load

Customer Representative				Station Manager				Treater			
Service Units	<i>76666</i>	<i>77666</i>	<i>66774</i>	<i>84981</i>	<i>19918</i>	<i>70759</i>	<i>19862</i>				
Driver Names	<i>Ferris</i>	<i>Mike</i>	<i>Mike</i>	<i>3062</i>	<i>3062</i>	<i>3062</i>	<i>3062</i>				

Time	Casing Pressure	Tubing Pressure	Bbls. Pumped	Rate	Service Log
<i>0130</i>					<i>Arrive on location / Safety meeting</i>
<i>0145</i>					<i>Rig up equipment</i>
<i>0540</i>					<i>Install Turbilitors 3+ 2, 4, 6, 8, 10, 12, 14, 16, 55 Install cement baskets 3+ 1, 55</i>
					<i>Install DU tool top 50' H = 244.3'</i>
<i>0551</i>	<i>500</i>				<i>Drop Ball, Blow float seat</i>
<i>0700</i>	<i>310</i>		<i>10</i>	<i>2.0 5</i>	<i>Pump H2O ahead</i>
<i>0710</i>	<i>200</i>			<i>4</i>	<i>Start mixing AA2 cement @ 14.6 pph</i>
<i>0715</i>	<i>100</i>		<i>20.5</i>	<i>4</i>	<i>75<sup>50</sup> AA2 cement away @ 14.6 pph</i>
<i>0720</i>					<i>150<sup>50</sup> AA2 cement away @ 14.6 pph S/D</i>
<i>0721</i>					<i>wash pumps + lines Drop ball down plug</i>
<i>0728</i>	<i>110</i>			<i>6</i>	<i>Start displacement - 53.3 Bbls H2O / 56.14 wpm</i>
<i>0738</i>	<i>300</i>		<i>71</i>	<i>6</i>	<i>Saw lift pressure @ 71 Bbls into displacement</i>
<i>0746</i>	<i>540</i>		<i>100</i>	<i>3.5</i>	<i>slow @ 150 bbls away</i>
<i>0749</i>	<i>1500</i>		<i>111.46</i>	<i>3.5</i>	<i>Land plug / check flows, flows held @ 25<sup>20</sup> back</i>
<i>0755</i>					<i>Drop dart</i>
<i>0815</i>	<i>1410</i>		<i>10</i>	<i>3.5</i>	<i>Pressure up, open DU tool B react. turbitor</i>
<i>0830</i>	<i>250</i>			<i>4</i>	<i>Start mixing A-con Blend @ 11.6 pph</i>
<i>0848</i>	<i>110</i>		<i>46</i>	<i>4</i>	<i>175<sup>50</sup> A-con Blend away @ 11.6 pph</i>
<i>0903</i>	<i>100</i>		<i>172</i>	<i>4</i>	<i>350<sup>50</sup> A-con Blend away @ 11.6 pph S/D</i>
<i>0905</i>					<i>wash pumps + lines, drop class plug</i>
<i>9:15</i>	<i>390</i>			<i>6</i>	<i>Start H2O displacement</i>

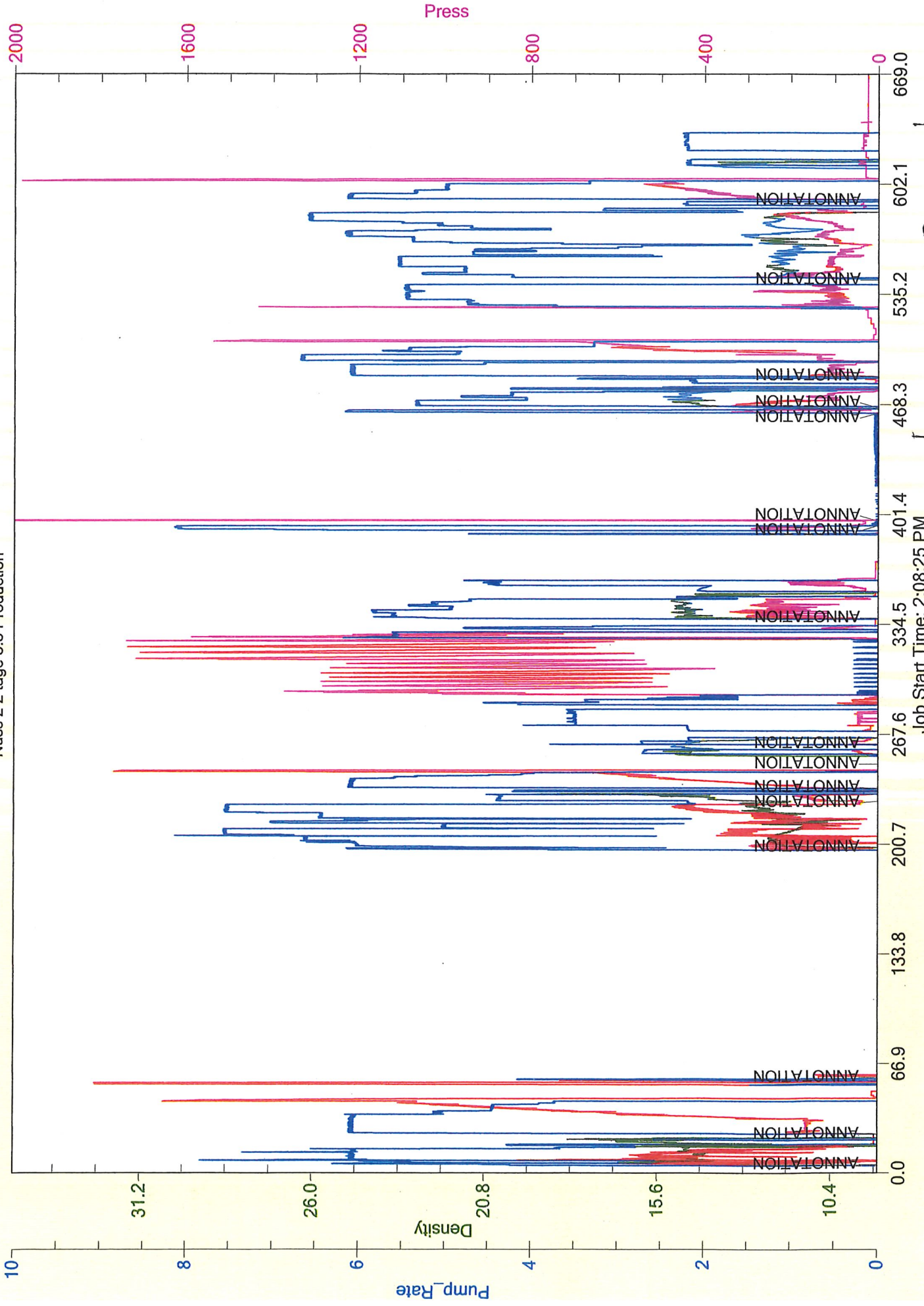
Customer <b>LD Drilling Inc</b>		Lease No.		Date <b>9-22-18</b>	
Lease <b>MUSS #2</b>		Well # <b>#2</b>			
Field Order # <b>17146</b>	Station <b>Pratt/Kansas</b>	Casing <b>5 1/2</b>	Depth <b>4169.6</b>	County <b>Logan</b>	State <b>KS</b>
Type Job <b>5 1/2" 2 stage production casing</b>			Formation	Legal Description <b>35-135-32W</b>	

PIPE DATA		PERFORATING DATA		FLUID USED	TREATMENT RESUME		
Casing Size	Tubing Size	Shots/Ft		Acid	RATE	PRESS	ISIP
Depth	Depth	From	To	Pre Pad	Max		5 Min.
Volume	Volume	From	To	Pad	Min		10 Min.
Max Press	Max Press	From	To	Frac	Avg		15 Min.
Well Connection	Annulus Vol.	From	To		HHP Used		Annulus Pressure
Plug Depth	Packer Depth	From	To	Flush	Gas Volume		Total Load

Customer Representative			Station Manager			Treater		
Service Units								
Driver Names								

Time	Casing Pressure	Tubing Pressure	Bbls. Pumped	Rate	Service Log
0925	470		50	3.5	Slow down to land plug
0928	1800		56.3	3.5	Land plug pressure up shut tool <sup>last time</sup> <sub>60ppd</sub>
0929					check flow, no flow
0935	20		7.5	2	Plug <del>set</del> Rot Hole 30 <sup>st</sup> 60/40 POC @ 13.6ppd
1000					Rig down
1030					Leave location
					1 <sup>st</sup> stage HOC - 1314.86' TOC - 3384.72
					2 <sup>nd</sup> stage HOC - 2443' TOC - SURFACE
					Saw cement @ surface at beginning of displacement = 58 Bbls cement to pit
					Thank you! Femisbordun

LD Drilling inc  
Nuss 2 2 tage 5.5 Production



LD Drilling Nuss 2 2 tage  
2.5 tage

Job Start Time: 2:08:25 PM