

KANSAS CORPORATION COMMISSION
OIL & GAS CONSERVATION DIVISION

TEMPORARY ABANDONMENT WELL APPLICATION

OPERATOR: License#
Name:
Address 1:
Address 2:
City: State: Zip:
Contact Person:
Phone:
Contact Person Email:
Field Contact Person:
Field Contact Person Phone:

API No. 15-
Spot Description:
Sec. Twp. S. R.
GPS Location: Lat, Long
Datum: NAD27, NAD83, WGS84
County: Elevation:
Lease Name: Well #:
Well Type: Oil, Gas, OG, WSW, Other
SWD Permit #: ENHR Permit #:
Gas Storage Permit #:
Spud Date: Date Shut-In:

Table with 7 columns: Conductor, Surface, Production, Intermediate, Liner, Tubing. Rows include Size, Setting Depth, Amount of Cement, Top of Cement, Bottom of Cement.

Casing Fluid Level from Surface: How Determined? Date:
Casing Squeeze(s): to w / sacks of cement, to w / sacks of cement. Date:
Do you have a valid Oil & Gas Lease? Yes No
Depth and Type: Junk in Hole at Tools in Hole at Casing Leaks: Yes No Depth of casing leak(s):
Type Completion: ALT. I ALT. II Depth of: DV Tool: w / sacks of cement Port Collar: w / sack of cement
Packer Type: Size: Inch Set at: Feet
Total Depth: Plug Back Depth: Plug Back Method:

Geological Date:

Table with 4 columns: Formation Name, Formation Top, Formation Base, Completion Information. Rows 1 and 2.

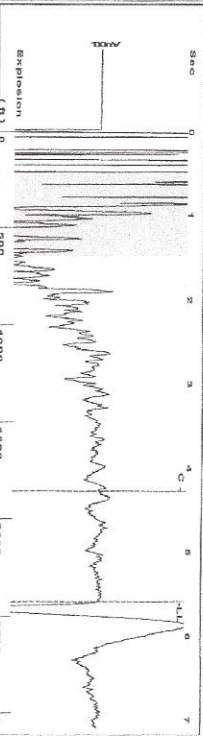
UNDER PENALTY OF PERJURY I HEREBY ATTEST THAT THE INFORMATION CONTAINED HEREIN IS TRUE AND CORRECT TO THE BEST OF MY KNOWLEDGE

Submitted Electronically

Form with fields: Do NOT Write in This Space - KCC USE ONLY, Date Tested, Results, Date Plugged, Date Repaired, Date Put Back in Service, Review Completed by, Comments, TA Approved: Yes Denied, Date.

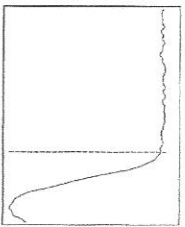
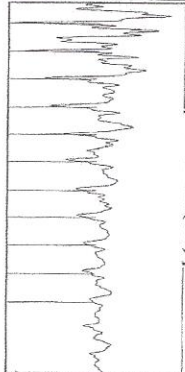
Mail to the Appropriate KCC Conservation Office:

Table with 2 columns: Office Address, Phone. Rows for KCC District Office #1, #2, #3, #4.



Filter Type High Pass
Manual Acoustic Velocity 397 ft/s
Automatic Collar Count Yes
Manual JTS/sec 13.2275

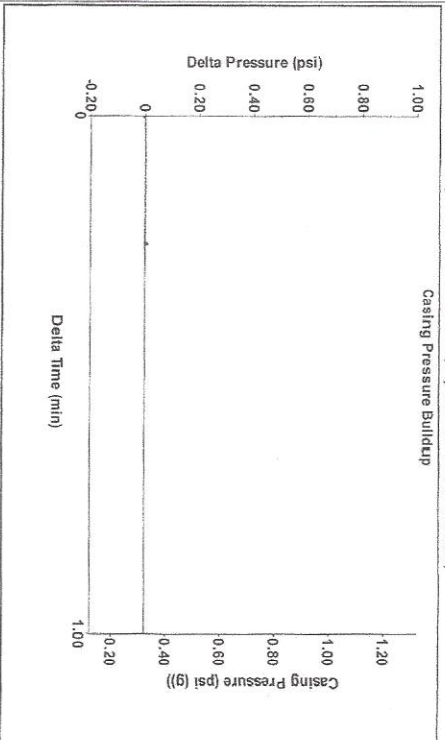
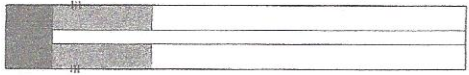
Time 5.587 sec
Joints 77.7515 Jts
Depth 2425.85 ft



Analysis Method: Automatic

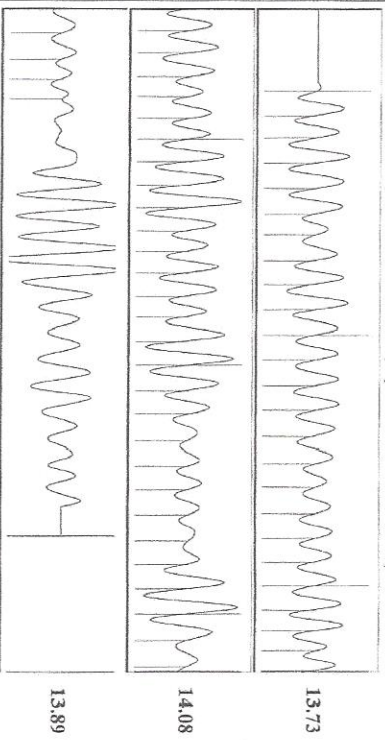
Group: GLM Well: Reiser #2 (acquired on: 11/19/18 16:16:38)

Production	Potential	Casing Pressure	Static
Current -*- BBL/D	-*- BBL/D	0.3 psi (g)	Static BHP 315.5 psi (g)
Water -*- BBL/D	-*- BBL/D	Casing Pressure Buildup 0.004 psi	Oil Column Height M/D 0 ft
Gas -*- Mes/D	-*- Mes/D	0.25 min	Water Column Height M/D 690 ft
IPR Method Vogel	Vogel	Gas/Liquid Interface Pressure 1.7 psi (g)	
PIBP/SBHP -*-	-*-		
Production Efficiency 0.0			
Oil 40 deg API		Liquid Level Depth 2425.85 ft	
Water 1.05 Sp.Gr.:H2O		Pump Intake Depth 3329.00 ft	
Gas 1.10 Sp.Gr.:AIR		Formation Depth 3116.00 ft	
Acoustic Velocity 868.39 ft/s			



Change in Pressure 0.00 psi
Change in Time 0.25 min
P-T6454
Range
0 - ? psi

Group: GLM Well: Reiser #2 (acquired on: 11/19/18 16:16:38)



Acoustic Velocity 868.39 ft/s	Joints counted 56
Joints Per Second 13.9165 Jts/sec	Joints to liquid level 77.7515
Depth to liquid level 2425.85 ft	Filter Width 11.2275
Automatic Collar Count Yes	Time to 1st Collar 0.248
	15.2275
	4.272

STATE OF KANSAS

CORPORATION COMMISSION
CONSERVATION DIVISION
DISTRICT OFFICE No. 4
2301 E. 13TH STREET
HAYS, KS 67601-2651



PHONE: 785-261-6250
FAX: 785-625-0564
<http://kcc.ks.gov/>

GOVERNOR JEFF COLYER, M.D.

SHARI FEIST ALBRECHT, CHAIR | JAY SCOTT EMLER, COMMISSIONER | DWIGHT D. KEEN, COMMISSIONER

January 08, 2019

Terry Morris
Morris, Terry E. dba G L M Company
PO BOX 193
RUSSELL, KS 67665-0193

Re: Temporary Abandonment
API 15-009-24779-00-00
REISER 2
NW/4 Sec.23-20S-11W
Barton County, Kansas

Dear Terry Morris:

"Your temporary abandonment (TA) application for the well listed above has been approved. In accordance with K.A.R. 82-3-111 the TA status of this well will expire 01/08/2020.

- * If you return this well to service or plug it, please notify the District Office.
- * If you sell this well you are required to file a Transfer of Operator form, T-1.
- * If the well will remain temporarily abandoned, you must submit a new TA application, CP-111, before 01/08/2020.

You may contact me at the number above if you have questions.

Very truly yours,

RICHARD WILLIAMS "