

KANSAS CORPORATION COMMISSION
OIL & GAS CONSERVATION DIVISION

TEMPORARY ABANDONMENT WELL APPLICATION

OPERATOR: License#
Name:
Address 1:
Address 2:
City: State: Zip:
Contact Person:
Phone:
Contact Person Email:
Field Contact Person:
Field Contact Person Phone:

API No. 15-
Spot Description:
Sec. Twp. S. R.
GPS Location: Lat: Long:
Datum: NAD27 NAD83 WGS84
County: Elevation:
Lease Name: Well #:
Well Type: Oil Gas OG WSW Other:
SWD Permit #: ENHR Permit #:
Gas Storage Permit #:
Spud Date: Date Shut-In:

Table with 7 columns: Conductor, Surface, Production, Intermediate, Liner, Tubing. Rows include Size, Setting Depth, Amount of Cement, Top of Cement, Bottom of Cement.

Casing Fluid Level from Surface: How Determined? Date:
Casing Squeeze(s): to w / sacks of cement, to w / sacks of cement. Date:
Do you have a valid Oil & Gas Lease? Yes No
Depth and Type: Junk in Hole at Tools in Hole at Casing Leaks: Yes No Depth of casing leak(s):
Type Completion: ALT. I ALT. II Depth of: DV Tool: w / sacks of cement Port Collar: w / sack of cement
Packer Type: Size: Inch Set at: Feet
Total Depth: Plug Back Depth: Plug Back Method:

Geological Data:

Table with 4 columns: Formation Name, Formation Top, Formation Base, Completion Information. Rows 1 and 2.

UNDER PENALTY OF PERJURY I HEREBY ATTEST THAT THE INFORMATION CONTAINED HEREIN IS TRUE AND CORRECT TO THE BEST OF MY KNOWLEDGE

Submitted Electronically

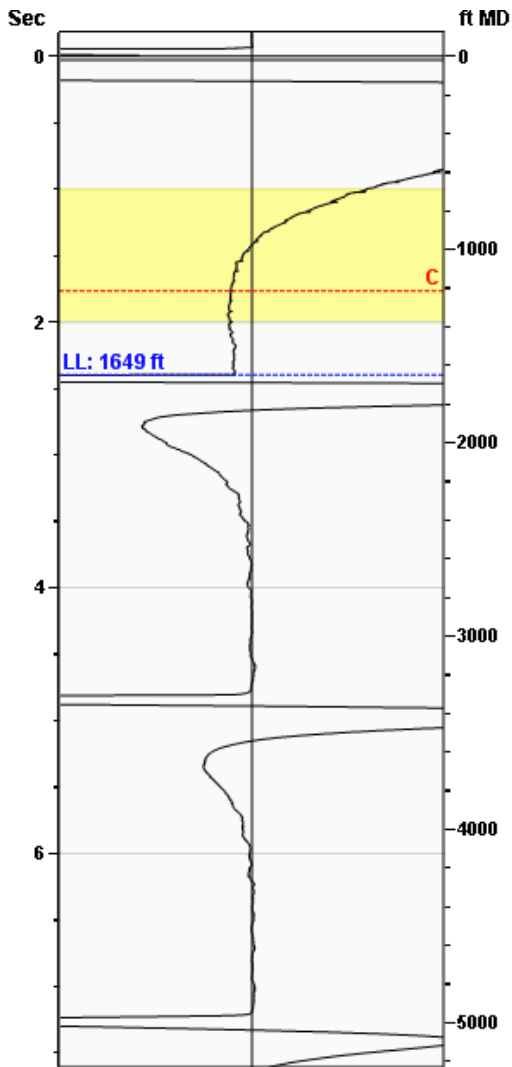
Do NOT Write in This Space - KCC USE ONLY
Date Tested: Results: Date Plugged: Date Repaired: Date Put Back in Service:
Review Completed by: Comments:
TA Approved: Yes Denied Date:

Mail to the Appropriate KCC Conservation Office:

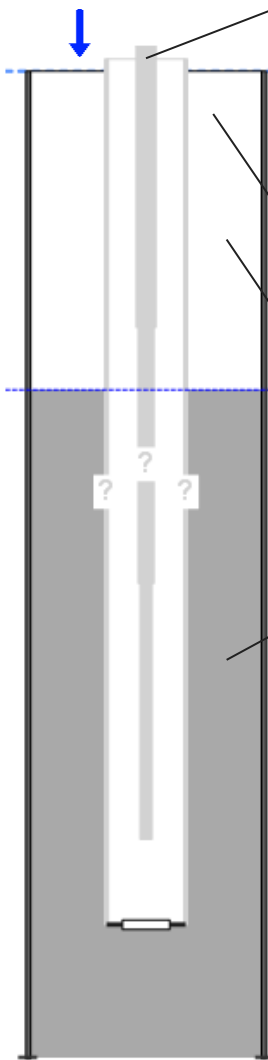
Map of Kansas with 4 numbered districts. Table with 3 columns: District Office Name, Address, Phone Number.

**Liquid Level** **1649 ft MD**

**Fluid Above Pump** **3461 ft TVD**  
**Equivalent Gas Free Above Pump** **3461 ft TVD**



Gun - WRFG753



<b>Production</b>			
Date Entered	01/24/19		
	Current	Potential	
Oil	**	**	BBL/D
Water	**	**	BBL/D
Gas	**	**	Mscf/D
IPR Method	Vogel		
PBHP/SBHP	-0.00		
Producing Efficiency	0.00%		

<b>Casing Pressure</b>	
Pressure	1.3 psi (g)

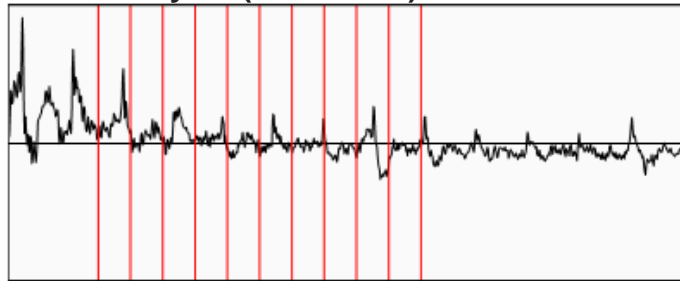
<b>Annular Gas Flow</b>	
Gas Flow	0.6 Mscf/D

<b>Fluid Properties</b>	
% Liquid Above Pump	100.00%
% Liquid Below Pump	**

<b>Depths</b>	
Pump Intake Depth	4416 ft
Formation Depth	5110 ft

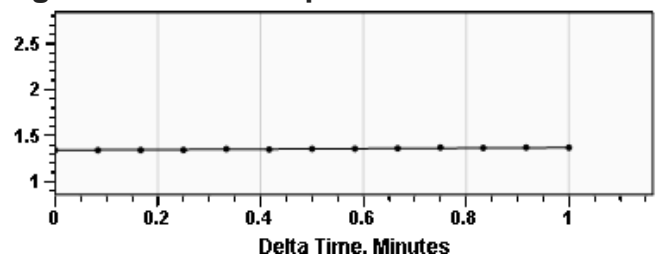
<b>Wellbore Pressures</b>	
PIP	909.2 psi (g)
PBHP	1136.8 psi (g)
SBHP	**
Gas/Liq Interface	1.9 psi (g)

**Collar Analysis (Automatic)**



Average Acoustic Velocity 1375 ft/s  
 Average Joints Per Sec. 21.69 Jts/sec  
 Joints To Liquid 52.01 Jts

**Casing Pressure Buildup**



Casing Pressure 1.3 psi (g)  
 Buildup 0.0 psi (g)  
 Buildup Time 1 min 0 sec  
 Gas Gravity from Collar Analysis (Automatic) 0.6234 Air = 1

**Comments and Recommendations**

Echometer Company  
 5001 Ditto Lane  
 Wichita Falls, TX 76302  
 (940) 767-4334  
 info@echometer.com

Conservation Division  
District Office No. 1  
210 E. Frontview, Suite A  
Dodge City, KS 67801



Phone: 620-682-7933  
<http://kcc.ks.gov/>

Dwight D. Keen, Chair  
Shari Feist Albrecht, Commissioner  
Jay Scott Emler, Commissioner

Laura Kelly, Governor

January 29, 2019

Katherine McClurkan  
Merit Energy Company, LLC  
13727 Noel Road, Suite 1200  
Dallas, TX 75240

Re: Temporary Abandonment  
API 15-055-22078-00-00  
Hicks D 1  
NW/4 Sec.09-25S-32W  
Finney County, Kansas

Dear Katherine McClurkan:

"Your temporary abandonment (TA) application for the well listed above has been approved. In accordance with K.A.R. 82-3-111 the TA status of this well will expire 01/29/2020.

- \* If you return this well to service or plug it, please notify the District Office.
- \* If you sell this well you are required to file a Transfer of Operator form, T-1.
- \* If the well will remain temporarily abandoned, you must submit a new TA application, CP-111, before 01/29/2020.

You may contact me at the number above if you have questions.

Very truly yours,

Michael Maier"