

KANSAS CORPORATION COMMISSION
OIL & GAS CONSERVATION DIVISION

Form must be Typed
Form must be signed

TEMPORARY ABANDONMENT WELL APPLICATION

All blanks must be complete

OPERATOR: License#
Name:
Address 1:
Address 2:
City: State: Zip:
Contact Person:
Phone:
Contact Person Email:
Field Contact Person:
Field Contact Person Phone:

API No. 15-
Spot Description:
Sec. Twp. S. R.
GPS Location: Lat: Long:
Datum: NAD27 NAD83 WGS84
County: Elevation:
Lease Name: Well #:
Well Type: Oil Gas OG WSW Other:
SWD Permit #: ENHR Permit #:
Gas Storage Permit #:
Spud Date: Date Shut-In:

Table with 7 columns: Conductor, Surface, Production, Intermediate, Liner, Tubing. Rows include Size, Setting Depth, Amount of Cement, Top of Cement, Bottom of Cement.

Casing Fluid Level from Surface: How Determined? Date:
Casing Squeeze(s): to w / sacks of cement, to w / sacks of cement. Date:
Do you have a valid Oil & Gas Lease? Yes No
Depth and Type: Junk in Hole at Tools in Hole at Casing Leaks: Yes No Depth of casing leak(s):
Type Completion: ALT. I ALT. II Depth of: DV Tool: w / sacks of cement Port Collar: w / sack of cement
Packer Type: Size: Inch Set at: Feet
Total Depth: Plug Back Depth: Plug Back Method:

Geological Date:

Table with 4 columns: Formation Name, Formation Top, Formation Base, Completion Information. Rows 1 and 2.

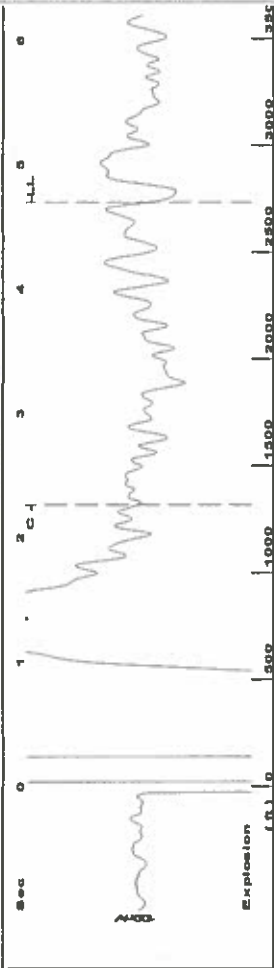
UNDER PENALTY OF PERJURY I HEREBY ATTEST THAT THE INFORMATION CONTAINED HEREIN IS TRUE AND CORRECT TO THE BEST OF MY KNOWLEDGE

Submitted Electronically

Do NOT Write in This Space - KCC USE ONLY
Date Tested: Results: Date Plugged: Date Repaired: Date Put Back in Service:
Review Completed by: Comments:
TA Approved: Yes Denied Date:

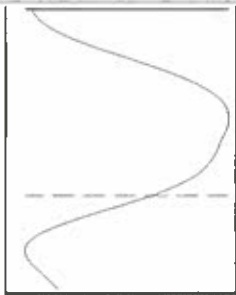
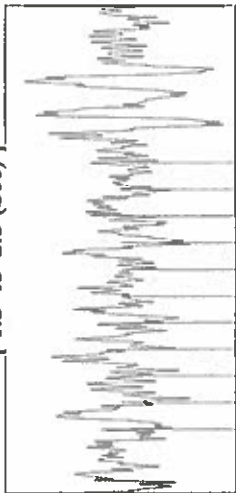
Mail to the Appropriate KCC Conservation Office:

Table with 3 columns: District Office, Address, Phone. Rows 1-4.



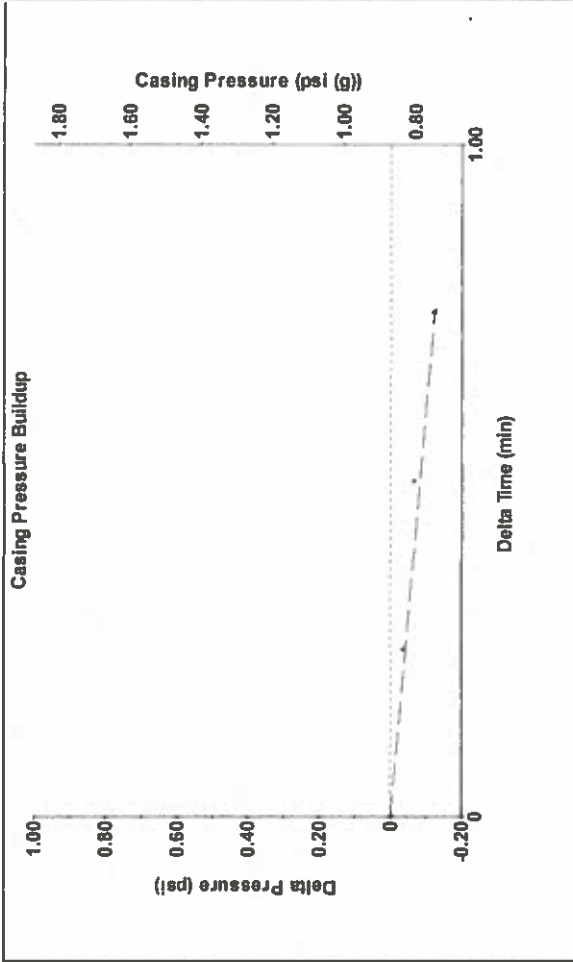
Filter Type High Pass Automatic Collar Count Yes Time 4.699 sec
 Manual Acoustic Velocity 1159.05 ft/s Manual JTS/sec 18.2815 Jts
 Depth 2735.11 ft

[1.5 to 2.5 (Sec)]

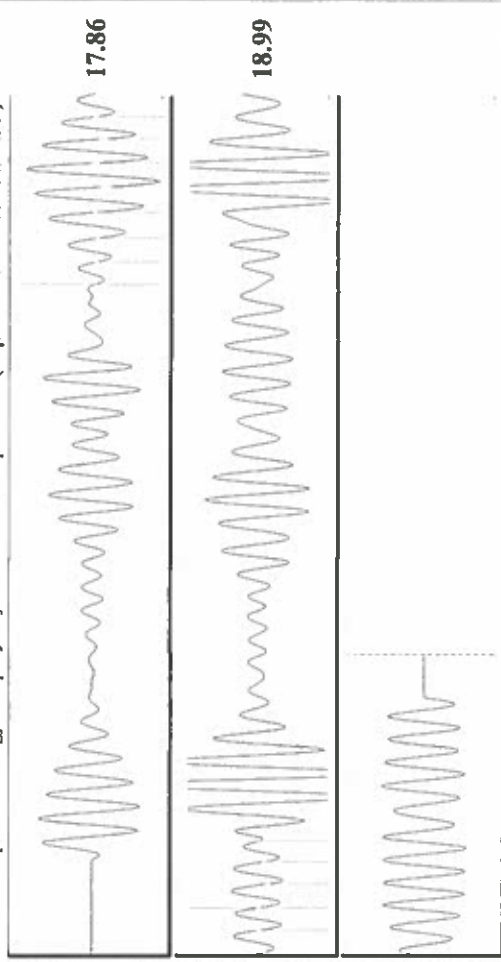


Analysis Method: Automatic

Production	Potential	0.9 psi (g)	Producing
Oil	BBL/D	-0.125 psi	Annular
Water	BBL/D	0.75 min	Gas Flow
Gas	Mscf/D	2.1 psi (g)	% Liquid
IPR Method	Vogel		100 %
PBHP/SBHP	0.0		
Production Efficiency			
Oil	40 deg.API		
Water	1.05 Sp.Gr.H2O		
Gas	0.83 Sp.Gr.AIR		
Acoustic Velocity	1164.12 ft/s		
Formation Submergence			
Total Gaseous Liquid Column HT (TVD)	238 ft		
Equivalent Gas Free Liquid HT (TVD)	238 ft		
Acoustic Test			
Tim Frydendall-Fluid Level Technician			



Change in Pressure -0.12 psi FT9522 Range
 Change in Time 0.75 min



Acoustic Velocity 1164.12 ft/s Joints counted 13
 Joints Per Second 18.3616 jts/sec Joints to liquid level 86.2811
 Depth to liquid level 2735.11 ft Filter Width 20.2815
 Automatic Collar Count Yes Time to 1st Collar 1.556 2.264

Conservation Division
District Office No. 1
210 E. Frontview, Suite A
Dodge City, KS 67801



Phone: 620-682-7933
<http://kcc.ks.gov/>

Dwight D. Keen, Chair
Shari Feist Albrecht, Commissioner
Jay Scott Emler, Commissioner

Laura Kelly, Governor

February 26, 2019

Katherine McClurkan
Merit Energy Company, LLC
13727 Noel Road, Suite 1200
Dallas, TX 75240

Re: Temporary Abandonment
API 15-067-20340-00-00
Hampton C 2
NE/4 Sec.01-29S-36W
Grant County, Kansas

Dear Katherine McClurkan:

"Your temporary abandonment (TA) application for the well listed above has been approved. In accordance with K.A.R. 82-3-111 the TA status of this well will expire 02/26/2020.

- * If you return this well to service or plug it, please notify the District Office.
- * If you sell this well you are required to file a Transfer of Operator form, T-1.
- * If the well will remain temporarily abandoned, you must submit a new TA application, CP-111, before 02/26/2020.

You may contact me at the number above if you have questions.

Very truly yours,

Michael Maier"