

KANSAS CORPORATION COMMISSION
OIL & GAS CONSERVATION DIVISION

TEMPORARY ABANDONMENT WELL APPLICATION

OPERATOR: License#
Name:
Address 1:
Address 2:
City: State: Zip:
Contact Person:
Phone:
Contact Person Email:
Field Contact Person:
Field Contact Person Phone:

API No. 15-
Spot Description:
Sec. Twp. S. R.
feet from N / S Line of Section
feet from E / W Line of Section
GPS Location: Lat: , Long:
Datum: NAD27 NAD83 WGS84
County: Elevation: GL KB
Lease Name: Well #:
Well Type: (check one) Oil Gas OG WSW Other:
SWD Permit #: ENHR Permit #:
Gas Storage Permit #:
Spud Date: Date Shut-In:

Table with 7 columns: Conductor, Surface, Production, Intermediate, Liner, Tubing. Rows include Size, Setting Depth, Amount of Cement, Top of Cement, Bottom of Cement.

Casing Fluid Level from Surface: How Determined? Date:
Casing Squeeze(s): to w / sacks of cement, to w / sacks of cement. Date:
Do you have a valid Oil & Gas Lease? Yes No
Depth and Type: Junk in Hole at Tools in Hole at Casing Leaks: Yes No Depth of casing leak(s):
Type Completion: ALT. I ALT. II Depth of: DV Tool: w / sacks of cement Port Collar: w / sack of cement
Packer Type: Size: Inch Set at: Feet
Total Depth: Plug Back Depth: Plug Back Method:

Geological Data:

Table with 4 columns: Formation Name, Formation Top, Formation Base, Completion Information. Rows 1 and 2.

UNDER PENALTY OF PERJURY I HEREBY ATTEST THAT THE INFORMATION CONTAINED HEREIN IS TRUE AND CORRECT TO THE BEST OF MY KNOWLEDGE

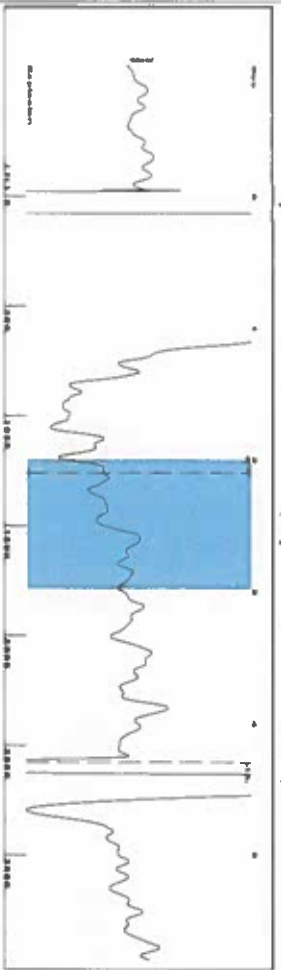
Submitted Electronically

Do NOT Write in This Space - KCC USE ONLY
Date Tested: Results: Date Plugged: Date Repaired: Date Put Back in Service:
Review Completed by: Comments:
TA Approved: Yes Denied Date:

Mail to the Appropriate KCC Conservation Office:

Table with 3 columns: District Office, Address, Phone. Rows for District Office #1, #2, #3, #4.

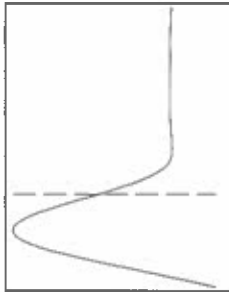
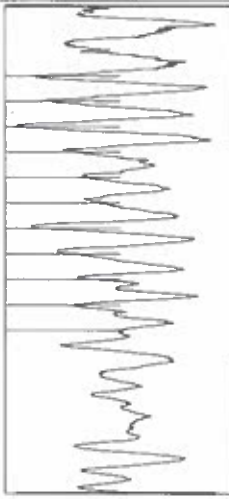
Group: SUBLETTE Well: Garrison A-1 (acquired on: 02/12/19 12:25:35)



Filter Type High Pass  
Manual Acoustic Velo 1179.35 ft/s  
Automatic Collar Count Yes  
Manual JTS/sec 19.1205

Time 4.297 sec  
Joints 83,527 Jts  
Depth 2575.97 ft

1.20 to 3.0 (Sec) |



Analysis Method: Automatic

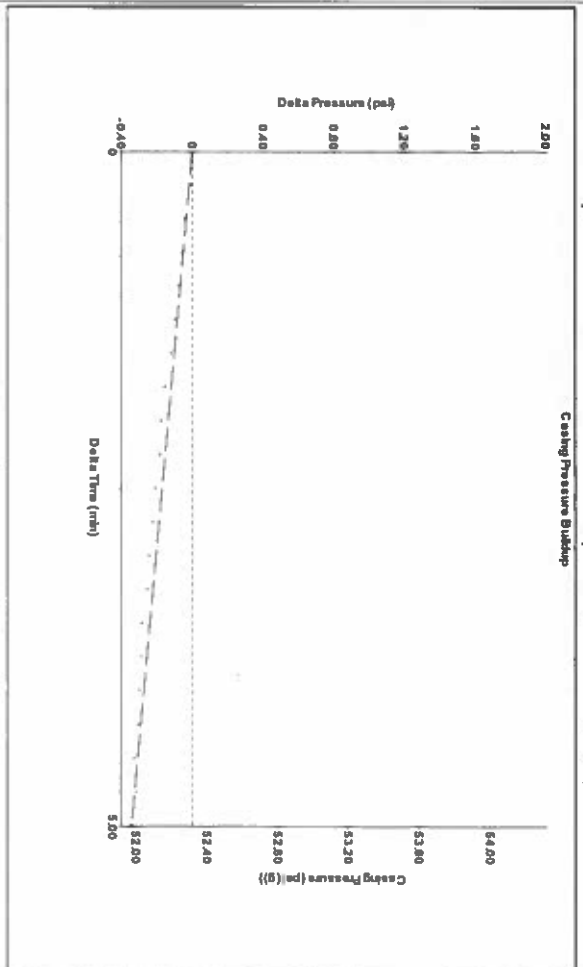
Group: SUBLETTE Well: Garrison A-1 (acquired on: 02/12/19 12:25:35)

Production Current	Potential	Casing Pressure	Producing
Oil ---	BBL/D ---	52.3 psi (g)	Annular Gas Flow 0 Mscf/D
Water ---	BBL/D ---	-0.3 psi	% Liquid 100 %
Gas ---	Mscf/D ---	5.00 min	
IPR Method PBHP/SBHP	Vogel ---	Gas/Liquid Interface Pressure 57.1 psi (g)	
Production Efficiency 0.0			
Oil 40 deg API		Liquid Level Depth 2575.97 ft	
Water 1.05 Sp.Gr.H2O		Pump Intake Depth 2672.00 ft	
Gas 0.79 Sp.Gr.AIR		Formation Depth 2810.00 ft	
Acoustic Velocity 1198.96 ft/s			
Formation Submergence			
Total Gaseous Liquid Column HIT (TVDD) 96 ft			
Equivalent Gas Free Liquid HIT (TVDD) 96 ft			
Acoustic Test			



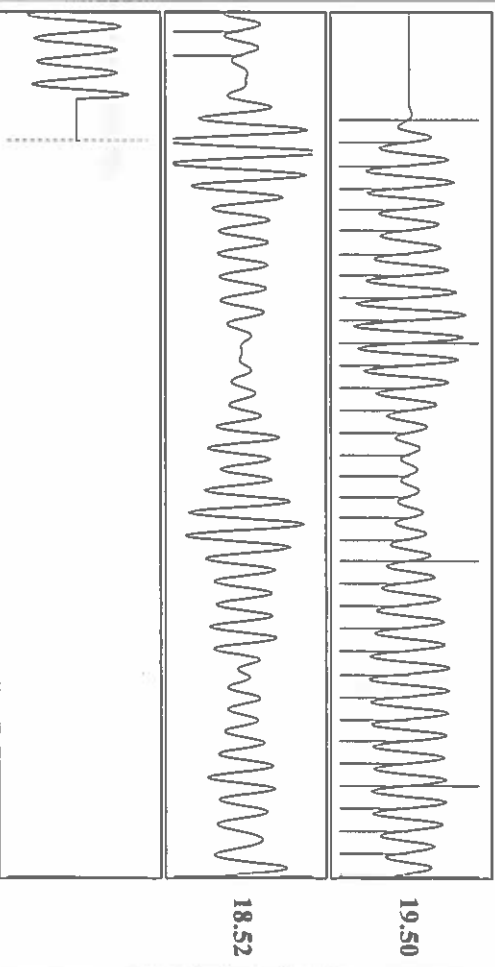
Pump Intake 89.7 psi (g)  
Producing BHP 152.4 psi (g)  
Static BHP --- psi (g)

Group: SUBLETTE Well: Garrison A-1 (acquired on: 02/12/19 12:25:35)



Change in Pressure -0.34 psi  
Change in Time 5.00 min  
PT114679 Range  
0 - ? psi

Group: SUBLETTE Well: Garrison A-1 (acquired on: 02/12/19 12:25:35)



Acoustic Velocity 1198.96 ft/s  
Joints Per Second 19.4384 Jts/sec  
Depth to liquid level 2575.97 ft  
Automatic Collar Count Yes

Joints counted 36  
Joints to liquid level 83,527  
Filter Width 17.1205  
Time to 1st Collar 0.248

Conservation Division  
District Office No. 1  
210 E. Frontview, Suite A  
Dodge City, KS 67801



Phone: 620-682-7933  
<http://kcc.ks.gov/>

Dwight D. Keen, Chair  
Shari Feist Albrecht, Commissioner  
Jay Scott Emler, Commissioner

Laura Kelly, Governor

February 12, 2019

Katherine McClurkan  
Merit Energy Company, LLC  
13727 Noel Road, Suite 1200  
Dallas, TX 75240

Re: Temporary Abandonment  
API 15-081-00296-00-00  
Garrison A 1  
NW/4 Sec.21-27S-34W  
Haskell County, Kansas

Dear Katherine McClurkan:

"Your temporary abandonment (TA) application for the well listed above has been approved. In accordance with K.A.R. 82-3-111 the TA status of this well will expire 02/12/2020.

- \* If you return this well to service or plug it, please notify the District Office.
- \* If you sell this well you are required to file a Transfer of Operator form, T-1.
- \* If the well will remain temporarily abandoned, you must submit a new TA application, CP-111, before 02/12/2020.

You may contact me at the number above if you have questions.

Very truly yours,

Michael Maier"