

KANSAS CORPORATION COMMISSION
OIL & GAS CONSERVATION DIVISION

Form must be Typed
Form must be signed

TEMPORARY ABANDONMENT WELL APPLICATION

All blanks must be complete

OPERATOR: License#
Name:
Address 1:
Address 2:
City: State: Zip:
Contact Person:
Phone:
Contact Person Email:
Field Contact Person:
Field Contact Person Phone:

API No. 15-
Spot Description:
Sec. Twp. S. R.
feet from N / S Line of Section
feet from E / W Line of Section
GPS Location: Lat: , Long:
Datum: NAD27 NAD83 WGS84
County: Elevation: GL KB
Lease Name: Well #:
Well Type: Oil Gas OG WSW Other:
SWD Permit #: ENHR Permit #:
Gas Storage Permit #:
Spud Date: Date Shut-In:

Table with 7 columns: Conductor, Surface, Production, Intermediate, Liner, Tubing. Rows include Size, Setting Depth, Amount of Cement, Top of Cement, Bottom of Cement.

Casing Fluid Level from Surface: How Determined? Date:
Casing Squeeze(s): to w / sacks of cement, to w / sacks of cement. Date:
Do you have a valid Oil & Gas Lease? Yes No
Depth and Type: Junk in Hole at Tools in Hole at Casing Leaks: Yes No Depth of casing leak(s):
Type Completion: ALT. I ALT. II Depth of: DV Tool: w / sacks of cement Port Collar: w / sack of cement
Packer Type: Size: Inch Set at: Feet
Total Depth: Plug Back Depth: Plug Back Method:

Geological Data:

Table with 4 columns: Formation Name, Formation Top, Formation Base, Completion Information. Rows 1 and 2.

UNDER PENALTY OF PERJURY I HEREBY ATTEST THAT THE INFORMATION CONTAINED HEREIN IS TRUE AND CORRECT TO THE BEST OF MY KNOWLEDGE

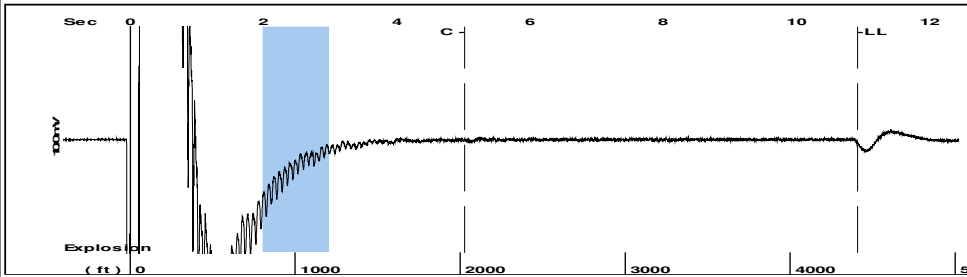
Submitted Electronically

Do NOT Write in This Space - KCC USE ONLY
Date Tested: Results: Date Plugged: Date Repaired: Date Put Back in Service:
Review Completed by: Comments:
TA Approved: Yes Denied Date:

Mail to the Appropriate KCC Conservation Office:

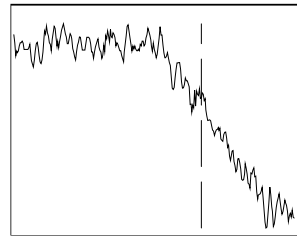
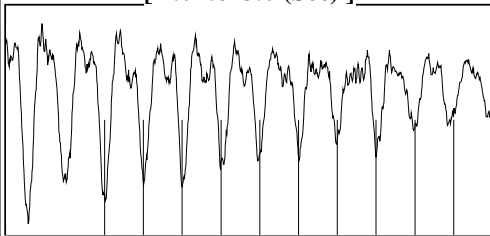
Table with 3 columns: District Office, Address, Phone. Rows for District Office #1, #2, #3, #4.

Group: MyWells Well: wassemiller 2-24 (acquired on: 01/10/19 17:04:17)



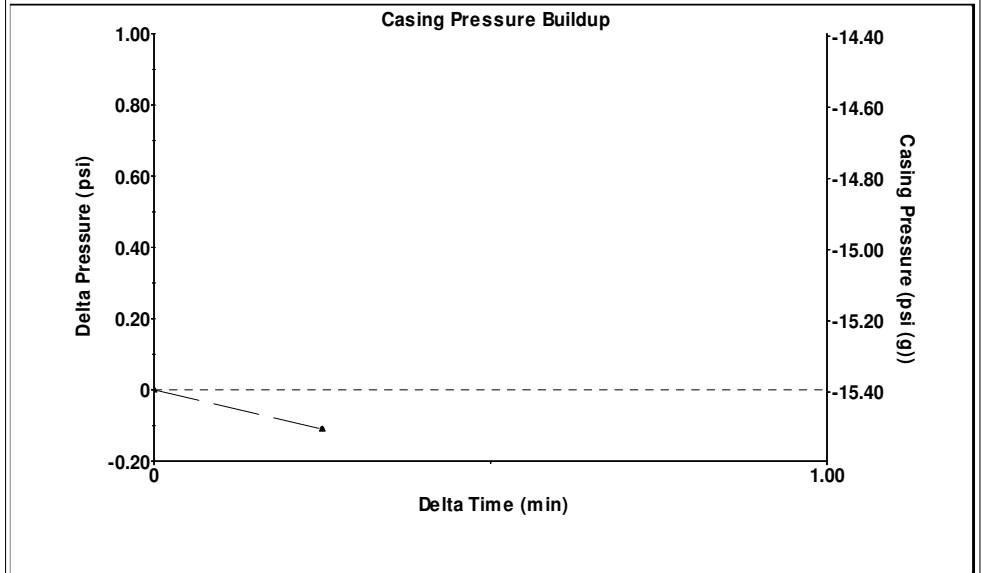
Filter Type High Pass Automatic Collar Count Yes Time 10.921 sec
 Manual Acoustic Veloc 795.483 ft/s Manual JTS/sec 12.5471 Joints 139.062 Jts
 Depth 4408.26 ft

[2.0 to 3.0 (Sec)]



Analysis Method: Automatic

Group: MyWells Well: wassemiller 2-24 (acquired on: 01/10/19 17:04:17)

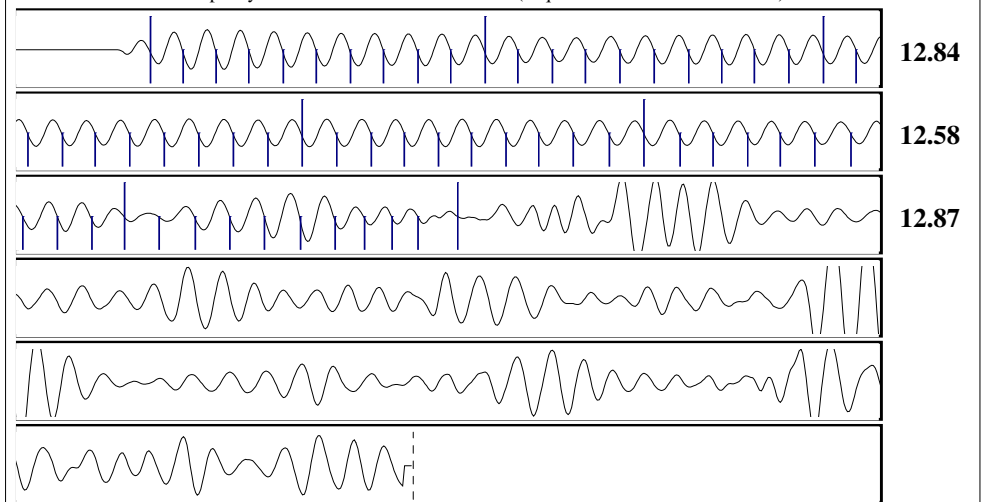


Change in Pressure -0.11 psi PT12363
 Change in Time 0.25 min Range 0 - ? psi

Group: MyWells Well: wassemiller 2-24 (acquired on: 01/10/19 17:04:17)

Production	Potential	Casing Pressure	Producing
Oil - *-	- *- BBL/D	-14.7 psi (g)	
Water - *-	- *- BBL/D	Casing Pressure Buildup	
Gas - *-	- *- Mscf/D	-0.1 psi	
		0.25 min	
IPR Method	Vogel	Gas/Liquid Interface Pressure	Annular Gas Flow
PBHP/SBHP - *-	- *-	- *- psi (g)	- *- Mscf/D
Production Efficiency 0.0			% Liquid 100 %
Oil 40 deg.API		Liquid Level Depth	
Water 1.05 Sp.Gr.H2O		4408.26 ft	
Gas 0.70 Sp.Gr.AIR		Pump Intake Depth	
		4260.00 ft	
Acoustic Velocity 807.301 ft/s		Formation Depth	
		4250.00 ft	
Formation Submergence			Pump Intake
Total Gaseous Liquid Column HT (TVD)	- *- ft		- *- psi (g)
Equivalent Gas Free Liquid HT (TVD)	- *- ft		Producing BHP
			- *- psi (g)
Acoustic Test			Static BHP
			- *- psi (g)

Group: MyWells Well: wassemiller 2-24 (acquired on: 01/10/19 17:04:17)



Acoustic Velocity 807.301 ft/s Joints counted 60
 Joints Per Second 12.7334 jts/sec Joints to liquid level 139.062
 Depth to liquid level 4408.26 ft Filter Width 10.5471 14.5471
 Automatic Collar Count Yes Time to 1st Collar 0.312 5.024

STATE OF KANSAS

CORPORATION COMMISSION
CONSERVATION DIVISION
DISTRICT OFFICE No. 4
2301 E. 13TH STREET
HAYS, KS 67601-2651



PHONE: 785-261-6250
FAX: 785-625-0564
<http://kcc.ks.gov/>

GOVERNOR JEFF COLYER, M.D.

SHARI FEIST ALBRECHT, CHAIR | JAY SCOTT EMLER, COMMISSIONER | DWIGHT D. KEEN, COMMISSIONER

January 11, 2019

David Van Dyke
Vess Oil Corporation
1700 WATERFRONT PKWY BLDG 500
WICHITA, KS 67206-6619

Re: Temporary Abandonment
API 15-109-20625-00-00
WASSEMILLER 2-24
NW/4 Sec.24-11S-34W
Logan County, Kansas

Dear David Van Dyke:

"Your temporary abandonment (TA) application for the well listed above has been approved. In accordance with K.A.R. 82-3-111 the TA status of this well will expire 01/11/2020.

- * If you return this well to service or plug it, please notify the District Office.
- * If you sell this well you are required to file a Transfer of Operator form, T-1.
- * If the well will remain temporarily abandoned, you must submit a new TA application, CP-111, before 01/11/2020.

You may contact me at the number above if you have questions.

Very truly yours,

RICHARD WILLIAMS "