

KANSAS CORPORATION COMMISSION
OIL & GAS CONSERVATION DIVISION

TEMPORARY ABANDONMENT WELL APPLICATION

OPERATOR: License# _____
 Name: _____
 Address 1: _____
 Address 2: _____
 City: _____ State: _____ Zip: _____ + _____
 Contact Person: _____
 Phone: (_____) _____
 Contact Person Email: _____
 Field Contact Person: _____
 Field Contact Person Phone: (_____) _____

API No. 15- _____
 Spot Description: _____
 _____ - _____ - _____ - _____ Sec. _____ Twp. _____ S. R. _____ E W
 _____ feet from N / S Line of Section
 _____ feet from E / W Line of Section
 GPS Location: Lat: _____, Long: _____
(e.g. xx.xxxxx) (e.g. -xxx.xxxxx)
 Datum: NAD27 NAD83 WGS84
 County: _____ Elevation: _____ GL KB
 Lease Name: _____ Well #: _____
 Well Type: (check one) Oil Gas OG WSW Other: _____
 SWD Permit #: _____ ENHR Permit #: _____
 Gas Storage Permit #: _____
 Spud Date: _____ Date Shut-In: _____

	Conductor	Surface	Production	Intermediate	Liner	Tubing
Size						
Setting Depth						
Amount of Cement						
Top of Cement						
Bottom of Cement						

Casing Fluid Level from Surface: _____ How Determined? _____ Date: _____
 Casing Squeeze(s): _____ to _____ w / _____ sacks of cement, _____ to _____ w / _____ sacks of cement. Date: _____
(top) (bottom) (top) (bottom)
 Do you have a valid Oil & Gas Lease? Yes No
 Depth and Type: Junk in Hole at _____ Tools in Hole at _____ Casing Leaks: Yes No Depth of casing leak(s): _____
(depth) (depth)
 Type Completion: ALT. I ALT. II Depth of: DV Tool: _____ w / _____ sacks of cement Port Collar: _____ w / _____ sack of cement
(depth) (depth)
 Packer Type: _____ Size: _____ Inch Set at: _____ Feet
 Total Depth: _____ Plug Back Depth: _____ Plug Back Method: _____

Geological Data:

Formation Name	Formation Top	Formation Base	Completion Information
1. _____	At: _____	to _____ Feet	Perforation Interval _____ to _____ Feet or Open Hole Interval _____ to _____ Feet
2. _____	At: _____	to _____ Feet	Perforation Interval _____ to _____ Feet or Open Hole Interval _____ to _____ Feet

UNDER PENALTY OF PERJURY I HEREBY ATTEST THAT THE INFORMATION CONTAINED HEREIN IS TRUE AND CORRECT TO THE BEST OF MY KNOWLEDGE

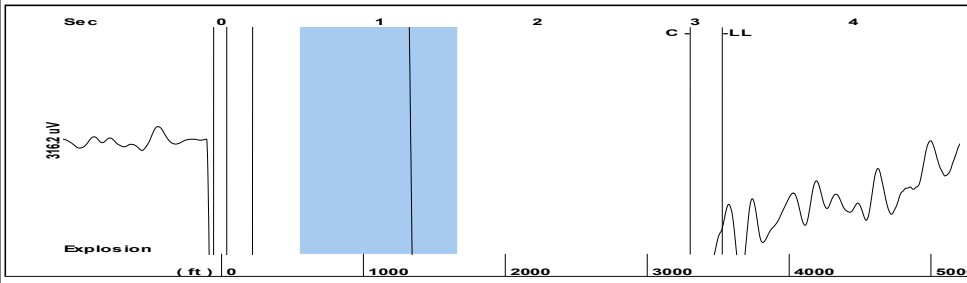
Submitted Electronically

Do NOT Write in This Space - KCC USE ONLY	Date Tested: _____	Results: _____	Date Plugged: _____	Date Repaired: _____	Date Put Back in Service: _____
	Review Completed by: _____ Comments: _____				
TA Approved: <input type="checkbox"/> Yes <input type="checkbox"/> Denied Date: _____					

Mail to the Appropriate KCC Conservation Office:

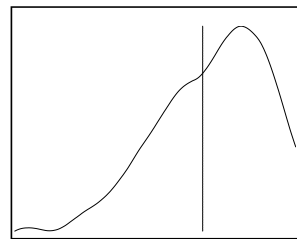
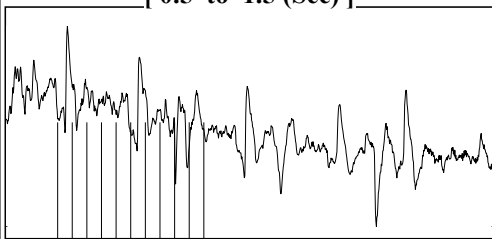
	KCC District Office #1 - 210 E. Frontview, Suite A, Dodge City, KS 67801	Phone 620.682.7933
	KCC District Office #2 - 3450 N. Rock Road, Building 600, Suite 601, Wichita, KS 67226	Phone 316.337.7400
	KCC District Office #3 - 137 E. 21st St., Chanute, KS 66720	Phone 620.902.6450
	KCC District Office #4 - 2301 E. 13th Street, Hays, KS 67601-2651	Phone 785.261.6250

Group: MyWells Well: Smith Barton #1 (acquired on: 01/07/19 12:11:10)



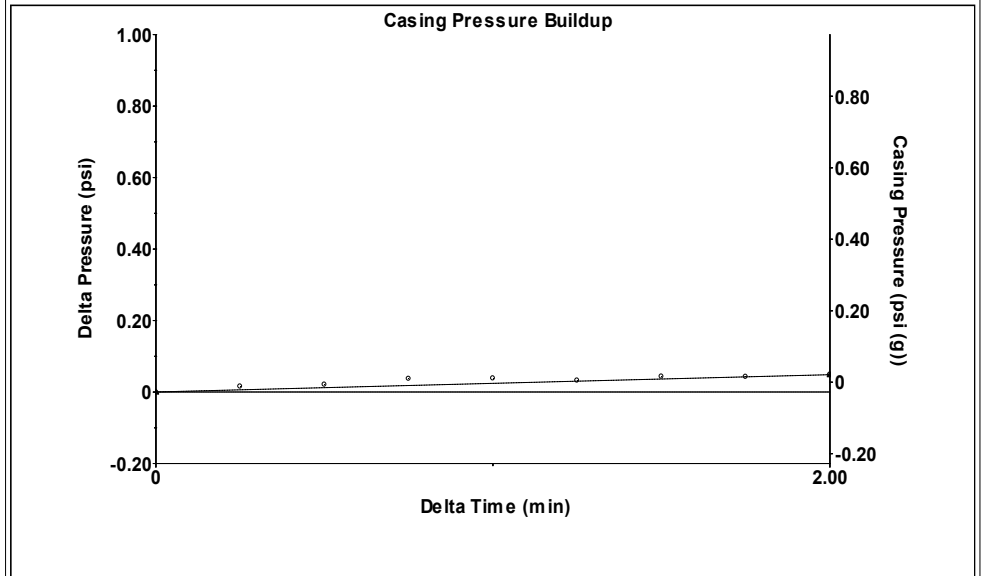
Filter Type High Pass Automatic Collar Count Yes Time 3.171 sec
 Manual Acoustic Velo 2113.33 ft/s Manual JTS/sec 33.3333 Joints 111.297 Jts
 Depth 3528.13 ft

[0.5 to 1.5 (Sec)]



Analysis Method: Automatic

Group: MyWells Well: Smith Barton #1 (acquired on: 01/07/19 12:11:10)

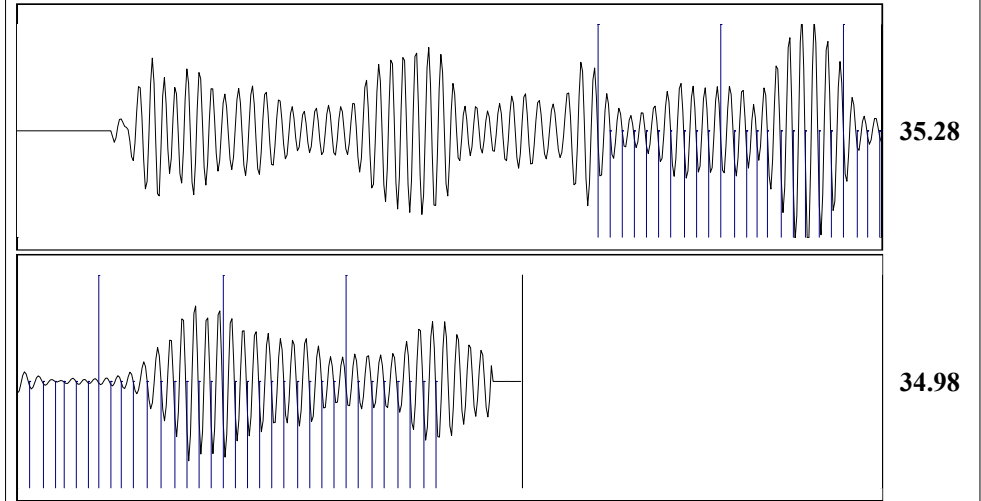


Change in Pressure 0.05 psi PT12865
 Change in Time 2.00 min Range 0 - ? psi

Group: MyWells Well: Smith Barton #1 (acquired on: 01/07/19 12:11:10)

Production				Producing
Current	Potential	Casing Pressure		
Oil - *-	- *- BBL/D	-0.0 psi (g)		Annular Gas Flow - *- Mscf/D
Water - *-	- *- BBL/D	Casing Pressure Buildup		% Liquid 98 %
Gas - *-	- *- Mscf/D	0.048 psi		
		2.00 min		
IPR Method	Vogel	Gas/Liquid Interface Pressure		
PBHP/SBHP	- *-	0.9 psi (g)		
Production Efficiency	0.0			
		Liquid Level Depth		
Oil 40 deg.API		3528.13 ft		
Water 1.05 Sp.Gr.H2O		Tubing Intake Depth		
Gas 0.55 Sp.Gr.AIR		- *- ft		
Acoustic Velocity 2225.25 ft/s		Formation Depth		
		3575.00 ft		
Formation Submergence				
Total Gaseous Liquid Column HT (TVD)		47 ft		
Equivalent Gas Free Liquid HT (TVD)		46 ft		
Acoustic Test				

Group: MyWells Well: Smith Barton #1 (acquired on: 01/07/19 12:11:10)



Acoustic Velocity 2225.25 ft/s Joints counted 57
 Joints Per Second 35.0985 jts/sec Joints to liquid level 111.297
 Depth to liquid level 3528.13 ft Filter Width 31.3333 35.3333
 Automatic Collar Count Yes Time to 1st Collar 1.344 2.968

Group: MyWells Well: Smith Barton #1 (acquired on: 01/07/19 12:11:10)

Production
 Current Potential
 Oil - * - - * - BBL/D
 Water - * - - * - BBL/D
 Gas - * - - * - Mscf/D

Based on SBHP psi (g)

IPR Method Vogel

Calculation for Continous Removal of Liquids
 Method:

Turner Critical Velocity for Gas Wells

For Tubing ID: 2.441 in

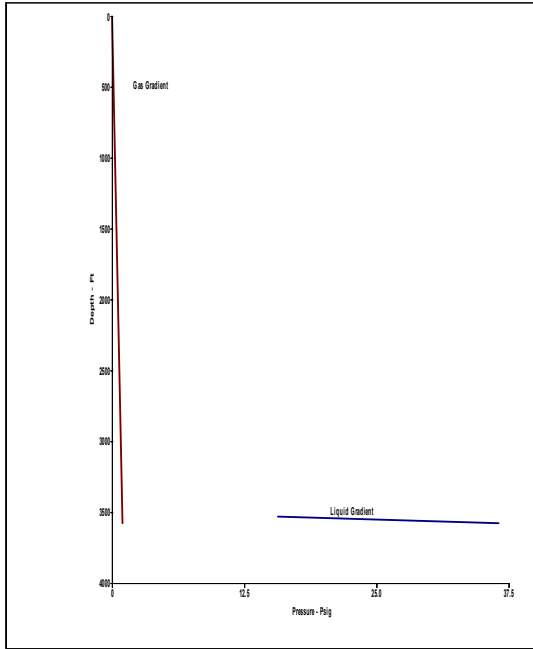
For Water: Mscf/D

For Condensate: Mscf/D

Back Pressure on Formation

Due To Liquid Loading: 35.5577 Mscf/D

Tubing ID in	Gas Rate Mscf/D	Predicted Status
2.441		
1.995		
1.500		
1.250		
1.000		



STATE OF KANSAS

CORPORATION COMMISSION
CONSERVATION DIVISION
DISTRICT OFFICE No. 4
2301 E. 13TH STREET
HAYS, KS 67601-2651



PHONE: 785-261-6250
FAX: 785-625-0564
<http://kcc.ks.gov/>

GOVERNOR JEFF COLYER, M.D.

SHARI FEIST ALBRECHT, CHAIR | JAY SCOTT EMLER, COMMISSIONER | DWIGHT D. KEEN, COMMISSIONER

January 14, 2019

Melody C. Fletcher
Oil Producers Inc. of Kansas
1710 WATERFRONT PKWY
WICHITA, KS 67206-6603

Re: Temporary Abandonment
API 15-009-23606-00-00
SMITH 1-B
SW/4 Sec.18-20S-14W
Barton County, Kansas

Dear Melody C. Fletcher:

"Your temporary abandonment (TA) application for the well listed above has been approved. In accordance with K.A.R. 82-3-111 the TA status of this well will expire 01/14/2020.

- * If you return this well to service or plug it, please notify the District Office.
- * If you sell this well you are required to file a Transfer of Operator form, T-1.
- * If the well will remain temporarily abandoned, you must submit a new TA application, CP-111, before 01/14/2020.

You may contact me at the number above if you have questions.

Very truly yours,

RICHARD WILLIAMS "