

KANSAS CORPORATION COMMISSION  
OIL & GAS CONSERVATION DIVISION

TEMPORARY ABANDONMENT WELL APPLICATION

OPERATOR: License# \_\_\_\_\_  
 Name: \_\_\_\_\_  
 Address 1: \_\_\_\_\_  
 Address 2: \_\_\_\_\_  
 City: \_\_\_\_\_ State: \_\_\_\_\_ Zip: \_\_\_\_\_ + \_\_\_\_\_  
 Contact Person: \_\_\_\_\_  
 Phone: ( \_\_\_\_\_ ) \_\_\_\_\_  
 Contact Person Email: \_\_\_\_\_  
 Field Contact Person: \_\_\_\_\_  
 Field Contact Person Phone: ( \_\_\_\_\_ ) \_\_\_\_\_

API No. 15- \_\_\_\_\_  
 Spot Description: \_\_\_\_\_  
 \_\_\_\_\_ - \_\_\_\_\_ - \_\_\_\_\_ - \_\_\_\_\_ Sec. \_\_\_\_\_ Twp. \_\_\_\_\_ S. R. \_\_\_\_\_  E  W  
 \_\_\_\_\_ feet from  N /  S Line of Section  
 \_\_\_\_\_ feet from  E /  W Line of Section  
 GPS Location: Lat: \_\_\_\_\_, Long: \_\_\_\_\_  
(e.g. xx.xxxxx) (e.g. -xxx.xxxxx)  
 Datum:  NAD27  NAD83  WGS84  
 County: \_\_\_\_\_ Elevation: \_\_\_\_\_  GL  KB  
 Lease Name: \_\_\_\_\_ Well #: \_\_\_\_\_  
 Well Type: (check one)  Oil  Gas  OG  WSW  Other: \_\_\_\_\_  
 SWD Permit #: \_\_\_\_\_  ENHR Permit #: \_\_\_\_\_  
 Gas Storage Permit #: \_\_\_\_\_  
 Spud Date: \_\_\_\_\_ Date Shut-In: \_\_\_\_\_

	Conductor	Surface	Production	Intermediate	Liner	Tubing
Size						
Setting Depth						
Amount of Cement						
Top of Cement						
Bottom of Cement						

Casing Fluid Level from Surface: \_\_\_\_\_ How Determined? \_\_\_\_\_ Date: \_\_\_\_\_  
 Casing Squeeze(s): \_\_\_\_\_ to \_\_\_\_\_ w / \_\_\_\_\_ sacks of cement, \_\_\_\_\_ to \_\_\_\_\_ w / \_\_\_\_\_ sacks of cement. Date: \_\_\_\_\_  
(top) (bottom) (top) (bottom)  
 Do you have a valid Oil & Gas Lease?  Yes  No  
 Depth and Type:  Junk in Hole at \_\_\_\_\_  Tools in Hole at \_\_\_\_\_ Casing Leaks:  Yes  No Depth of casing leak(s): \_\_\_\_\_  
(depth) (depth)  
 Type Completion:  ALT. I  ALT. II Depth of:  DV Tool: \_\_\_\_\_ w / \_\_\_\_\_ sacks of cement  Port Collar: \_\_\_\_\_ w / \_\_\_\_\_ sack of cement  
(depth) (depth)  
 Packer Type: \_\_\_\_\_ Size: \_\_\_\_\_ Inch Set at: \_\_\_\_\_ Feet  
 Total Depth: \_\_\_\_\_ Plug Back Depth: \_\_\_\_\_ Plug Back Method: \_\_\_\_\_

**Geological Data:**

Formation Name	Formation Top	Formation Base	Completion Information
1. _____	At: _____	to _____ Feet	Perforation Interval _____ to _____ Feet or Open Hole Interval _____ to _____ Feet
2. _____	At: _____	to _____ Feet	Perforation Interval _____ to _____ Feet or Open Hole Interval _____ to _____ Feet

UNDER PENALTY OF PERJURY I HEREBY ATTEST THAT THE INFORMATION CONTAINED HEREIN IS TRUE AND CORRECT TO THE BEST OF MY KNOWLEDGE

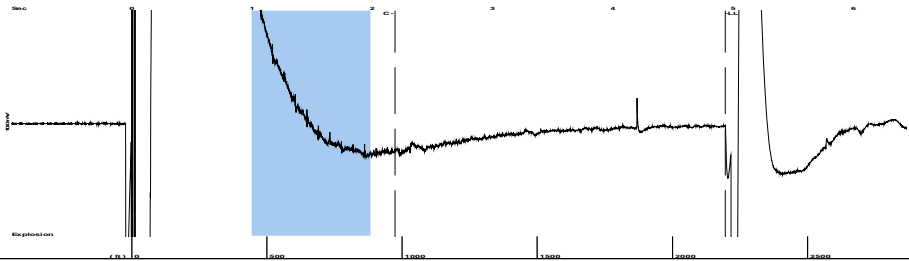
Submitted Electronically

<b>Do NOT Write in This Space - KCC USE ONLY</b>	Date Tested: _____	Results: _____	Date Plugged: _____	Date Repaired: _____	Date Put Back in Service: _____
	Review Completed by: _____ Comments: _____				
TA Approved: <input type="checkbox"/> Yes <input type="checkbox"/> Denied Date: _____					

Mail to the Appropriate KCC Conservation Office:

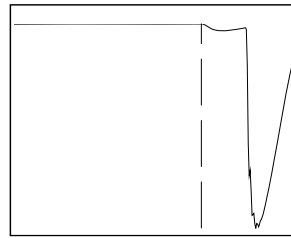
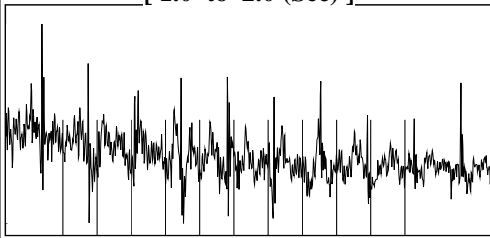
	KCC District Office #1 - 210 E. Frontview, Suite A, Dodge City, KS 67801	Phone 620.682.7933
	KCC District Office #2 - 3450 N. Rock Road, Building 600, Suite 601, Wichita, KS 67226	Phone 316.337.7400
	KCC District Office #3 - 137 E. 21st St., Chanute, KS 66720	Phone 620.902.6450
	KCC District Office #4 - 2301 E. 13th Street, Hays, KS 67601-2651	Phone 785.261.6250

Group: MyWells Well: SPALSBURY 3-2#1 (acquired on: 01/21/19 10:42:56)



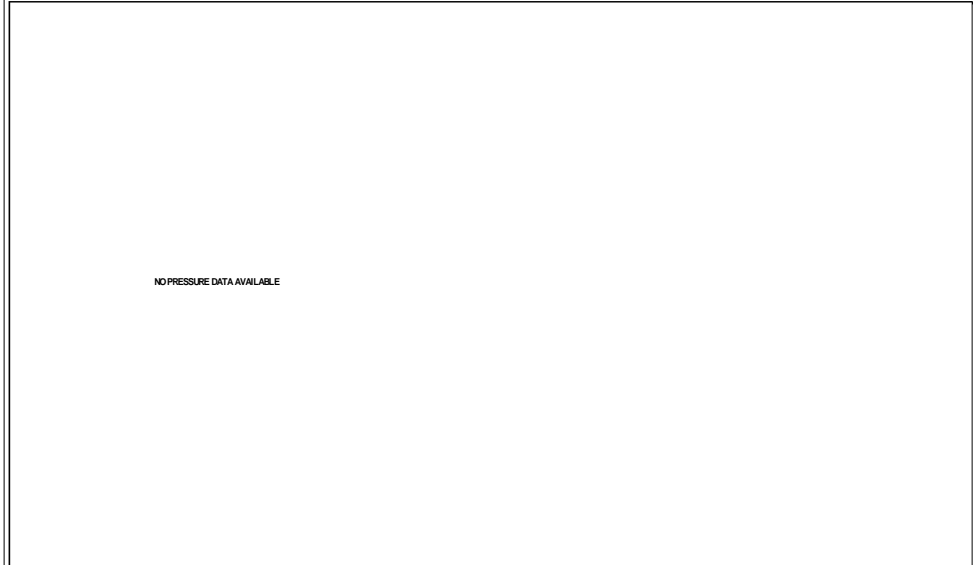
Filter Type High Pass Automatic Collar Count Yes Time 4.933 sec  
 Manual Acoustic Velo 901.849 ft/s Manual JTS/sec 14.2248 Joints 69.2538 Jts  
 Depth 2195.34 ft

[ 1.0 to 2.0 (Sec) ]



Analysis Method: Automatic

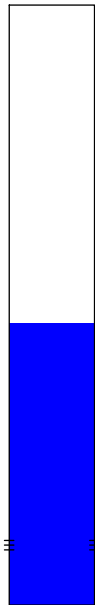
Group: MyWells Well: SPALSBURY 3-2#1 (acquired on: 01/21/19 10:42:56)



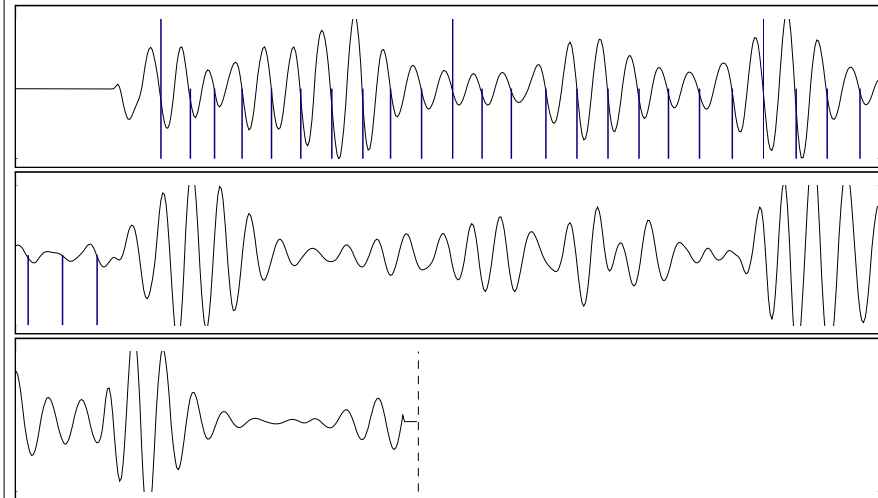
Change in Pressure 0.00 psi PT16027  
 Range 0 - ? psi  
 Change in Time 0.00 min

Group: MyWells Well: SPALSBURY 3-2#1 (acquired on: 01/21/19 10:42:56)

Production		Potential	Casing Pressure	Static
Current				
Oil - * -	- * -	BBL/D	-1.1 psi (g)	Oil Column Height
Water - * -	- * -	BBL/D	Casing Pressure Buildup	MD 0 ft
Gas - * -	- * -	Mscf/D	- * - psi	
			- * - min	
IPR Method	Vogel	Gas/Liquid Interface Pressure	- * - psi (g)	Water Column Height
PBHP/SBHP	- * -			MD - * - ft
Production Efficiency	0.0	Liquid Level Depth		
		2195.34 ft	Pump Intake Depth	
Oil 40 deg.API			- * - ft	
Water 1.05 Sp.Gr.H2O		Formation Depth		
Gas 1.08 Sp.Gr.AIR		4085.00 ft	Static BHP	
Acoustic Velocity	890.065 ft/s		- * - psi (g)	



Group: MyWells Well: SPALSBURY 3-2#1 (acquired on: 01/21/19 10:42:56)



14.20  
12.93

Acoustic Velocity	890.065 ft/s	Joints counted	26
Joints Per Second	14.0389 jts/sec	Joints to liquid level	69.2538
Depth to liquid level	2195.34 ft	Filter Width	12.2248 16.2248
Automatic Collar Count	Yes	Time to 1st Collar	0.336 2.188

Conservation Division  
District Office No. 4  
2301 E. 13th Street  
Hays, KS 67601-2651



Phone: 785-261-6250  
Fax: 785-625-0564  
<http://kcc.ks.gov/>

Dwight D. Keen, Chair  
Shari Feist Albrecht, Commissioner  
Jay Scott Emler, Commissioner

Laura Kelly, Governor

January 22, 2019

Jose Reyes  
American Warrior, Inc.  
PO BOX 399  
GARDEN CITY, KS 67846-0399

Re: Temporary Abandonment  
API 15-195-22982-00-00  
SPALSBURY 3-2 #1  
NE/4 Sec.03-12S-21W  
Trego County, Kansas

Dear Jose Reyes:

"Your temporary abandonment (TA) application for the well listed above has been approved. In accordance with K.A.R. 82-3-111 the TA status of this well will expire 01/22/2020.

- \* If you return this well to service or plug it, please notify the District Office.
- \* If you sell this well you are required to file a Transfer of Operator form, T-1.
- \* If the well will remain temporarily abandoned, you must submit a new TA application, CP-111, before 01/22/2020.

You may contact me at the number above if you have questions.

Very truly yours,

RICHARD WILLIAMS "